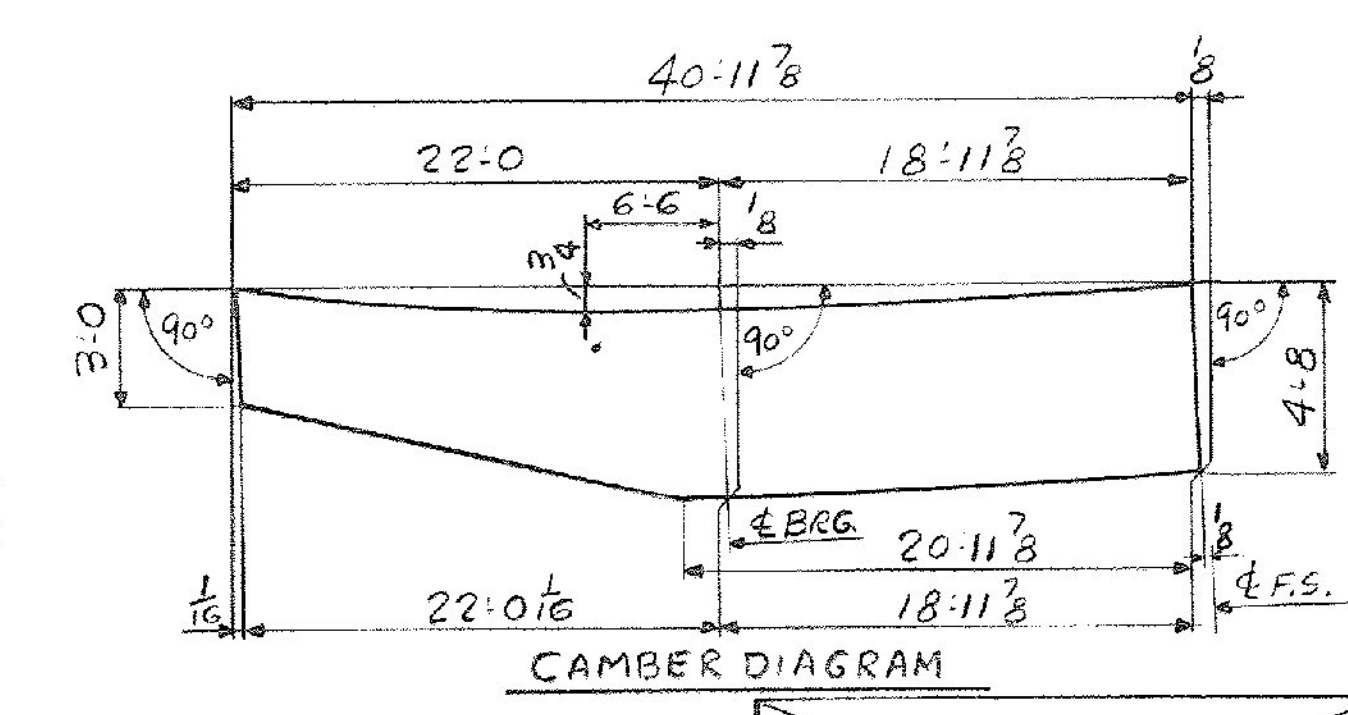
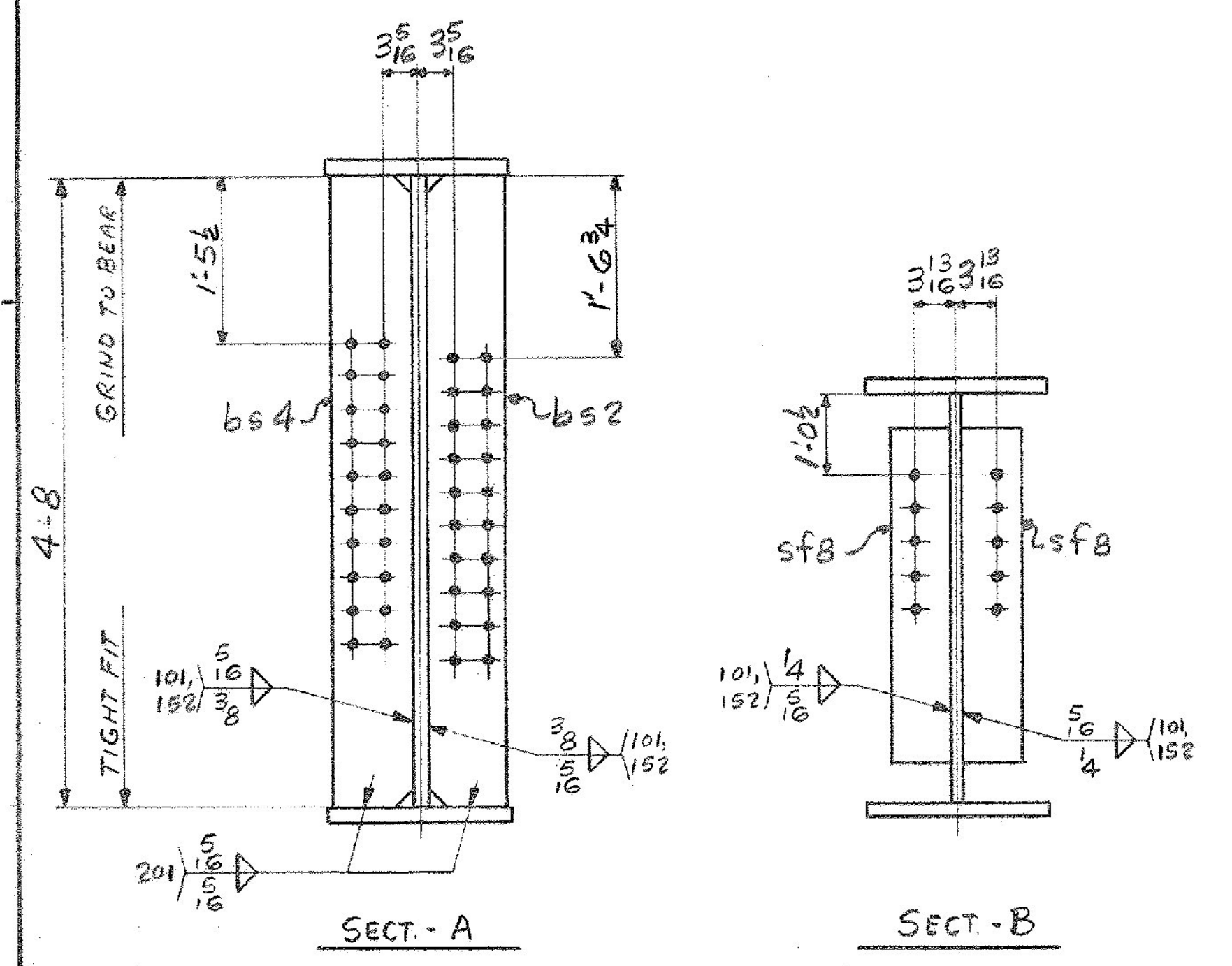
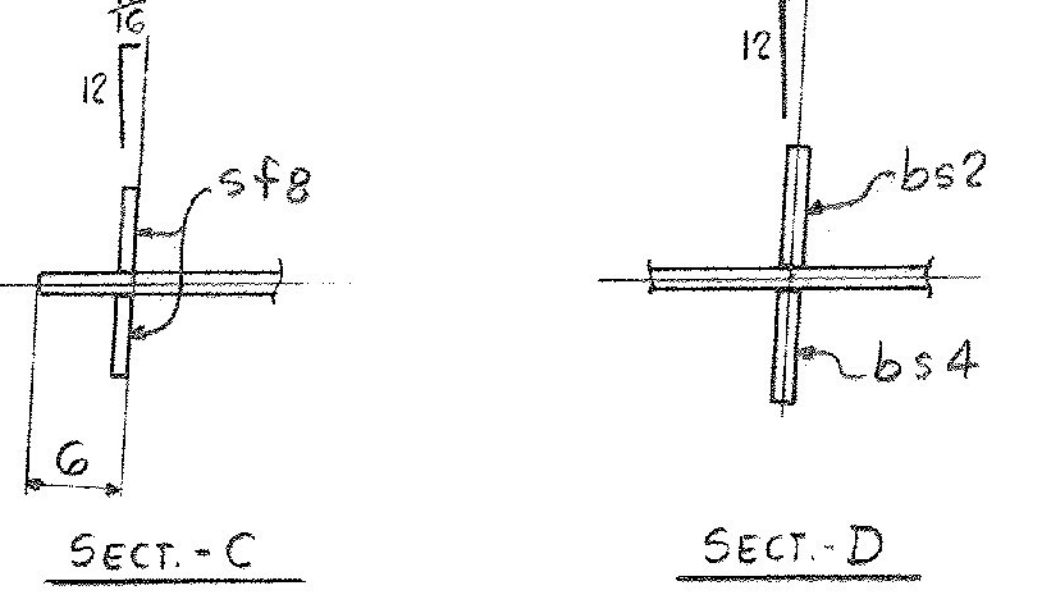


**ONE GIRDER - G8A**

FOR GIRDER STANDARD DETAILS SEE DWG. 52-2  
 FOR WEB CUTTING SK. & FLG. PLASSY SEE DWG. 52-1  
 FOR SHOP ASSEMBLY DIAGRAM SEE DWG. 52-1



ALL CONNECTIONS DETAILED ON THIS DRAWING REPRESENT BANCROFT & MARTIN INC. STANDARDS. IN APPROVING THIS DRAWING FOR FABRICATION, THE ARCHITECT AND/OR ENGINEER ASSUMES THE RESPONSIBILITY FOR THE STRUCTURAL INTEGRITY OF ALL CONNECTIONS SHOWN.

SHIP		BILL OF MATERIAL			JOB NO.	DRAWING NO.	REV.	
G8A		GIRDER			4-8	52-4	△	
MARK	NO.	MARK	SHAPE	LENGTH	WT.	ITEM NO.	WT.	REMARKS
1	wpl		PL 7/8 x 56 3/4	41 0	10.57/4	1/A	402	CVN
1	tf1		PL 1/8 x 16	40 11 3/8	1.7/2	1/D	2511	CVN
1	bf1		PL 3/8 x 16	20 0 1/8	20.3	1/H	956	
1	bf2		PL 1/8 x 16	20 11 3/8	1.7/2	1/E	1286	
2	sp1		PL 1/2 x 5 1/2	2 2	2.0	1/Q	380	CVN
1	sp2		PL 1/2 x 16	2 5	10.1/2	1/R	60	CVN
2	sp3		PL 5/8 x 7	2 5	10.4/16	1/T	72	CVN
1	sp4		PL 1/4 x 16	1 2 3/8	1.7/8	1/P	16	
1	sp5		PL 3/8 x 16	2 11	17.2/4	1/S	99	CVN
2	sp6		PL 1/6 x 7	2 11	10.4/16	1/U	96	CVN
1	bs2		BAR 7/8 x 1 3/8	4 8	10.6/16	1/O	97	MIE FILE
1	bs4		BAR 7/8 x 1 3/8	4 8	10.6/16	1/O	97	MIE FILE
2	sf8		BAR 5 x 3/8	2 6	10.4/16	1/M	53	ALSO CUTS 1/4 x 1/4

IT. NO. 506.91 BR. NO. PROJ. NO. F020-1(10)

**FOR APPROVAL FOR FILES & FIELD**

STEEL: ASTM.  A36  A572 GR.  A588 GR.  Unless Noted

WELDING ELECTRODE  E70  See Welding Proc.  None

SHOP CONN:  Bolted  Welded  None

FIELD CONN:  Bolted  Welded  None

HOLES:  13-16  15-16  Unless Noted  None

PAINT:  None  Shopcoat  Galv. After Fab  As Noted

SPECIAL PAINT:  Blast Clean  None  SSPC-SP6

**GIRDER G8A**

APPROVED: 5-8-84  
 PRINT DIST  
 7 2-26-84 APP.  
 8 5-10-84 FAB.  
 7 4-6-84 APP.

**Bancroft & Martin Inc.**  
 South Portland, Maine 04106

JOB: U.S.4 OVER TWO-WAY RAMP  
 WEST RUTLAND, RUTLAND, VERMONT

CUSTOMER: M&J CONSTRUCTION CO.  
 DESIGNER: STATE OF VERMONT, AGENCY OF TRANSP.

REV. △  
 CHECKED 3-20-84 RH  
 DRAWN 2-27-84 ELC

ORDER NO. 4-8 DRAWING NO. 52-4 REV. △

TENSOR 920-08