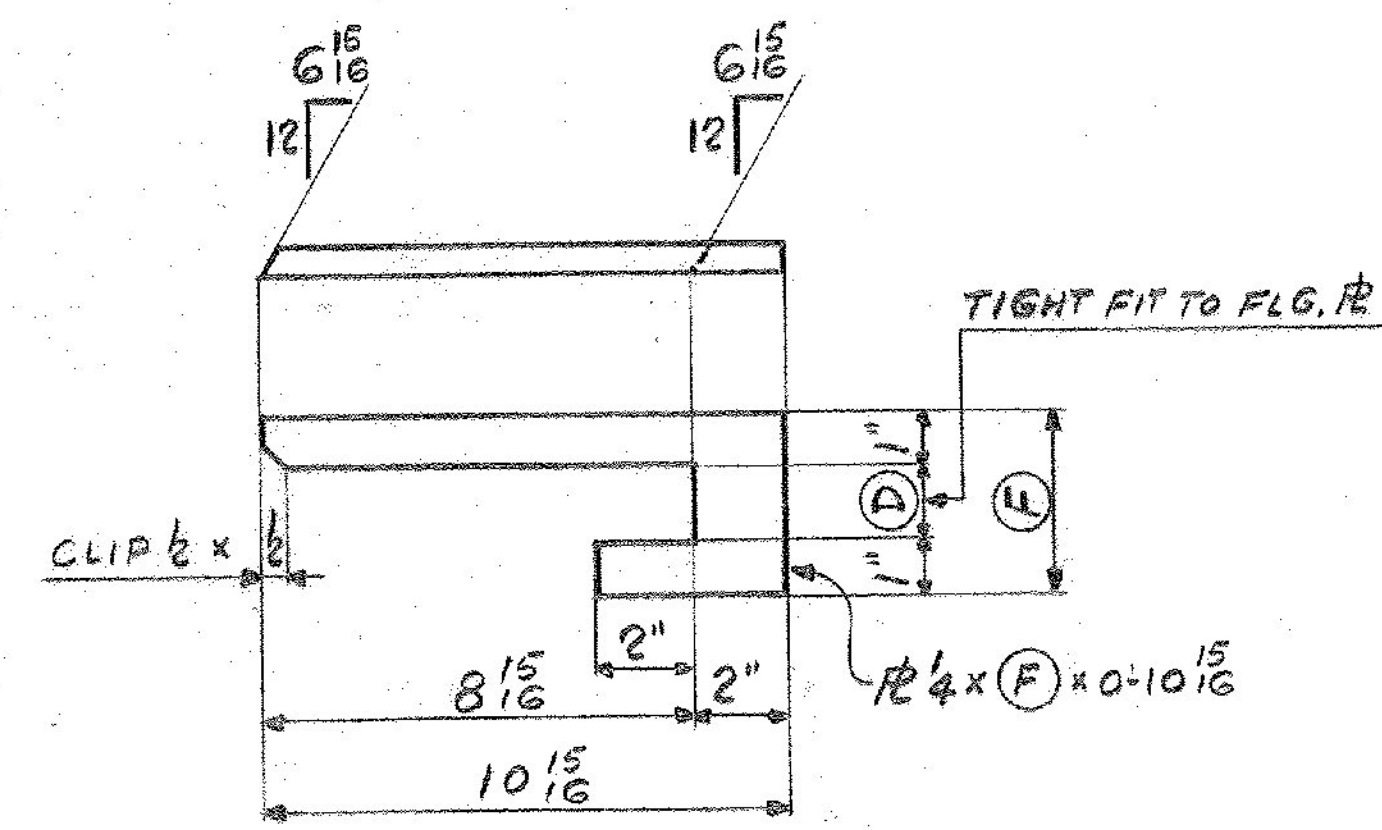


4- bs1

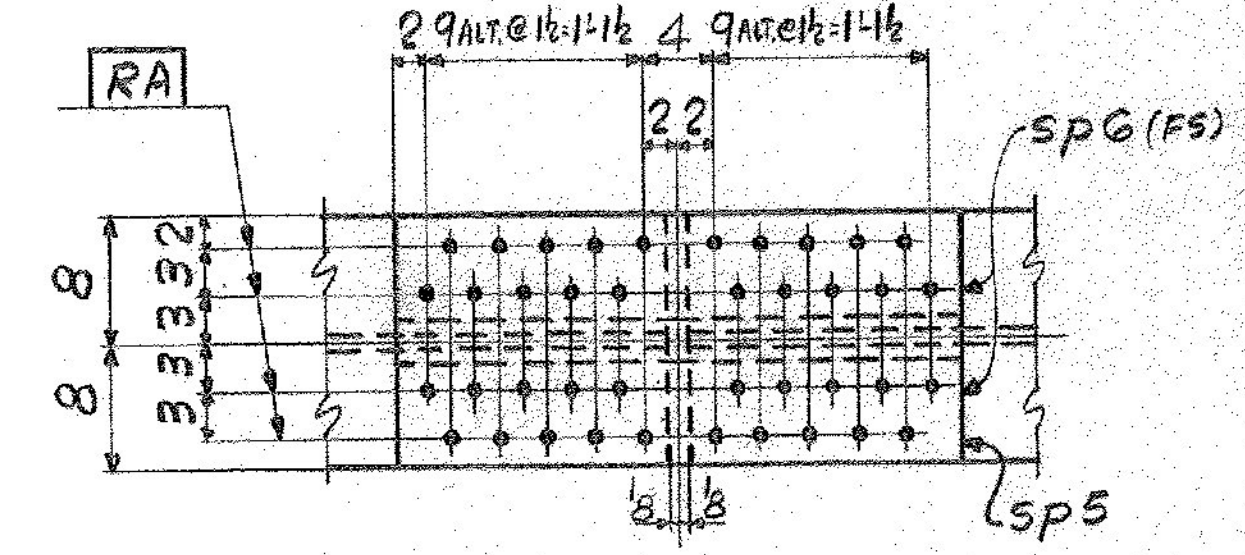
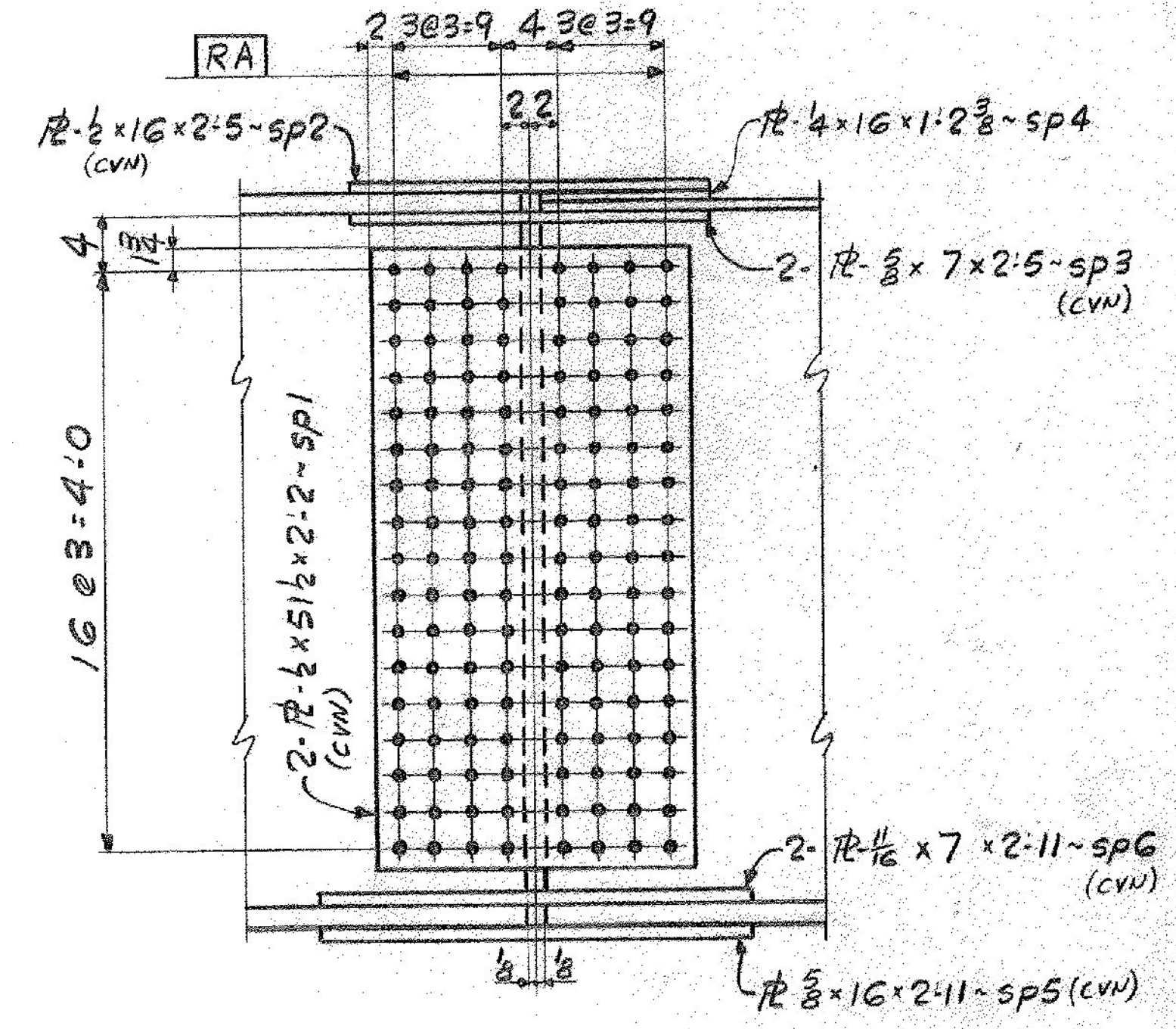
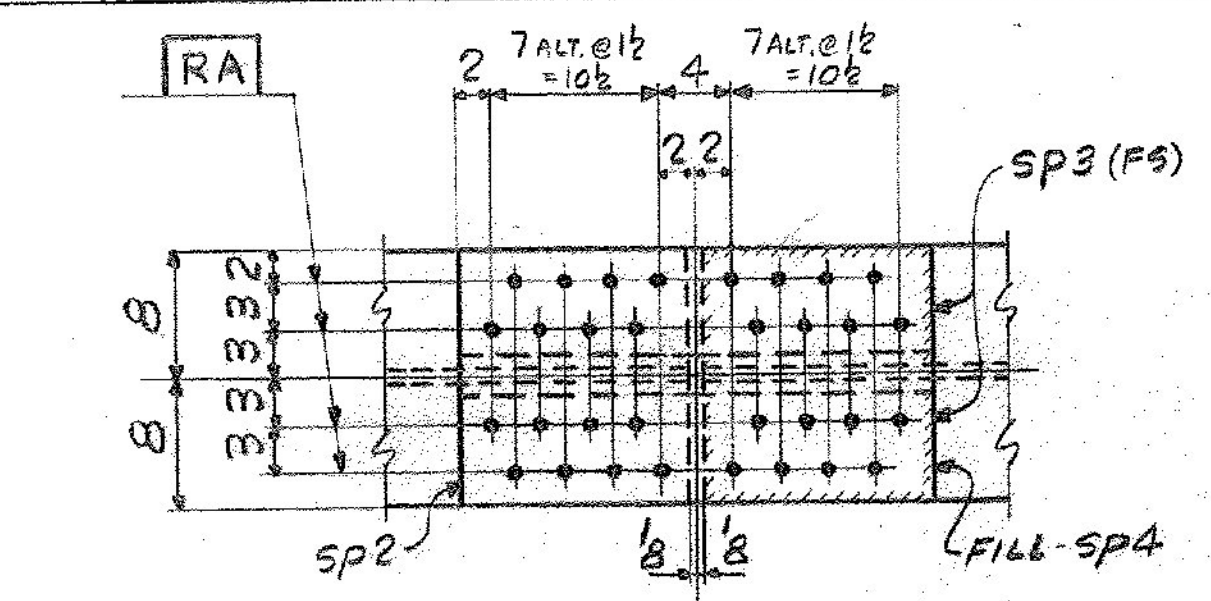
MARK	QTY	(A)
bs2	10	1'-6 3/4
bs3	2	1'-3 3/4
bs4	2	1'-5 1/2
bs5	2	1'-5 7/8
bs6	2	1'-3 3/8
bs7	2	1'-3 1/4

MARK	QTY	(B)
sf1	20	1'-3 3/4
sf2	4	1'-0 3/4
sf3	4	1'-2 1/2
sf4	4	1'-2 7/8
sf5	4	1'-0 1/8
sf6	4	1'-0 1/4

MARK	QTY	(C)
sf7	1	6 1/2
sf8	2	9 1/2
sf9	2	10 3/4
sf10	2	9 3/8
sf11	2	7 1/8
sf12	1	3 5/8
sf13	1	6 5/8
sf14	2	9 5/8
sf15	2	10 3/8
sf16	2	10"
sf17	2	7 1/4
sf18	1	3 3/4



MARK	QTY	(D)	(F)
fb1	2/2	3/8	2 3/8
fb2	1/1	1/8	3 3/8



FIELD SPICE DETAIL

SHOP NOTE:
 HOLES NOTED [RA] TO BE SUB-PUNCHED OR SUB-DRILLED 1/16" AND REAMED TO 15/16" WITH ALL PARTS ASSEMBLED OR DRILLED FULL SIZE (15/16") FROM THE SOLID WITH ALL PARTS ASSEMBLED. ALL GIRDERS MUST BE ASSEMBLED PER SHOP ASSEMBLY DIAGRAM (DWG. 52-1) PRIOR TO REAMING OR DRILLING.
 MAT'L: ASTM A588
 HOLES: 1/8" (U.N.)

IT. NO. 50G.91	BR. NO. 1	PROJ. NO. F020-1(10)
FOR APPROVAL		FOR FILES & FIELD
GIRDER COMPONENTS		
APPROVED: 5-8-89	Bancroft & Martin Inc. South Portland, Maine 04106 JOB: U.S. 4 OVER TWO-WAY RAMP WEST RUTLAND - RUTLAND, VERMONT CUSTOMER: M & J CONST. COMP. DESIGNER: STATE OF VERMONT, AGENCY OF TRANSP.	
7 3-26-84 APP.		
8 5-10-84 FAB.		
7 4-6-84 APP.		
REV. Δ	ORDER NO.	JOB NO.
CHECKED 3-20-84 RA		
DRAWN 2-23-84 ELC		
		DRAWING NO. REV.
		4-8 52-2 Δ