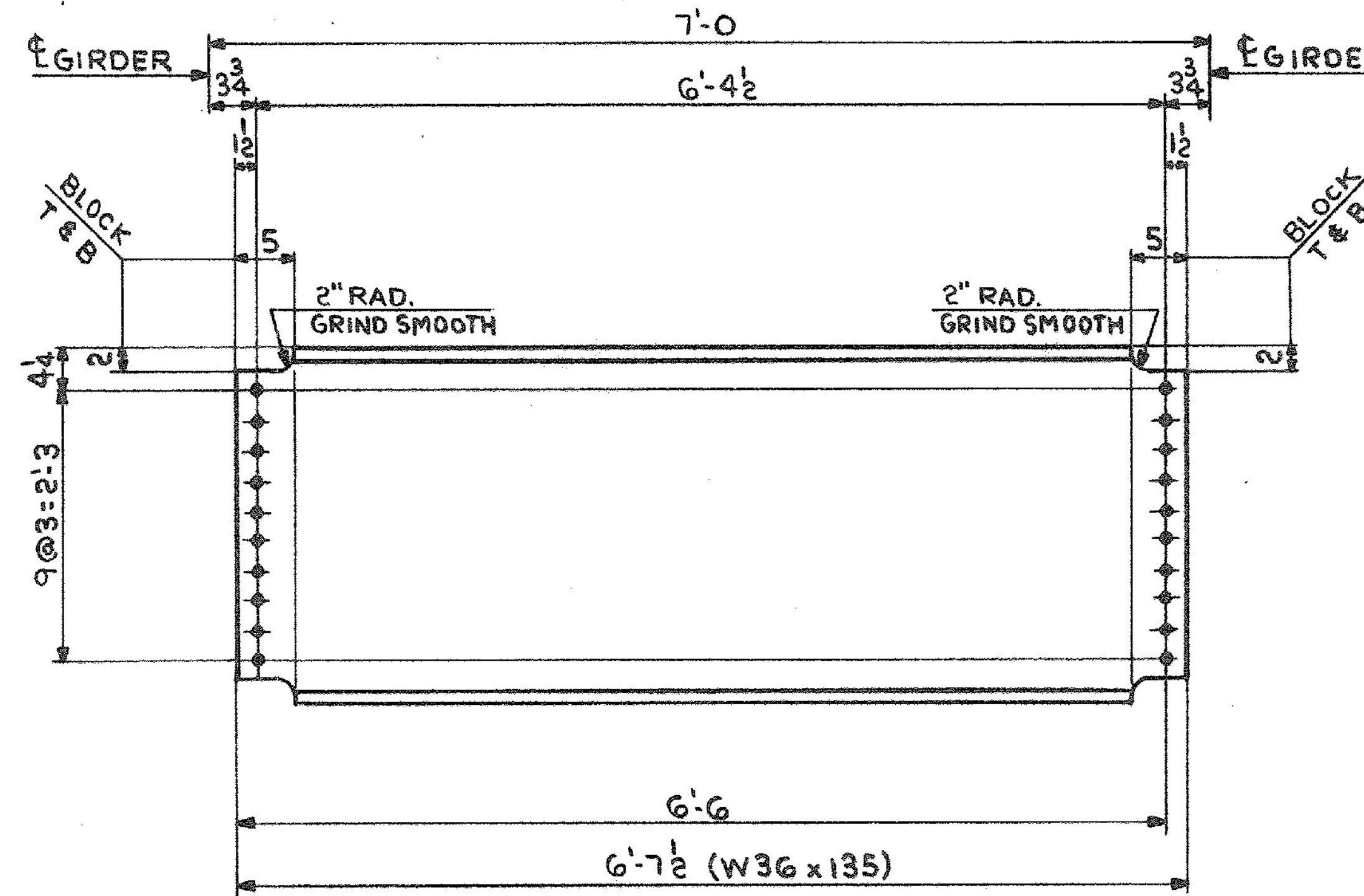


20 - DIAPHRAGMS-MK. D1



60 - DIAPHRAGMS-MK. D2

SHIP	BILL OF MATERIAL		JOB NO.	DRAWING NO.	REV.
			4-43	56-1	△

MARK	NO.	MARK	SHAPE	LENGTH	WT.	ITEM NO.	WT	REMARKS
DIAPHRAGMS								
D1	20		W36 x 135	6' 7 1/2"				2 E 1287
D2	60		W36 x 135	6' 7 1/2"				2 E 52662
								71549#

IT. NO. 506.91 BR. NO. 6 PROJ. NO. F020-1(10)

FOR APPROVAL | **FOR FILES & FIELD**

STEEL: ASTM. A36 A572 GR1 A588 GR1 Unless Noted

WELDING ELECTRODE: E70 See Welding Proc. None

SHOP CONN: Bolted Welded None

FIELD CONN: Bolted Welded None

HOLES: 13/16 15/16 Unless Noted None

PAINT: None Shopcoat Galv. After Fab. As Noted

SPECIAL PAINT: NONE

SPECIAL CLEANING: Blast Clean None SSPC-SP6

DIAPHRAGMS			
APPROVED: 2-1-85	<i>Pancroft & Martin Inc.</i> South Portland, Maine 04106 JOB: U.S. ROUTE 4 W.B. OVER OTTER CREEK RUTLAND, VERMONT CUSTOMER: EARTH CONSTRUCTION DESIGNER: STATE OF VERMONT, AGENCY OF TRANS.		
7 11-14-84 APP.			
8 2-12-85 FAB.			
ORIG 11-14-85 V.A.T.			
REV. △	CHECKED RW 12-13-84	ORDER NO.	JOB NO.
DRAWN DW 12-4-84		4-43	56-1

ALL CONNECTIONS DETAILED ON THIS DRAWING REPRESENT PANCROFT & MARTIN INC. STANDARDS. IN APPROVING THIS DRAWING FOR FABRICATION, THE ARCHITECT AND/OR ENGINEER ASSUMES THE RESPONSIBILITY FOR THE STRUCTURAL INTEGRITY OF ALL CONNECTIONS SHOWN.