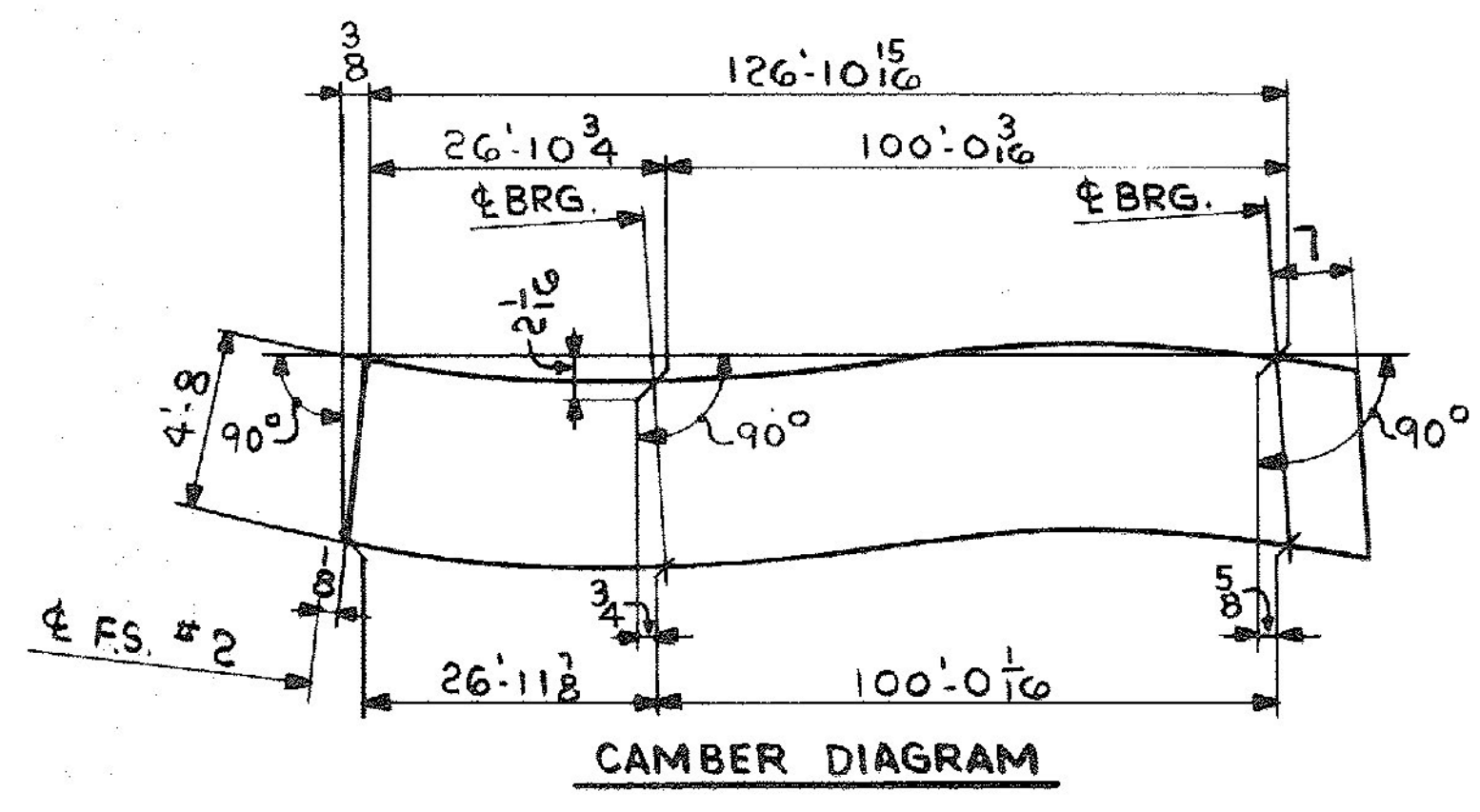
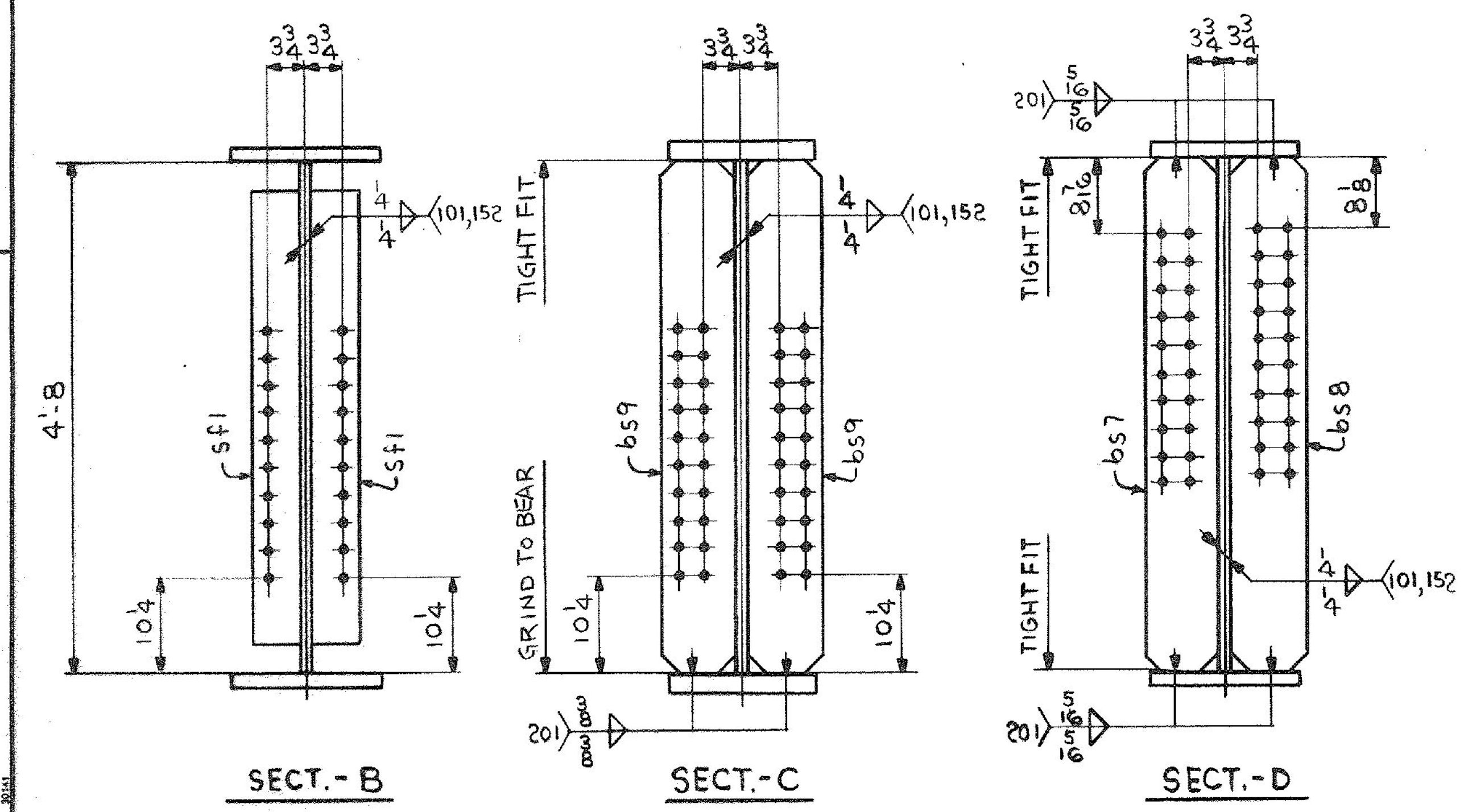


**ONE-GIRDER - G4C**  
 FOR GIRDER STANDARD DETAILS SEE DWG. 52-2.  
 FOR WEB & FLG. R CUTTING & ASSEMBLY SEE DWG. 52-1.



SHIP		BILL OF MATERIAL				JOB NO.	DRAWING NO.	REV.
G4C ONE		GIRDER				4-43	52-18	△
MARK	NO.	MARK	SHAPE	LENGTH	WT.	ITEM NO.	REMARKS	
1	WP1	R 3/8 x 57 1/16	63	9 1/2	100	1	CVN	
1	WP2	R 3/8 x 56 1/16	63	9 1/2	100	1	CVN	
1	tf1	R 1 3/4 x 16	47	0	100	1	CVN	
1	tf2	R 3/8 x 16	80	5 1/8	100	1	CVN	
1	bfi	R 1 3/4 x 16	47	0	100	1	CVN	
1	bfi2	R 3/8 x 16	80	6 1/8	100	1	CVN	
1	bs7	R 3/4 x 8	4	8	100	1	95	
1	bs8	R 3/4 x 8	4	8	100	1	95	
2	bs9	R 3/4 x 8	4	8	100	2	191	
8	sf1	R 5/8 x 5	4	2	100	8	354	

IT. NO. 506.91 BR. NO. 6 PROJ. NO. F020-1(10)

**FOR APPROVAL | FOR FILES & FIELD**

STEEL: ASTM  A36  A572 GR  A588 GR  Unless Noted

WELDING ELECTRODE:  E70  See Welding Proc.  None

SHOP CONN:  Bolted  Welded  None

FIELD CONN:  Bolted  Welded  None

HOLES:  13/16  15/16  Unless Noted  None

PAINT:  None  Shopcoat  Galv. After Fab.  As Noted

SPECIAL PAINT: NONE

SPECIAL CLEANING:  Blast Clean  None  SSPC-SP6

**GIRDER - G4C**

APPROVED: 2-1-85  
 PRINT DIST. 7 12-19-84 APP. 8 2-12-85 FAB. DWG. 11-14-85 VAT

*Bancroft & Martin Inc*  
 South Portland, Maine 04106

JOB: U.S. ROUTE 4 W.B. OVER OTTER CREEK  
 RUTLAND, VERMONT

CUSTOMER: EARTH CONSTRUCTION  
 DESIGNER: STATE OF VERMONT, AGENCY OF TRANS.

REV. △	CHECKED	DRAWN	DATE	ORDER NO.	JOB NO.	DRAWING NO.	REV.
	RW	DW	12-19-84		4-43	52-18	△