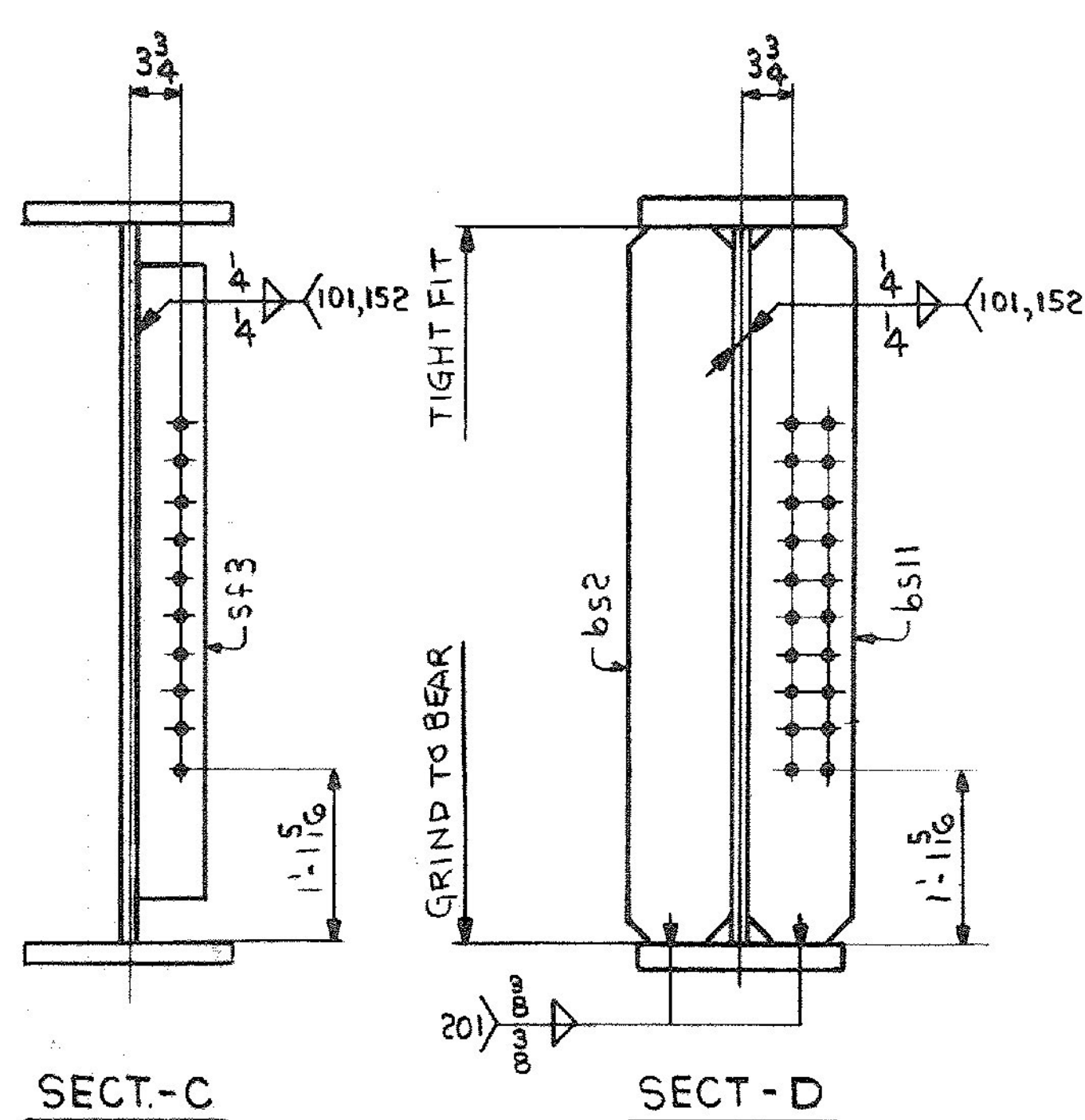
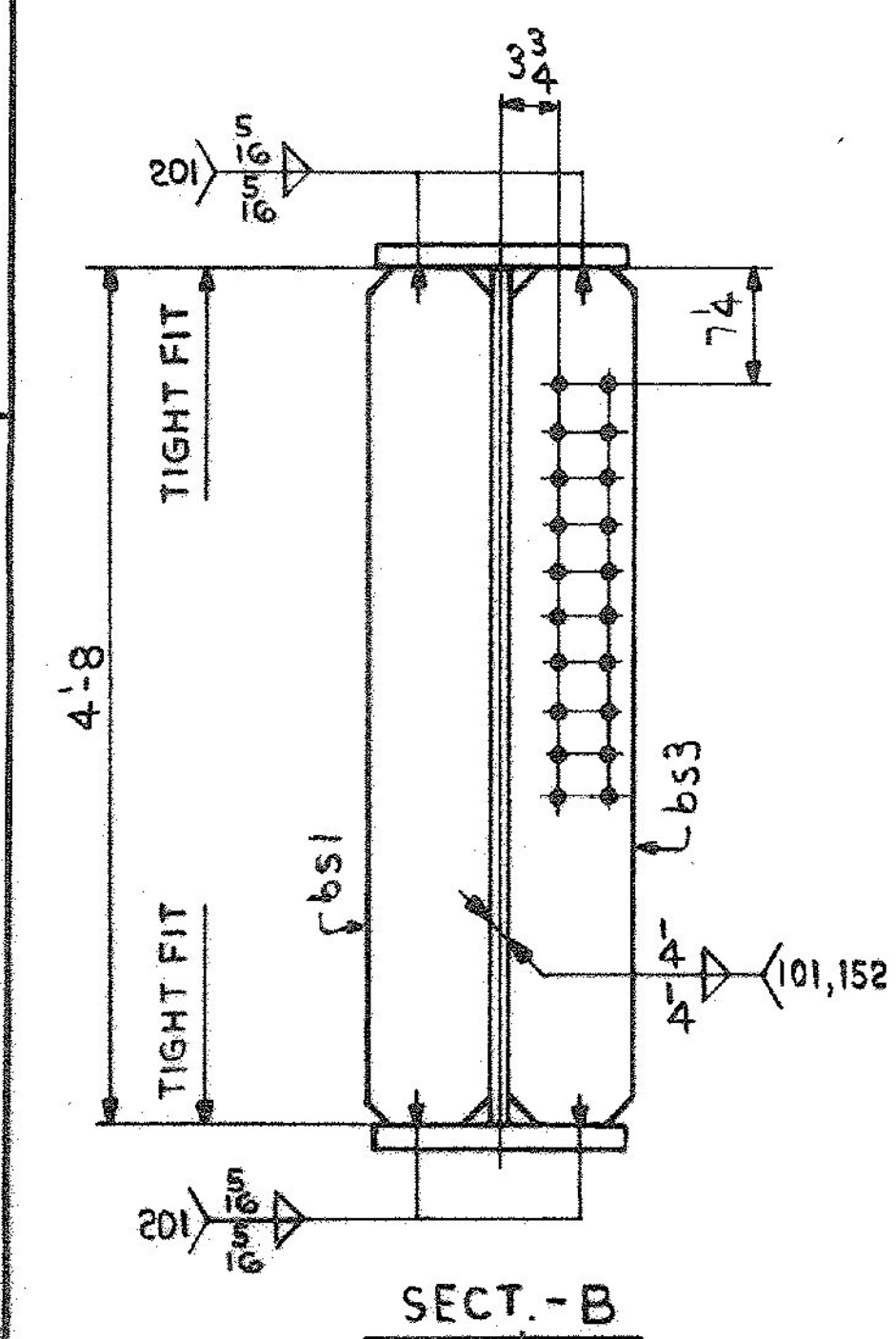
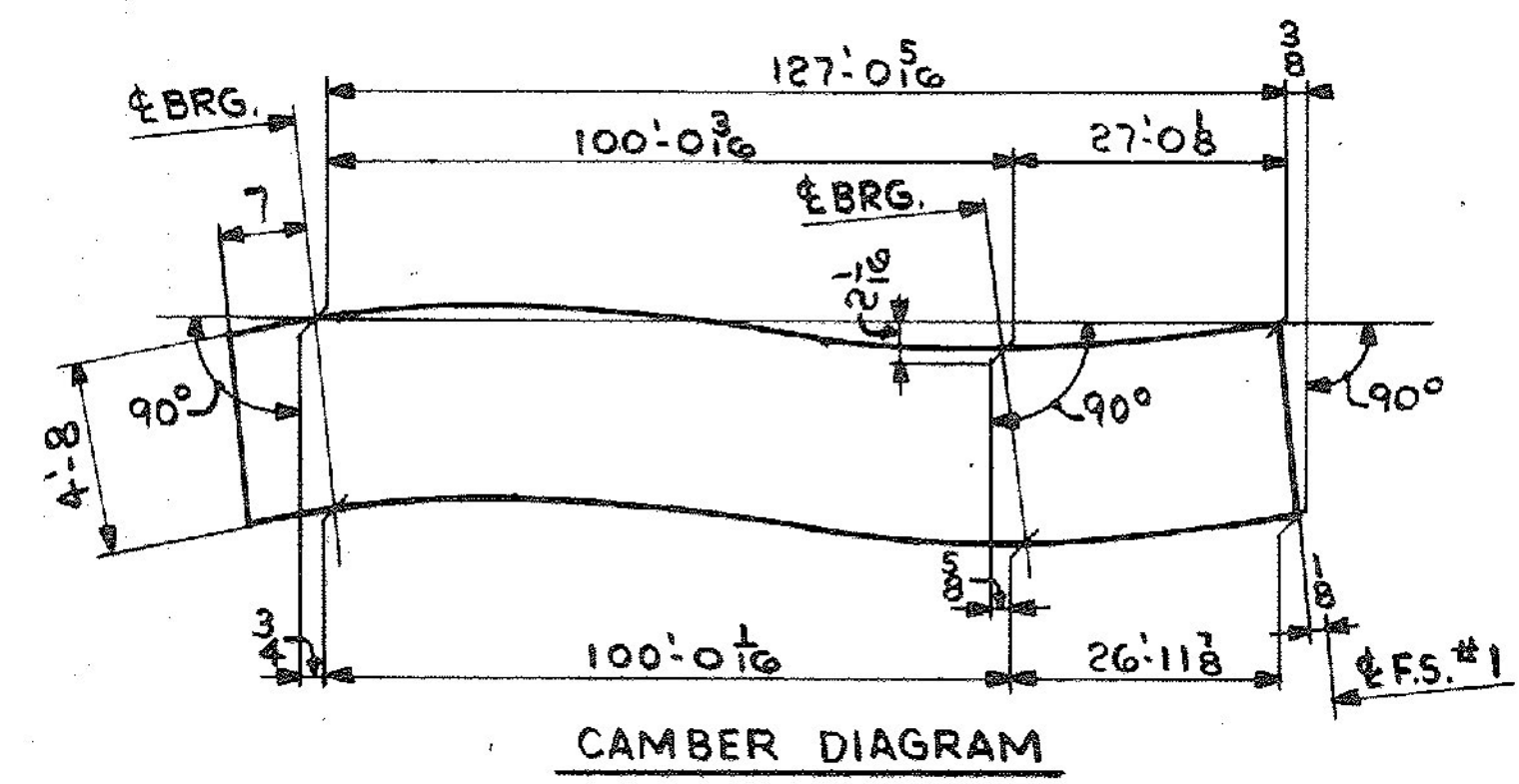
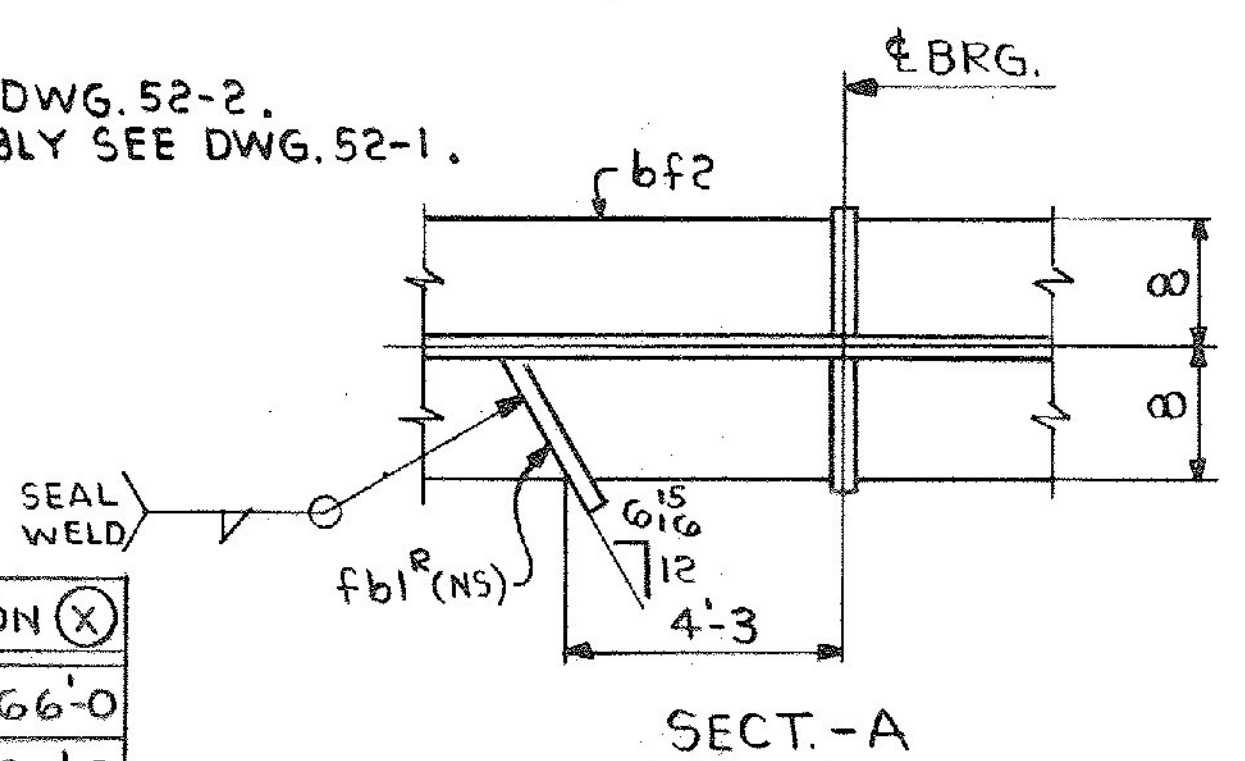


ONE-GIRDER-GGA  
 FOR GIRDER STANDARD DETAILS SEE DWG. 52-2.  
 FOR WEB & FLG. & CUTTING & ASSEMBLY SEE DWG. 52-1.



DIMENSION (X)	
2'-0	66'-0
6'-0	70'-0
10'-0	74'-0
14'-0	78'-0
18'-0	82'-0
22'-0	86'-0
26'-0	90'-0
30'-0	94'-0
34'-0	98'-0
38'-0	102'-0
42'-0	106'-0
46'-0	110'-0
50'-0	114'-0
54'-0	118'-0
58'-0	122'-0
62'-0	126'-0



SHIP		BILL OF MATERIAL				JOB NO.	DRAWING NO.	REV.
GGA ONE		GIRDER				4-43	52-8	△
MARK	NO.	MARK	SHAPE	LENGTH	WT.	ITEM	REMARKS	
	1	wp1	R 3/8 x 56 1/16	63 10	57 1/2 x 2 1/2	1 B	CVN	
	1	wp2	R 3/8 x 57 1/16	63 9 1/16	57 1/2 x 2 1/2	1 C	CVN	
	1	tf1	R 3/8 x 16	80 7 5/16	1 1/2 x 10	1 F	3840	
	1	tf2	R 3/8 x 16	47 0	1 1/2 x 10	1 H	4470	CVN
	1	bfi	R 3/8 x 16	80 6 1/16	1 1/2 x 9	1 G	3837	CVN
	1	bfi	R 3/8 x 16	47 0	1 1/2 x 9	1 I	4470	CVN
	1	bs1	R 3/4 x 8	4 8	6 x 8	2 B	95	
	1	bs2	R 3/4 x 8	4 8	3 1/2 x 8	2 B	95	
	1	bs3	R 3/4 x 8	4 8	10 x 8	2 B	95	
	1	bs11	R 3/4 x 8	4 8	10 x 8	2 B	95	
	4	sf3	R 5/8 x 5	4 2	24 x 21 x 0	2 C	177	
	1	fbiR	R 4 x 3 3/4	0 10 3/8	60 P	2 G	3	

IT. NO. 506.91 BR. NO. 6 PROJ. NO. F020-1(10)

**FOR APPROVAL** **FOR FILES & FIELD**

STEEL: ASTM  A36  A572 GR  A588 GR  Unless Noted

WELDING ELECTRODE:  E70  See Welding Proc.  None

SHOP CONN:  Bolted  Welded  None

FIELD CONN:  Bolted  Welded  None

HOLES:  13/16  15/16  Unless Noted  None

PAINT:  None  Shopcoat  Galv. After Fab.  As Noted

SPECIAL PAINT: NONE

SPECIAL CLEANING:  Blast Clean  None  SSPC-SP6

GIRDER - GGA

APPROVED: 2-1-85  
 PRINT DIST.  
 7 12-14-84 APP.  
 8 2-12-85 FAB.  
 0 RLG 11-19-85 V.A.T.

**Bancroft & Martin Inc.**  
 South Portland, Maine 04106

JOB: U.S. ROUTE 4 W.B. OVER OTTER CREEK  
 RUTLAND, VERMONT

CUSTOMER: EARTH CONSTRUCTION  
 DESIGNER: STATE OF VERMONT, AGENCY OF TRANS.

REV. Δ  
 CHECKED RW 12-19-84  
 DRAWN DW 11-28-84

ORDER NO. 4-43 JOB NO. 52-8 DRAWING NO. REV. Δ