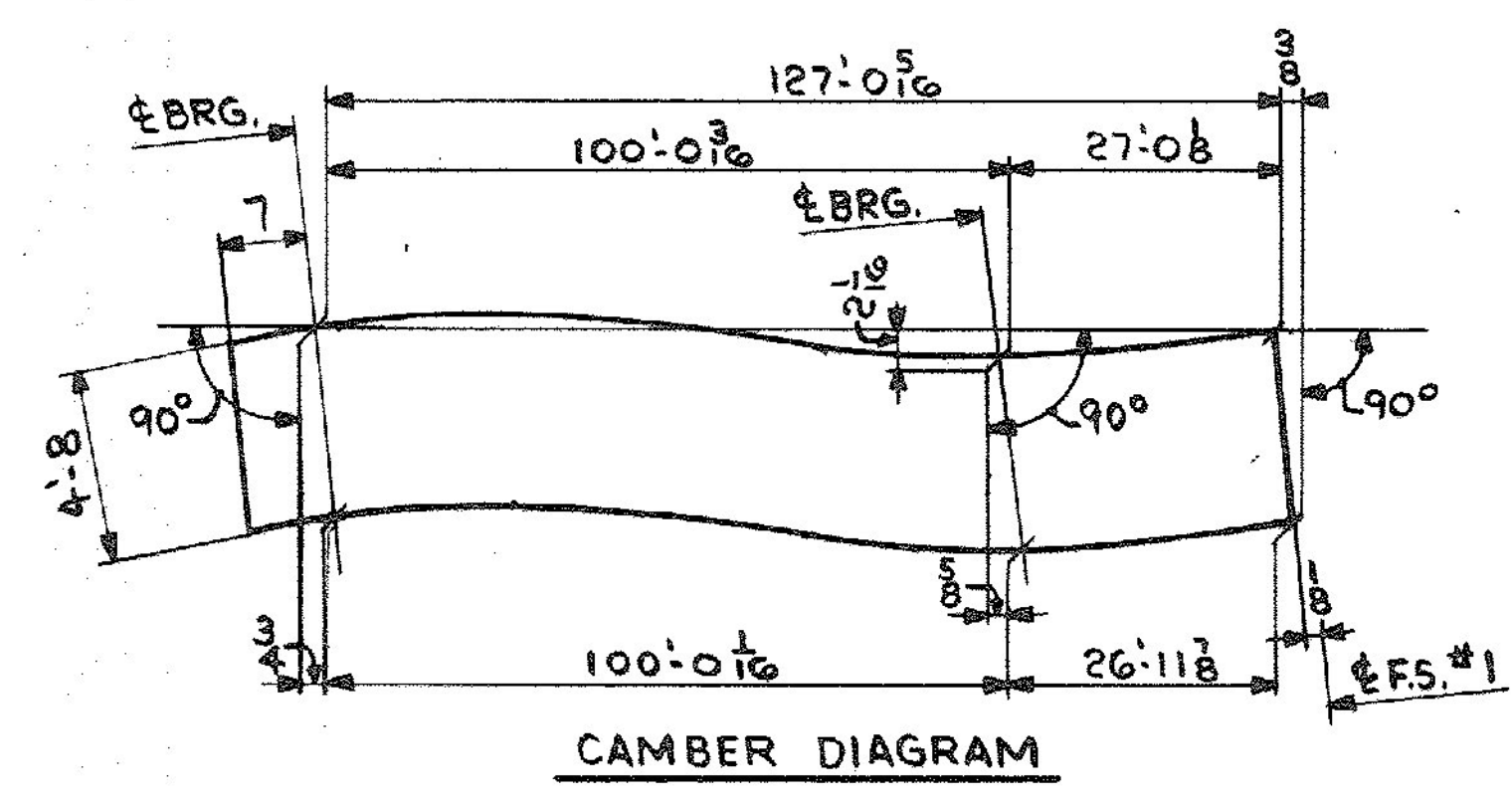
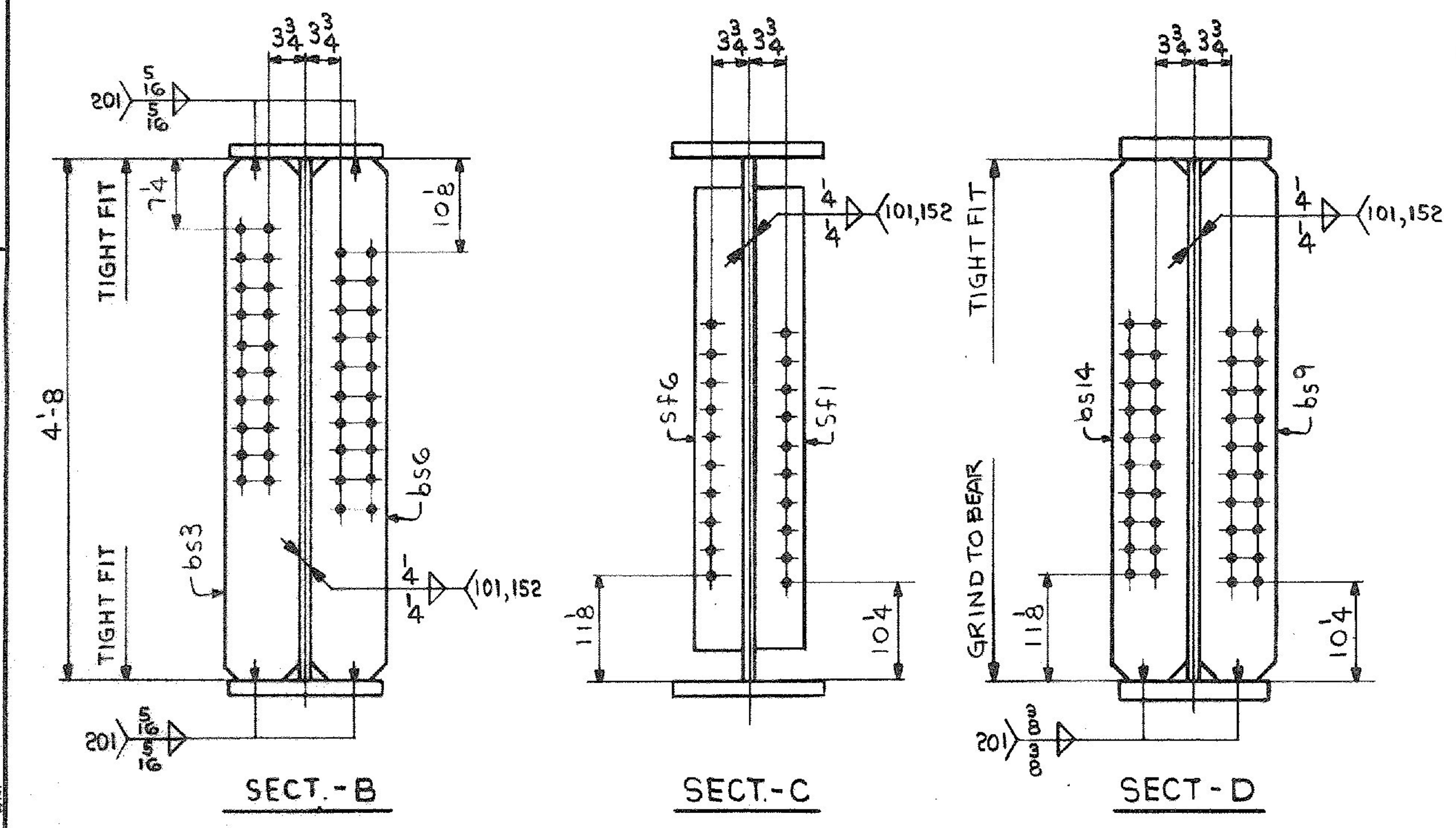


ONE-GIRDER - G3A
 FOR GIRDER STANDARD DETAILS SEE DWG. 52-2.
 FOR WEB & FLG. & CUTTING & ASSEMBLY SEE DWG. 52-1.



SHIP		BILL OF MATERIAL				JOB NO.	DRAWING NO.	REV.
G3A		ONE	GIRDER			4-43	52-5	△
MARK	NO.	MARK	SHAPE	LENGTH	WT.	ITEM	REMARKS	
	1	WP1	R 5/8 x 56 1/16	63	10		CVN	
	1	WP2	R 5/8 x 57 1/16	63	9 1/16		CVN	
	1	tf1	R 3/4 x 16	80	7 5/16		CVN	
	1	tf2	R 3/4 x 16	47	0		CVN	
	1	bfi	R 3/4 x 16	80	6 1/16		CVN	
	1	bfi	R 3/4 x 16	47	0		CVN	
	1	bs3	R 3/4 x 8	4	8		95	
	1	bs6	R 3/4 x 8	4	8		95	
	1	bs9	R 3/4 x 8	4	8		95	
	1	bs14	R 3/4 x 8	4	8		95	
	4	SF1	R 5/8 x 5	4	2		117	
	4	SF6	R 5/8 x 5	4	2		177	

IT. NO. 506.91 BR. NO. 6 PROJ. NO. F020-1(10)

FOR APPROVAL **FOR FILES & FIELD**

STEEL: ASTM A36 A572 GR A588 GR Unless Noted

WELDING ELECTRODE: E70 See Welding Proc. None

SHOP CONN: Bolted Welded None

FIELD CONN: Bolted Welded None

HOLES: 13/16 15/16 Unless Noted None

PAINT: None Shopcoat Galv. After Fab. As Noted

SPECIAL PAINT: NONE

SPECIAL CLEANING: Blast Clean None SSPC-SP6

GIRDER - G3A

APPROVED: 2-1-85
 PRINT DIST.
 7 12-14-84 APP.
 8 2-12-85 FAB.
 ORIG 11-14-85 IAT

Rancroft & Martin Inc.
 South Portland, Maine 04106

JOB: U.S. ROUTE 4 W.B. OVER OTTER CREEK
 RUTLAND, VERMONT

CUSTOMER: EARTH CONSTRUCTION

DESIGNER: STATE OF VERMONT, AGENCY OF TRANS.

REV. △
 CHECKED R.W.
 DRAWN DW

ORDER NO. 4-43 JOB NO. 52-5 DRAWING NO. 52-5 REV. △