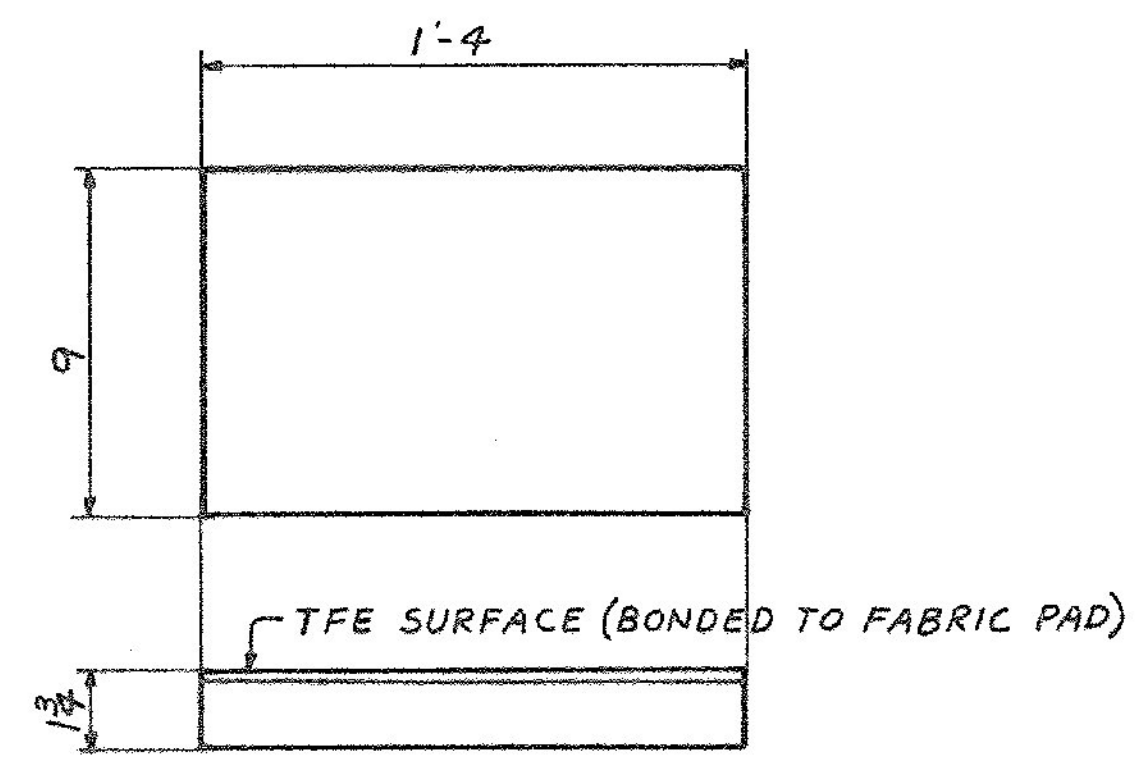
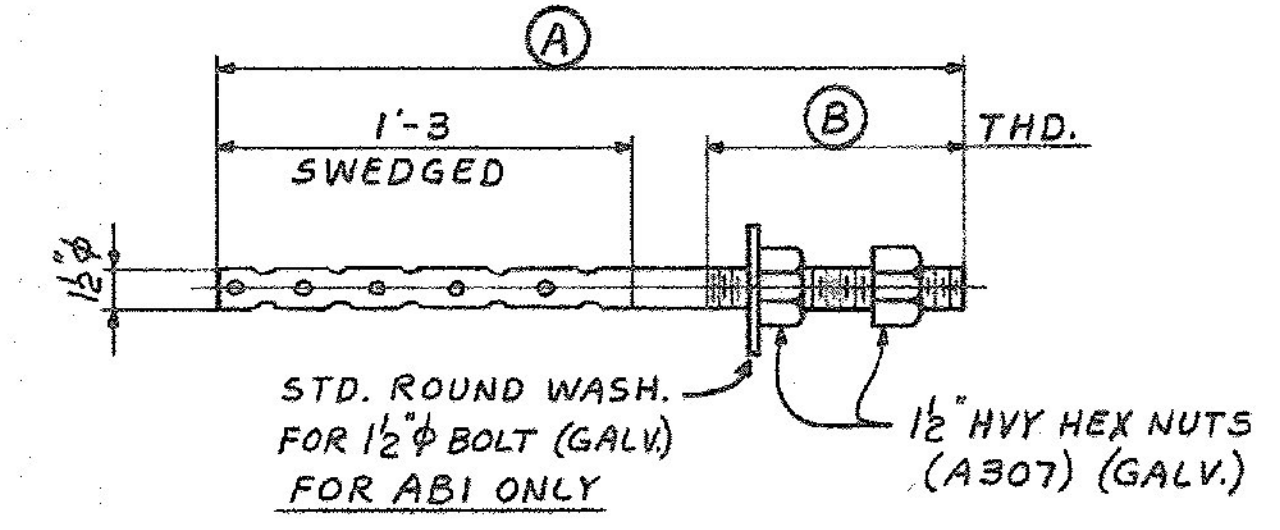


6 ~ SOLE PLATES - MK. SPI  
(SEE NOTE 2 & NOTE 3)  
6 ~ SOLE PLATES - MK. SP2



12 ~ PREFORMED FABRIC PADS ~ MK. FPI  
(AS PER SECT. 731.01 & 731.10  
OF VERMONT STD. SPECS.)



ANCHOR BOLTS  
(GALV. PER ASTM A153 AFTER FAB.)

MARK	NO. REQD	(A)	(B)
AB1	24	2'-0	8
AB2	48	2'-3	11

- NOTES:**
1. ✓ DENOTES MAXIMUM SURFACE ROUGHNESS ALLOWABLE (IN MICRO INCHES), AS DEFINED IN A.S.A. B46.1 - SURFACE ROUGHNESS, WAVINESS & LAY, PART I.
  2. SOLE PLATE - SPI SHALL BE GALVANIZED AS PER SPECIAL PROVISION 731.06 (A36 STL. ONLY, NOT STAINLESS).
  3. PRIOR TO GALVANIZING, ALL CORNERS AND EDGES OF STEEL PLATES (SOLE PLATE - SPI) SHALL BE GROUND TO A 1/16 INCH RADIUS.

ALL CONNECTIONS DETAILED ON THIS DRAWING REPRESENT BANCROFT & MARTIN INC. STANDARDS. IN APPROVING THIS DRAWING FOR FABRICATION, THE ARCHITECT AND/OR ENGINEER ASSUMES THE RESPONSIBILITY FOR THE STRUCTURAL INTEGRITY OF ALL CONNECTIONS SHOWN.

SHIP		BILL OF MATERIAL				JOB NO.	DRAWING NO.	REV.
						4-47	51-1	△
MARK	NO.	MARK	SHAPE	LENGTH	WT.	ITEM NO.	WT.	REMARKS
PREFORMED FABRIC PADS								
FPI	12		PAD 1 3/4 x 9	1	4			TFE SURFACE 1-SIDE
ANCHOR BOLTS								
AB1	24		ROD 1/2"	2	0			GALV.
AB2	48		ROD 1/2"	2	3			GALV.
	144		1/2" HVY HEX NUTS					A307
	24		STD. ROUND WASHERS					
SOLE PLATES								
SP2	6		SOLE PLATES					
	6	P3	PL 1 1/4 x 14	2	1			F15 GALV.
	6	P2	SHT. 1 1/4 x 13 1/2	1	5			F15 STAINLESS STL. A307 TYPE 304

IT. NO. 506.99 BR. NO. G PROJ. NO. F020-1(10)

**FOR APPROVAL** | **FOR FILES & FIELD**

STEEL: ASTM  A36  A572 GR.  A588 GR.  Unless Noted

WELDING ELECTRODE:  E70  See Welding Proc.  None

SHOP CONN:  Bolted  Welded  None

FIELD CONN:  Bolted  Welded  None

HOLES:  T3/T6  T5/T6  AS NOTED  Unless Noted  None

PAINT:  None  Shopcoat  Galv. After Fab.  As Noted

SPECIAL PAINT: NONE

SPECIAL CLEANING:  Blast Clean  None  SSPC-SP6

BRIDGE SHOES (WESTBOUND BRIDGE)

APPROVED: 3-19-84

PRINT DIST.

7	12-14-84	APP.
8	3-20-84	FAB.
NIL		F&F.
7	3-1-85	APP.
ORIG	11-14-85	VAT

JOB: U.S. 4 OVER OTTER CREEK  
RUTLAND, VERMONT

CUSTOMER: MASKELL FENCE CO.

DESIGNER: STATE OF VERMONT AGENCY OF TRANS.

REV. △	ORDER NO.	JOB NO.	DRAWING NO.	REV.
CHECKED 12-12-84 RWH		4-47	51-1	△
DRAWN 11-14-84 RLA				