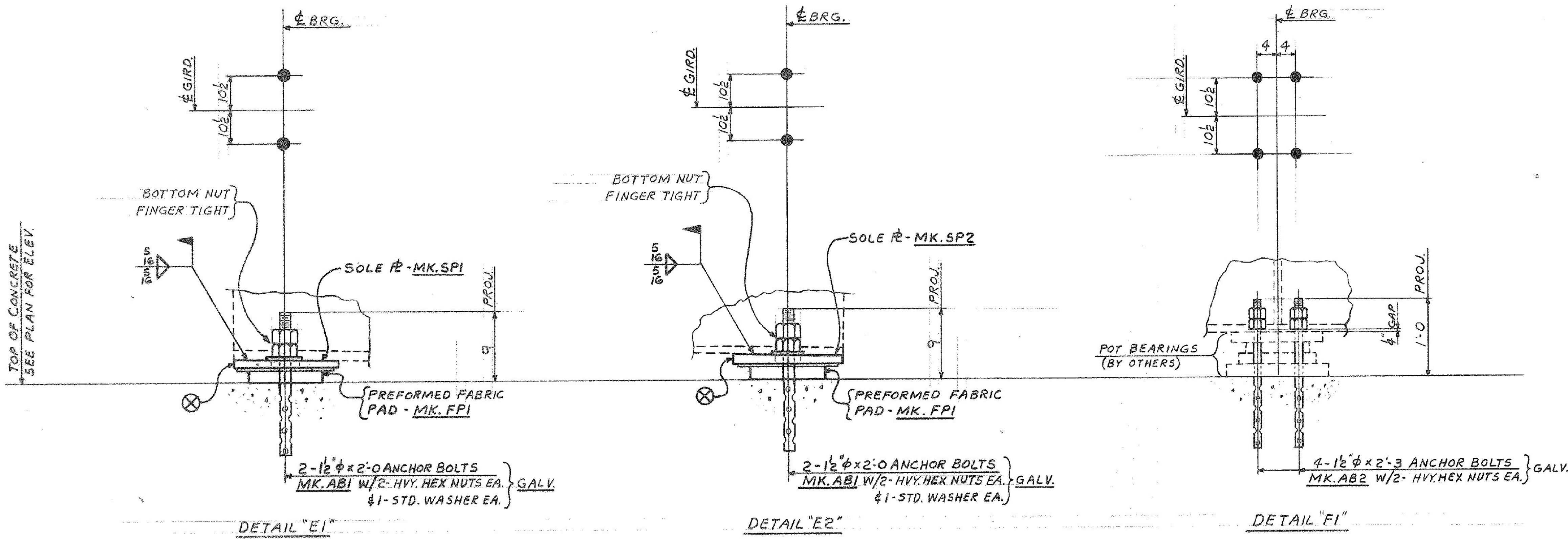


WESTBOUND ANCHOR BOLT PLAN



- NOTES:**
1. ALL DIMENSIONS ARE TAKEN IN A HORIZONTAL PLANE.
 2. ALL DIMENSIONS MUST BE STRICTLY ADHERED TO, OTHERWISE STEEL WILL NOT FIT. IN CASE OF ERROR, NOTIFY BANCROFT & MARTIN INC. AT ONCE.
 3. ANCHOR BOLTS ARE FURNISHED BY BANCROFT & MARTIN INC. AND SET BY OTHERS.
 4. SOLE PLATES TO BE POSITIONED AND WELDED IN THE FIELD BEFORE THE DECK POUR.
 5. THICKER EDGE OF BEV. SOLE PLATE IS MARKED: ⊗.

IT. NO. 506.99	BR. NO. G	PROJ. NO. F020-1(10)		
FOR APPROVAL		FOR FILES & FIELD		
ANCHOR BOLT PLAN (WESTBOUND)				
APPROVED: 3-19-84	<i>Bancroft & Martin Inc.</i> South Portland, Maine 04106 JOB: U.S.4 OVER OTTER CREEK RUTLAND, VERMONT CUSTOMER: MASKELL FENCE CO. DESIGNER: STATE OF VERMONT AGENCY OF TRANSP.			
7 12-14-84 APP.				
8 3-20-84 FAB.				
NR F&F.				
7 3-1-85 APP.				
0216 11-14-85 VAT				
REV. Δ	ORDER NO.	JOB NO.	DRAWING NO.	REV.
CHECKED 12-12-84 RW		4-47	E-1	Δ
DRAWN 11-6-84 RLA				