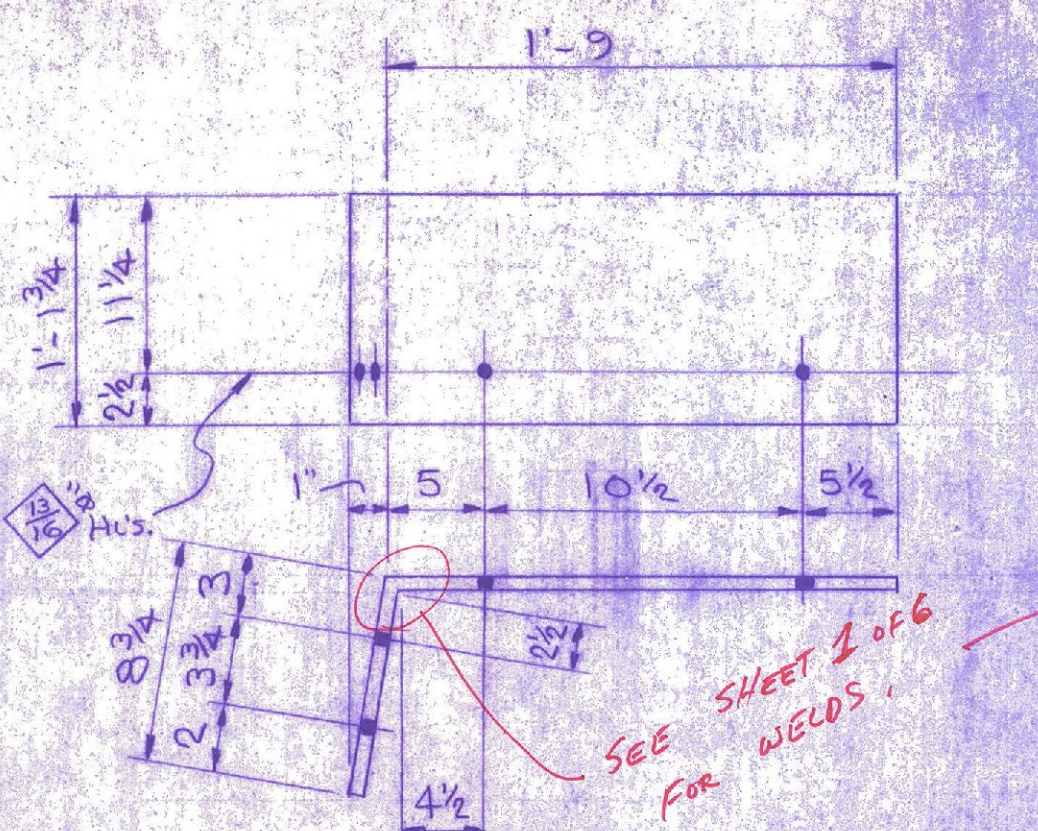
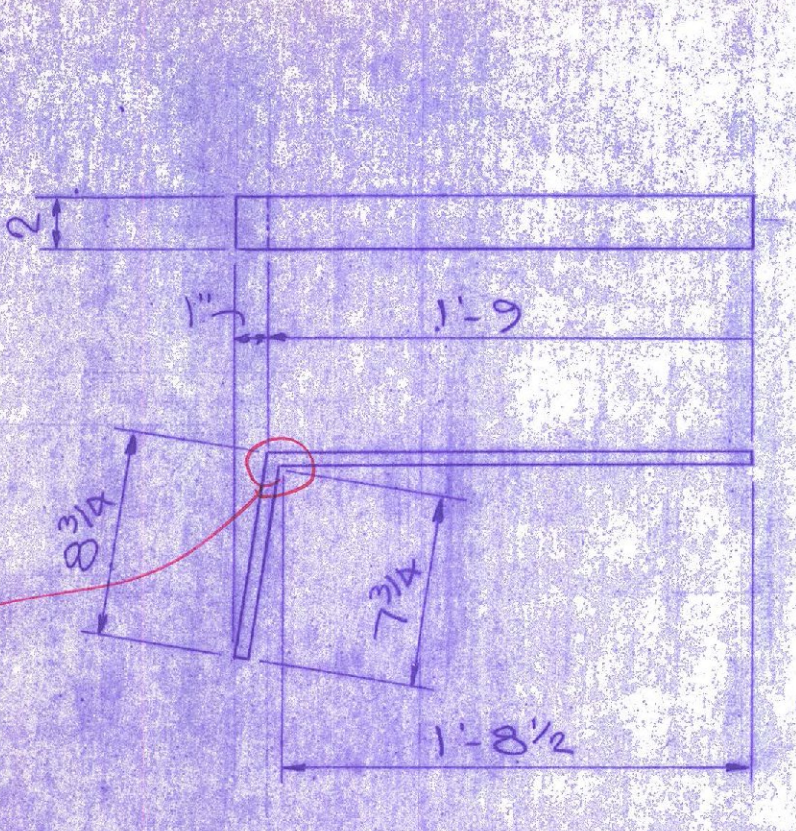


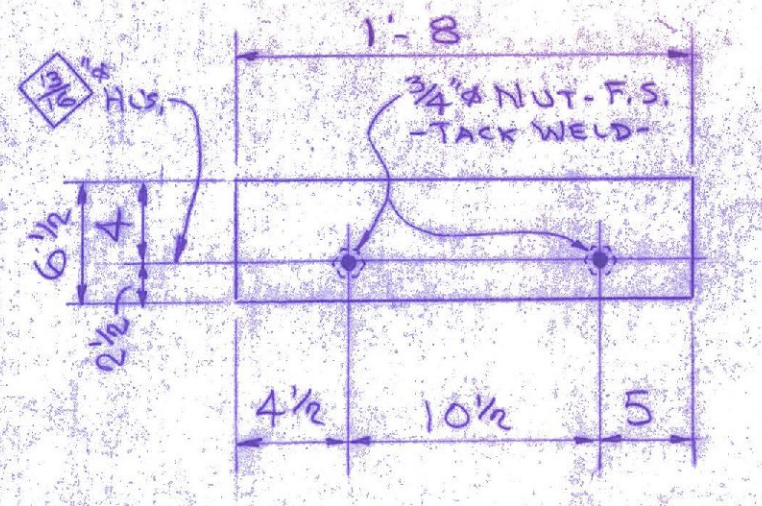
DETAIL OF R (m)



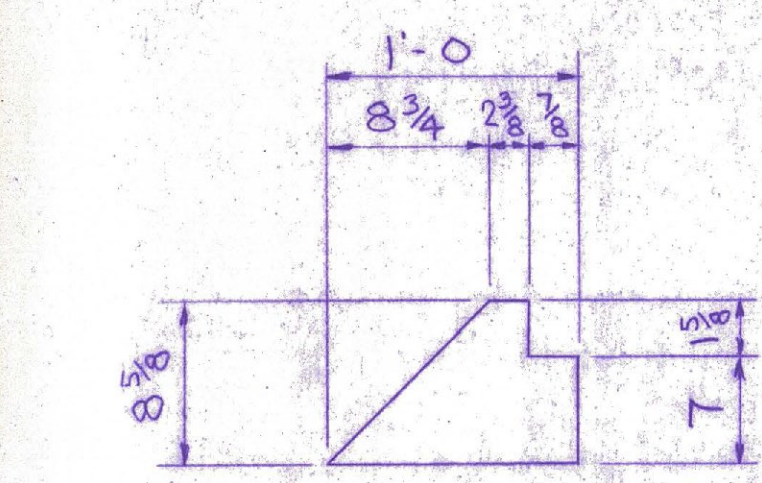
DETAIL OF R (n)<sup>2</sup> (As Shown)  
DETAIL OF R (n)<sup>2</sup> (OPP. HAND)



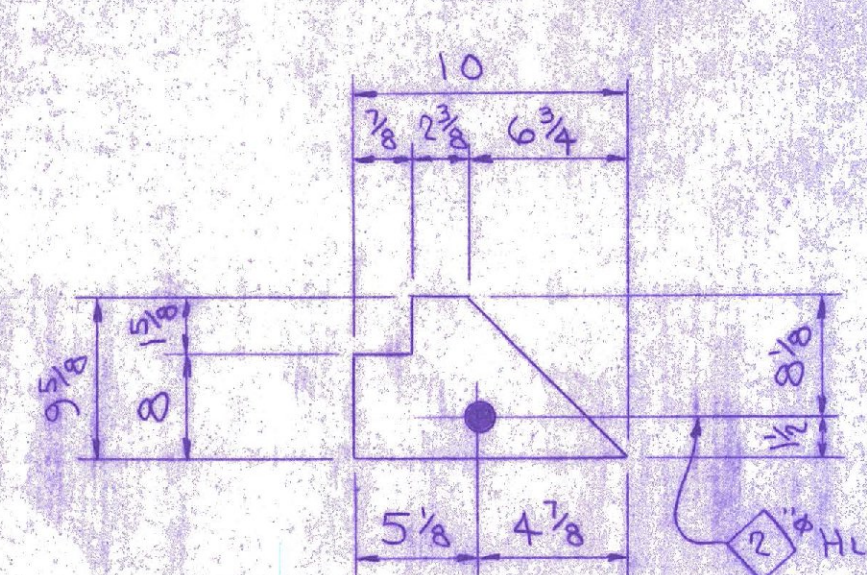
DETAIL OF BAR (p)



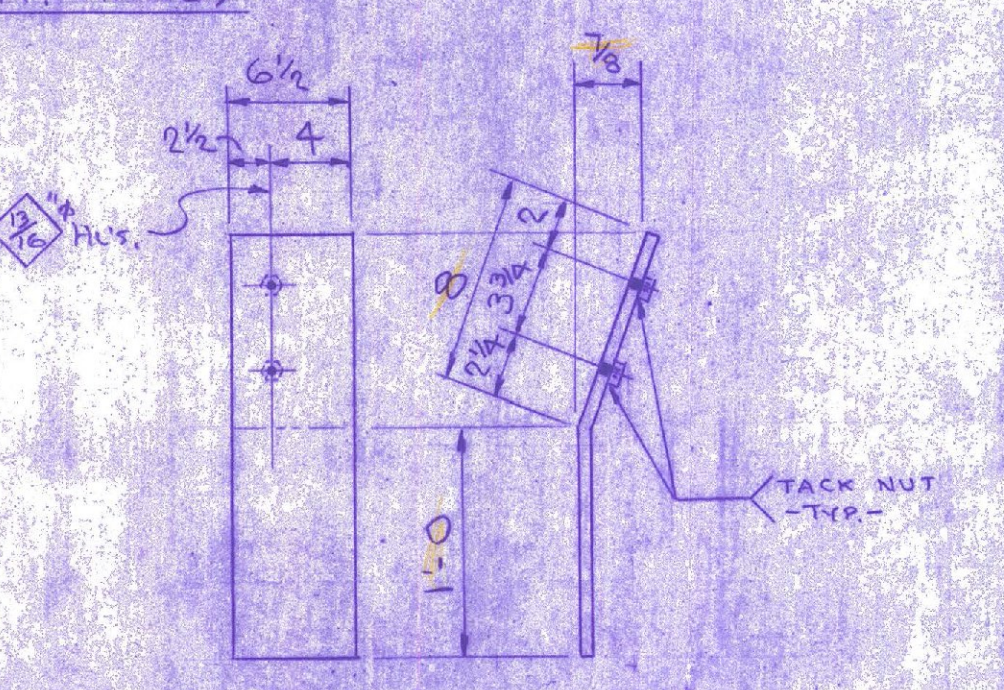
DETAIL OF R (s)<sup>2</sup> (SHOWN)  
DETAIL OF R (s)<sup>2</sup> (OPP. HAND)



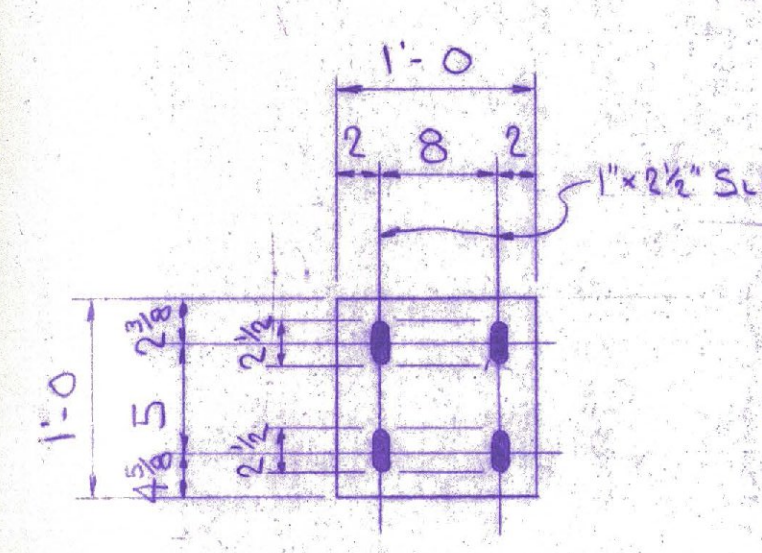
DETAIL OF R (c)



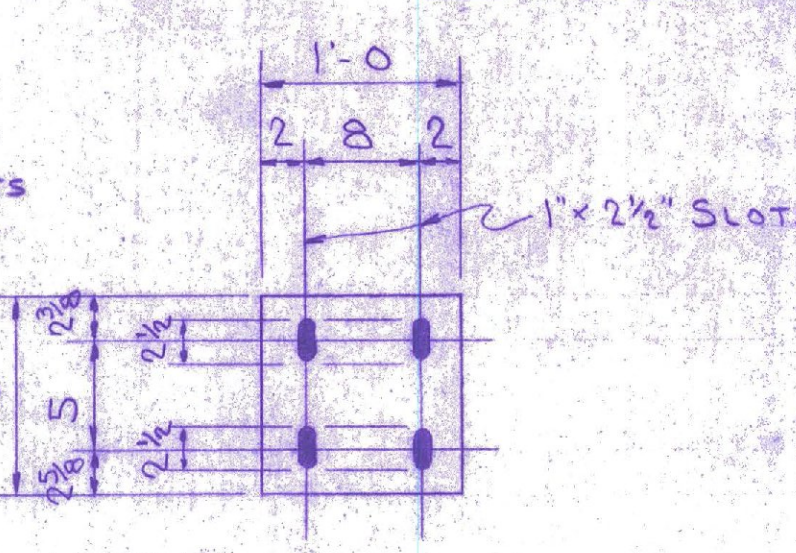
DETAIL OF R (d)



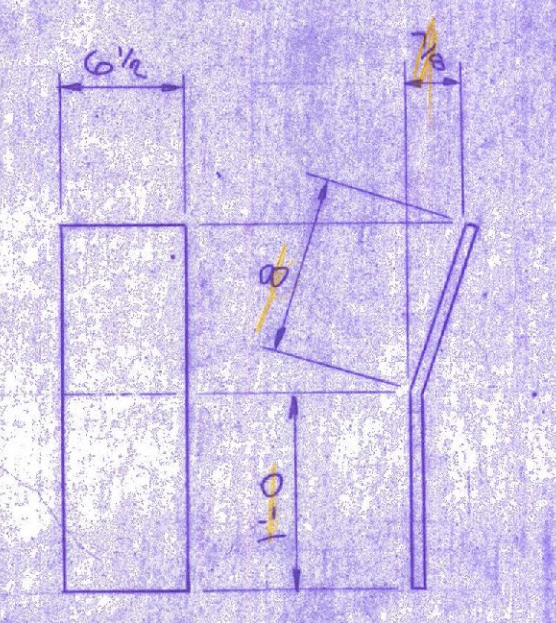
DETAIL OF R (t)<sup>2</sup> (SHOWN)  
DETAIL OF R (t)<sup>2</sup> (OPP. HAND)



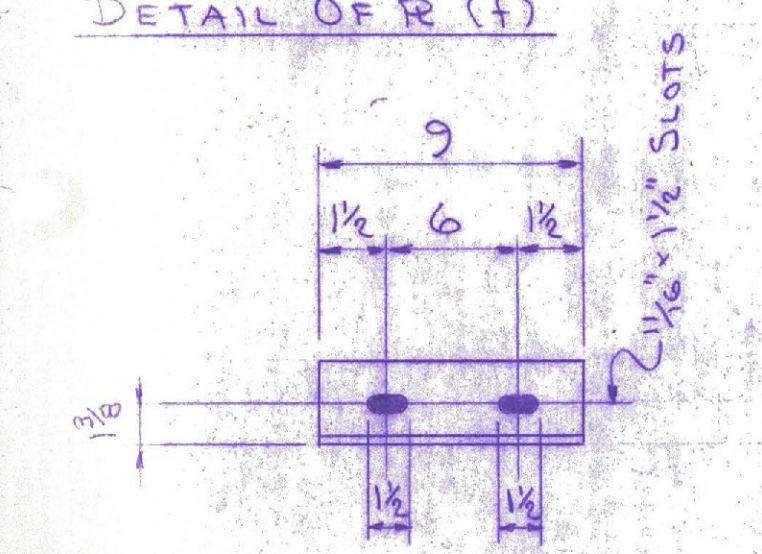
DETAIL OF R (f)



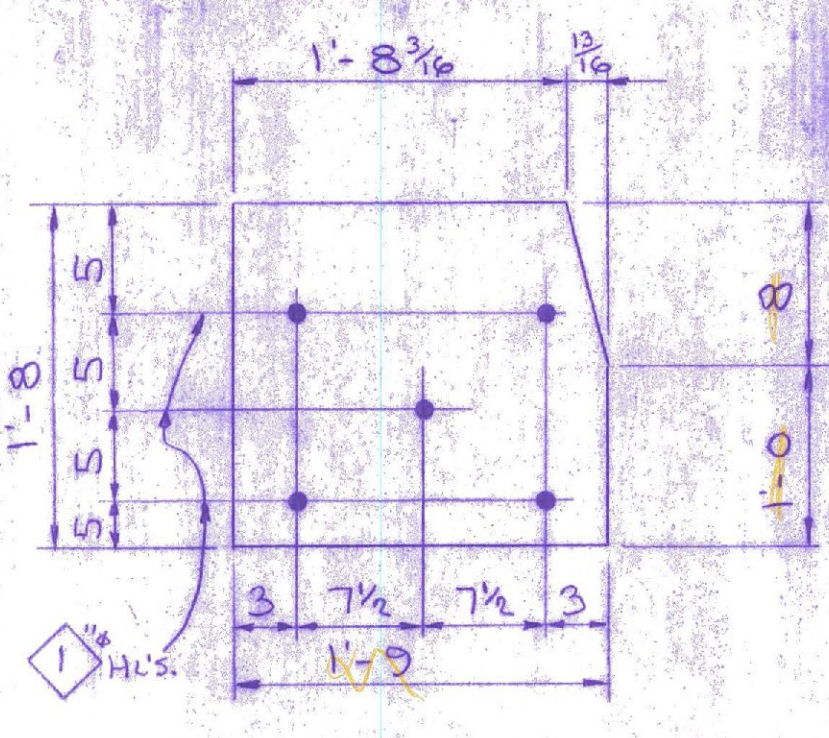
DETAIL OF R (g)



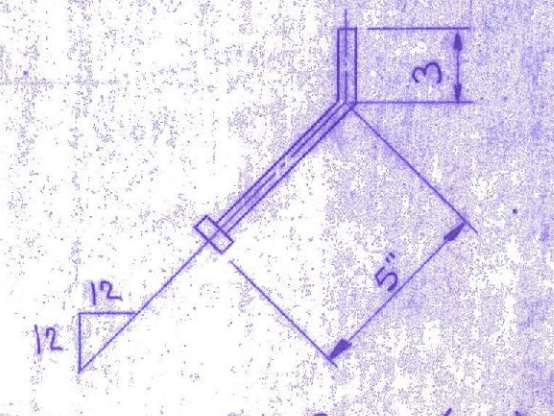
DETAIL OF R (v)



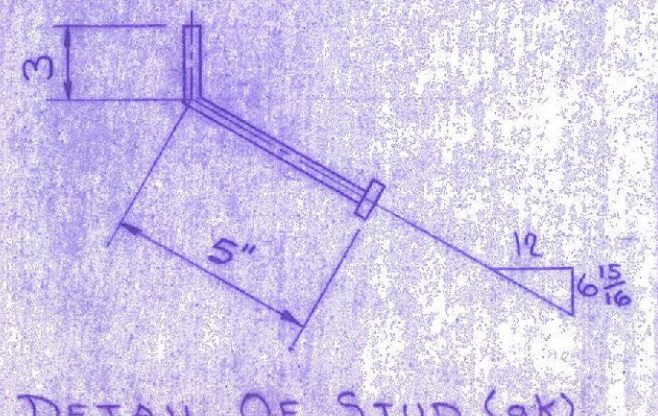
DETAIL OF L (h)



DETAIL OF R (k)



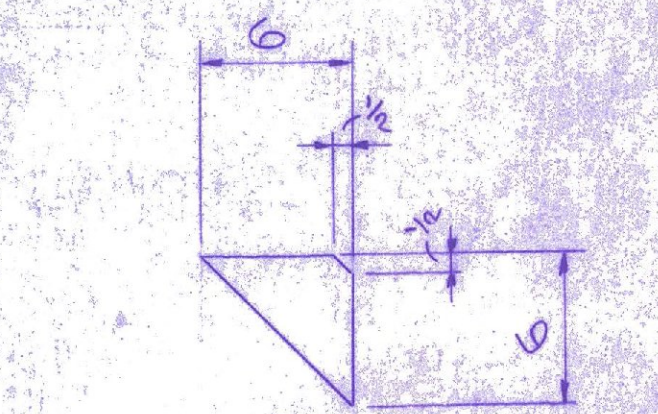
DETAIL OF STUD (ah)



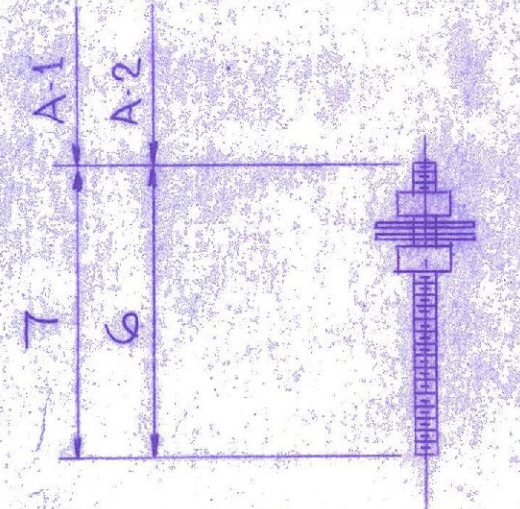
DETAIL OF STUD (ak)  
D.S. BROWN PD #4340

RECEIVED OCT 1 1985  
CHK'D BY *AW* OK'D BY *AW*  
RESUBMIT APPROVED  
BY *Wm & Louis* DATE 10/1/85

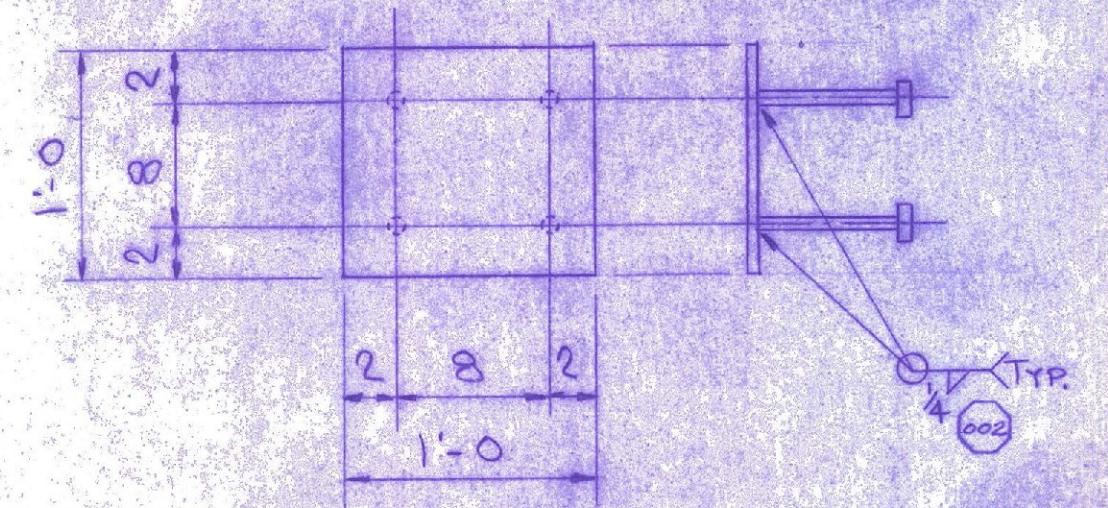
Mk	QTY	DESCRIPTION	LENGTH FT. IN.	REMARKS	IDENTIFICATION LETTERS
EJ1	2	EXPANSION JOINTS (As Shown)			a bb AA
EJ2	2	EXPANSION JOINTS (OPP. HAND)			b dd BB
AE	4	D.S. BROWN MODIF. EXTR. 37 2 1/2		SEE DET. SHT. 2A	c ee CC
BE	4	D.S. BROWN SS EXTR. 1 2 3/4		-Do-	d dd DD
C	4	R 1/2 x 8 3/8	1 0	SEE DET THIS SHT.	f ff FF
D	2	R 1/2 x 9 5/8	0 10	-Do-	g gg GG
F	4	R 1/2 x 12	1 0	-Do-	h hh HH
G	2	R 1/2 x 10	1 0	-Do-	k kk KK
H	4	L 2 1/2 x 2 1/2 x 1/4	0 9	-Do-	m mm MM
K	1	R 1/2 x 20	1 9	-Do-	n nn NN
M	1	R 1/2 x 16	1 9	-Do-	p pp PP
NR	4	R 1/2 x 13 3/4	2 4 3/4	-Do-	s ss SS
P	8	BAR 2 x 1/2	2 4 3/4	-Do-	t tt TT
SM	4	R 1/2 x 6 1/2 w/ 1/4" RR.N.	1 8	-Do-	v vv VV
TR	4	R 1/2 x 6 1/2	1 8	-Do-	w ww WW
V	8	R 1/2 x 6 1/2	1 8	-Do-	y yy YY
AA	1	R 1/2 x 6	0 6	-Do-	
AB	8	BAR 2 x 1/2	1 8 1/2	-Do-	
AC	8	R 1/2 x 13 3/4	1 8 1/2	-Do-	
AD	8	R 1/2 x 6	1 8	-Do-	
ah	96	3/4" STUD	0 0	-Do-	
ak	96	3/4" STUD	0 0	-Do-	
am	100	3/4" STUD	0 0	-Do-	
an	100	3/4" STUD	0 0	-Do-	
ba	112	3/4" A.H. BLT. W/H.N. & F.W.	0 0	ASTM-A305	
bb	96	3/4" STUD	0 0	-Do-	
bc	96	3/4" A.H. BLT. W/H.N. & F.W.	0 12 1/4	ASTM-A307	
bd	4	D.S. BROWN SS-300 SEAL	3 6	POLYCHLOROPRENE	
A-1	96	ANCHORS			
	96	1/2" ALL THD. ROD	0 7		
	192	1/2" HEX. NUT	- -		
	192	1/2" FLAT WASH.	- -		
A-2	176	ANCHORS			
	176	1/2" ALL THD. ROD	0 6		
	352	1/2" HEX. NUT	- -		
	352	1/2" FLAT WASH.	- -		
P-1	44	ANCHOR PLATES			
	44	R 1/2 x 12	1 0		
	176	3/4" STUD	0 6		



DETAIL OF R (aa)  
-ONE CUTS TWO-



DETAIL OF ANCHOR A-1 & A-2



DETAIL OF ABUT. ANCHOR R P-1

WORK THIS SHEET W/ SHT. 1 & 2A

**USF** UNITED STEEL FABRICATORS, INC.  
P.O. BOX 516  
SIDNEY, OHIO 45365  
TELEPHONE (613) 492-9184

PROJECT:	85-1090 RUTLAND COUNTY	INFO. NO.:	85-4629
	EXPANSION JOINT DETAILS	DRAWN:	C. HAYDEN
	U.S. ROUTE 4 OVER OTTER CREEK	CHK'D:	J.R.
	RUTLAND COUNTY, VERMONT	APP:	
		REF:	
REV. SHEET NO.	REVISIONS	DATE BY	CONTRACTOR:
1	REV. PER SUP APPROVAL	5/16/85	EARTH CONTR. CO.
2	REV. PER APPROVAL	7/16/85	