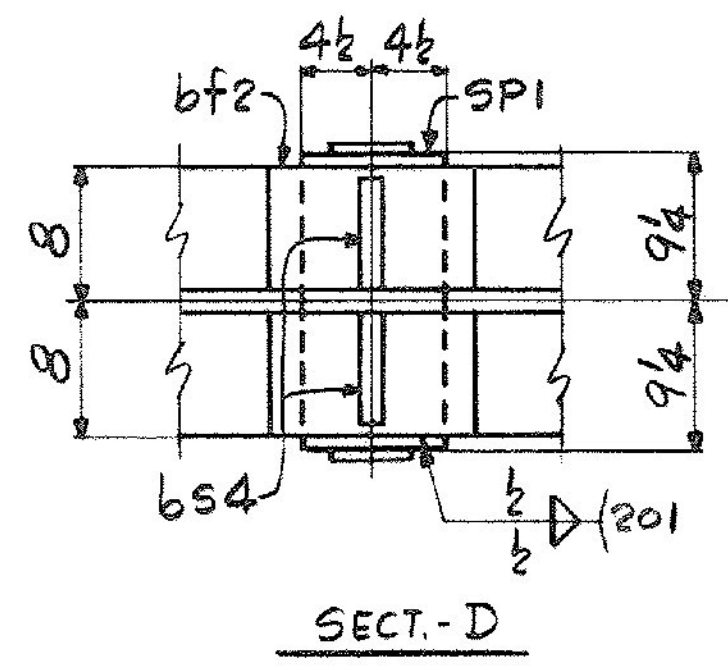
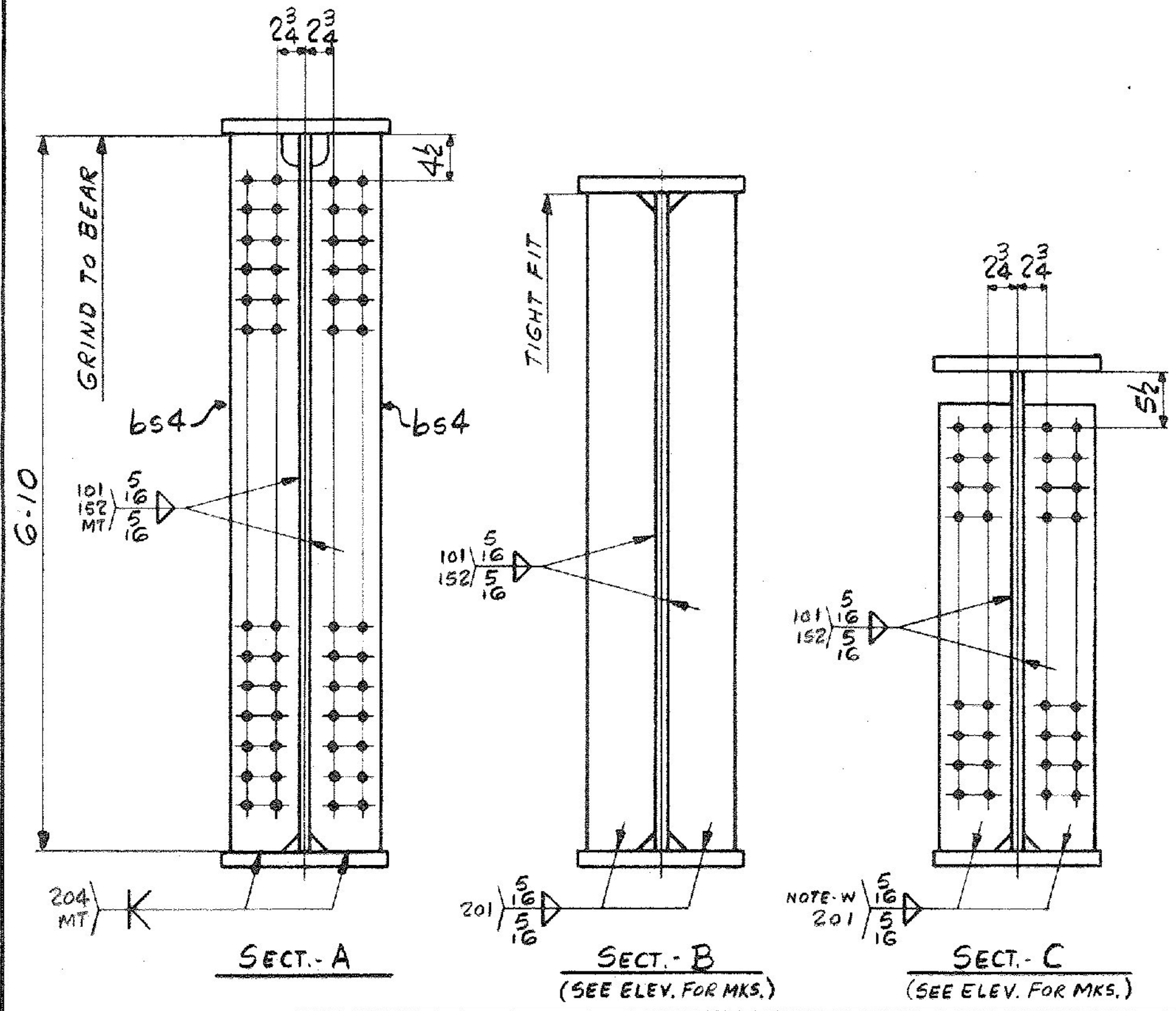
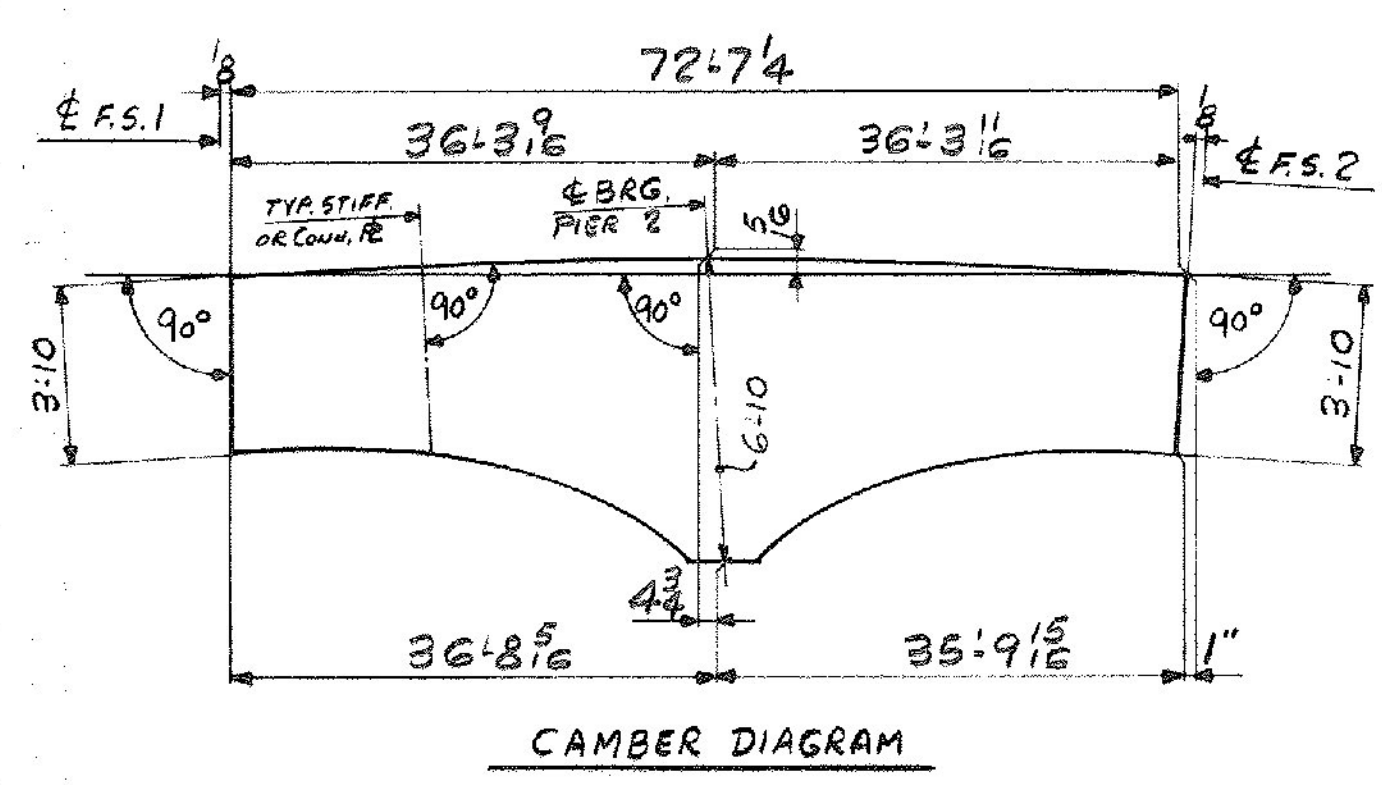


SHIP		BILL OF MATERIAL			JOB NO.	DRAWING NO.	REV.	
HG2B		GIRDER			4-7	52-13	△	
MARK	NO.	MARK	SHAPE	LENGTH	WT.	ITEM NO.	WT.	REMARKS
	1	wpl	PL 5/8 x 82	72 7/4	22 1/2 x 72 1/4	1/C	8675	CVN
	1	tf1	PL 1/4 x 16	72 7/4	10 1/2 x 72 1/4	1/T	4741	
	1	bf1	PL 1/4 x 16	35 10 1/8	10 3/8 x 35 10 1/8	1/N	2444	BENT
	1	bf2	PL 1/4 x 16	2 0 5/8	10 1/2 x 2 0 5/8	1/Q	138	
	1	bf3	PL 1/4 x 16	35 0 5/8	10 3/8 x 35 0 5/8	1/O	2385	BENT
	2	sp1	PL 1/2 x 42	1 7	10 3/8 x 1 7	2/A	226	
	2	sp2	PL 5/8 x 16	2 4	20 1/2 x 2 4	2/B	159	
	4	sp3	PL 5/8 x 7	2 4	20 1/2 x 2 4	2/C	139	CVN
	1	sp4	PL 3/8 x 16	1 1 1/2	20 1/2 x 1 1 1/2	2/D	24	
	1	sp5	PL 1/4 x 16	1 1 1/2	20 1/2 x 1 1 1/2	2/E	16	
	2	sf4	PL 1/2 x 7	6 3 3/8	10 1/2 x 6 3 3/8	2/O	261	1R, 1L
	2	sf9	PL 1/2 x 7	6 5 1/8	10 1/2 x 6 5 1/8	2/O	269	1R, 1L
	2	bs4	PL 3/8 x 7	6 10	10 1/2 x 6 10	2/G	285	MIE
	1	sf4	PL 1/2 x 7	3 7 1/2	10 1/2 x 3 7 1/2	2/J	44	
	1	sf10	PL 1/2 x 7	3 11 1/2	10 1/2 x 3 11 1/2	2/L	47	
	1	sf9	PL 1/2 x 7	3 11 1/2	10 1/2 x 3 11 1/2	2/L	47	
	1	sf3	PL 1/2 x 7	3 7 1/2	10 1/2 x 3 7 1/2	2/J	43	
							20,143 #	
	1	sp1	SOLE PLATE					DET. DWG. 51-1 (Job No. 4-11)



ONE - GIRDER - HG2B
 FOR GIRDER STANDARD DETAILS SEE DWG. 52-3
 FOR WEB CUTTING SK. & FLG. PLASSY SEE DWG. 52-2
 FOR SHOP ASSEMBLY DIAGRAM SEE DWG. 52-1



SHOP NOTE - W
 WELD SIZE SHOWN SHALL BE INCREASED BY THE AMOUNT OF GAP, IF ANY, BETWEEN EDGE OF CONN. PL. AND TOP OF BOTTOM FLANGE PL. (MAX. GAP = 1/8").

IT NO. 506.91 BR. NO. 4 PROJ. NO. F020-1(10)

FOR APPROVAL **FOR FILES & FIELD**

STEEL: ASTM A36 A572 GR1 A572 GR2 Unless Noted

WELDING ELECTRODE: E70 She Welding Proc. None

SHOP CONN: Bolted Welded None

FIELD CONN: Bolted Welded None

HOLES: 13/16 15/16 Unless Noted None

PAINT: None Shopcoat Galv. After Fab. As Noted

SPECIAL PAINT: None Blast Clean None SSPC-SP6

GIRDER - HG2B

APPROVED: 5-17-84
 PRINT DIST: 7-11-84 APP. 7-11-84
 B 6-27-84 FAB. 6-27-84
 NR F&F

Bancroft & Martin Inc
 South Portland, Maine 04106

JOB: T.H. 22 OVER U.S. 4 E.B. & W.B. RUTLAND, VERMONT

CUSTOMER: M&J CONSTRUCTION CO.
 DESIGNER: STATE OF VERMONT, AGENCY OF TRANSP.

REV. △
 CHECKED 4/2/84 GJK
 DRAWN 3-6-84 ELC

ORDER NO. 4-7 DRAWING NO. 52-13