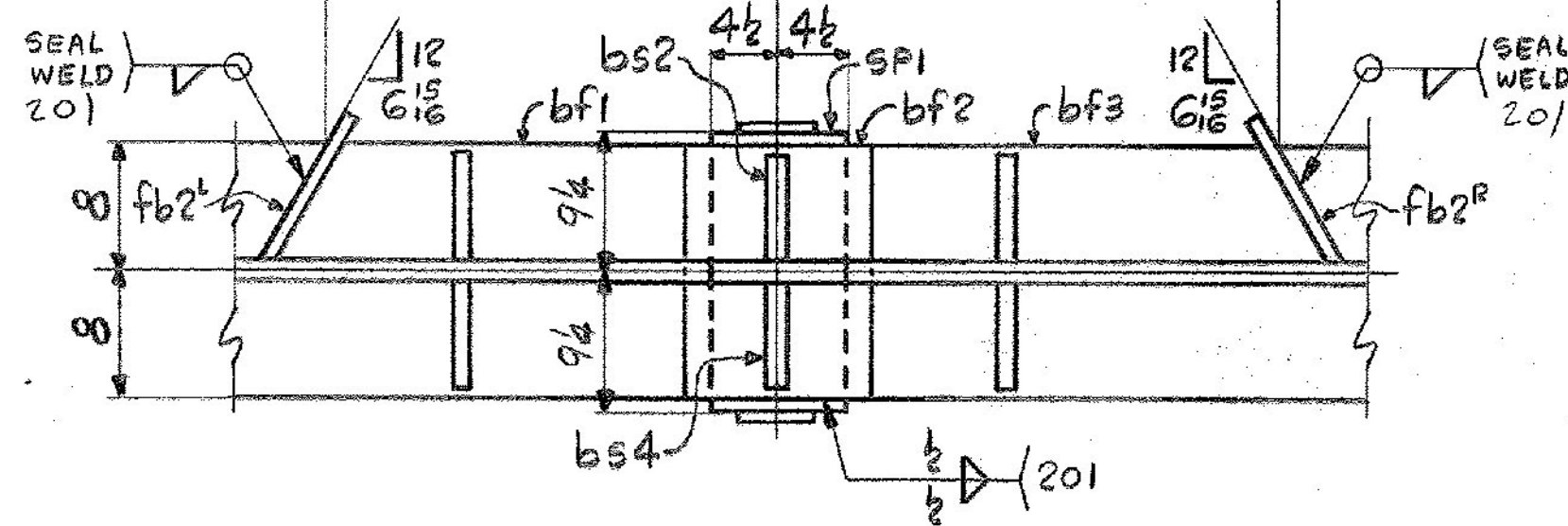
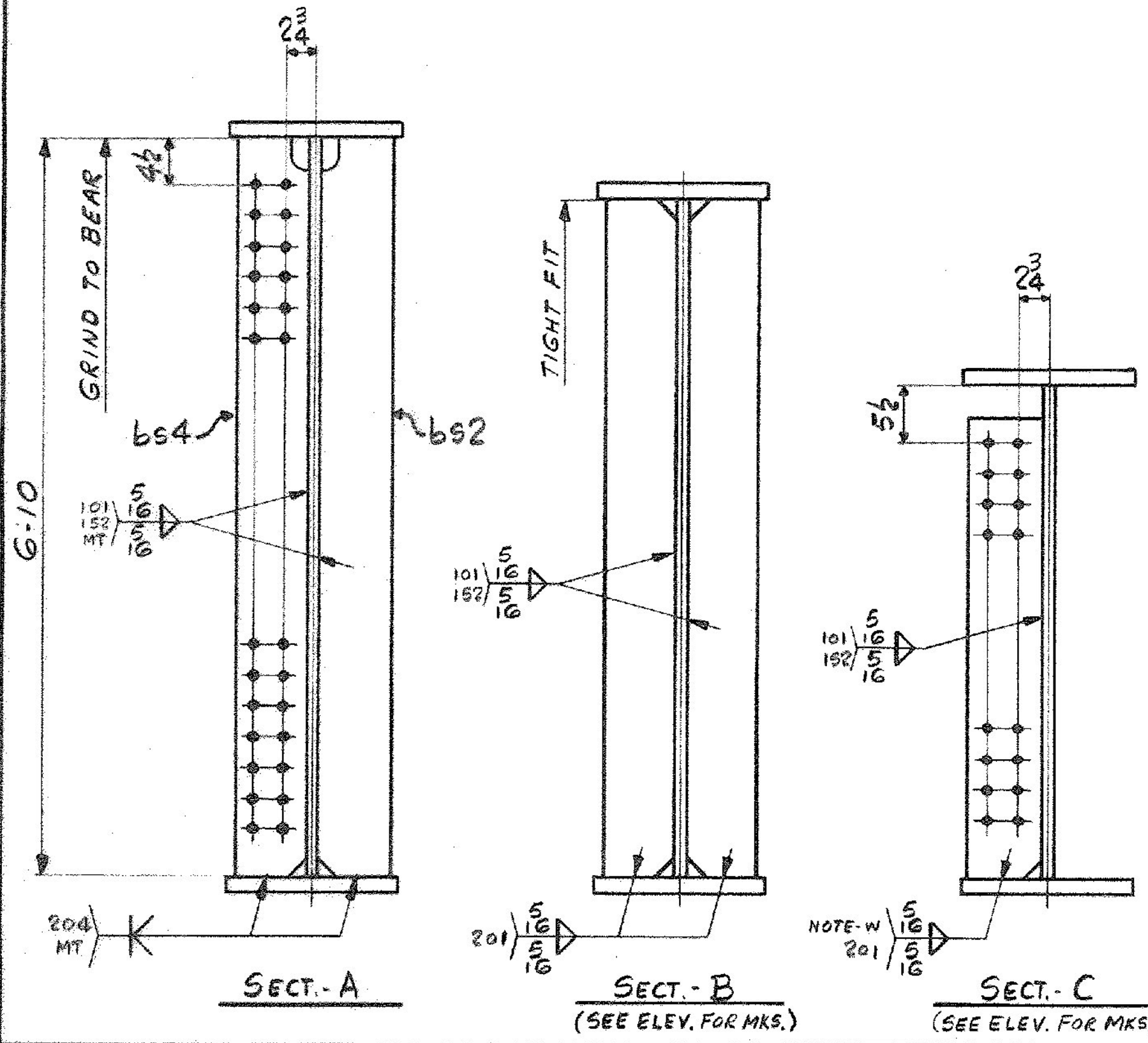


SHIP		BILL OF MATERIAL				JOB NO.	DRAWING NO.	REV.
HG1B						4-7	52-12	△
MARK	NO.	MARK	SHAPE	LENGTH	WT.	ITEM NO.	WT.	REMARKS
			GIRDER					
1	wpl		PL 5/8 x 82	72 7/8	22 1/2 x 72 1/8	1/C	8675	CVN
1	tf1		PL 1/4 x 16	72 7/8	1/8 x 72 1/8	1/T	4941	
1	bf1		PL 1/4 x 16	35 11	1/8 x 36 1/2	1/N	2444	BENT
1	bf2		PL 1/4 x 16	2 0 5/8	1/8 x 0	1/Q	138	
1	bf3		PL 1/4 x 16	35 0 5/8	1/8 x 35 5/8	1/O	2385	BENT
2	sp1		PL 1/2 x 42	1 7	1/2 x 42	2/A	226	
2	sp2		PL 1/2 x 16	2 4	1/2 x 16	2/B	159	
4	sp3		PL 5/8 x 7	2 4	5/8 x 7	2/C	139	CVN
1	sp4		PL 3/8 x 16	1 1 3/4	3/8 x 16	2/D	24	
1	sp5		PL 1/4 x 16	1 1 3/4	1/4 x 16	2/E	16	
2	si 1/4		PL 3/8 x 7	6 3 3/8	3/8 x 7	2/O	261	1R, 1L
2	si 1/4		PL 3/8 x 7	6 5 1/8	3/8 x 7	2/O	269	1R, 1L
1	bs2		PL 3/8 x 7	6 10	3/8 x 7	2/G	142	MIE
1	bs4		PL 3/8 x 7	6 10	3/8 x 7	2/G	142	MIE
1	sf4		PL 1/2 x 7	3 7 1/8	1/2 x 7	2/J	44	
1	sf10		PL 1/2 x 7	3 11 3/8	1/2 x 7	2/L	47	
2	fb2		PL 1/4 x 3/4	0 10 1/8	CRAPS	2/P	5 1R, 1L	
							20,057 #	
1	SP1		SOLE PLATE					DET. ON DWG. 51-1 (JOB NO. 4-11)



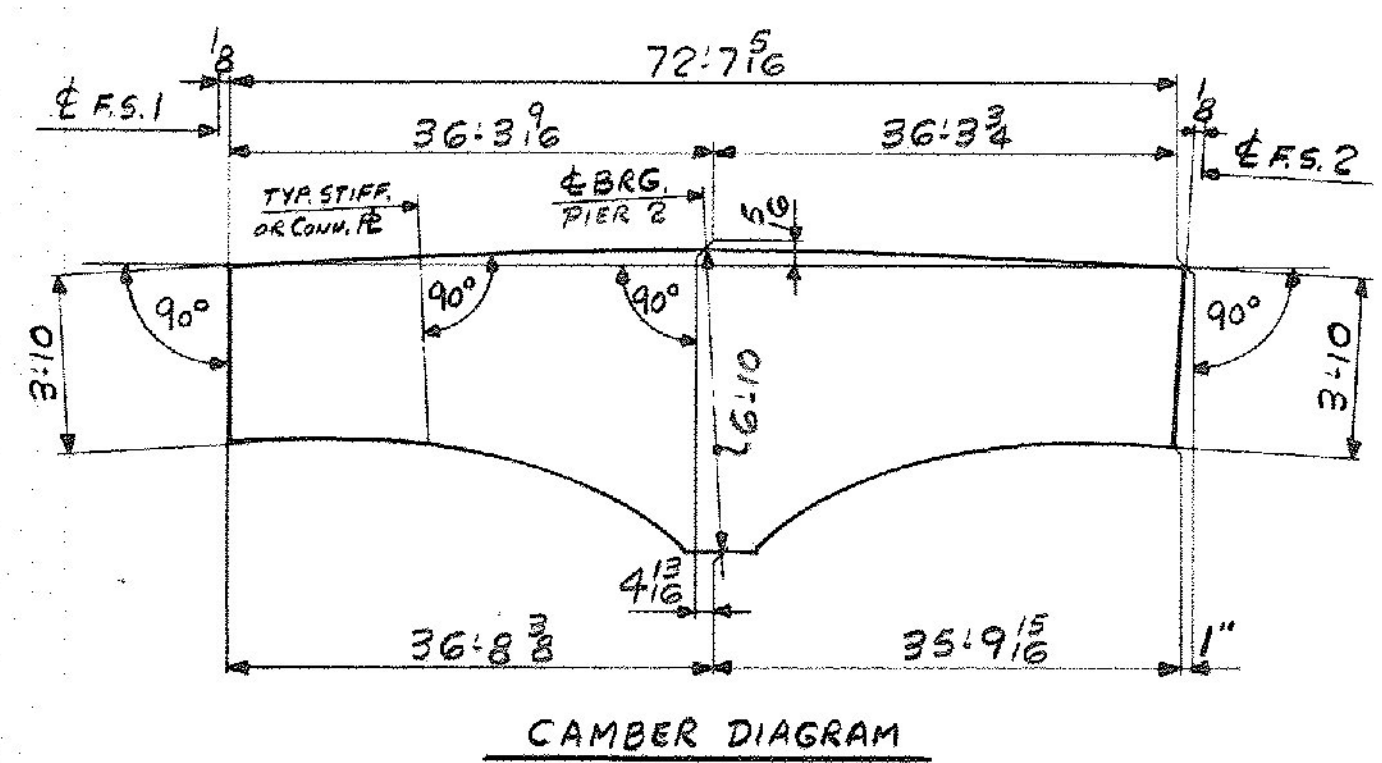
SECTION D-D



DIM. (X)	
2'-6"	38'-6"
6'-0"	42'-6"
10'-0"	46'-6"
14'-0"	50'-6"
18'-0"	54'-6"
22'-0"	58'-6"
26'-0"	62'-6"
30'-0"	66'-6"
34'-0"	70'-6"

SHOP NOTE - W
WELD SIZE SHOWN SHALL BE INCREASED BY THE AMOUNT OF GAP, IF ANY, BETWEEN EDGE OF CONN. PL. AND TOP OF BOTTOM FLANGE PL. (MAX. GAP = 1/8").

ONE GIRDER - HG1B
FOR GIRDER STANDARD DETAILS SEE DWG. 52-3
FOR WEB PL. CUTTING SK. & FLG. PL. ASSY SEE DWG. 52-2
FOR SHOP ASSEMBLY DIAGRAM SEE DWG. 52-1



CAMBER DIAGRAM

IT. NO. 506.91 BR. NO. 4 PROJ. NO. F020-1(10)

FOR APPROVAL **FOR FILES & FIELD**

STEEL: ASTM A36 A572 GR. A588 GR. Unless Noted

WELDING ELECTRODE: E70 See Welding Proc. None

SHOP CONN: Bolted Welded None

FIELD CONN: Bolted Welded None

HOLES: 13/16 15/16 Unless Noted None

PAINT: None Shopcoat Galv. After Fab. As Noted

SPECIAL PAINT: None Blast Clean SSPC-SP6

GIRDER - HG1B

APPROVED: 5-17-84
PRINT DIST. 7 4-11-84 APP. 8 6-21-84 FAB. NR F&F.

Bancroft & Martin Inc.
South Portland, Maine 04106

JOB: T.H. 22 OVER U.S. 4 E.B. & W.B. RUTLAND, VERMONT

CUSTOMER: M & J CONSTRUCTION CO.
DESIGNER: STATE OF VERMONT, AGENCY OF TRANSP.

ORDER NO. JOB NO. DRAWING NO. REV.
4-7 52-12 △

CHECKED 4/2/84 GK
DRAWN 3-6-84 ELC