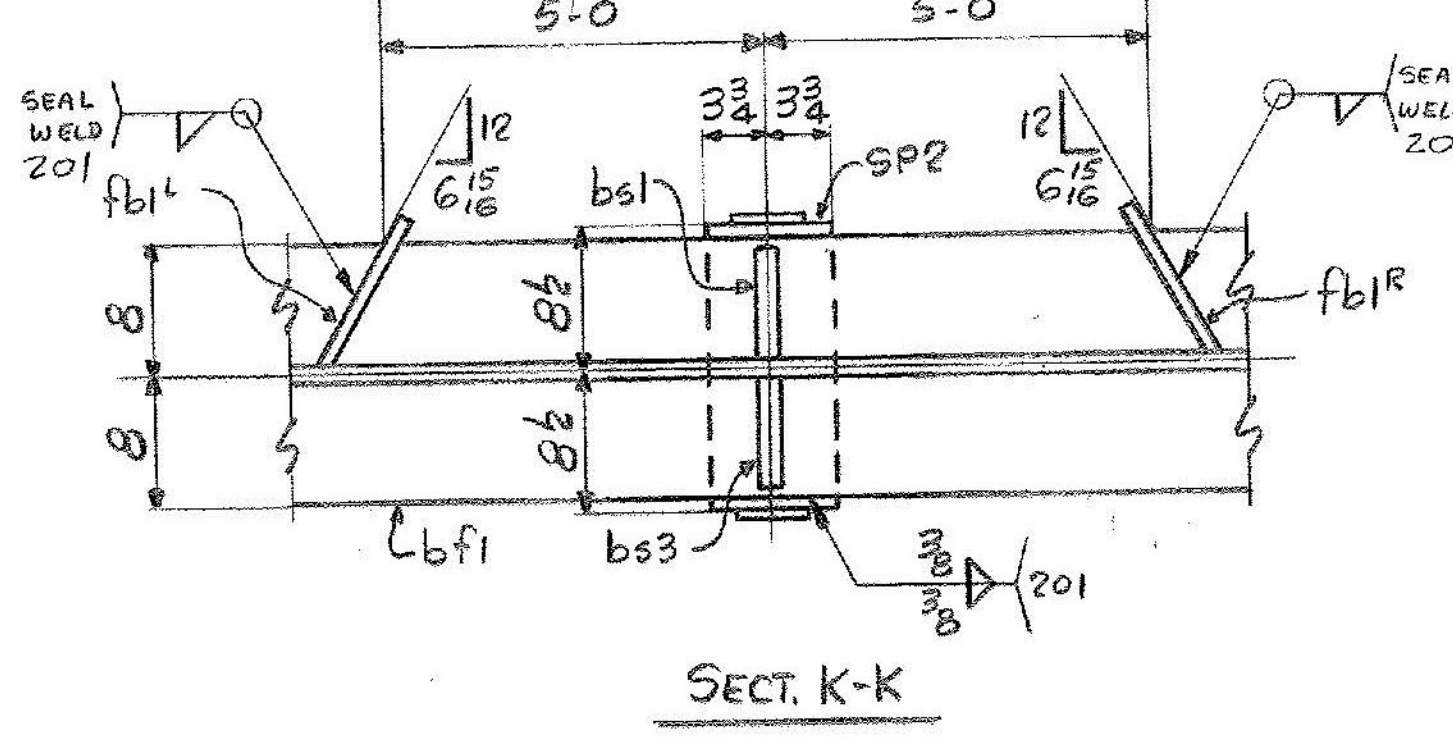


SEE CAMBER DIAGRAM

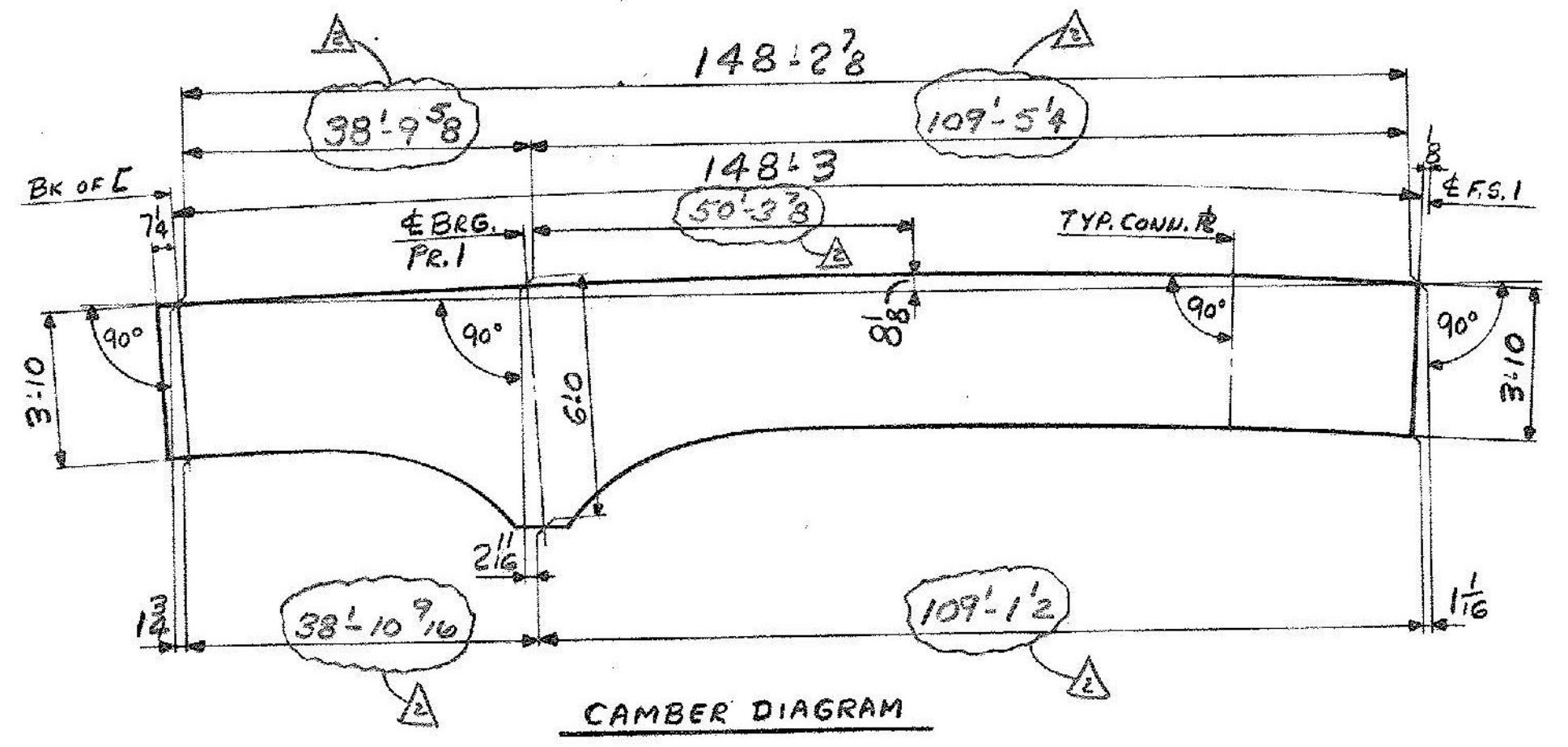
SEE FIELD SPL. DETAIL DWG. 52-3

SEE CAMBER DIAGRAM

ONE GIRDER - HG1A
 FOR WEB & CUTTING SK. & FLG. ASSY SEE DWG. 52-1
 FOR SHOP ASSEMBLY DIAGRAM SEE DWG. 52-1
 FOR GIRDER STANDARD DETAILS SEE DWG. 52-3
 WORK THIS DWG. WITH DWG. 52-5



SECT. K-K



CAMBER DIAGRAM

EXT DIMS
 CHANGE FLG SPL LOCATIONS

DIM. (X)

2'-3	54'-3	102'-3
6'-3	58'-3	106'-3
10'-3	62'-3	110'-3
14'-3	66'-3	114'-3
18'-3	70'-3	118'-3
22'-3	74'-3	122'-3
26'-3	78'-3	126'-3
30'-3	82'-3	130'-3
34'-3	86'-3	134'-3
38'-3	90'-3	138'-3
42'-3	94'-3	142'-3
46'-3	98'-3	146'-3
50'-3		

IT. NO. 506.91	BR. NO. 4	PROJ. NO. F020-1(10)
FOR APPROVAL		FOR FILES & FIELD
GIRDER-HG1A		
APPROVED: 5-17-84		
PRINT DIST.		
7	4-11-84	APP.
8	6-27-84	FAB.
NR		F&F.
7	10-9-84	APP.
8	10-4-84	FAB.
8	10-23-84	FAB.
7	10-23-84	APP.
10-22-84	JCM	
10-3-84	JCM	
4/2/84	GK	
3-1-84	ELC	
CUSTOMER: M & J CONSTRUCTION Co.		
DESIGNER: STATE OF VERMONT, AGENCY OF TRANSP.		
ORDER NO.	JOB NO.	DRAWING NO. REV.
	4-7	52-4

Bancroft & Martin Inc.
 South Portland, Maine 04106
 JOB: T.H. 22 OVER U.S. 4 E.B. & W.B.
 RUTLAND, VERMONT