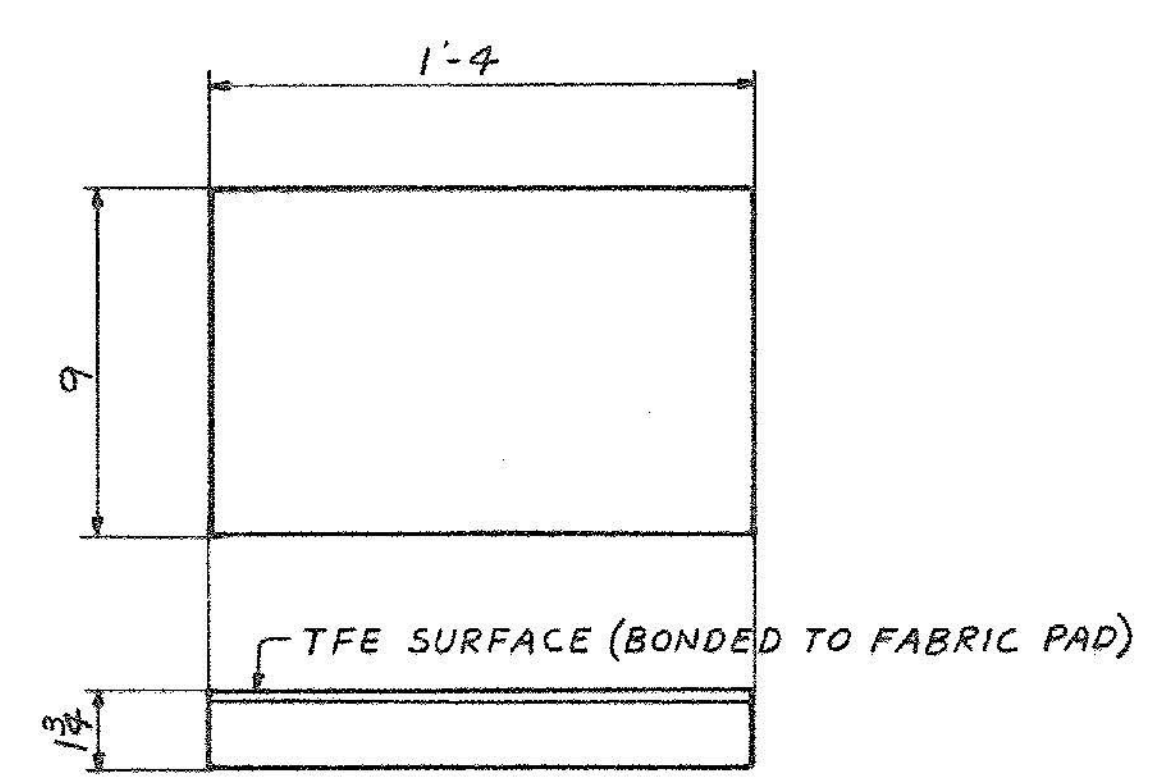
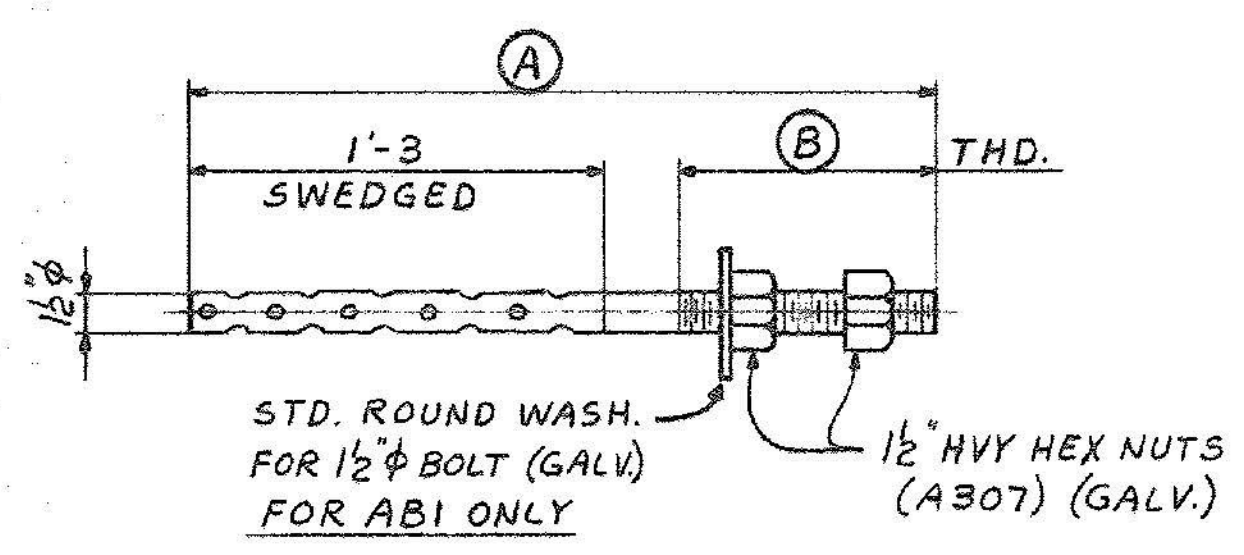


p2~STAINLESS STEEL SHT.  
ASTM A240, TYPE 304,  
WELDED TO SOLE PLATE  
EXPOSED SURFACE TO  
HAVE SURFACE ROUGHNESS  
OF 10 MICROINCHES RMS, MAX.

G~SOLE PLATES~MK.SPI  
(SEE NOTE 2 & NOTE 3)  
G~SOLE PLATES~MK.SP2



12~PREFORMED FABRIC PADS~MK.FPI  
(AS PER SECT. 731.01 & 731.10  
OF VERMONT STD. SPECS.)



ANCHOR BOLTS  
(GALV. PER ASTM A153 AFTER FAB.)

MARK	NO REQD	(A)	(B)
AB1	24	2'-0	8
AB2	48	2'-3	11

SHIP		BILL OF MATERIAL				JOB NO.	DRAWING NO.	REV.
						4-48	51-1	△
MARK	NO.	MARK	SHAPE	LENGTH	WTF.	ITEM NO.	QTY	REMARKS
SP1	6		SOLE PLATES					
	6	P1	R 18 X 14	2	1		670	F15 GALV.
	6	P2	SHT. 14GA X 13 1/2	1	5		29	F15 STAINLESS STL A240 TYPE 304
			PREFORMED FABRIC PADS					
FPI	12		PAD 1 1/2 X 9	1	4			TFE SURFACE 1-SIDE
			ANCHOR BOLTS					
AB1	24		ROD 1 1/2"	2	0		289	GALV.
AB2	48		ROD 1 1/2"	2	3		449	
	144		1 1/2" HVY HEX NUTS				189	A307
	24		STD. ROUND WASHERS				9	
SP2	6		SOLE PLATES					
	6	P3	R 14 X 14	2	1		144	F15 GALV.
	6	P2	SHT. 14GA X 13 1/2	1	5		29	F15 STAINLESS STL A240 TYPE 304

IT. NO. 506.99 BR. NO. 6 PROJ. NO. F020-1(10)

**FOR APPROVAL** | **FOR FILES & FIELD**

STEEL: ASTM.  A36  A572 GR.  A588 GR.  Unless Noted

WELDING ELECTRODE:  E70  See Welding Proc.  None

SHOP CONN:  Bolted  Welded  None

FIELD CONN:  Bolted  Welded  None

HOLES:  13/16  1 1/8  AS NOTED  Unless Noted  None

PAINT:  None  Shopcoat  Galv. After Fab.  As Noted

SPECIAL PAINT: NONE

SPECIAL CLEANING:  Blast Clean  None  SSPC-SP6

- NOTES:
1. ✓ DENOTES MAXIMUM SURFACE ROUGHNESS ALLOWABLE (IN MICRO INCHES), AS DEFINED IN A.S.A. B46.1 - SURFACE ROUGHNESS, WAVINESS & LAY, PART I.
  2. SOLE PLATE - SPI SHALL BE GALVANIZED AS PER SPECIAL PROVISION 731.06 (A36 STL ONLY, NOT STAINLESS).
  3. PRIOR TO GALVANIZING, ALL CORNERS AND EDGES OF STEEL PLATES (SOLE R - SPI) SHALL BE GROUND TO A 1/8 INCH RADIUS.

BRIDGE SHOES (EASTBOUND BRIDGE)

APPROVED: 3-19-84

PRINT DIST.

7 11-14-84 APP.

8 3-20-84 FAB.

NK - F&F.

7 3-1-85 APP

ORIG 3-26-86 VAT

**Bancroft & Martin Inc.**  
South Portland, Maine 04106

JOB: U.S.4 OVER OTTER CREEK  
RUTLAND, VERMONT

CUSTOMER: MASKELL FENCE CO.

DESIGNER: STATE OF VERMONT AGENCY OF TRANS.

REV. △

CHECKED 12-18-84 RW

DRAWN 11-14-84 RLA

ORDER NO. 4-48

JOB NO. 51-1

DRAWING NO. 51-1

REV. △

ALL CONNECTIONS DETAILED ON THIS DRAWING REPRESENT BANCROFT & MARTIN INC. STANDARDS. IN APPROVING THIS DRAWING FOR FABRICATION, THE ARCHITECT AND/OR ENGINEER ASSUMES THE RESPONSIBILITY FOR THE STRUCTURAL INTEGRITY OF ALL CONNECTIONS SHOWN.