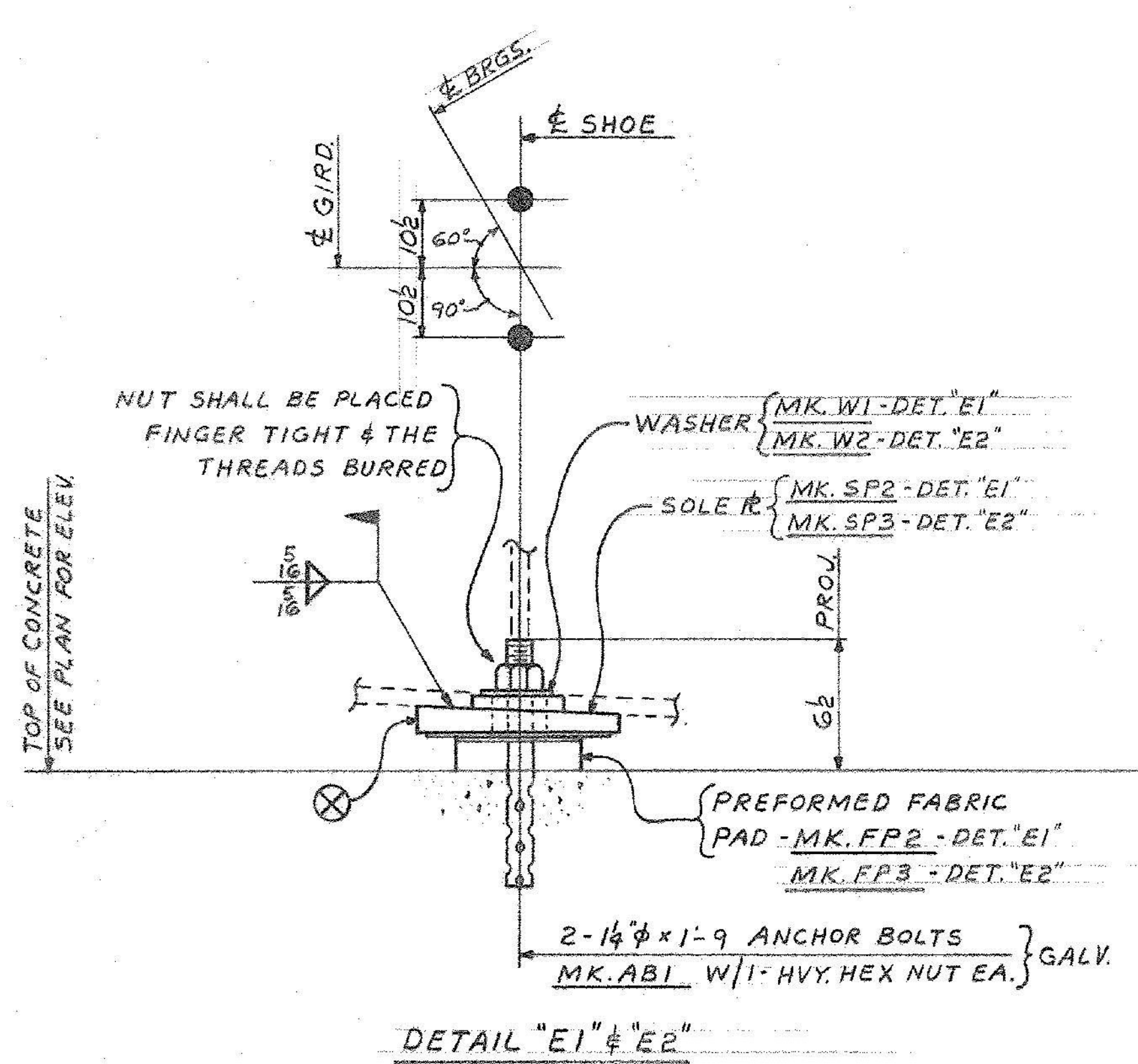
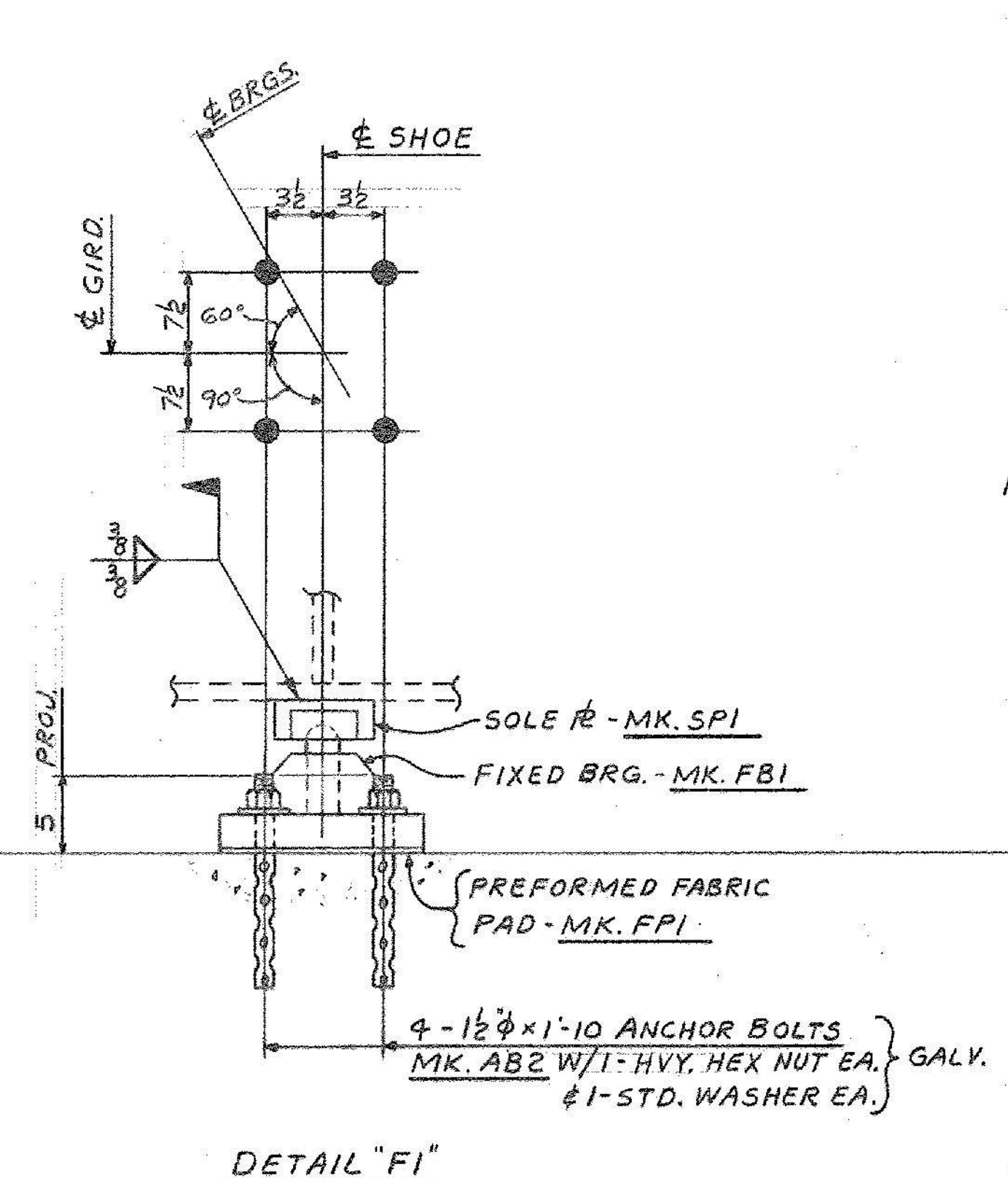


WESTBOUND ANCHOR BOLT PLAN

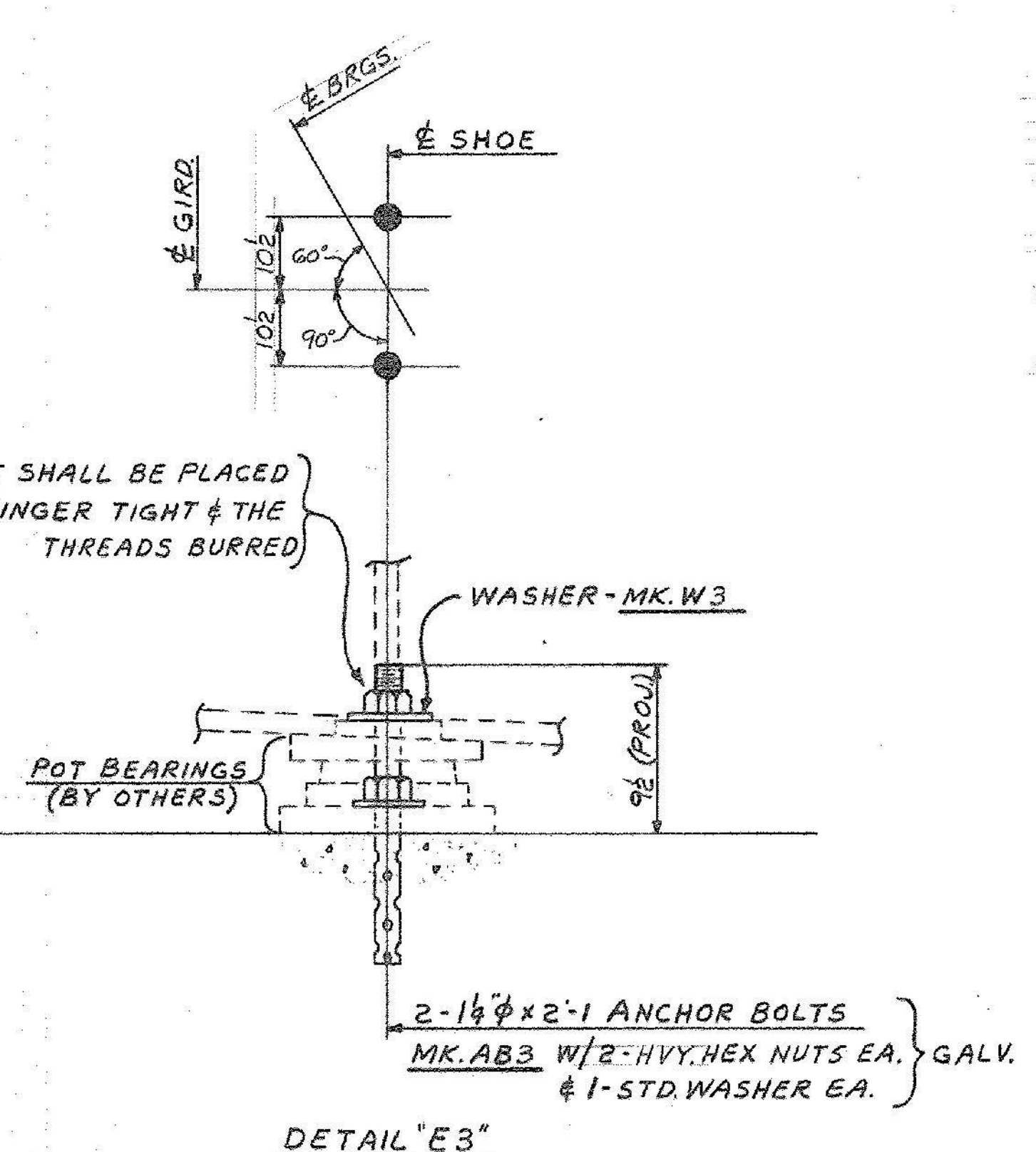
PLACE SOLE PLATES WITH CLIPPED CORNER AS SHOWN HERE (TYP. @ ABUTMENTS)



DETAIL "E1" & "E2"



DETAIL "F1"



DETAIL "E3"

- NOTES:**
1. ALL DIMENSIONS ARE TAKEN IN A HORIZONTAL PLANE.
 2. ALL DIMENSIONS MUST BE STRICTLY ADHERED TO, OTHERWISE STEEL WILL NOT FIT. IN CASE OF ERROR, NOTIFY BANCROFT & MARTIN INC. AT ONCE.
 3. ANCHOR BOLTS ARE FURNISHED BY BANCROFT & MARTIN INC. AND SET BY OTHERS.
 4. SOLE PLATES TO BE POSITIONED AND WELDED IN THE FIELD BEFORE THE DECK POUR.
 5. THICKER EDGE OF BEV. SOLE PLATE IS MARKED: ⊗

IT. NO. 506.99	BR. NO. 5	PROJ. NO. F-EGC-F-020-1(10)
FOR APPROVAL		FOR FILES & FIELD
ANCHOR BOLT PLAN (WESTBOUND)		
APPROVED: 2-1-85	Bancroft & Martin Inc. South Portland, Maine 04106 JOB: U.S. RTE. & W.B. OVER DORR DRIVE RUTLAND, VERMONT CUSTOMER: MASKELL FENCE CO. DESIGNER: STATE OF VERMONT AGENCY OF TRANS.	
7 12-27-84 APP.		
8 2-6-85 FAB.		
ORIG 2-19-86 VAT		
REV. Δ		
CHECKED 12-20-84 RW	ORDER NO.	JOB NO.
DRAWN 11-7-84 RLA	4-49	E-1