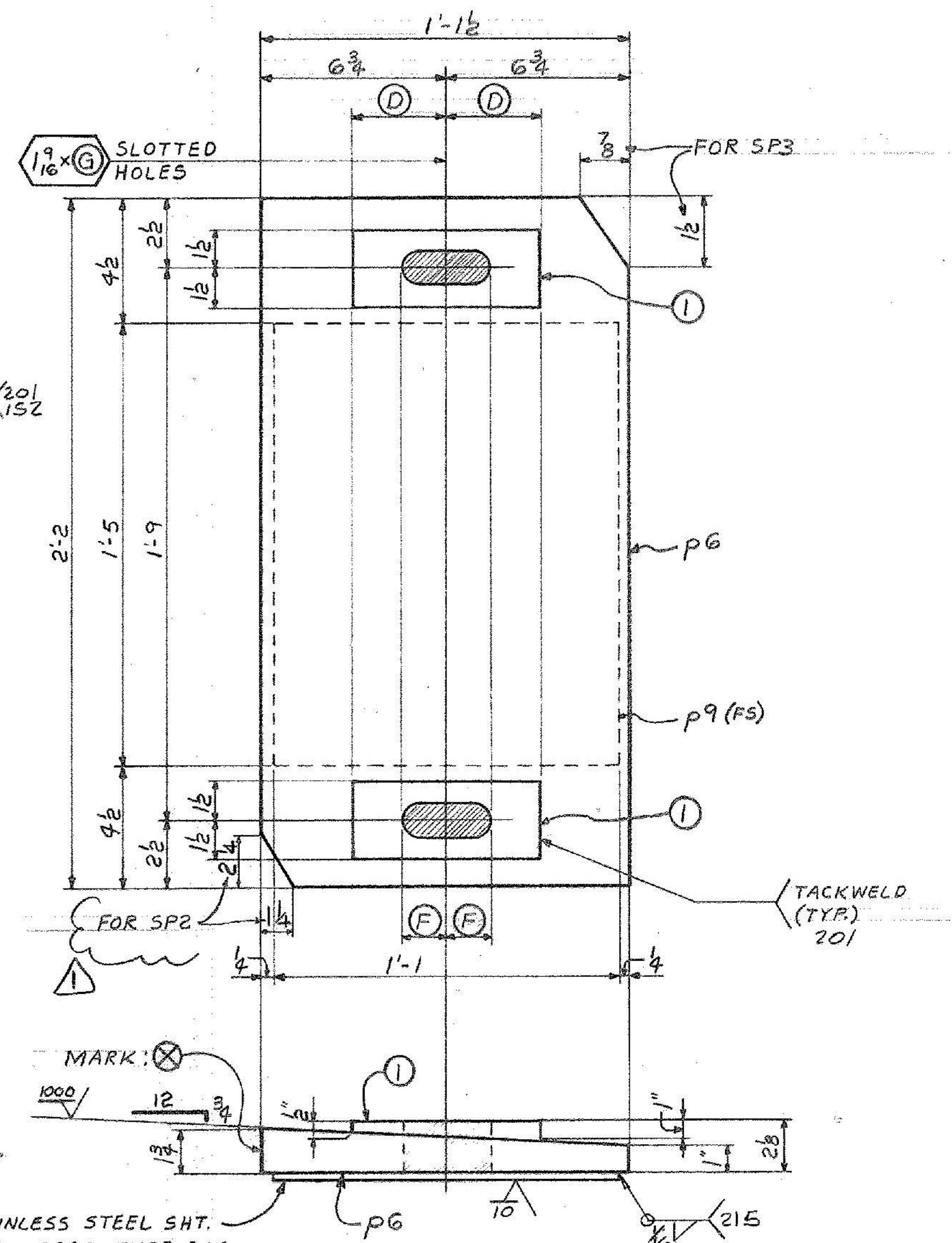
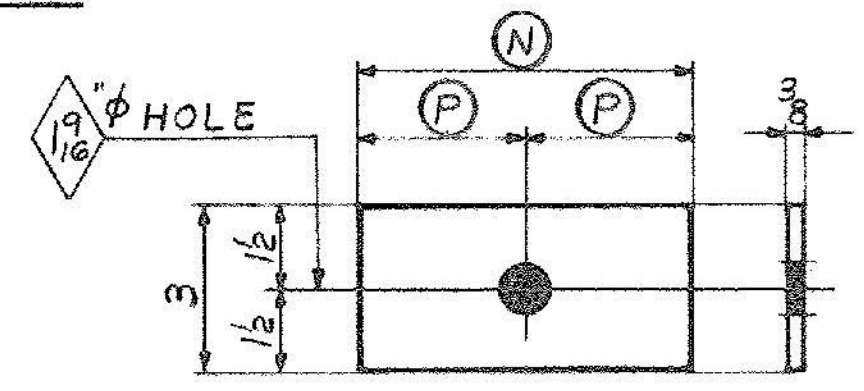


5 ~ FIXED BEARINGS - MK. FBI  
(MAT'L: ASTM A588)



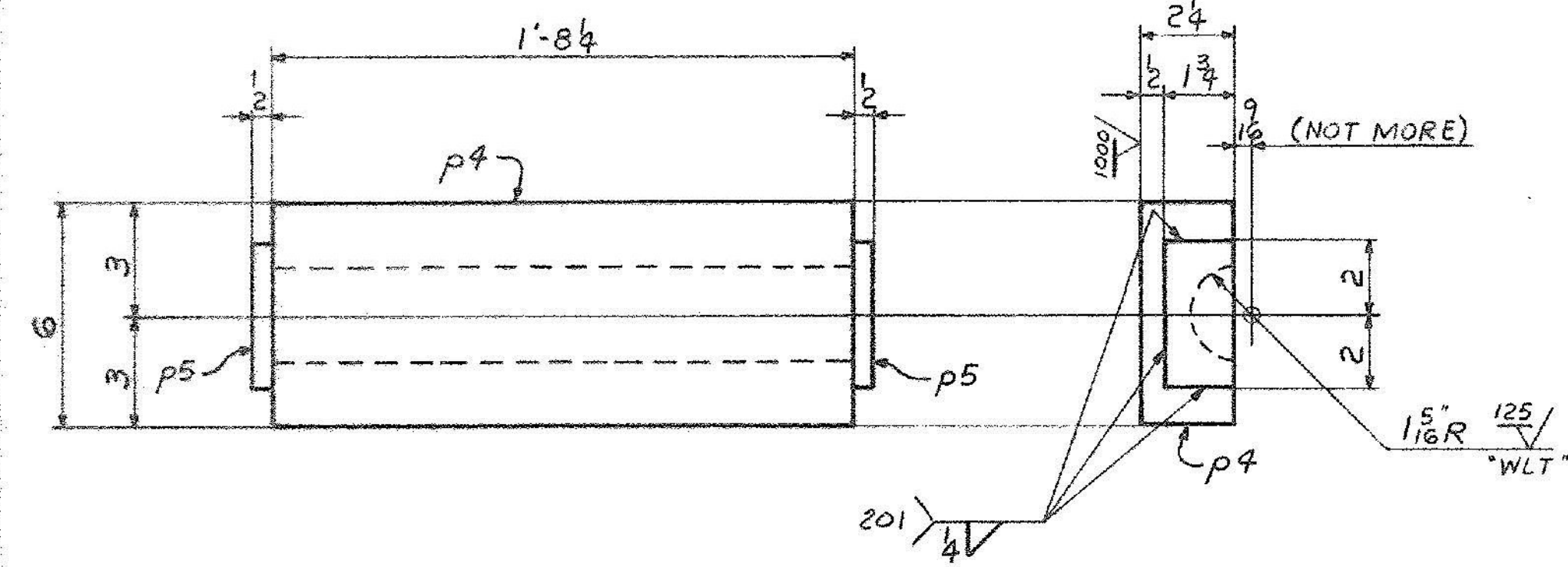
p9 - STAINLESS STEEL SHT.  
ASTM A240, TYPE 304,  
WELDED TO SOLE PLATE.  
EXPOSED SURFACE TO HAVE  
SURFACE ROUGHNESS OF 10  
MICROINCHES, RMS, MAX.

SOLE PLATES  
(SEE NOTE 2 & NOTE 3)

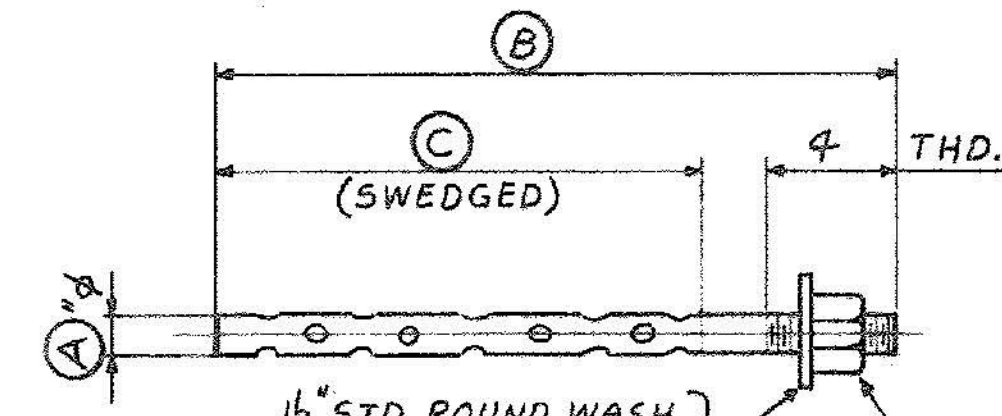


WASHERS  
(GALV.)

MARK	N <sup>o</sup> REQ'D	(N)	(P)
ABUT. 3	W1	10	8 1/2 4 1/4
ABUT. 4	W2	10	6 3
PIER 3	W3	10	6 1/4 3 1/8

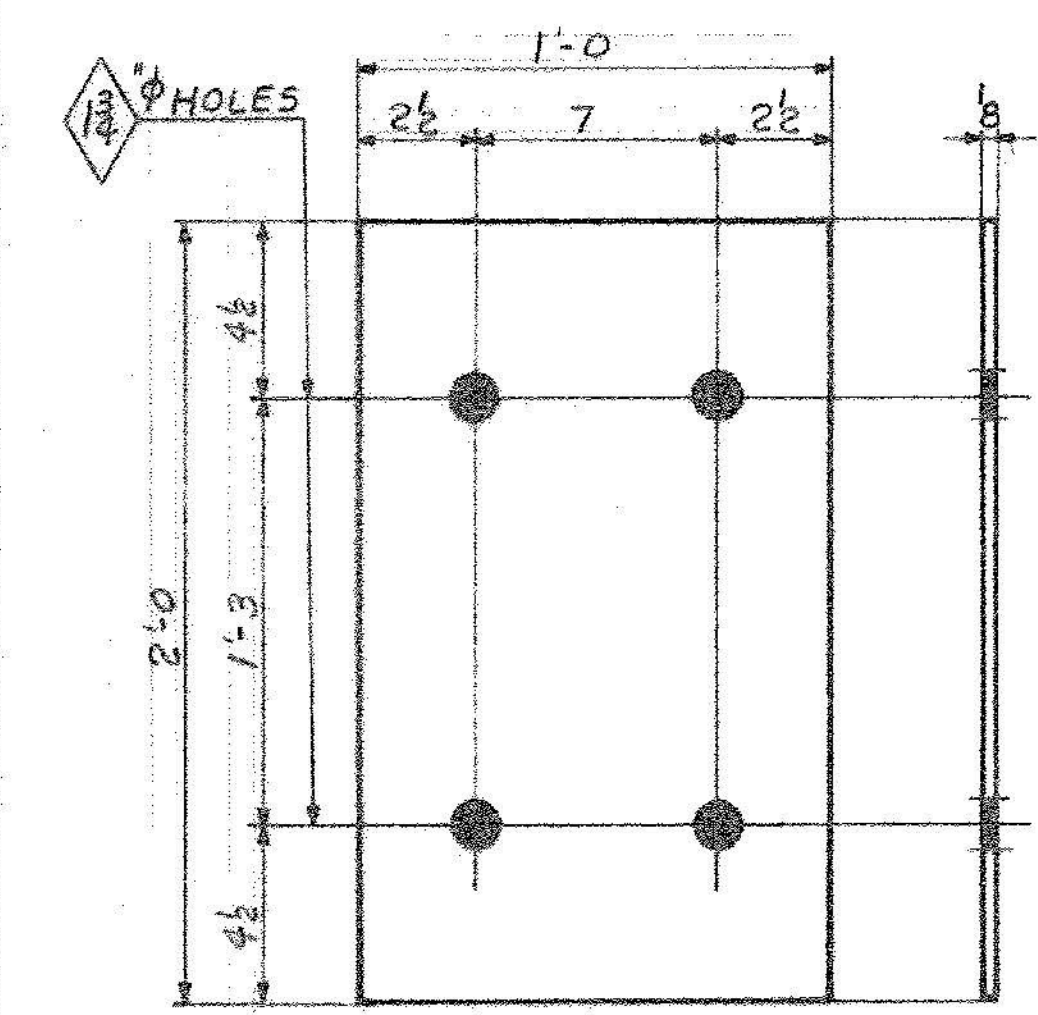


5 ~ SOLE PLATES - MK. SPI  
(MAT'L: ASTM A588)



ANCHOR BOLTS  
(GALV. PER ASTM A153 AFTER FAB.)

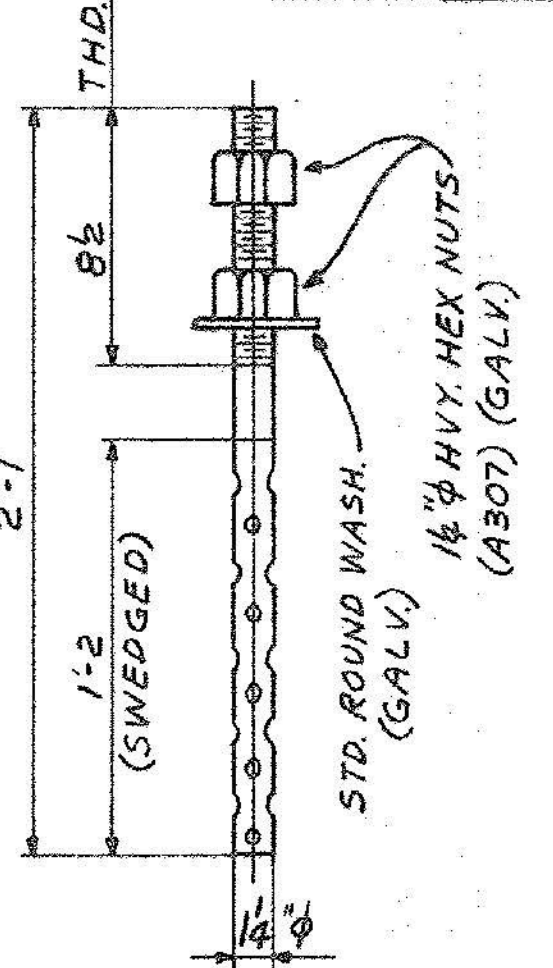
MARK	N <sup>o</sup> REQ'D	(A)	(B)	(C)
ABUT. 3 & 4	AB1	20	1 1/4	1'-9
PIER 4	AB2	20	1 1/2	1'-10



5 ~ PREFORMED FABRIC PADS - MK. FPI  
(AS PER SECT. 731.01 OF  
VERMONT STD. SPECS.)

10 ~ PREFORMED FABRIC PADS - MK. FP2  
(AS PER SECT. 731.01 & 731.10  
OF VERMONT STD. SPECS.)

10 ~ ANCHOR BOLTS - MK. AB3  
(GALV. PER ASTM A153 AFTER FAB.)



NOTES

- √ DENOTES MAXIMUM SURFACE ROUGHNESS ALLOWABLE (IN MICRO INCHES), AS DEFINED IN A.S.A. B46.1 - SURFACE ROUGHNESS, WAVINESS # LAY, PART I.
- SOLE PLATES SP2 & SP3 SHALL BE GALVANIZED AS PER SPECIAL PROVISION 731.06 (A36 STEEL ONLY, NOT STAINLESS STEEL.)
- PRIOR TO GALVANIZING, ALL CORNERS AND EDGES OF STEEL PLATES SHALL BE GROUND TO A 1/16" RADIUS.

SHIP		BILL OF MATERIAL				JOB NO.	DRAWING NO.	REV.
						4-50	51-1	Λ
MARK	NO.	MARK	SHAPE	LENGTH	WT.	ITEM NO.	WT.	REMARKS
FBI	5		FIXED BEARINGS					
	5	p1	R 2x12	2 0	1.480	B 317	F25	A588
	5	p2	R 2x5	1 8	0.2755	C 284	F2E	
	10	p3	R 1x3 1/2	0 10	0.4816	D 99	F1E	
SPI	5		SOLE PLATES					
	5	p4	R 2 1/2 x 6	1 8 1/4	1.8225	E 388	F1S	A588
	10	p5	R 1/2 x 1 3/4	0 4	0.1415	F 10		
SP2	5		SOLE PLATES					
	5	p6	R 1 1/2 x 13 1/2	2 2	1.8225	G 871	F1S	GALV.
	10	p7	R 1" x 3	0 9 1/2	0.1415	H 81		GALV.
	5	p9	SHT. 1/4 GA. X 13	1 5	0.1415	I 24	F1S STAINLESS STL. A240 TYPE 304	
SP3	5		SOLE PLATES					
	5	p6	R 1 1/2 x 13 1/2	2 2	1.8225	J 871	F1S	GALV.
	10	p8	R 1" x 3	0 7	0.1415	K 60		GALV.
	5	p9	SHT. 1/4 GA. X 13	1 5	0.1415	L 24	F1S STAINLESS STL. A240 TYPE 304	
			WASHERS					
	10		R 3/8 x 3	0 8 1/2	0.1415	M 27	GALV.	
	10		R 3/8 x 3	0 6	0.1415	N 19		
	10		R 3/8 x 3	0 6 1/4	0.1415	O 20		
			PREFORMED FABRIC PADS					
	5		PAD 8 x 12	2 0	0.1415	P 1		
	10		PAD 1 1/2 x 9	1 4	0.1415	Q 1		TFE SURFACE 1-SIDE
			ANCHOR BOLTS					
	20		ROD 1/4" φ	1 9	0.1415	R 146	GALV.	
	20		1/4" HVY. HEX NUT		0.1415	S 16	GALV. A307	
	20		ROD 1/2" φ	1 10	0.1415	T 220	GALV.	
	20		1/2" HVY. HEX NUT		0.1415	U 26	A307	
	20		STD. WASH. FOR 1/2" φ BOLT		0.1415	V 8		
	10		ROD 1/4" φ	2 1	0.1415	W 87	GALV.	
	20		1/4" HVY. HEX NUT		0.1415	X 16	A307	
	10		STD. WASH. FOR 1/4" φ BOLT		0.1415	Y 5		
								4,117 #

FOR APPROVAL | FOR FILES & FIELD

STEEL: ASTM  A36  A572 GRI  A588 GRI  Unless Noted

WELDING ELECTRODE:  E70  See Welding Proc.  None

SHOP CONN:  Bolted  Welded  None

FIELD CONN:  Bolted  Welded  None

HOLES:  13/16  15/16  As Noted  Unless Noted  None

PAINT:  None  Shopcoat  Galv. After Fab.  As Noted

SPECIAL PAINT: NONE

SPECIAL CLEANING:  Blast Clean  None  SSPC-SP6

BRIDGE SHOES (EASTBOUND BRIDGE)

APPROVED: 2-1-85

PRINT DIST.

7 12-27-84 APP.

8 2-7-85 FAB.

7 3-7-85 APP.

8 3-7-85 FAB.

DRUG 11-14-85 V/A

CUSTOMER: MASKELL FENCE CO.

DESIGNER: STATE OF VERMONT AGENCY OF TRANS.

ORDER NO. JOB NO. DRAWING NO. REV.

12-20-84 RW 4-50 51-1

11-13-84 RLA

ALL CONNECTIONS DETAILED ON THIS DRAWING REPRESENT BANCROFT & MARTIN INC. STANDARDS. IN APPROVING THIS DRAWING FOR FABRICATION, THE ARCHITECT AND/OR ENGINEER ASSUMES THE RESPONSIBILITY FOR THE STRUCTURAL INTEGRITY OF ALL CONNECTIONS SHOWN.