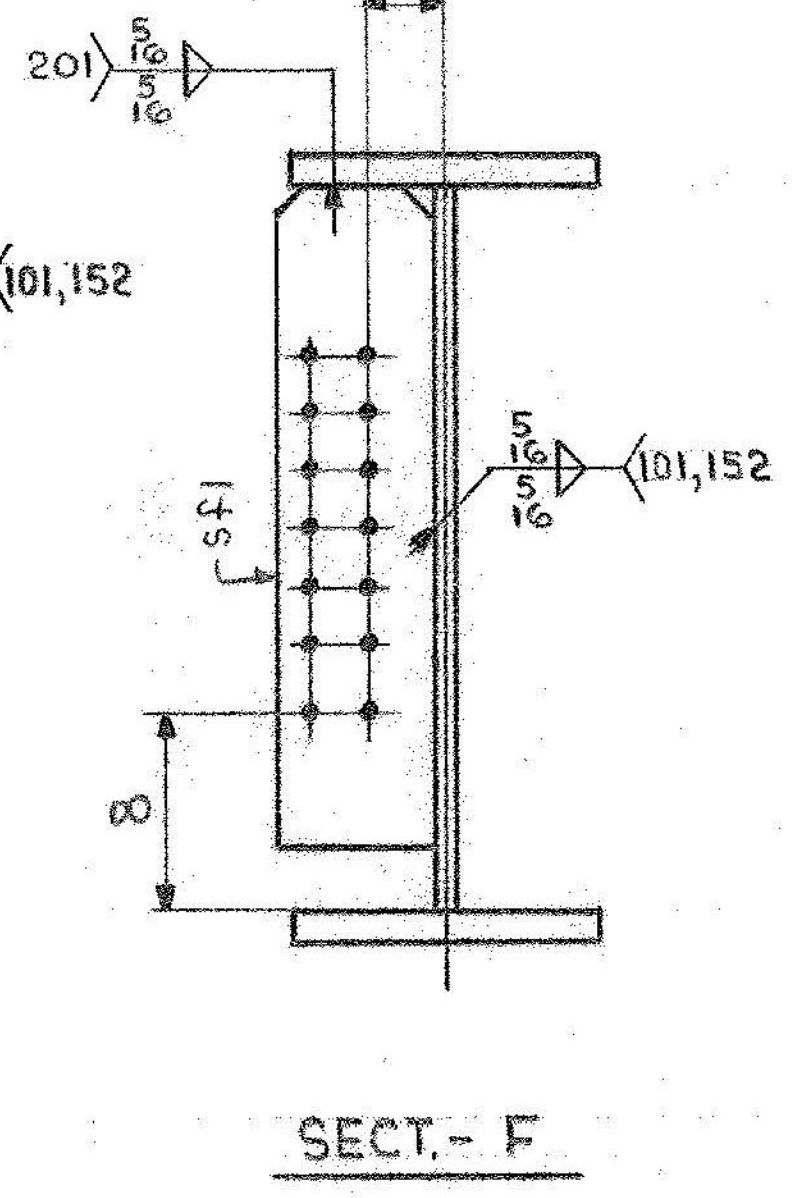
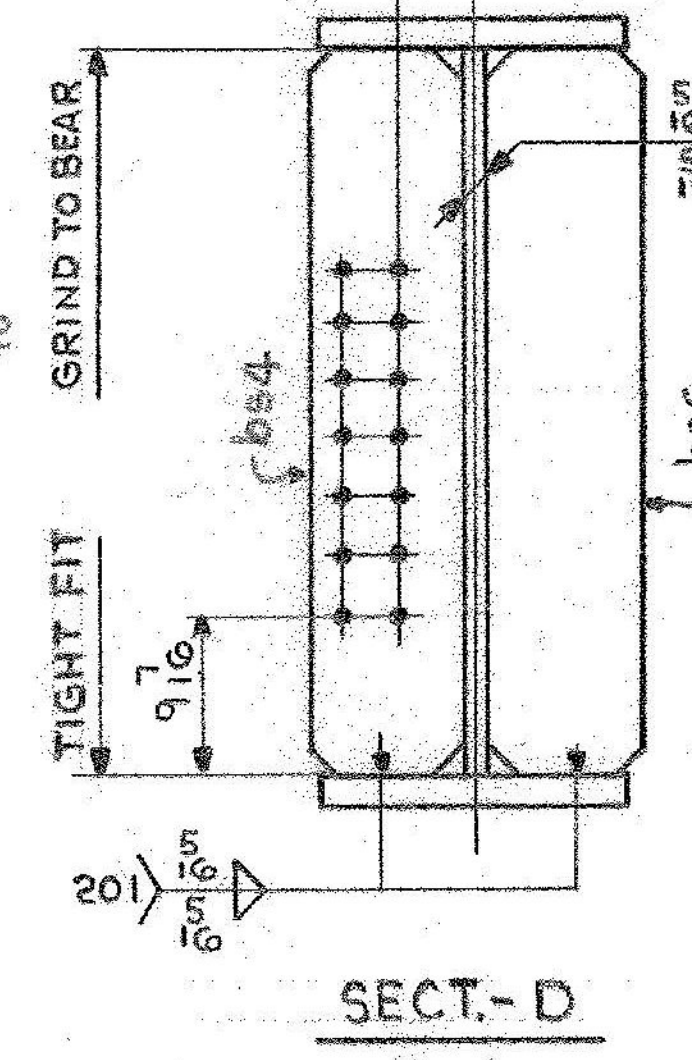
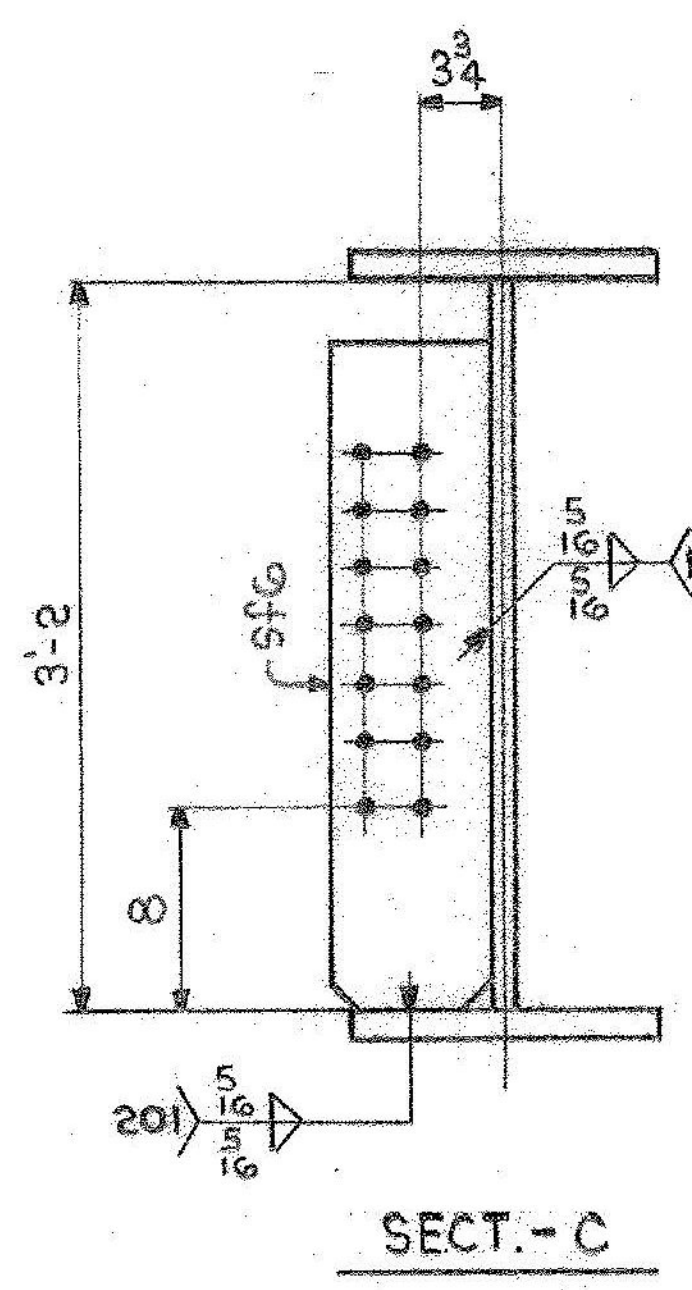
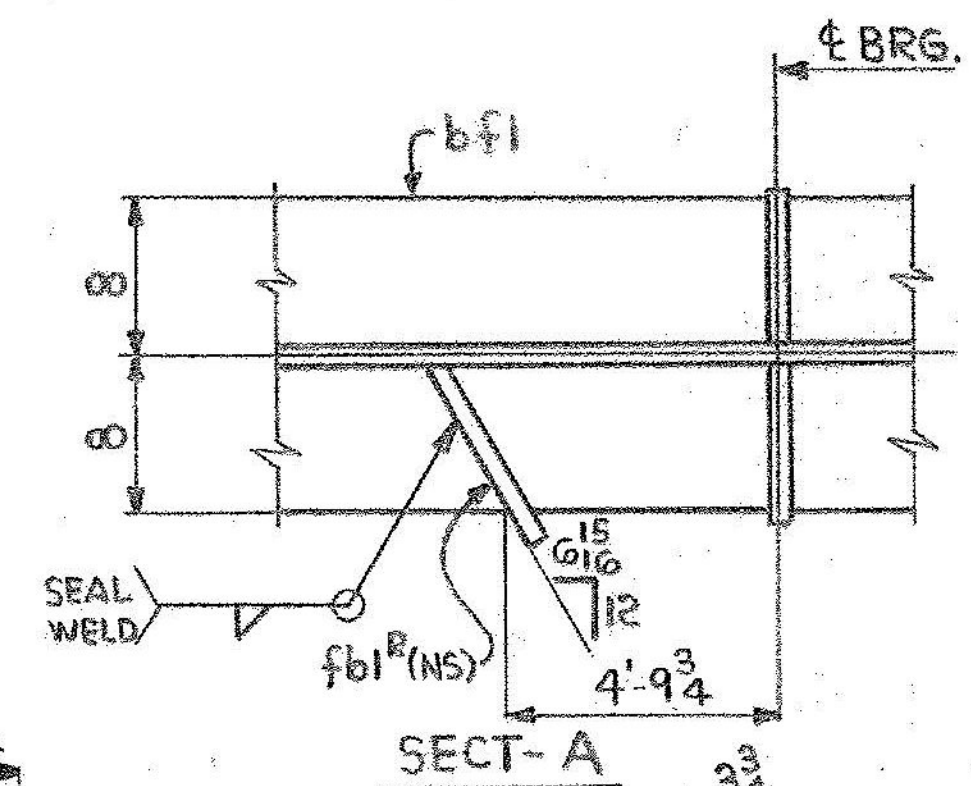
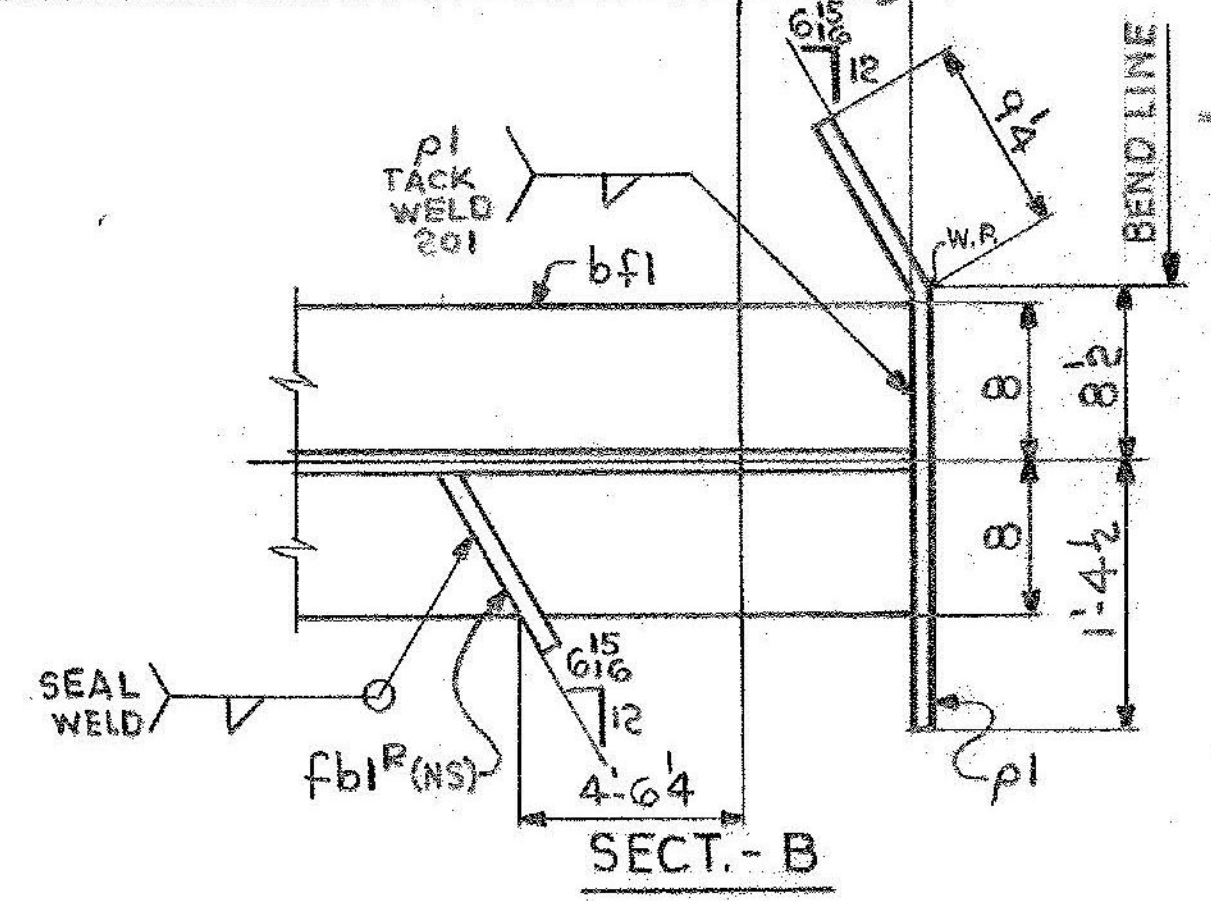
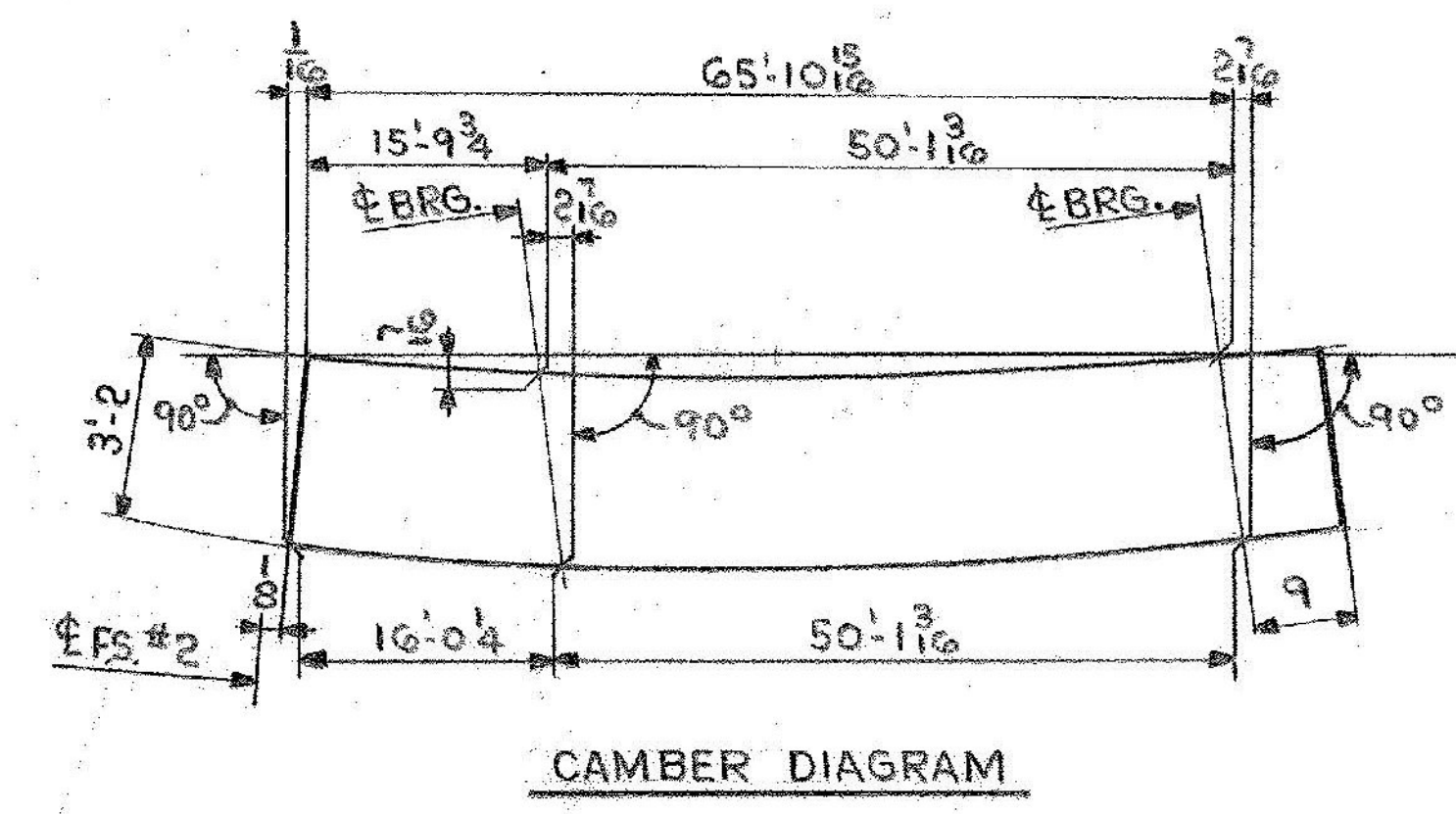


JOB NO.		DRAWING NO.		REV.		
4-46		52-11		△		
MARK	NO.	MARK	SHAPE	LENGTH	WT	REMARKS
G5C	ONE		GIRDER			
	1	wpi	R 2 x 38 1/2	66 10 1/16	12 0	CVN
	1	tfi	R 1 1/2 x 16	66 7 15/16	1 4083	CVN *
	1	bfi	R 1 1/2 x 16	66 10 1/16	1 4083	CVN *
	1	bs4	R 3/4 x 8	3 2	1 65	
	1	bs6	R 3/4 x 8	3 2	1 65	
	1	sfi	R 1/2 x 8	2 11	1 40	
	2	sf6	R 1/2 x 8	2 11	1 79	
	2	fb1 <sup>R</sup>	R 4 x 3 1/2	0 10 1/8	1 5	
	1	pl	R 4 x 8 3/4	2 10 1/4	1 21	BENT
* PAY WEIGHT						
	1	R 1 1/2 x 16	12 0		735	
	1	R 7/8 x 16	54 7 1/2		289	
	1	R 1 1/2 x 16	22 0 1/4		1349	
	1	R 7/8 x 16	44 10 3/4		2157	
						11,417 # PAY WEIGHT

ONE-GIRDER-G5C  
 FOR GIRDER STANDARD DETAILS SEE DWG. 52-2.  
 FOR WEB & FLG. R CUTTING & ASSEMBLY SEE DWG. 52-1.



DIM. (X)
1'-4
5'-6
9'-6
13'-6
17'-6
21'-6
25'-3
29'-6
33'-6
37'-6
41'-6
45'-6
49'-6
53'-6
57'-6
61'-6
65'-0



IT. NO. 506.91 BR. NO. 5 PROJ. NO. F-EGG-F-020-1(10)

**FOR APPROVAL FOR FILES & FIELD**

STEEL: ASTM  A36  A572 GR50  A588 GR50  (Unless Noted)

WELDING ELECTRODE:  E70  See Welding Proc.  None

SHOP CONN:  Bolted  Welded  None

FIELD CONN:  Bolted  Welded  None

HOLES:  1 1/2"  1 3/8"  1 1/2"  (Unless Noted)  None

PAINT:  None  Shopcoat  Galv. After Fab.  As Noted

SPECIAL PAINT: NONE

SPECIAL CLEANING:  Blast Clean  None  SSPC-SP6

**GIRDER - G5C**

APPROVED: 2-1-85  
 PRINT DIST. 7 12-27-84 APP. 8 2-11-85 FAB. 0 1/16 11-14-85 VAT

*Bancroft & Martin Inc.*  
 South Portland, Maine 04106

JOB: U.S. ROUTE 4 E.B. OVER DORR DRIVE  
 RUTLAND, VERMONT

CUSTOMER: MASKELL FENCE CO.  
 DESIGNER: STATE OF VERMONT, AGENCY OF TRANS.

REV. △  
 CHECKED: R/L 11-21-84  
 DRAWN: DW 11-26-84

ORDER NO. 4-46  
 JOB NO. 52-11  
 DRAWING NO. 52-11  
 REV. △