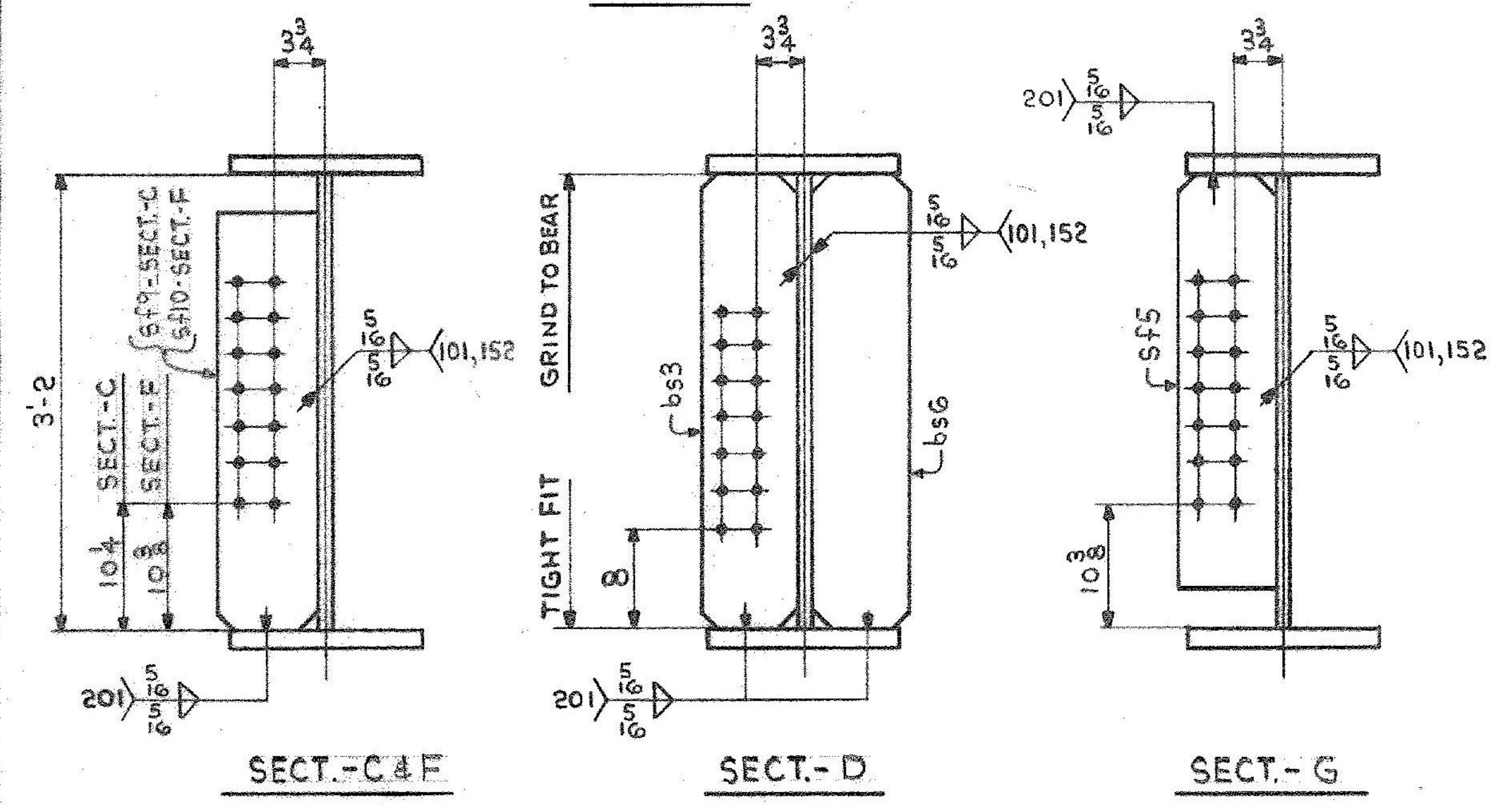
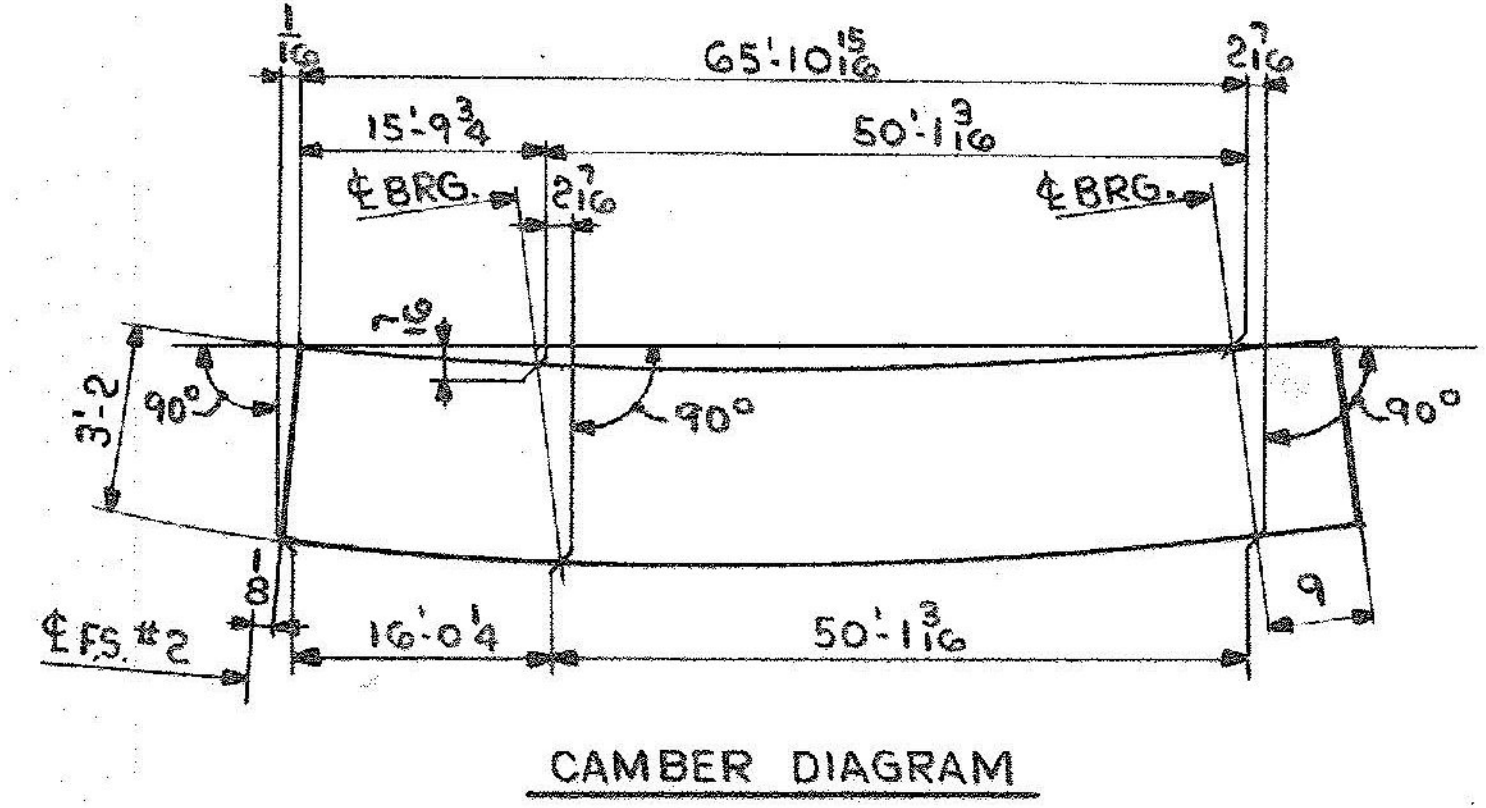


ONE-GIRDER - GIC
 FOR GIRDER STANDARD DETAILS SEE DWG. 52-2.
 FOR WEB & FLG. R CUTTING & ASSEMBLY SEE DWG. 52-1.



DIM. (X)
1'-6
5'-6
9'-6
13'-6
17'-6
21'-6
25'-6
29'-6
33'-6
37'-6
41'-6
45'-6
49'-6
53'-6
57'-6
61'-6
65'-0



SHIP		BILL OF MATERIAL				JOB NO.	DRAWING NO.	REV.
GIC ONE		GIRDER				4-46	52-9	△
MARK	NO.	MARK	SHAPE	LENGTH	WFT.	ITEM NO.	WT	REMARKS
	1	wpl	R 2 x 38 1/2	66' 10 1/16	12 3/4	1237	4317	CVN (P.O.)
	1	tfl	R 1 1/2 x 16	66' 7 1/16	10 6 1/2	10	4083	CVN (5/17/84) *
	1	bfi	R 1 1/2 x 16	66' 10 1/16	10 6 1/2	10	4086	CVN *
	1	bs3	R 3/4 x 8	3	2	230219	65	
	1	bs6	R 3/4 x 8	3	2	4-15-24	65	
	1	sf5	R 1/2 x 8	2	11	230219	40	
	1	sf9	R 3/2 x 8	2	11	4-15-24	40	
	1	sf10	R 2 x 8	2	11	4-15-24	40	
	2	fbi	R 4 x 3 1/2	0	10 1/2	FROM 10	5	
	1	pl	R 4 x 8 3/8	2	10 1/2	FROM 10	21	BENT

*** PAY WEIGHT**

1	R 1 1/2 x 16	12	0	735
1	R 3/2 x 16	54	7 1/2	2604
1	R 1 1/2 x 16	22	0 1/4	1349
1	R 3/8 x 16	44	10 1/16	2137
				11,418 #

IT. NO. 506.91 BR. NO. 5 PROJ. NO. F-EGC-F-020-1(10)

FOR APPROVAL | FOR FILES & FIELD

STEEL: ASTM. A36 A572 GR1 A588 GR1 Unless Noted

WELDING ELECTRODE: E70 See Welding Proc. None

SHOP CONN: Bolted Welded None

FIELD CONN: Bolted Welded None

HOLES: 13/16 15/16 Unless Noted None

PAINT: None Shopcoat Galv. After Fab. As Noted

SPECIAL PAINT: NONE

SPECIAL CLEANING: Blast Clean None SSPC-SP6

GIRDER - GIC

APPROVED: 2-1-85
 PRINT DIST.
 7 12-27-84 APP.
 8 2-11-85 FAB.
 ORG. 11-4-85 VAT

Rancroft & Martin Inc.
 South Portland, Maine 04108

JOB: U.S. ROUTE 4 E.B. OVER DORR DRIVE
 RUTLAND, VERMONT

CUSTOMER: MASKELL FENCE CO.
 DESIGNER: STATE OF VERMONT, AGENCY OF TRANS.

REV. △
 CHECKED RW 11-21-84
 DRAWN DW 11-26-84

ORDER NO. 4-46 JOB NO. 52-9 DRAWING NO. REV. △