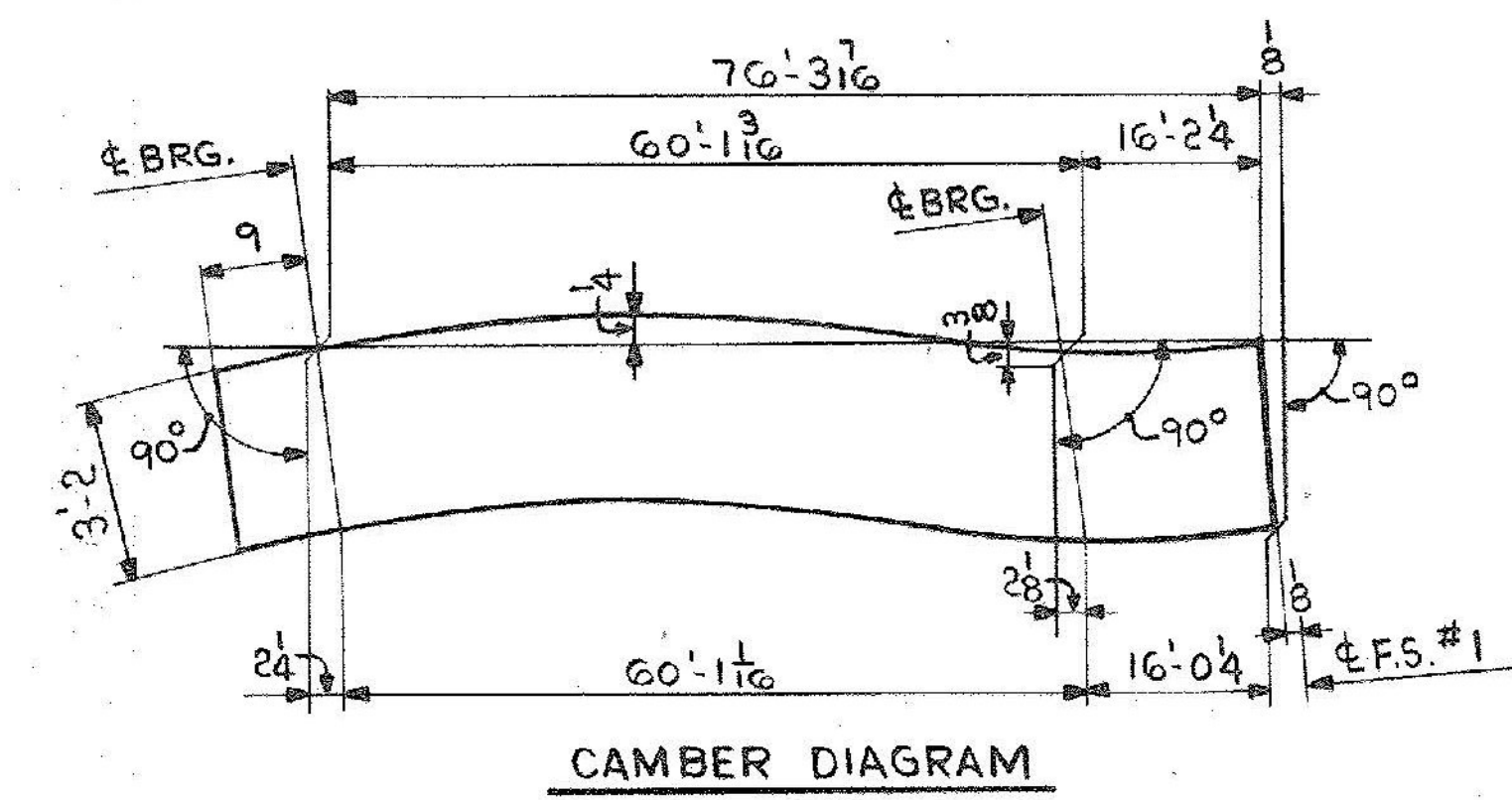
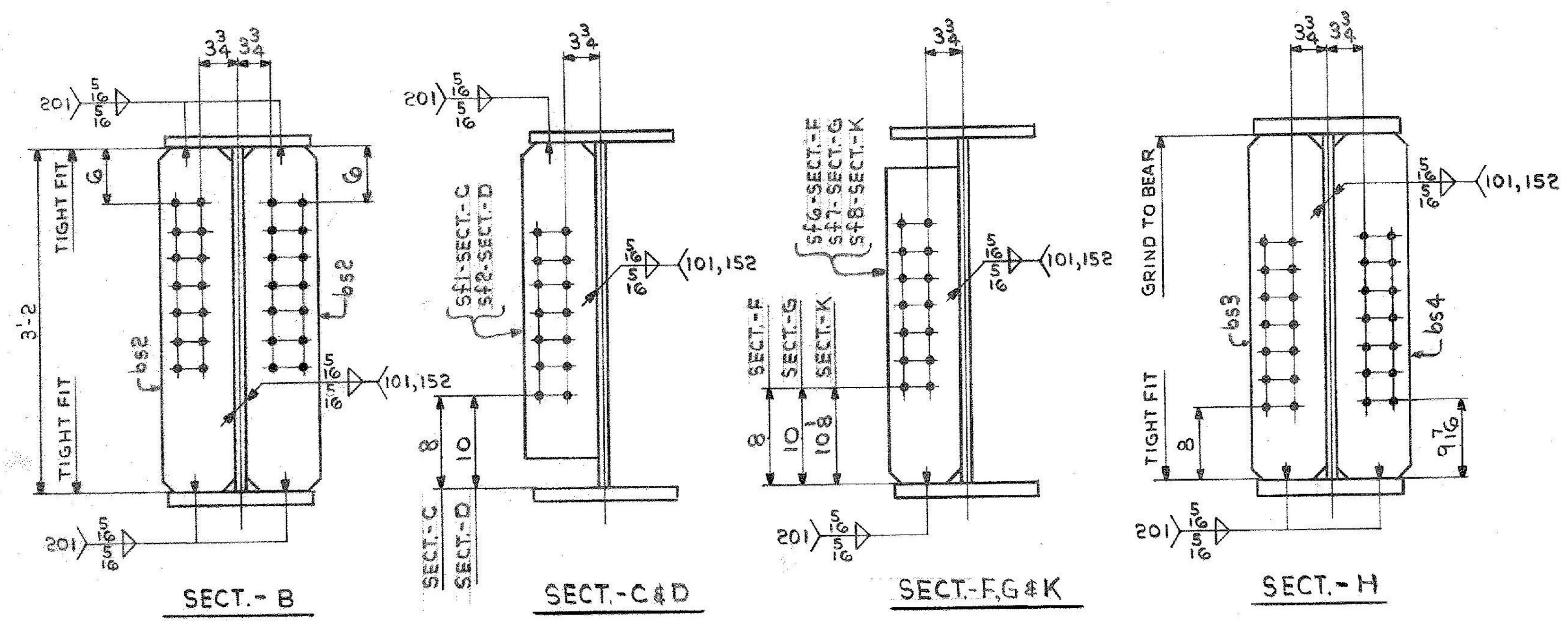


ONE-GIRDER-G2A  
 ONE-GIRDER-G3A  
 ONE-GIRDER-G4A

ALIKE UNTIL REAMED

FOR GIRDER STANDARD DETAILS SEE DWG.52-2.  
 FOR WEB & FLG. & CUTTING & ASSEMBLY SEE DWG.52-1.



SHIP		BILL OF MATERIAL				JOB NO.	DRAWING NO.	REV.
						4-46	52-4	△
MARK	NO.	MARK	SHAPE	LENGTH	WT.	ITEM	WT.	REMARKS
G2A	ONE		GIRDER					
G3A	ONE		GIRDER					
G4A	ONE		GIRDER					
	3	WPI	R 2 x 38 3/8	77 0 1/16	37 1/2 X 77 3	A	1472	CVN
	3	tf1	R 1 1/2 x 16	77 0 1/16	3 2 77 3	E	1455	CVN
	3	bfl	R 1 1/2 x 16	76 10 5/16	3 0 77 1	F	1423	CVN
	6	bs2	R 3/4 x 8	3 2	10 0 20 0	P	388	
	3	bs3	R 3/4 x 8	3 2	3 1/2 5 5	P	194	
	3	bs4	R 3/4 x 8	3 2	4 1/2 2 8	P	194	
	6	SF1	R 1/2 x 8	2 11	2 3 0	G	238	
	6	SF2	R 1/2 x 8	2 11	2 1 0	G	238	
	6	SF6	R 1/2 x 8	2 11	3 1/2 3 9	G	238	
	3	SF7	R 1/2 x 8	2 11	4 1/2 3	G	119	
	3	SF8	R 1/2 x 8	2 11	4 1/2 3	G	119	
							44731	# SHIPPING WEIGHT
* PAY WEIGHT								
	3		R 1 1/2 x 16	12 0				2205
	3		R 7/8 x 16	65 0 7/16				7275
	3		R 1 1/8 x 16	22 0 4				4046
	3		R 7/8 x 16	54 10 1/16				7837
								40036 # PAY WEIGHT

IT. NO. 506.91 BR. NO. 5 PROJ. NO. F-EGC-F-020-1(10)

**FOR APPROVAL** **FOR FILES & FIELD**

STEEL: ASTM  A36  A572 GR1  A588 GR1  Unless Noted

WELDING ELECTRODE:  E70  See Welding Proc.  None

SHOP CONN:  Bolted  Welded  None

FIELD CONN:  Bolted  Welded  None

HOLES:  13/16  15/16  Unless Noted  None

PAINT:  None  Shopcoat  Galv. After Fab.  As Noted

SPECIAL PAINT: NONE

SPECIAL CLEANING:  Blast Clean  None  SSPC-SP6

GIRDERS-G2A, G3A & G4A

APPROVED: 2-1-85  
 PRINT DIST.  
 7 12-21-84 APP.  
 8 2-11-85 FAB.

ORIG 11-4-85 V.A.T.

**Bancroft & Martin Inc.**  
 South Portland, Maine 04106

JOB: U.S. ROUTE 4 E.B. OVER DORR DRIVE  
 RUTLAND, VERMONT

CUSTOMER: MASKELL FENCE CO.  
 DESIGNER: STATE OF VERMONT, AGENCY OF TRANS.

REV. △  
 CHECKED R.W. 12-21-84  
 DRAWN D.W. 11-20-84

ORDER NO. JOB NO. DRAWING NO. REV.  
 4-46 52-4 △