

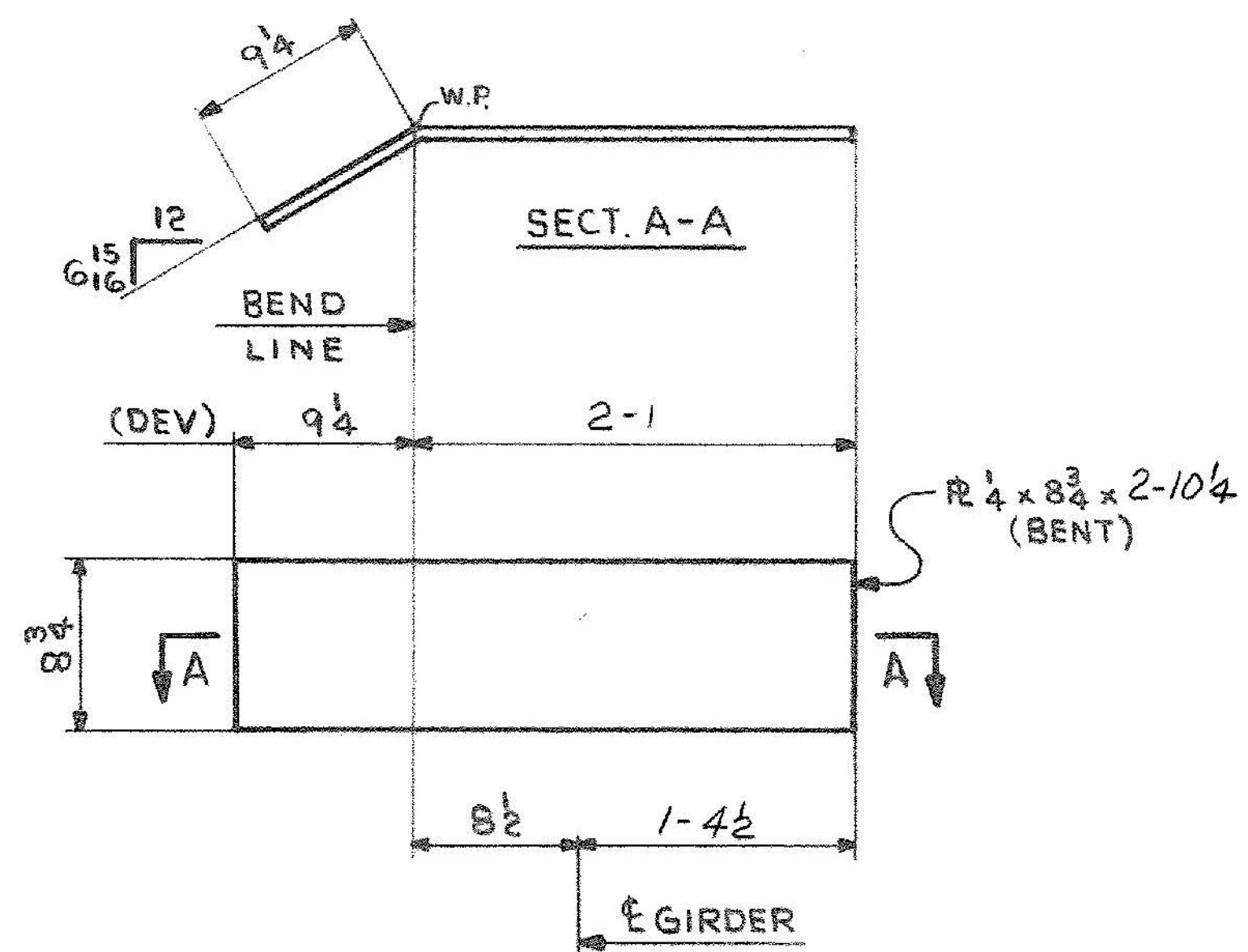
2 - bs1  
4 - bs6

8 - bs2

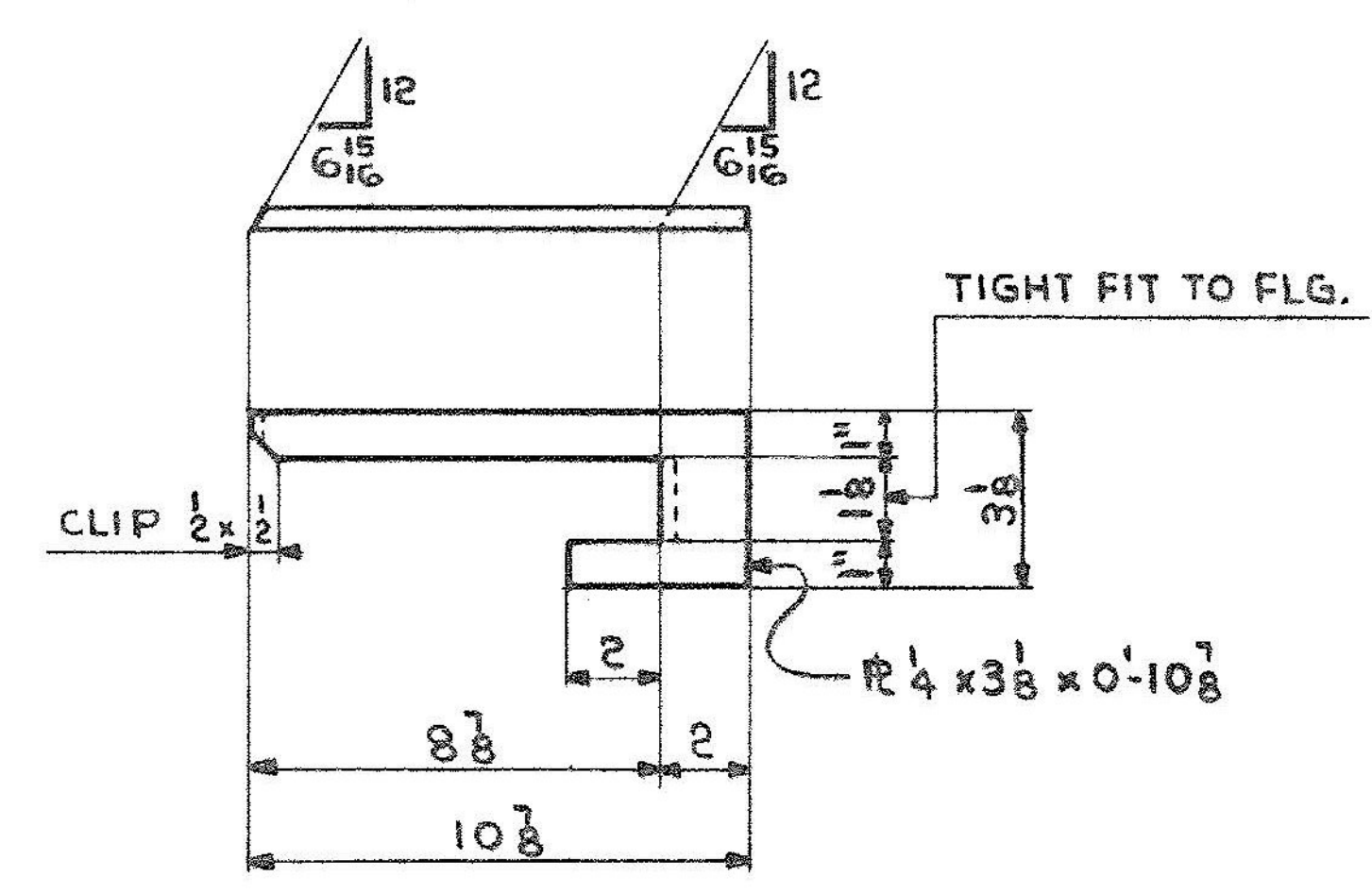
MARK	N <sup>o</sup> REQ'D	(A)
bs3	8	8
bs4	8	9 7/16

MARK	N <sup>o</sup> REQ'D	(B)	(C)
sf1	20	8	5
sf2	8	10	7
sf3	4	10 1/8	7 1/8
sf4	4	10 1/4	7 1/4
sf5	4	10 3/8	7 3/8

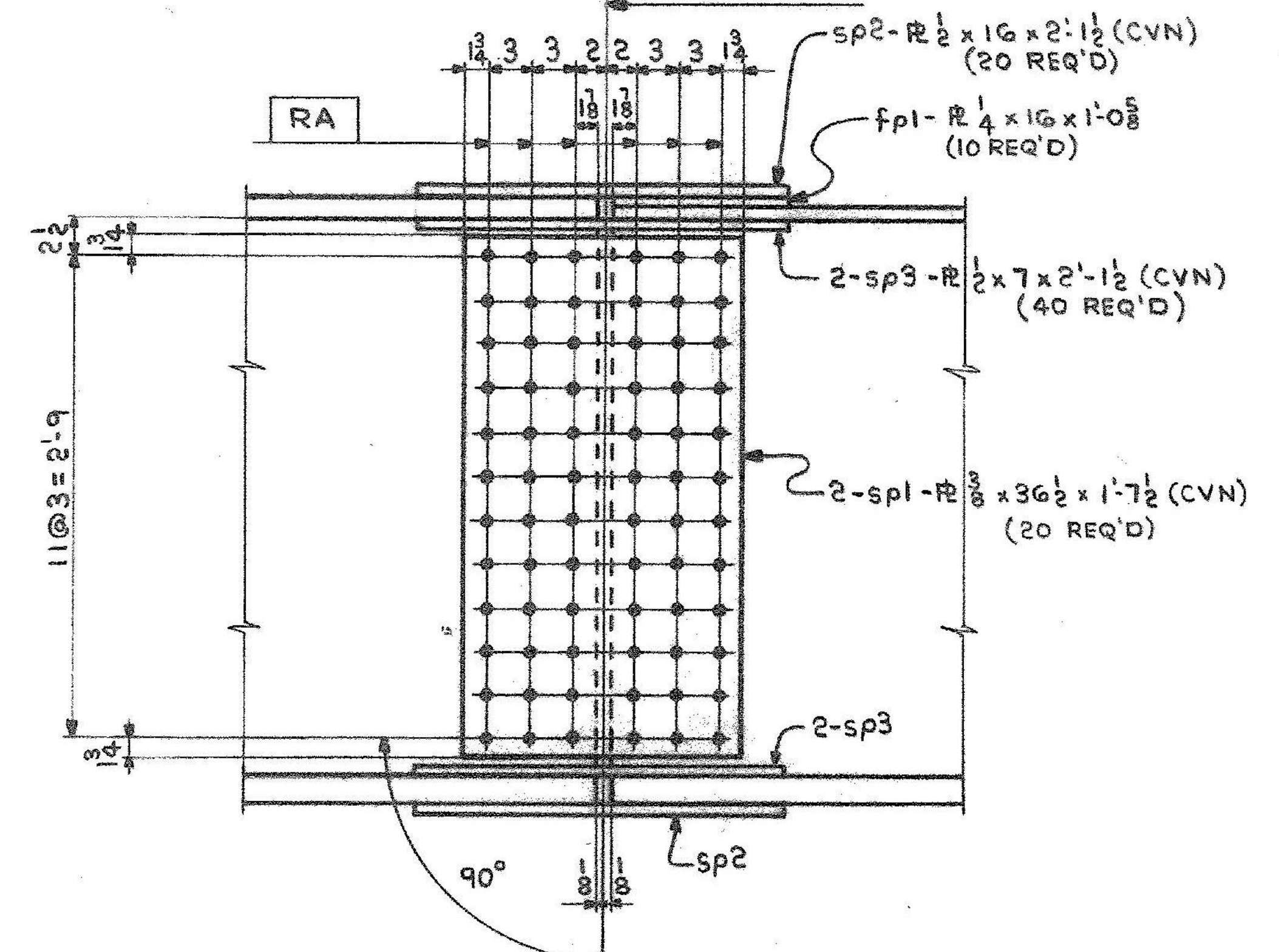
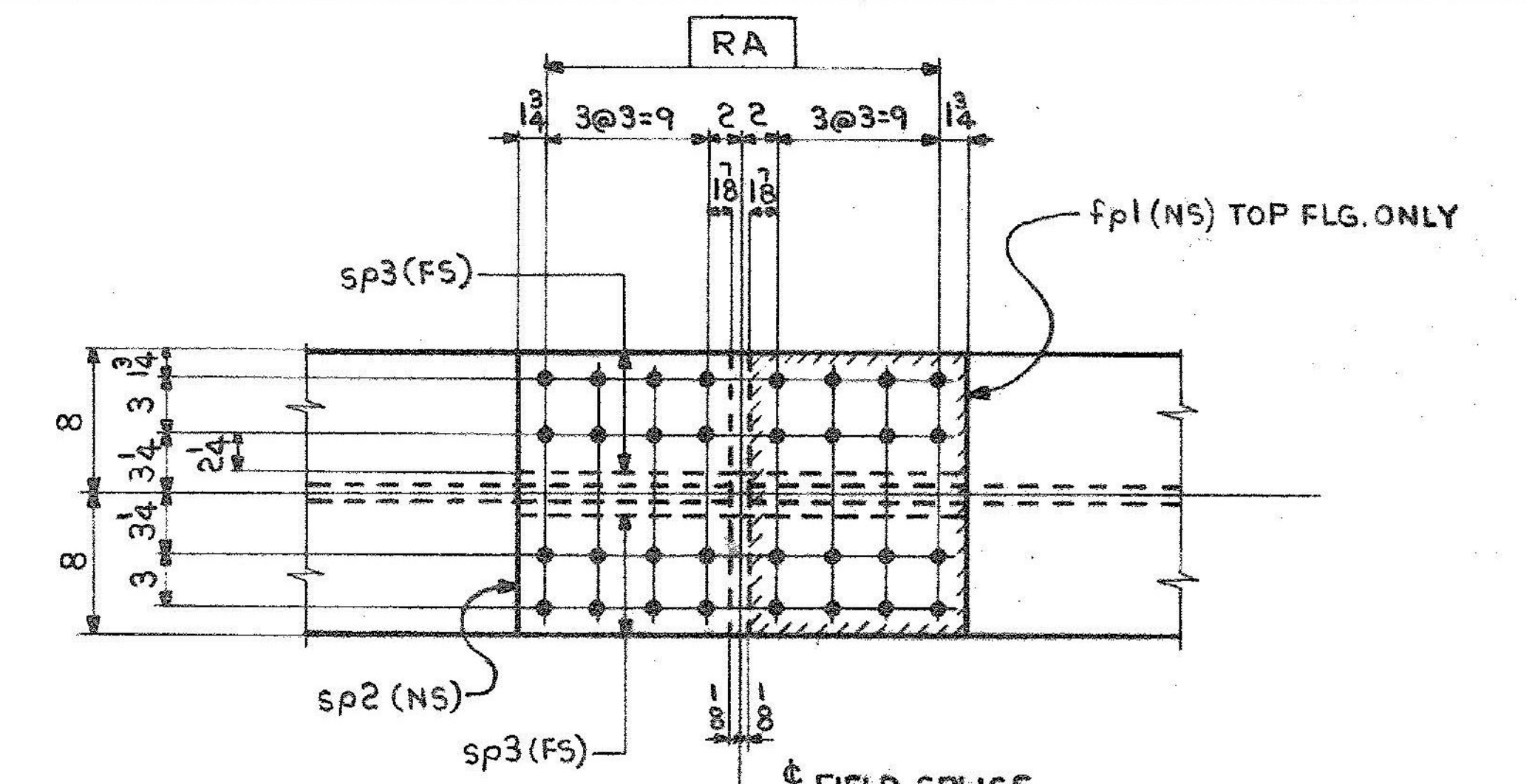
MARK	N <sup>o</sup> REQ'D	(D)
sf6	16	8
sf7	4	10
sf8	4	10 1/8
sf9	4	10 1/4
sf10	4	10 3/8



5 - p1



3 - fb1<sup>R</sup>  
3 - fb1<sup>L</sup>



FIELD SPLICE DETAIL  
FS#1 (AS SHOWN)  
FS#2 (ROTATED 180°)

SHOP NOTE: HOLES NOTED [RA] TO BE SUB-PUNCHED OR SUB-DRILLED 11/16" AND REAMED TO 15/16" WITH ALL PARTS ASSEMBLED OR DRILL FULL SIZE (15/16") FROM THE SOLID WITH ALL PARTS ASSEMBLED. ALL GIRDERS MUST BE ASSEMBLED PER "SHOP ASSEMBLY DIAGRAM" (DWG. 52-1) PRIOR TO REAMING OR DRILLING.

NOTES:  
1. ALL MAT'L ASTM A588  
2. HOLES - 15/16" φ (U.N.)

IT. NO. 506.91	BR. NO. 5	PROJ. NO. F-EGC-F-020-1(10)			
<b>FOR APPROVAL</b>		<b>FOR FILES &amp; FIELD</b>			
<b>GIRDER STANDARD DETAILS</b>					
APPROVED: 2-1-85	<i>Bancroft &amp; Martin Inc.</i> South Portland, Maine 04106 JOB: U.S. ROUTE 4 E.B. OVER DORR DRIVE RUTLAND, VERMONT CUSTOMER: MASKELL FENCE CO. DESIGNER: STATE OF VERMONT, AGENCY OF TRANS.				
PRINT DIST.					
7 12-27-84 APP.					
8 2-11-85 FAB.					
ORIG 11-14-85 VAT					
REV. Δ	ORDER NO.	JOB NO.	DRAWING NO.	REV.	
CHECKED RW 12-21-84			4-46	52-2	Δ
DRAWN DW 11-20-84					