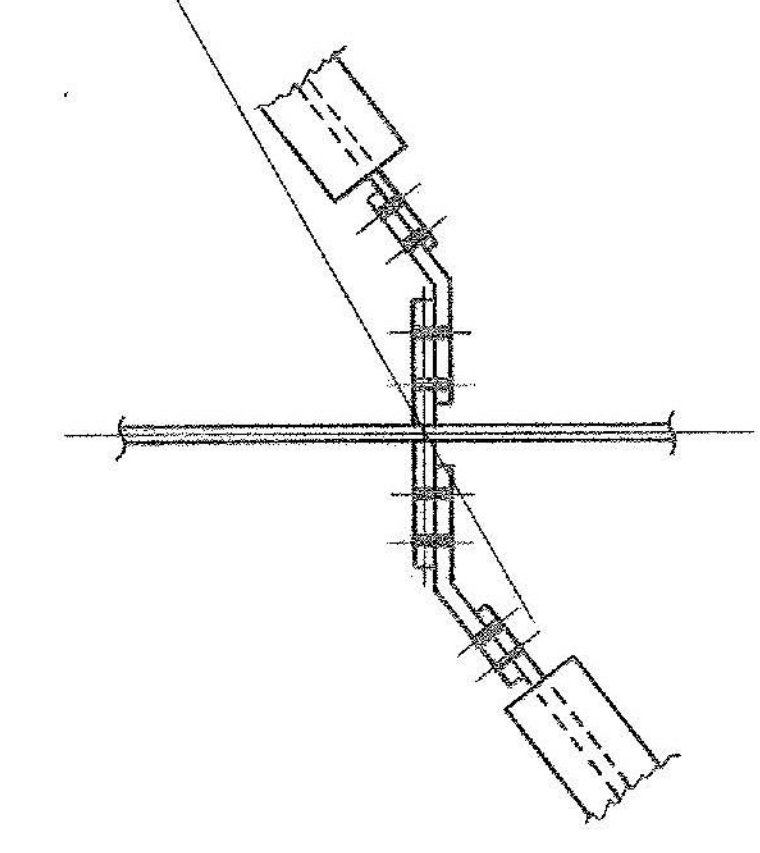


EASTBOUND FRAMING PLAN



TYP. DET. @ ABUT. & PIERS

FORM BRACKET HOLES

FORM BRACKET HOLES ARE TO BE PLUGGED WITH 3/8" x 2 A325, TYPE 3 HIGH STRENGTH BOLTS. HEADS ARE TO BE ON OUTSIDE. HOLES TO BE COMPLETELY COVERED.

IT. NO. 506.91		BR. NO. 5		PROJ. NO. F-EGC-F-020-1(10)	
FOR APPROVAL		FOR FILES & FIELD			
<u>EASTBOUND FRAMING PLAN</u>					
APPROVED: 2-1-85		<i>Bancroft & Martin Inc.</i> South Portland, Maine 04106 JOB: U.S. RTE. 4 E.B. OVER DORR DRIVE RUTLAND, VERMONT.			
PRINT DIST.					
7	12-27-84	APP.			
B	2-11-85	FAB.			
DRG	11-17-85	VAT			
CUSTOMER: MASKELL FENCE CO.		DESIGNER: STATE OF VERMONT AGENCY OF TRANS.			
REV. A		ORDER NO.	JOB NO.	DRAWING NO.	REV.
CHECKED	12-21-84 RLA			4-46	E-1
DRAWN	11-5-84 RLA				