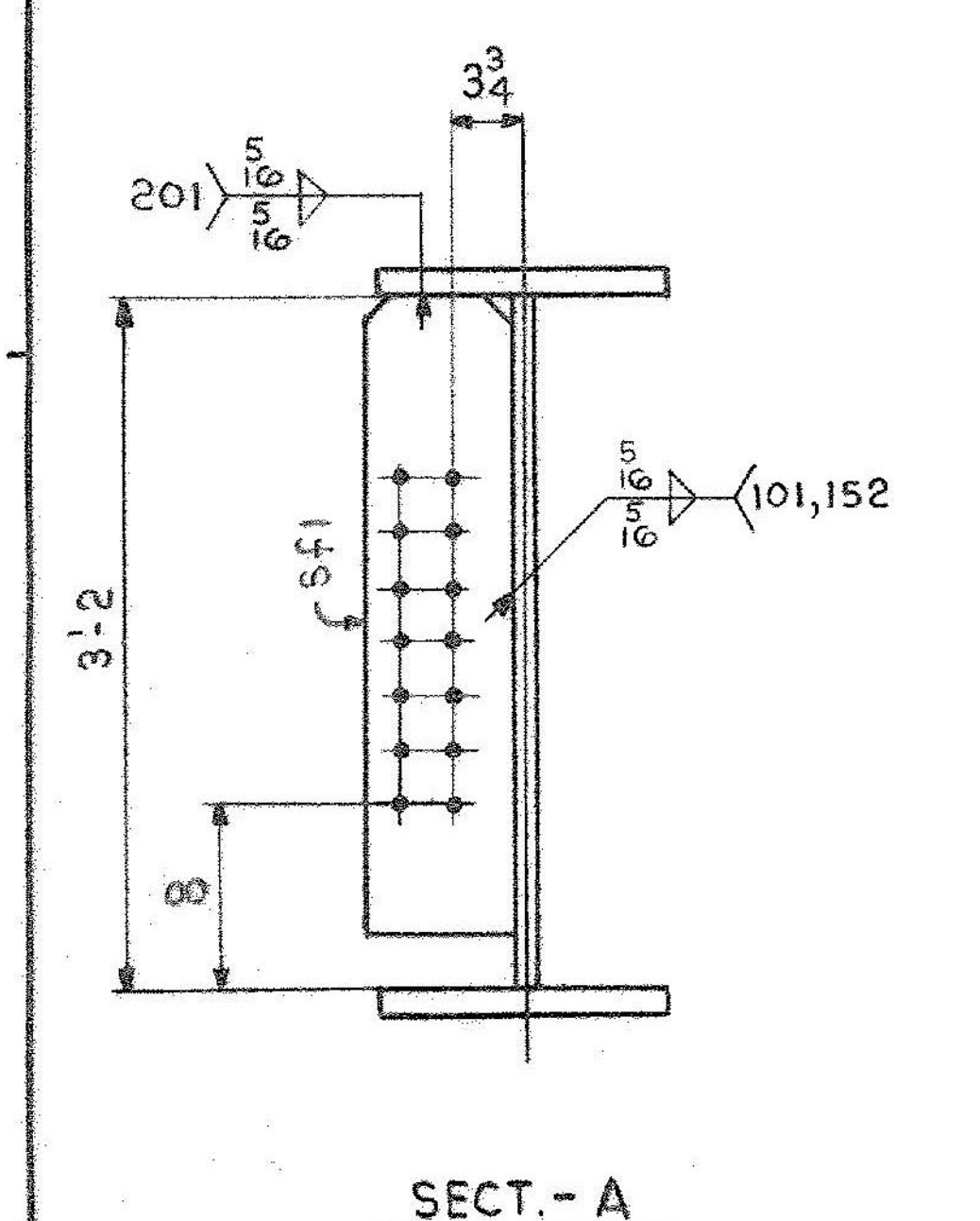
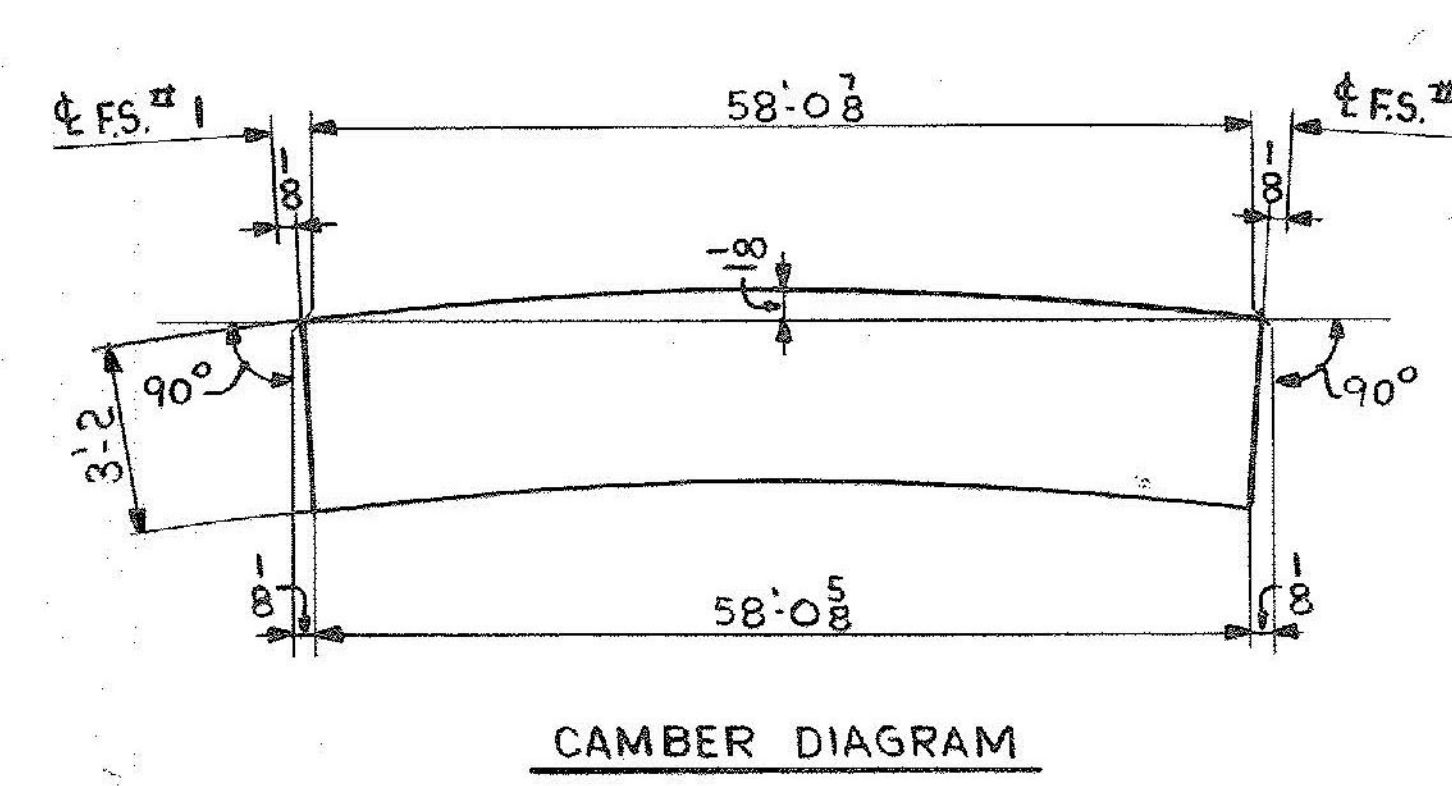


**ONE-GIRDER-G5B**  
 FOR GIRDER STANDARD DETAILS SEE DWG. 52-2.  
 FOR WEB & FLG. R CUTTING & ASSEMBLY SEE DWG. 52-1.



DIM. (X)
3'-0
7'-0
11'-0
15'-0
19'-0
23'-0
27'-0
31'-0
35'-0
39'-0
43'-0
47'-0
51'-0
55'-0



SHIP		BILL OF MATERIAL		JOB NO.	DRAWING NO.	REV.		
G5B		ONE	GIRDER	4-45	52-8	△		
MARK	NO.	MARK	SHAPE	LENGTH	WT.	ITEM NO.	WT.	REMARKS
	1	wpl	R 1/2 x 39 1/8	58 0 7/8	10 1/2	B 3754		CVN
	1	tf1	R 3/8 x 16	58 0 7/8	10 5/8	J 2767		CVN
	1	bf1	R 1 1/8 x 16	58 0 7/8	10 5/8	J 3358		CVN
	4	sp1	R 3/8 x 36 1/2	1 7 1/2	30 37 x	N 303		CVN / P.O. *
	4	sp2	R 1/2 x 16	2 1 1/2	11 0	O 231		CVN / 31753 *
	8	sp3	R 1/2 x 7	2 1 1/2	4 1/2 x	P 202		CVN *
	1	fp1	R 3/4 x 16	1 0 5/8	10 1/2 x 7 1/2	Q 43		P.O. 31755 *
	1	fp2	R 1/2 x 16	1 0 5/8	10 1/2 x 7 1/2	R 32		P.O. 31755 *
	1	fp3	R 1/2 x 16	1 0 5/8	10 1/2 x 7 1/2	S 18		P.O. 31755 *
	1	fp4	R 1/2 x 16	1 0 5/8	10 1/2 x 7 1/2	T 7		P.O. 31755 *
	2	sf1	R 1/2 x 8	2 11	13 0 x 11 0	B 79		P.O. 31739
								10774 # SHIPPING WEIGHT
								* PAY WEIGHT
	4		R 3/8 x 36	1 6 1/4			279	
	4		R 1/2 x 16	2 0 1/4			220	
	8		R 1/2 x 7	2 0 1/4			193	
								10650 # PAY WEIGHT

IT. NO. 506.91 BR. NO. 5 PROJ. NO. F-EGC-F-020-1(10)

**FOR APPROVAL FOR FILES & FIELD**

STEEL: ASTM  A36  A572 GR1  A588 GR1  Unless Noted

WELDING ELECTRODE:  E70  See Welding Proc.  None

SHOP CONN:  Bolted  Welded  None

FIELD CONN:  Bolted  Welded  None

HOLES:  13/16  15/16  Unless Noted  None

PAINT:  None  Shopcoat  Galv. After Fab.  As Noted

SPECIAL PAINT: NONE

SPECIAL CLEANING:  Blast Clean  None  SSPC-SP6

**GIRDER - G5B**

APPROVED: 2-1-85  
 PRINT DIST.  
 7 12-21-84 APP.  
 8 2-6-85 FAB.  
 ORIG 3-26-86 VAT

*Bancroft & Martin Inc.*  
 South Portland, Maine 04106

JOB: U.S. ROUTE 4 W.B. OVER DORR DRIVE  
 RUTLAND, VERMONT

CUSTOMER: MASKELL FENCE CO.  
 DESIGNER: STATE OF VERMONT, AGENCY OF TRANS.

REV. △	ORDER NO.	JOB NO.	DRAWING NO.	REV.
CHECKED RW 12-21-84			4-45	52-8
DRAWN DW 11-17-84				△