

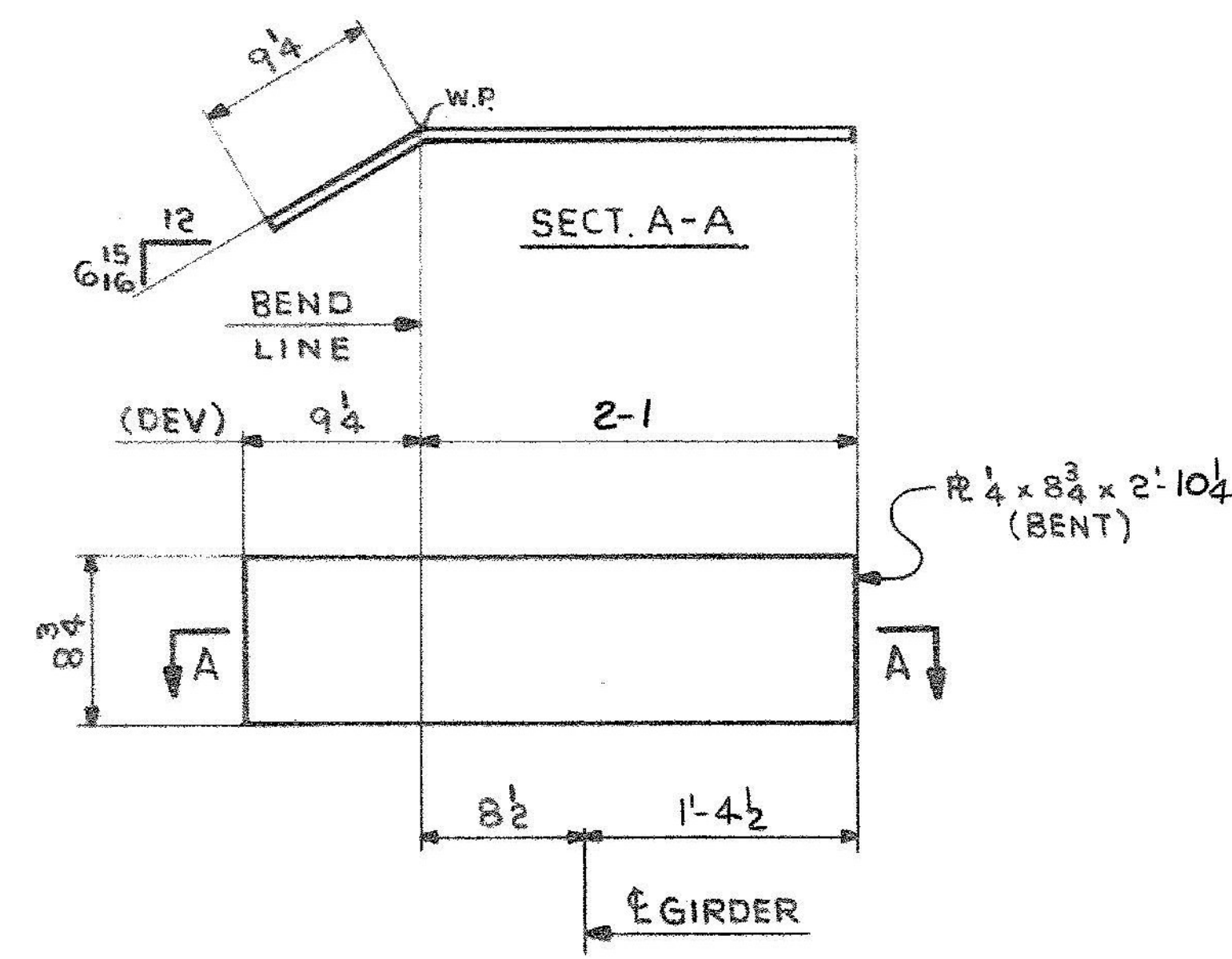
2 - bs1
4 - bs6

8 - bs2

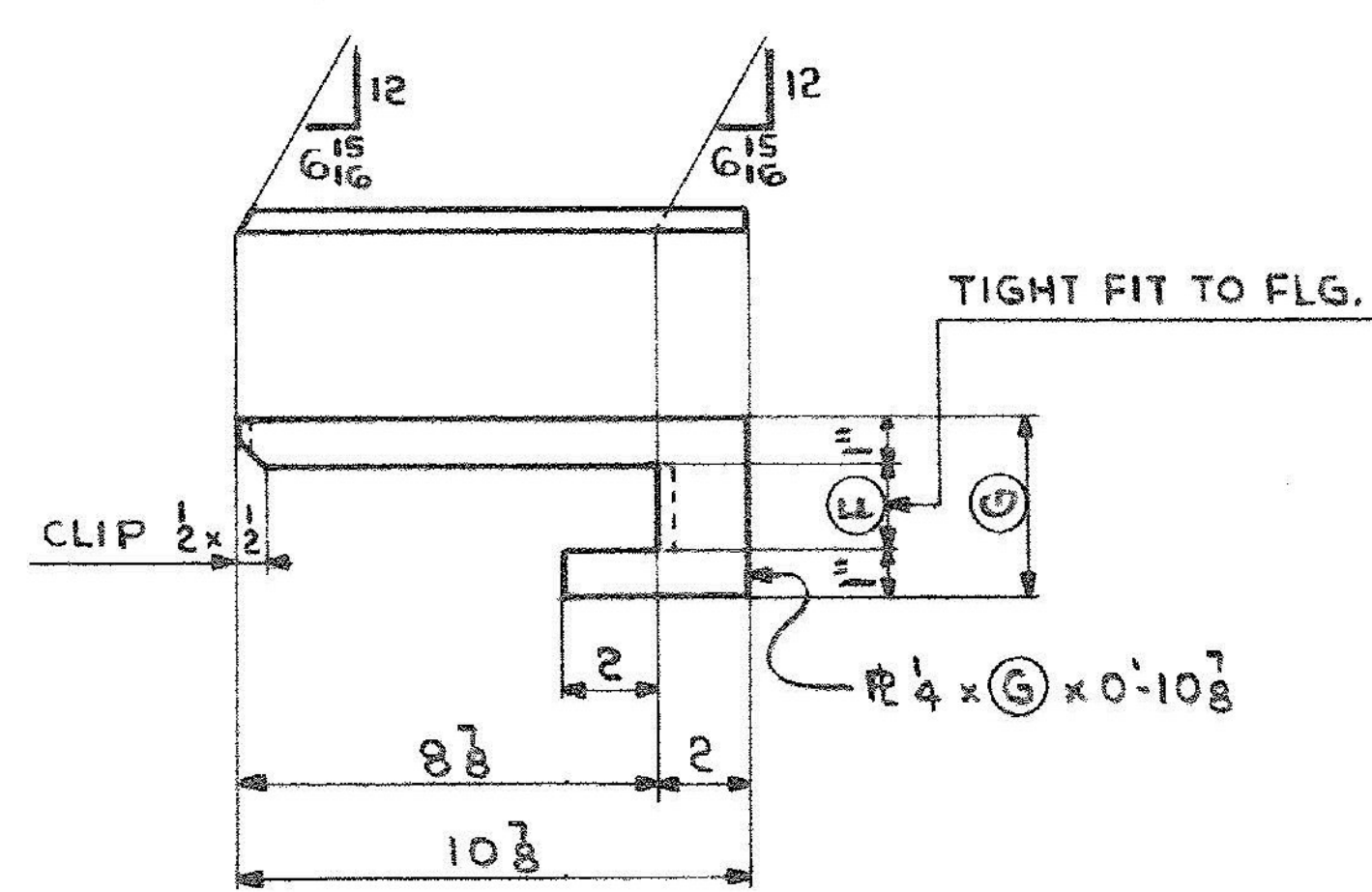
MARK	N ^o REQ'D	(A)
bs3	8	8
bs4	8	8 1/8

MARK	N ^o REQ'D	(B)	(C)
sf1	28	8	5
sf2	12	10	7
sf3	4	10 1/8	7 1/8
sf4	4	10 1/4	7 1/4
sf5	8	10 3/8	7 3/8

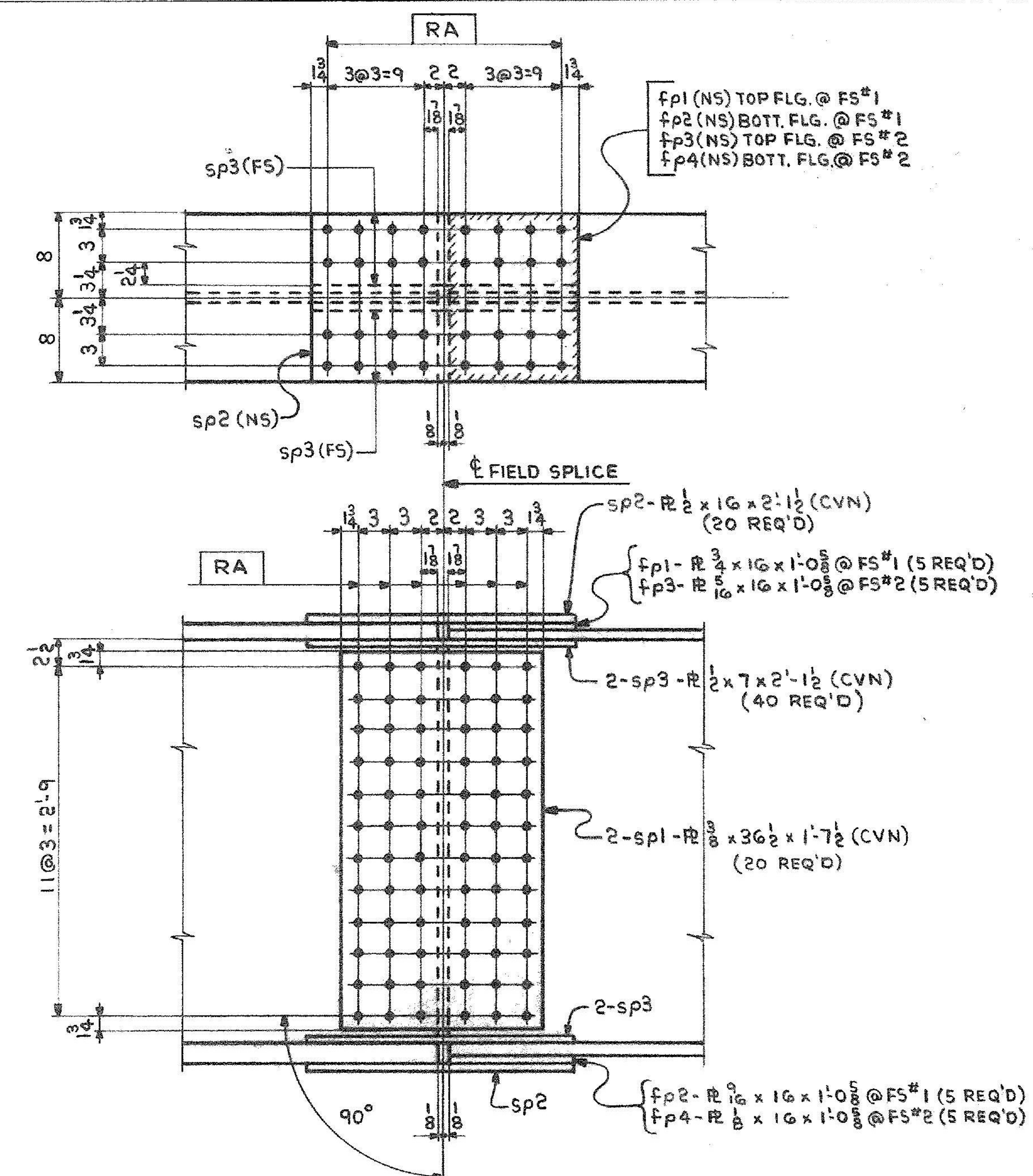
MARK	N ^o REQ'D	(D)
sf6	16	8
sf7	8	10 1/8
sf8	4	10 1/4
sf9	4	10 3/8



5 - p1



MARK	N ^o REQ'D	(F)	(G)
fb1 ^R	1	1 5/8	3 5/8
fb1 ^L	1	1 5/8	3 5/8
fb2 ^R	2	1 3/16	3 3/16
fb2 ^L	2	1 3/16	3 3/16



FIELD SPICE DETAIL
FS#1 (AS SHOWN)
FS#2 (ROTATED 180°)

SHOP NOTE: HOLES NOTED RA TO BE SUB-PUNCHED OR SUB-DRILLED 11/16" AND REAMED TO 15/16" WITH ALL PARTS ASSEMBLED OR DRILL FULL SIZE (15/16") FROM THE SOLID WITH ALL PARTS ASSEMBLED. ALL GIRDEERS MUST BE ASSEMBLED PER "SHOP ASSEMBLY DIAGRAM" (DWG. 52-1) PRIOR TO REAMING OR DRILLING.

NOTES:
1. ALL MAT'L ASTM A588
2. HOLES - 15/16" φ (U.N.)

IT. NO. 506.91	BR. NO. 5	PROJ. NO. F-EGC-F-020-1(10)
FOR APPROVAL		FOR FILES & FIELD
GIRDER STANDARD DETAILS		
APPROVED: 2-1-85	<i>Bancroft & Martin Inc.</i> South Portland, Maine 04106 U.S. ROUTE 4 W.B. OVER DORR DRIVE RUTLAND, VERMONT	
PRINT DIST.		
7 12-27-84 APP.		
8 2-6-85 FAB.		
ORIG 3-26-86 VAT		
CUSTOMER: MASKELL FENCE CO.		JOB:
DESIGNER: STATE OF VERMONT, AGENCY OF TRANS.		
REV. Δ	ORDER NO.	JOB NO.
CHECKED <i>RL</i> 12-21-84		DRAWING NO. REV.
DRAWN <i>DW</i> 11-15-84	4-45	52-2