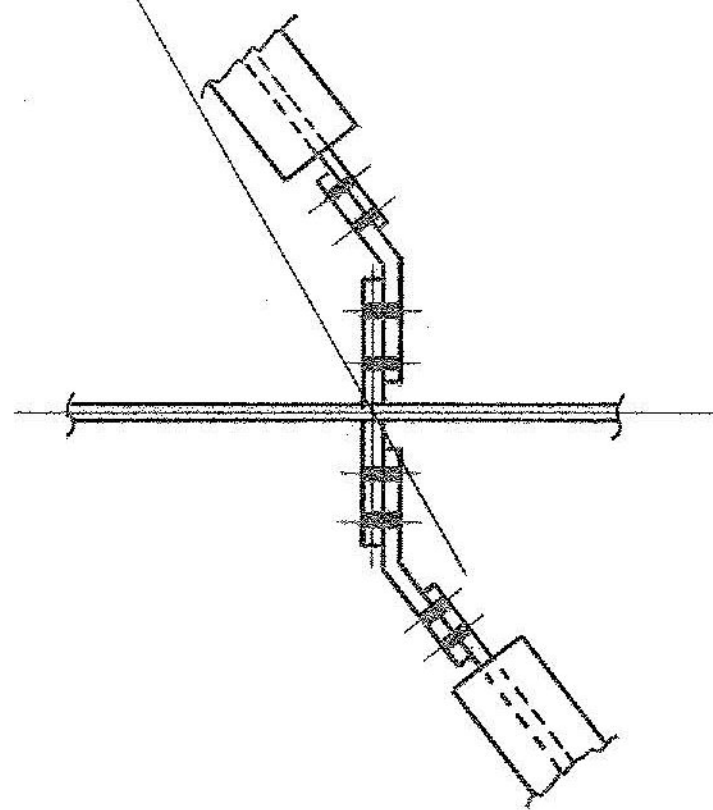


WESTBOUND FRAMING PLAN



TYP. DET. @ ABUT. & PIERS

FORM BRACKET HOLES

FORM BRACKET HOLES ARE TO BE PLUGGED WITH 8" x 2 A325, TYPE 3 HIGH STRENGTH BOLTS. HEADS ARE TO BE ON OUTSIDE. HOLES TO BE COMPLETELY COVERED.

IT. NO. 506.91		BR. NO. 5		PROJ. NO. F-EGC-F-020-1(10)	
FOR APPROVAL			FOR FILES & FIELD		
WESTBOUND FRAMING PLAN					
APPROVED: 2-1-85		Bancroft & Martin Inc. South Portland, Maine 04106			
PRINT DIST.					
7	12-17-84	APP.	JOB: U.S. RTE. 4 W.B. OVER DORR DRIVE RUTLAND, VERMONT		
8	2-6-85	FAB.			
ORIG	3-26-86	VAT	CUSTOMER: MASKELL FENCE CO.		
			DESIGNER: STATE OF VERMONT AGENCY OF TRANS.		
REV. Δ		ORDER NO.	JOB NO.	DRAWING NO.	REV.
CHECKED	12-21-84 RHL			4-45	E-1
DRAWN	11-5-84 RLA				