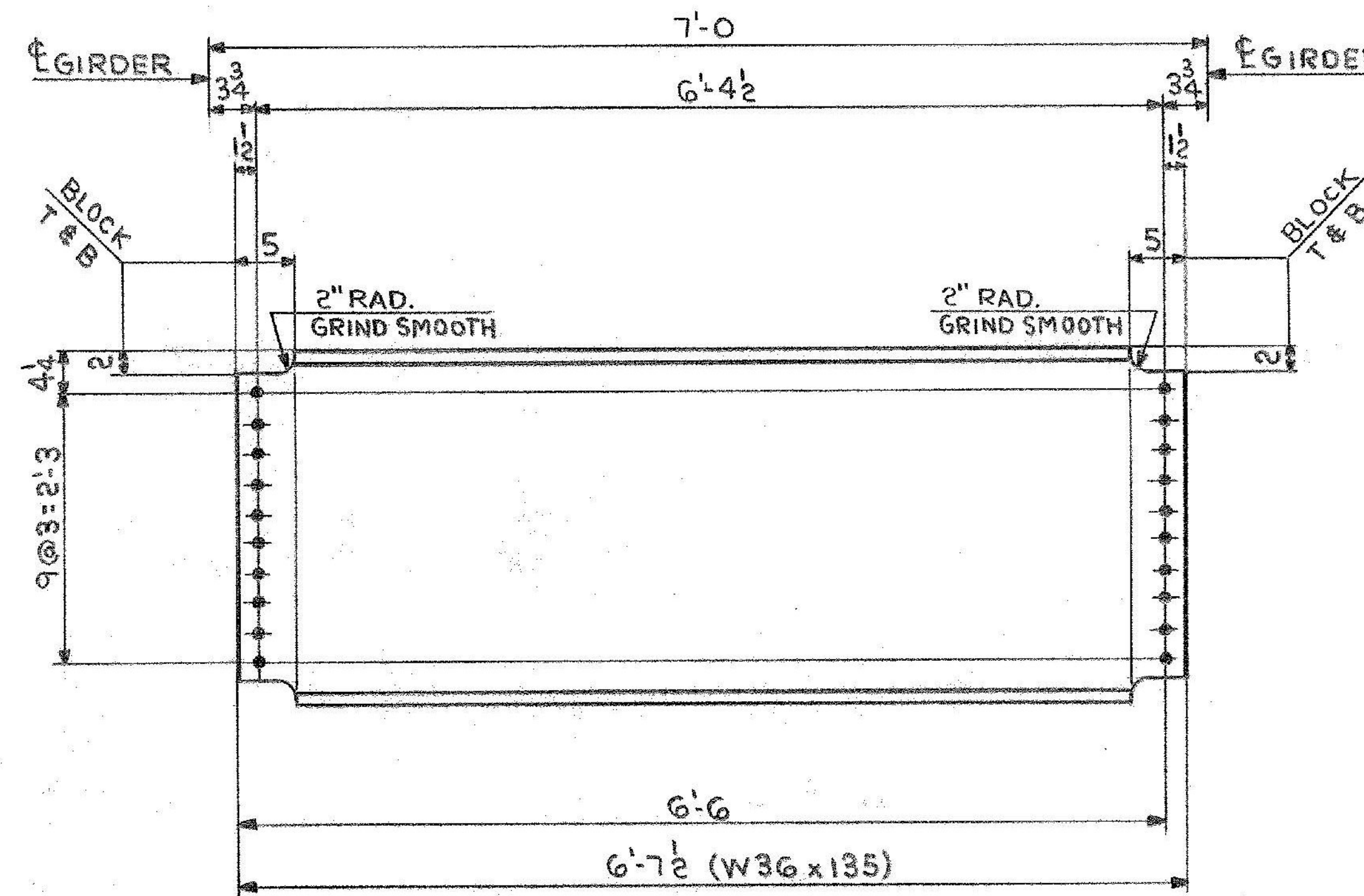


20-DIAPHRAGMS-MK. D1



60-DIAPHRAGMS-MK. D2

| SHIP | | BILL OF MATERIAL | | JOB NO. | DRAWING NO. | REV. |
|------------|-----|------------------|-----------|-----------|-------------|---------|
| | | | | 4-44 | 56-1 | △ |
| MARK | NO. | MARK | SHAPE | LENGTH | WT. | REMARKS |
| DIAPHRAGMS | | | | | | |
| D1 | 20 | | W36 x 135 | 6' 7 1/2" | 2# | 11787 |
| D2 | 60 | | W36 x 135 | 6' 7 1/2" | 3# | 11549# |

IT. NO. 506.91 BR. NO. 6 PROJ. NO. F020-1(10)

FOR APPROVAL | **FOR FILES & FIELD**

STEEL: ASTM: A36 A572 GR1 A992 GR1 Unlabeled

WELDING ELECTRODE: E70 See Welding Proc. None

SHOP CONN: Bolted Welded None

FIELD CONN: Bolted Welded None

HOLES: 13/16 15/16 Unlabeled None

PAINT: None Shopcoat Galv. After Fab. As Noted

SPECIAL PAINT: NONE

SPECIAL CLEANING: Blast Clean None SSPC-SP6

| DIAPHRAGMS | | | |
|---------------------|---|---------|------------------|
| APPROVED: 2-1-85 | Banner & Martin Inc. South Portland, Maine 04106 | | |
| 7 12-18-84 APP. | JOB: U.S. ROUTE 4 E.B. OVER OTTER CREEK RUTLAND, VERMONT | | |
| B 2-26-85 FAB. | CUSTOMER: EARTH CONSTRUCTION | | |
| ORIG 3-20-86 VAT | DESIGNER: STATE OF VERMONT, AGENCY OF TRANS. | | |
| REV. △ | ORDER NO. | JOB NO. | DRAWING NO. REV. |
| CHECKED RW 12-18-84 | | 4-44 | 56-1 △ |
| DRAWN DW 12-4-84 | | | |

ALL CONNECTIONS DETAILED ON THIS DRAWING REPRESENT BANNER & MARTIN INC. STANDARDS. IN APPROVING THIS DRAWING FOR FABRICATION, THE ARCHITECT AND/OR ENGINEER ASSUMES THE RESPONSIBILITY FOR THE STRUCTURAL INTEGRITY OF ALL CONNECTIONS SHOWN.