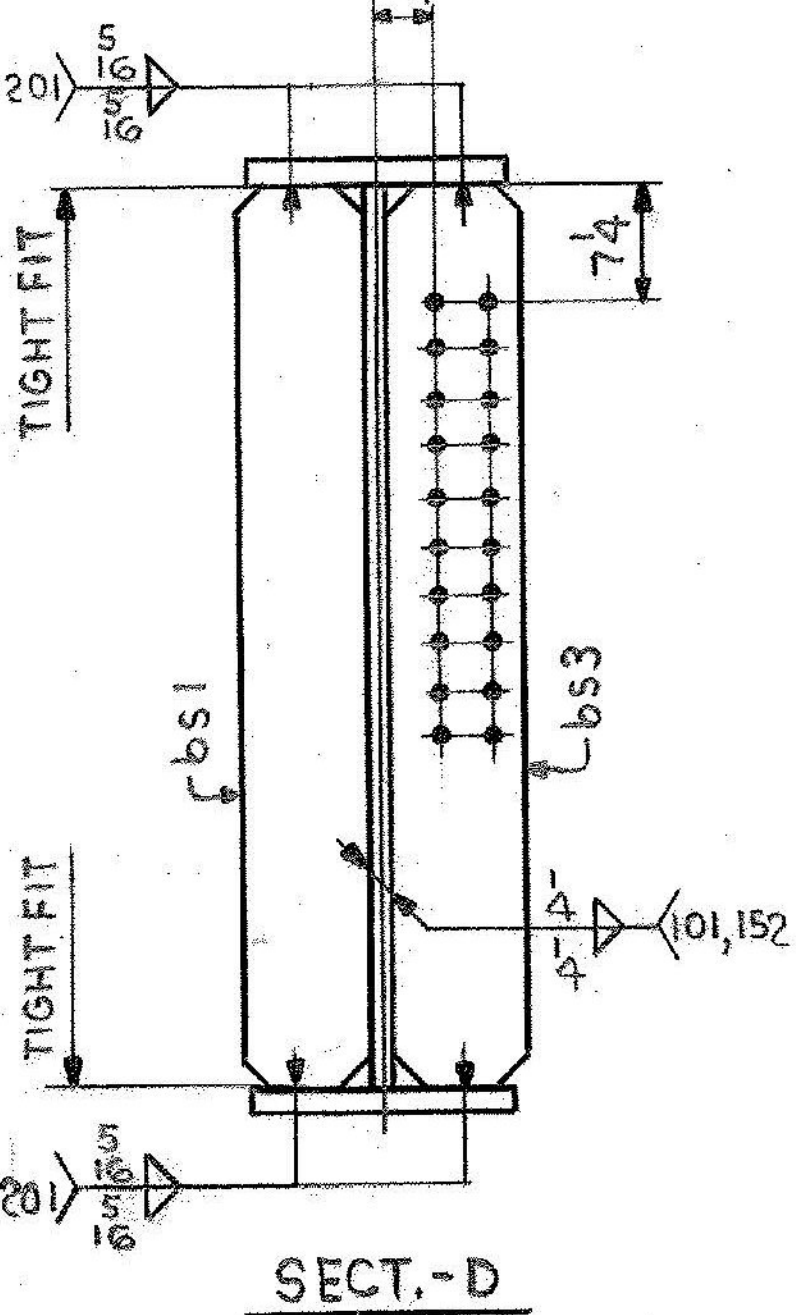
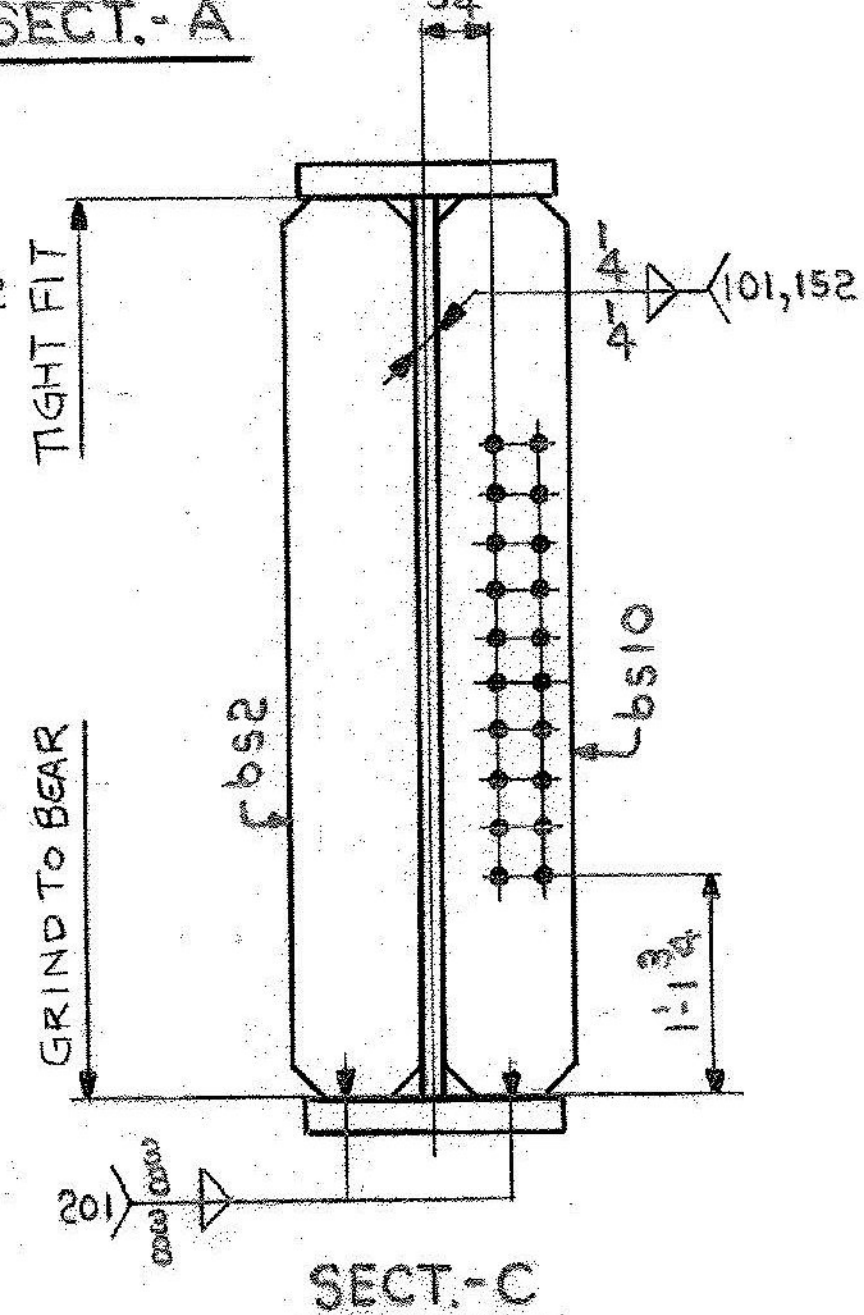
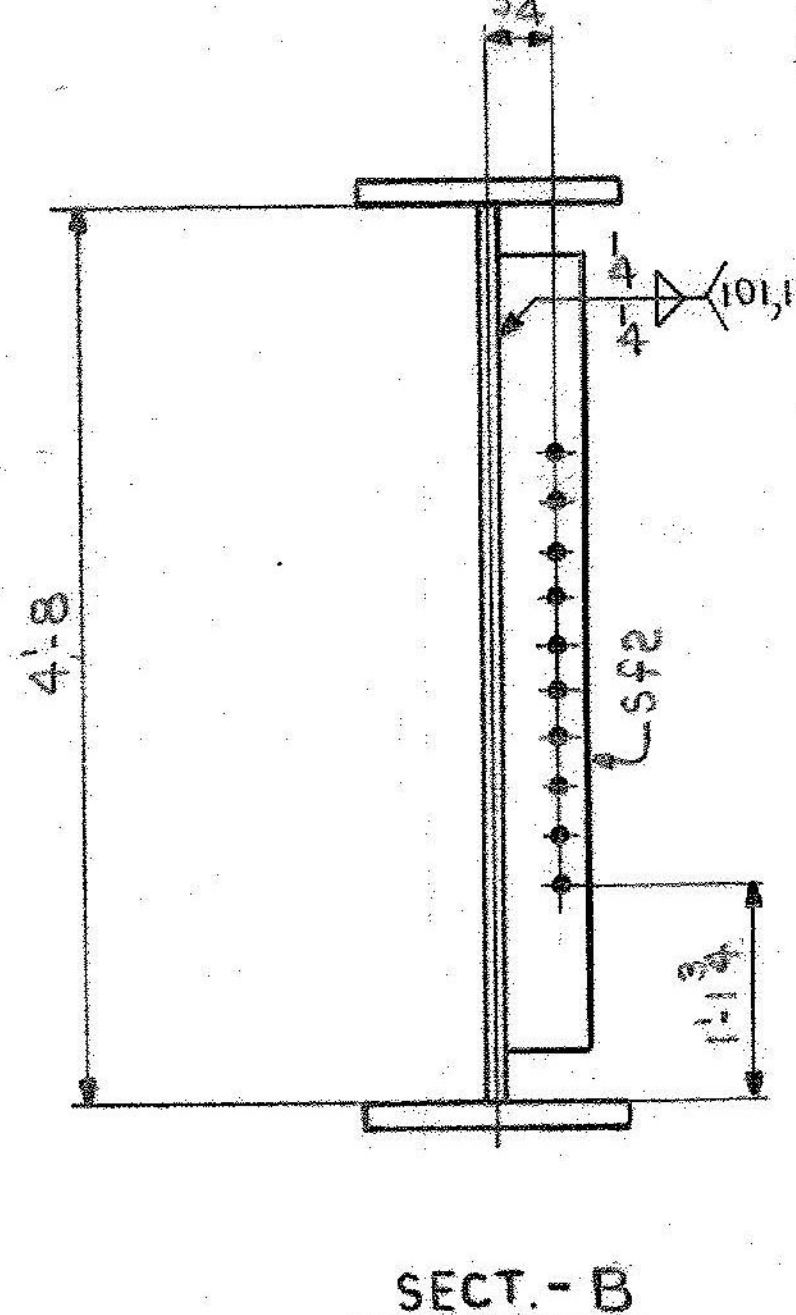
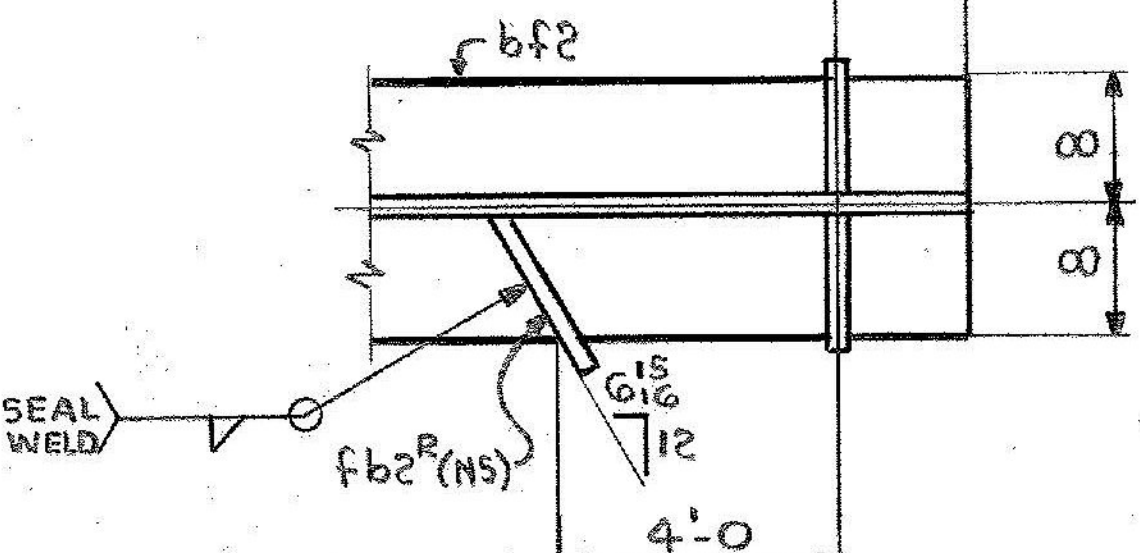
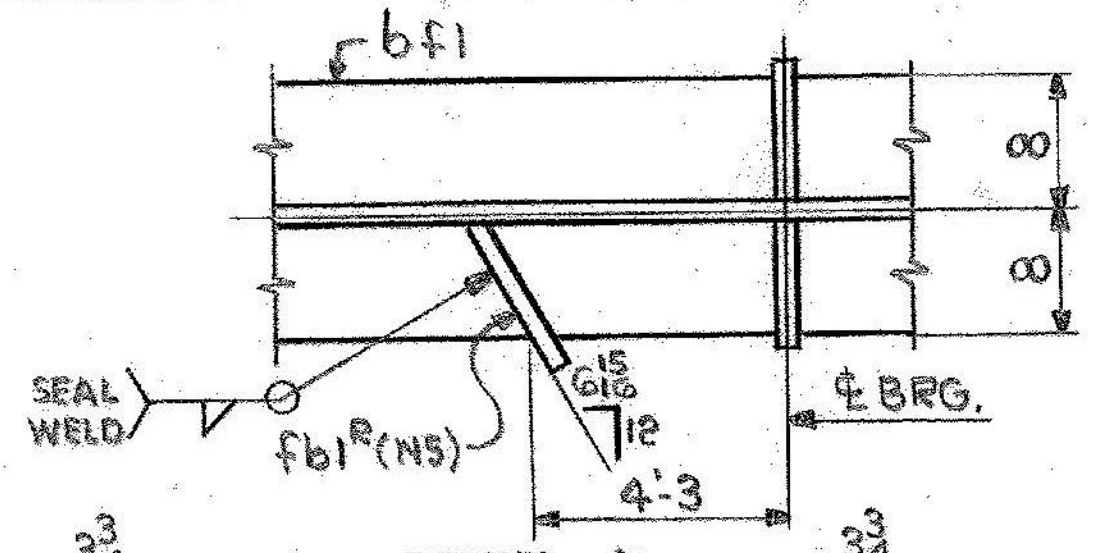
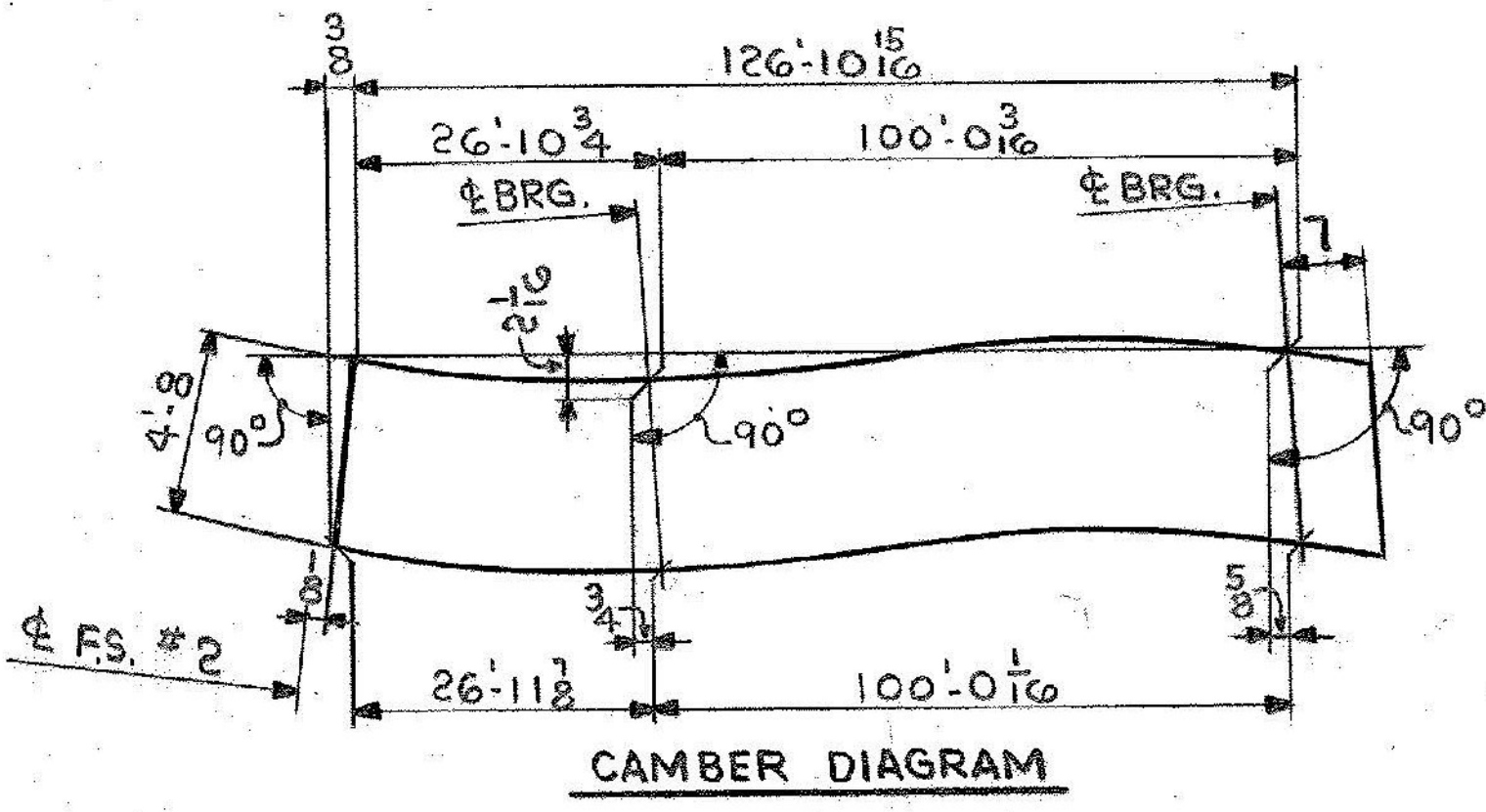


ONE GIRDER - G12C
 FOR GIRDER STANDARD DETAILS SEE DWG. 52-2.
 FOR WEB & FLG. & CUTTING & ASSEMBLY SEE DWG. 52-1.



DIMENSION (X)	
1'-6	65'-6
5'-6	69'-6
9'-6	73'-6
13'-6	77'-6
17'-6	81'-6
21'-6	85'-6
25'-6	89'-6
29'-6	93'-6
33'-6	97'-6
37'-6	101'-6
41'-6	105'-6
45'-6	109'-6
49'-6	113'-6
53'-6	117'-6
57'-6	121'-6
61'-6	125'-6



SHIP		BILL OF MATERIAL		JOB NO.		DRAWING NO.		REV.	
				4-44		52-20		△	
MARK	NO.	MARK	SHAPE	LENGTH	WT.	ITEM NO.	WT.	REMARKS	
G12C	ONE		GIRDER						
	1	WP1	R 3/8 x 57 1/16	63 9 2	57 1/2 x 27 0	1	C	CVN	
	1	WP2	R 3/8 x 56 1/16	63 9 16	57 1/2 x 27 0	1	B	CVN	
	1	t f1	R 1 3/4 x 10	47 0	1 3/4 x 10	1	H	CVN	
	1	t f2	R 3/8 x 10	80 5 15/16	1 3/4 x 10	1	E	CVN	
	1	b f1	R 1 3/4 x 10	47 0	1 3/4 x 10	1	H	CVN	
	1	b f2	R 3/8 x 10	80 6 15/16	1 3/4 x 10	1	G	CVN	
	1	b s1	R 3/4 x 8	4 8	3 5/8 x 8	2	B	95	
	1	b s2	R 3/4 x 8	4 8	3 5/8 x 8	2	B	95	
	1	b s3	R 3/4 x 8	4 8	3 5/8 x 8	2	B	95	
	1	b s10	R 3/4 x 8	4 8	10'0	2	B	95	
	4	s f2	R 5/8 x 5	4 2	10 3/16 x 2 1/2	2	C	177	
	1	f b1	R 1/4 x 3 3/4	0 10 3/8	3/4	2	G	3	
	1	f b2	R 1/4 x 2 3/8	0 10 3/8	3/4	2	G	2	

IT. NO. 506.91 BR. NO. 6 PROJ. NO. F020-1(10)

FOR APPROVAL FOR FILES & FIELD

STEEL: ASTM. A36 A572 GR1 A588 GR1 Unless Noted

WELDING ELECTRODE: E70 See Welding Proc. None

SHOP CONN: Bolted Welded None

FIELD CONN: Bolted Welded None

HOLES: 13/16 15/16 Unless Noted None

PAINT: Shopcoat Galt. After Fab. As Noted

SPECIAL PAINT: NONE

SPECIAL CLEANING: Blast Clean None SSPC-SP6

GIRDER - G12C

APPROVED: 2-1-85
 PRINT DIST.
 7 12-14-84 APP.
 8 2-26-85 FAB.
 ORIG 3-26-86 VAT

Bancroft & Martin Inc
 South Portland, Maine 04106

JOB: U.S. ROUTE 4 E.B. OVER OTTER CREEK
 RUTLAND, VERMONT

CUSTOMER: EARTH CONSTRUCTION
 DESIGNER: STATE OF VERMONT, AGENCY OF TRANS.

REV. △	ORDER NO.	JOB NO.	DRAWING NO.	REV.
CHECKED RW 12-19-84		4-44	52-20	△
DRAWN DW 11-30-84				