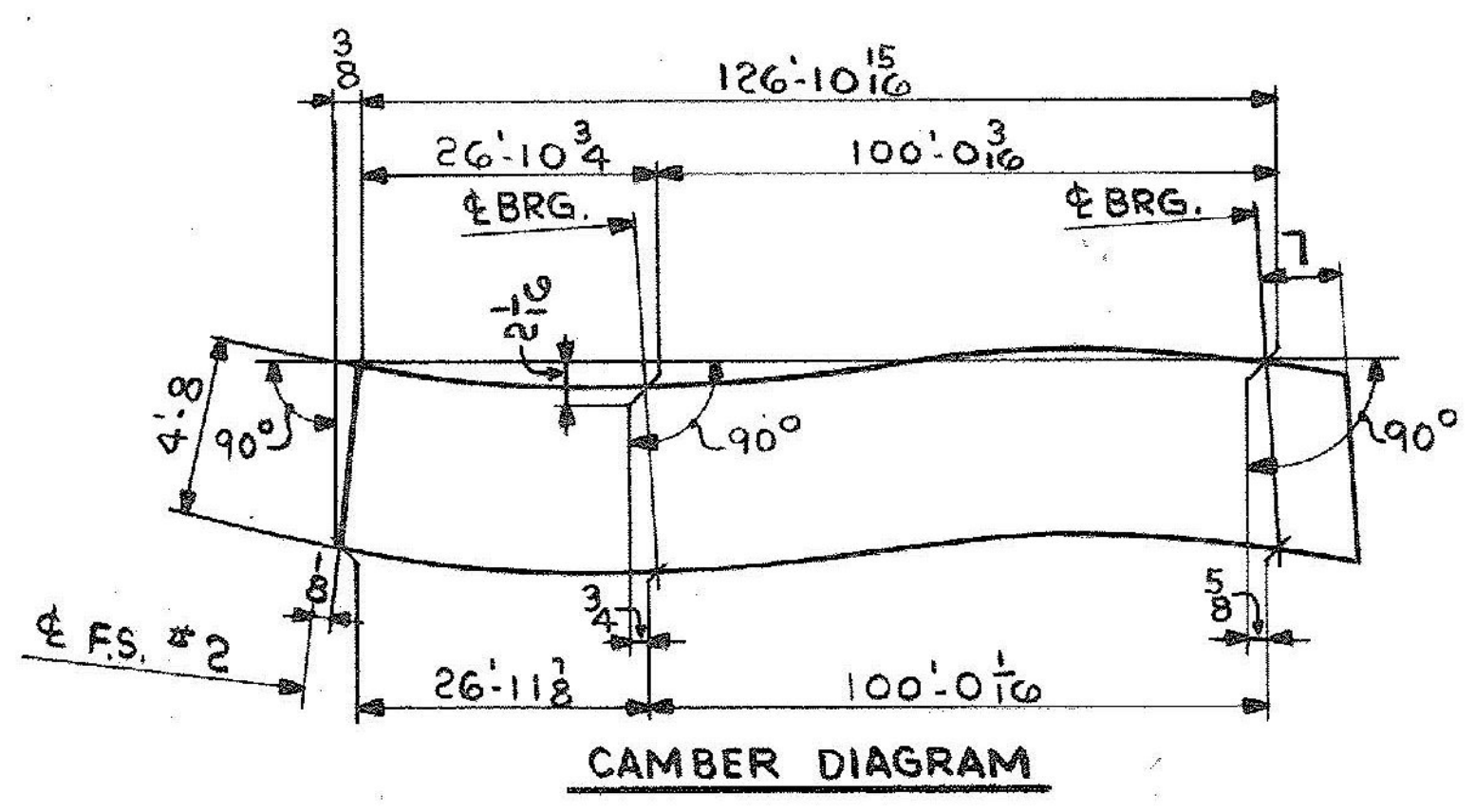
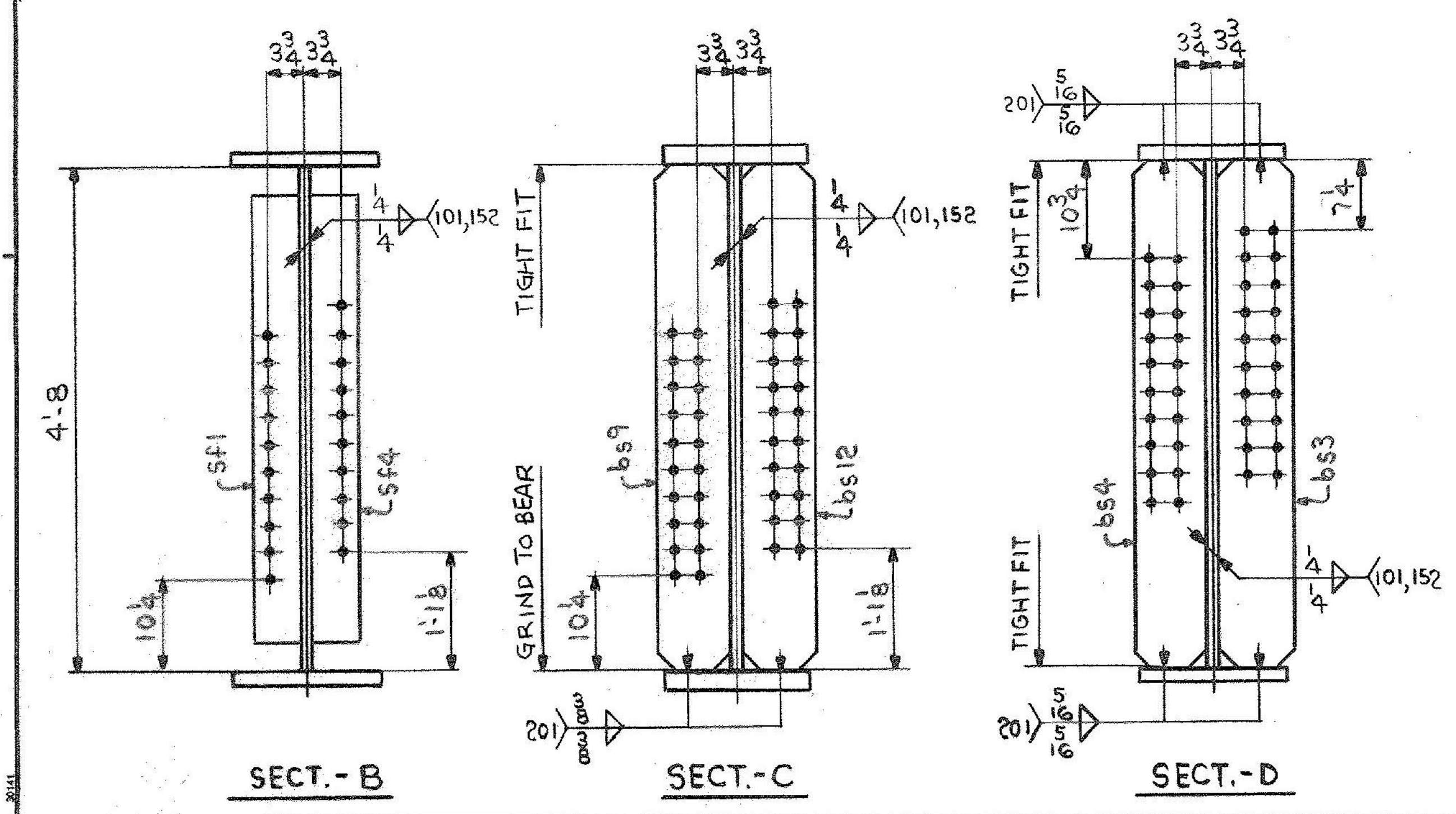


ONE-GIRDER-GIIC
 FOR GIRDER STANDARD DETAILS SEE DWG. 52-2.
 FOR WEB & FLG. R CUTTING & ASSEMBLY SEE DWG. 52-1.



SHIP		BILL OF MATERIAL				JOB NO.		DRAWING NO.		REV.
GIIC ONE		GIRDER				4-44		52-19		△
MARK	NO.	MARK	SHAPE	LENGTH	WT.	ITEM	WT	REMARKS		
	1	WP1	R 5/8 x 57 1/16	63 9 2	57 1/2 x 64 0	1	C	CVN		
	1	WP2	R 5/8 x 56 1/16	63 9 1/16	57 1/2 x 64 0	1	B	CVN		
	1	tf1	R 1 3/4 x 16	47 0	10 47 2	1	H	4478 CVN		
	1	tf2	R 1 3/4 x 16	80 5 1/16	10 80 10	1	F	3885		
	1	bf1	R 1 3/4 x 16	47 0	10 47 2	1	I	4478		
	1	bf2	R 1 3/4 x 16	80 6 1/16	10 80 10	1	G	3885 CVN		
	1	bs3	R 3/4 x 8	4 8	6	3	B	95		
	1	bs4	R 3/4 x 8	4 8	6	3	B	95		
	1	bs9	R 3/4 x 8	4 8	35" x	3	B	95		
	1	bs12	R 3/4 x 8	4 8	10'0"	3	B	95		
	4	SF1	R 5/8 x 5	4 2	10-31738	8	C	177		
	4	SF4	R 5/8 x 5	4 2	10-31738	8	C	177		
								32553 #		

IT. NO. 506.91 BR. NO. 6 PROJ. NO. F020-1(10)

FOR APPROVAL | **FOR FILES & FIELD**

STEEL: ASTM. A36 A572 GR1 A588 GR1 Unless Noted

WELDING ELECTRODE: E70 See Welding Proc. None

SHOP CONN: Bolted Welded None

FIELD CONN: Bolted Welded None

HOLES: 13/16 15/16 Unless Noted None

PAINT: None Shopcoat Galv. After Fab. As Noted

SPECIAL PAINT: NONE

SPECIAL CLEANING: Blast Clean None SSPC-SP6

GIRDER - GIIC

APPROVED: 2-1-85
 PRINT DIST.
 7 12-14-84 APP.
 8 2-26-85 FAB.
 ORIG 3-26-86 VAT

Pancroft & Martin Inc.
 South Portland, Maine 04106

JOB: U.S. ROUTE 4 E.B. OVER OTTER CREEK
 RUTLAND, VERMONT

CUSTOMER: EARTH CONSTRUCTION
 DESIGNER: STATE OF VERMONT, AGENCY OF TRANS.

REV. △		ORDER NO.	JOB NO.	DRAWING NO.	REV.
CHECKED	RW 12-13-84		4-44	52-19	△
DRAWN	DW 11-30-84				