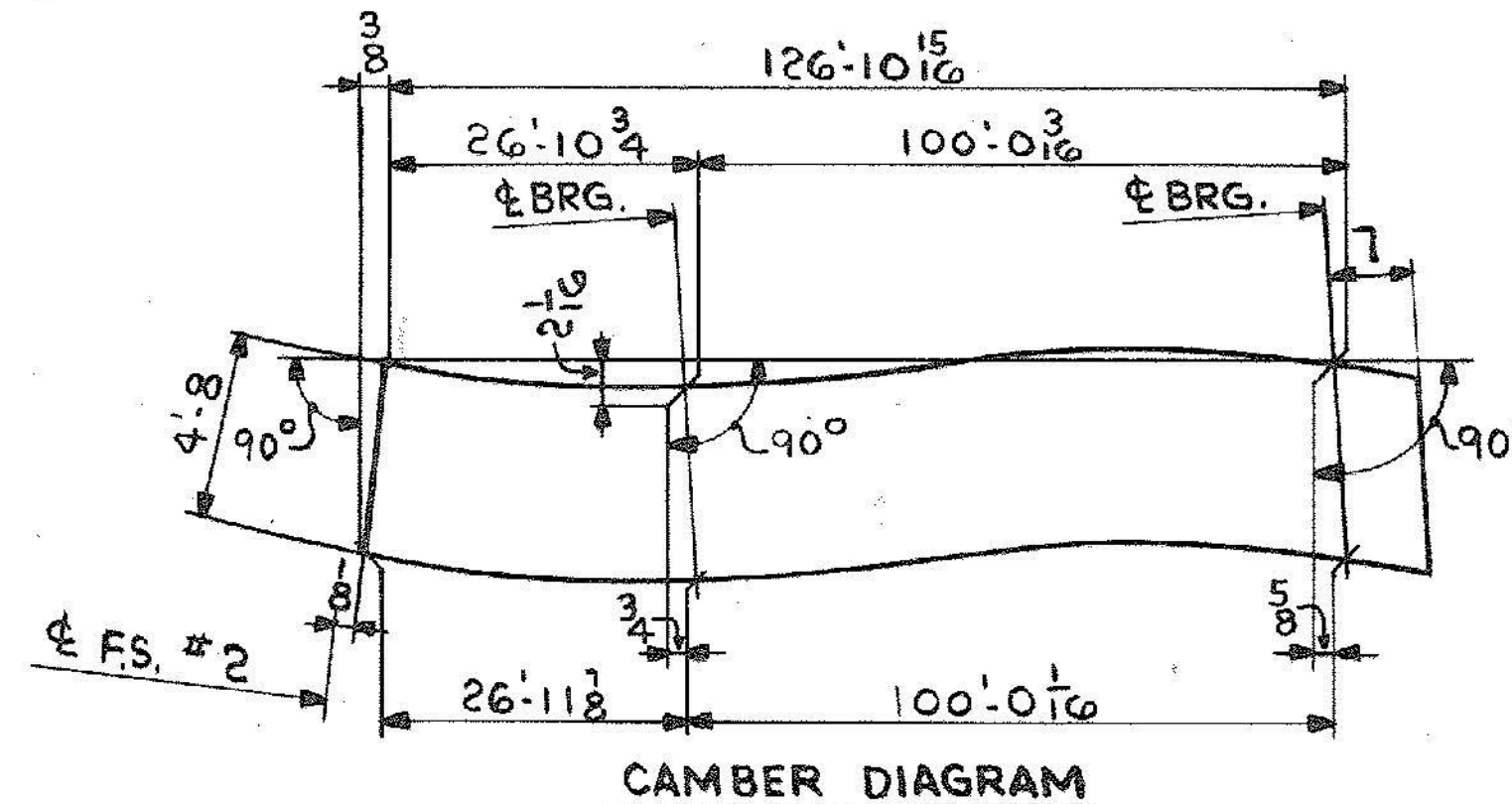
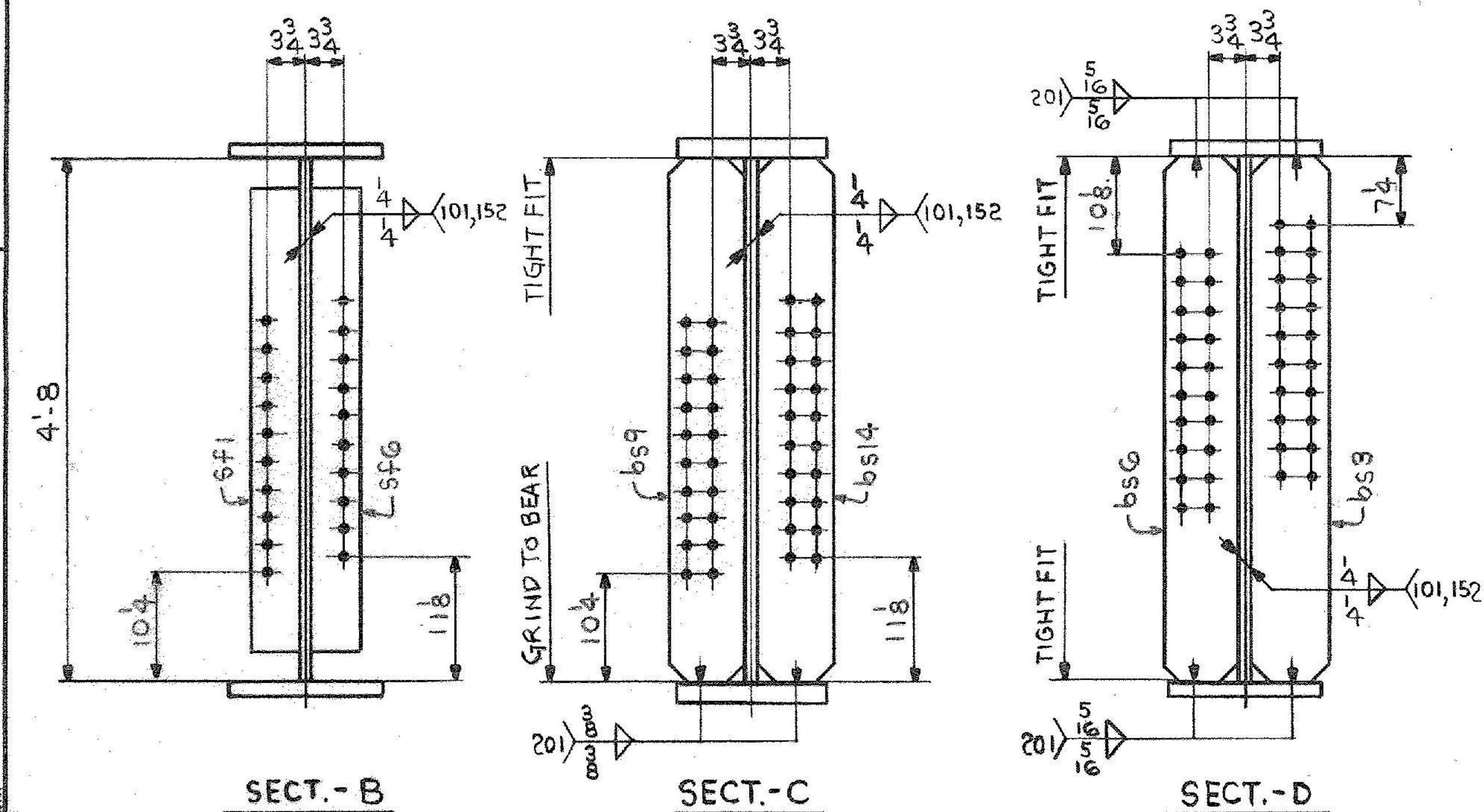


**ONE-GIRDER-GIOC**  
 FOR GIRDER STANDARD DETAILS SEE DWG. 52-2.  
 FOR WEB & FLG. & CUTTING & ASSEMBLY SEE DWG. 52-1.



SHIP		BILL OF MATERIAL		JOB NO.		DRAWING NO.		REV.
				4-44		52-18		△
MARK	NO.	MARK	SHAPE	LENGTH	WT.	ITEM NO.	WT.	REMARKS
GIOC	ONE		GIRDER					
	1	WP1	R 5/8 x 57 1/16	63 9 1/2	28 1/2 x 64 0	1 C		CVN
	1	WP2	R 5/8 x 56 1/16	63 9 1/2	58 1/2 x 64 0	1 B		CVN
	1	tf1	R 1 3/4 x 16	47 0	1 9 1/2	1 H		4478 CVN
	1	tf2	R 3/8 x 16	80 5 1/8	1 9 1/2	1 F		3835
	1	bf1	R 1 3/4 x 16	47 0	1 9 1/2	1 H		4478
	1	bf2	R 3/8 x 16	80 6 1/8	1 9 1/2	1 F		3839 CVN
	1	bs3	R 3/4 x 8	4 8	6 0	2 B		95
	1	bs6	R 3/4 x 8	4 8	35	2 B		95
	1	bs9	R 3/4 x 8	4 8	X	2 B		95
	1	bs14	R 3/4 x 8	4 8	10 0	2 B		95
	4	sf1	R 5/8 x 5	4 2	20-31739	2 C		177
	4	sf6	R 5/8 x 5	4 2	27 0	2 C		177
								32553 #

IT. NO. 506.91 BR. NO. 6 PROJ. NO. F020-1(10)

**FOR APPROVAL FOR FILES & FIELD**

STEEL: ASTM.  A36  A572 GR1  A572 GR1  Unless Noted

WELDING ELECTRODE:  E70  See Welding Proc.  None

SHOP CONN:  Bolted  Welded  None

FIELD CONN:  Bolted  Welded  None

HOLES:  13/16  15/16  Unless Noted  None

PAINT:  None  Shopcoat  Galv. After Fab.  As Noted

SPECIAL PAINT: NONE

SPECIAL CLEANING:  Blast Clean  None  SSPC-SP6

**GIRDER - GIOC**

APPROVED: 2-1-85

PRINT DIST. 7 12-14-84 APP. 8 2-26-85 FAB.

ORIG 3-20-86 F&F. VAT

**Pancroft & Martin Inc.**  
 South Portland, Maine 04106

JOB: U.S. ROUTE 4 E.B. OVER OTTER CREEK RUTLAND, VERMONT

CUSTOMER: EARTH CONSTRUCTION

DESIGNER: STATE OF VERMONT, AGENCY OF TRANS.

ORDER NO. JOB NO. DRAWING NO. REV.

REV. △ CHECKED DW 12-13-84 DRAWN DW 11-30-84 4-44 52-18 △