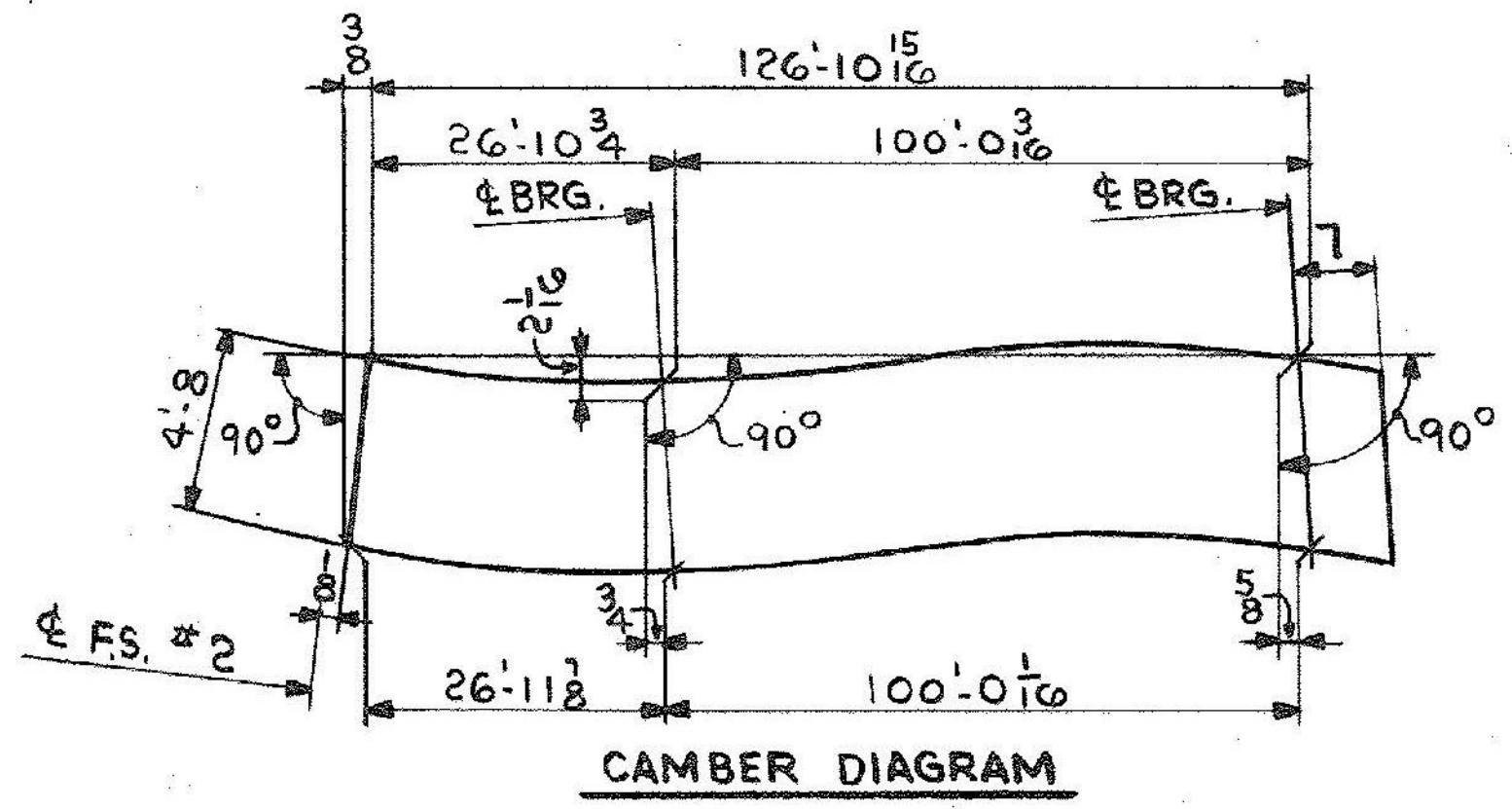
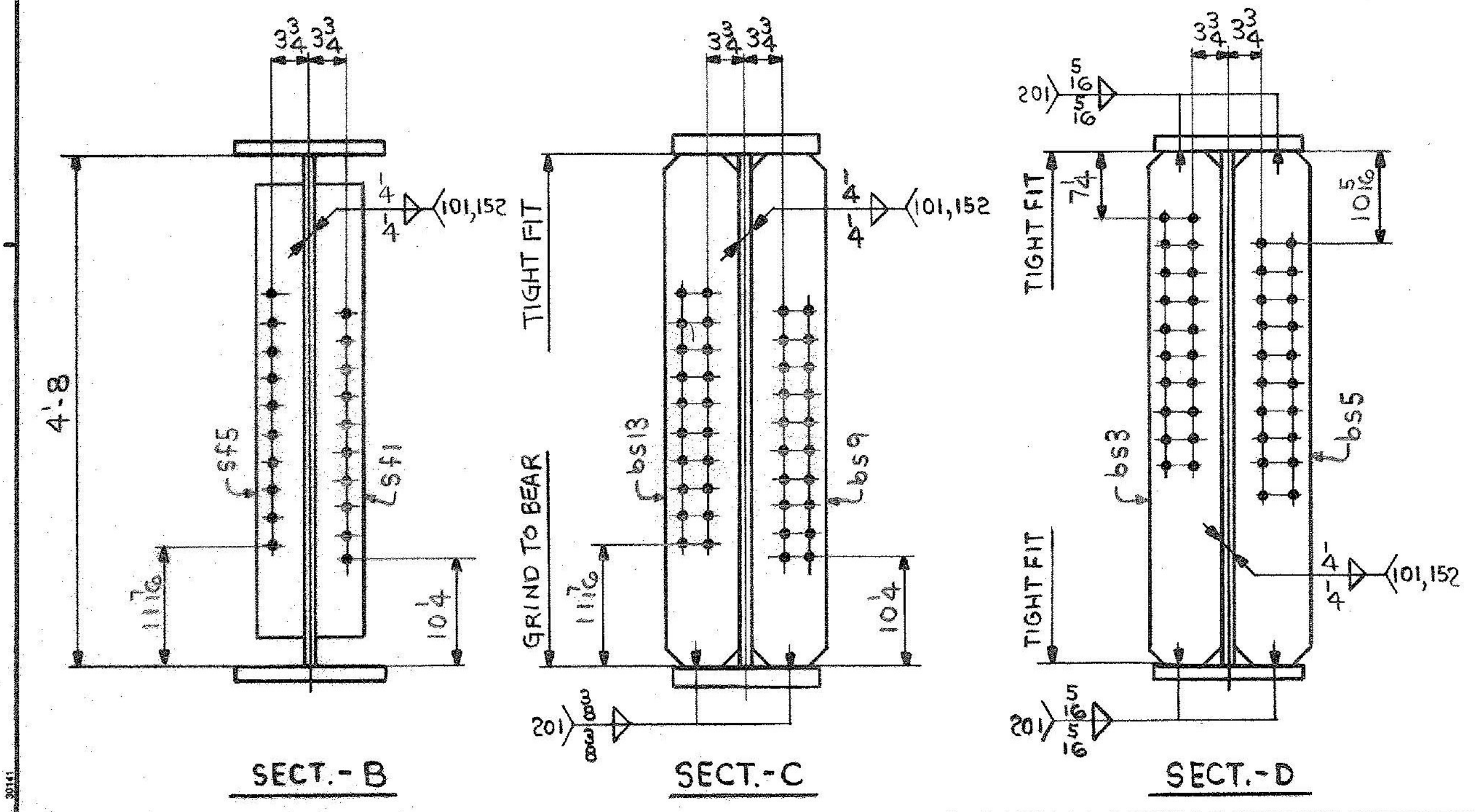


ONE-GIRDER - G8C
 FOR GIRDER STANDARD DETAILS SEE DWG. 52-2.
 FOR WEB & FLG. R CUTTING & ASSEMBLY SEE DWG. 52-1.



SHIP		BILL OF MATERIAL				JOB NO.	DRAWING NO.	REV.
G8C		ONE	GIRDER			4-44	52-16	△
MARK	NO.	MARK	SHAPE	LENGTH	WT.	ITEM	WT.	REMARKS
	1	WP1	R 5/8 x 57 1/16	63 9 2	58 1/2 x 2 1/2	1	CVN	
	1	WP2	R 5/8 x 56 1/16	63 9 16	58 1/2 x 2 1/2	1	CVN	
	1	tf1	R 1 3/4 x 16	47 0	1 1/2 x 2	1	CVN	
	1	tf2	R 1 3/4 x 16	80 5 1/16	1 1/2 x 2	1	CVN	
	1	bf1	R 1 3/4 x 16	47 0	1 1/2 x 2	1	CVN	
	1	bf2	R 1 3/4 x 16	80 6 1/16	1 1/2 x 2	1	CVN	
	1	bs3	R 3/4 x 8	4 8	6	2	95	
	1	bs5	R 3/4 x 8	4 8	6	2	95	
	1	bs9	R 3/4 x 8	4 8	25 x	2	95	
	1	bs13	R 3/4 x 8	4 8	10 x	2	95	
	4	SF1	R 5/8 x 5	4 2	10 3/16 x 2 1/2	2	177	
	4	SF5	R 5/8 x 5	4 2	10 3/16 x 2 1/2	2	177	

IT. NO. 506.91 BR. NO. 6 PROJ. NO. FO20-1(10)

FOR APPROVAL **FOR FILES & FIELD**

STEEL: ASTM A36 A572 GR1 A588 GR1 Unless Noted

WELDING ELECTRODE: E70 See Welding Proc. None

SHOP CONN: Bolted Welded None

FIELD CONN: Bolted Welded None

HOLES: 13/16 15/16 Unless Noted None

PAINT: None Shopcoat Galv. After Fab. As Noted

SPECIAL PAINT: NONE

SPECIAL CLEANING: Blast Clean None SSPC-SP6

GIRDER - G8C

APPROVED: 2-1-85
 PRINT DIST.
 7 12-19-84 APP.
 8 2-26-85 FAB.
 F&F
 ORIG 3-26-86 VAT

Percraft & Martin Inc.
 South Portland, Maine 04106

JOB: U.S. ROUTE 4 E.B. OVER OTTER CREEK
 RUTLAND, VERMONT

CUSTOMER: EARTH CONSTRUCTION

DESIGNER: STATE OF VERMONT, AGENCY OF TRANS.

REV.	△	ORDER NO.	JOB NO.	DRAWING NO.	REV.
CHECKED				4-44	52-16
DRAWN					