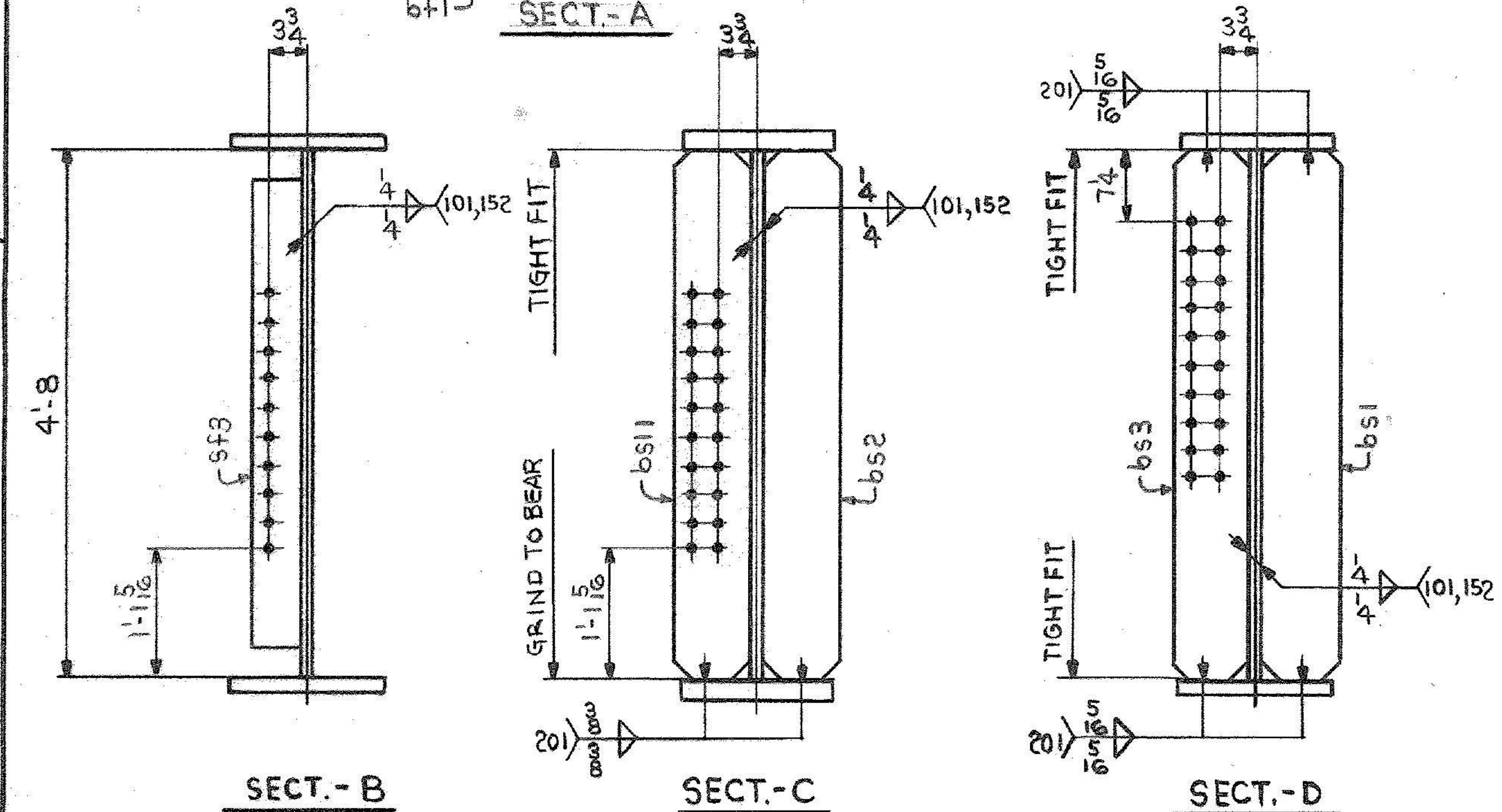
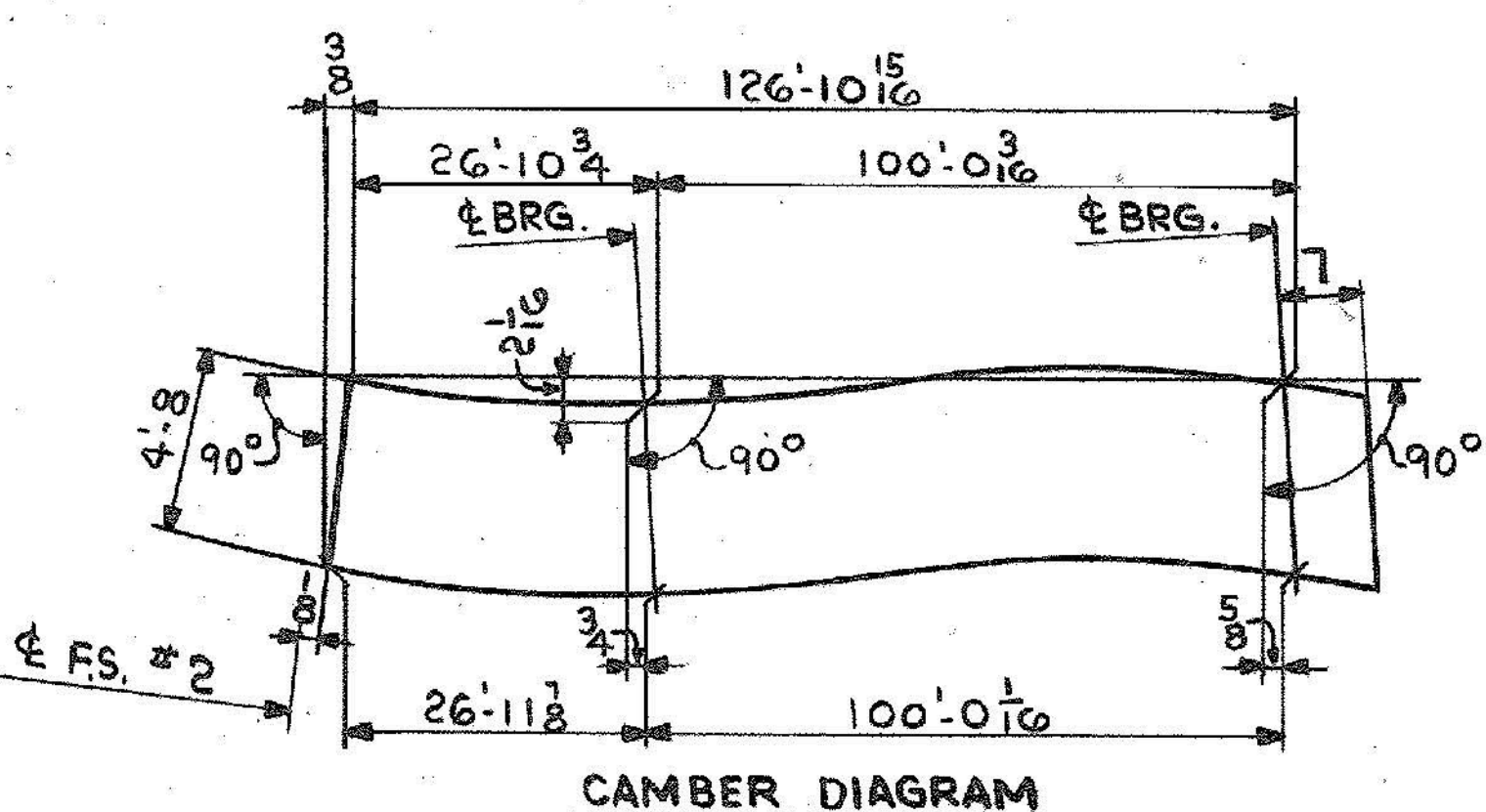


ONE GIRDER - G7C
 FOR GIRDER STANDARD DETAILS SEE DWG. 52-2.
 FOR WEB & FLG. & CUTTING & ASSEMBLY SEE DWG. 52-1.



DIMENSION (X)	
1'-6	65'-6
5'-6	69'-6
9'-6	73'-6
13'-6	77'-6
17'-6	81'-6
21'-6	85'-6
25'-6	89'-6
29'-6	93'-6
33'-6	97'-6
37'-6	101'-6
41'-6	105'-6
45'-6	109'-6
49'-6	113'-6
53'-6	117'-6
57'-6	121'-6
61'-6	125'-6



SHIP		BILL OF MATERIAL		JOB NO.		DRAWING NO.		REV.
				4-44		52-15		△
MARK	NO.	MARK	SHAPE	LENGTH	WT.	ITEM NO.	WT.	REMARKS
G7C	ONE		GIRDER					
	1	WP1	R 3/4 x 57 1/16	63 9 2	58 1/2 x 21 0	1		CVN
	1	WP2	R 3/8 x 56 1/16	63 9 1/2	58 1/2 x 21 0	1		CVN
	1	tfl	R 1 3/4 x 16	47 0	1 1/2 x 11 2	1		CVN
	1	tf2	R 7/8 x 16	80 5 1/2	1 1/2 x 10	1		CVN
	1	bfl	R 1 3/4 x 16	47 0	1 1/2 x 11 2	1		CVN
	1	bfs	R 7/8 x 16	80 6 1/2	1 1/2 x 9	1		CVN
	1	bs1	R 3/4 x 8	4 8	3/4 x 8	2		95
	1	bs2	R 3/4 x 8	4 8	3/4 x 8	2		95
	1	bs3	R 3/4 x 8	4 8	3/4 x 8	2		95
	1	bs1	R 3/4 x 8	4 8	10 0	2		95
	4	sf3	R 5/8 x 5	4 2	5/8 x 5	2		177
	1	fb1	R 1/2 x 3 3/4	0 10 3/8	3/4	2		3
	1	fb2	R 1/2 x 2 3/4	0 10 3/8	3/4	2		2
								323B/#

IT. NO. 506.91 BR. NO. 6 PROJ. NO. F020-1(10)

FOR APPROVAL **FOR FILES & FIELD**

STEEL: ASTM. A36 A572 GRI A588 GRI Unless Noted

WELDING ELECTRODE: E70 See Welding Proc. None

SHOP CONN: Bolted Welded None

FIELD CONN: Bolted Welded None

HOLES: 13/16 15/16 Unless Noted None

PAINT: None Shopcoat Galv. After Fab. As Noted

SPECIAL PAINT: NONE

SPECIAL CLEANING: Blast Clean None 55PC-SP6

GIRDER - G7C

APPROVED: 2-1-85
 PRINT DIST.
 7 12-14-84 APP.
 8 2-26-85 FAB.
 ORIG 3-26-86 VAT

Bancroft & Martin Inc
 South Portland, Maine 04106

JOB: U.S. ROUTE 4 E.B. OVER OTTER CREEK
 RUTLAND, VERMONT

CUSTOMER: EARTH CONSTRUCTION
 DESIGNER: STATE OF VERMONT, AGENCY OF TRANS.

REV. Δ
 CHECKED RW 12-13-84
 DRAWN DW 11-30-84

ORDER NO. JOB NO. DRAWING NO. REV.
 4-44 52-15 Δ