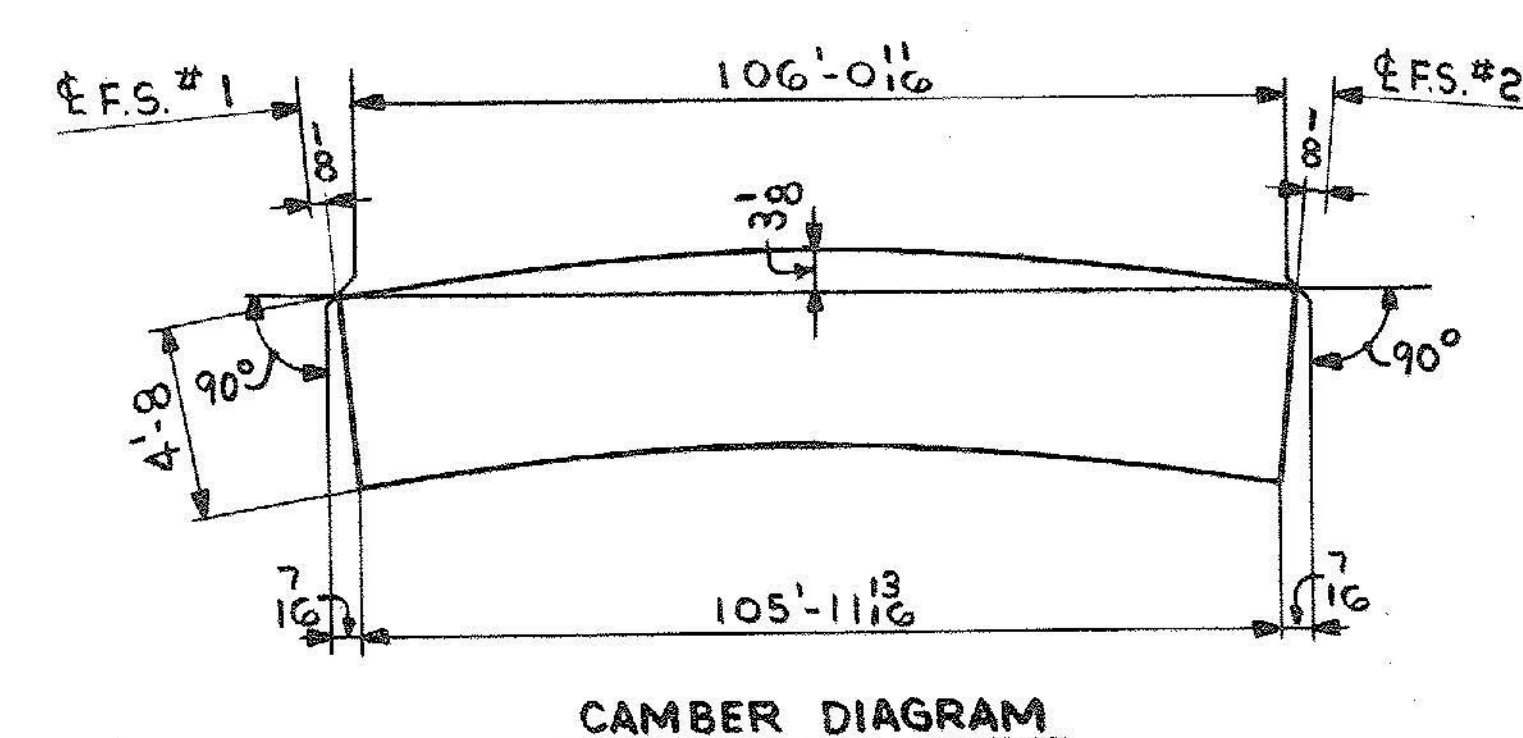
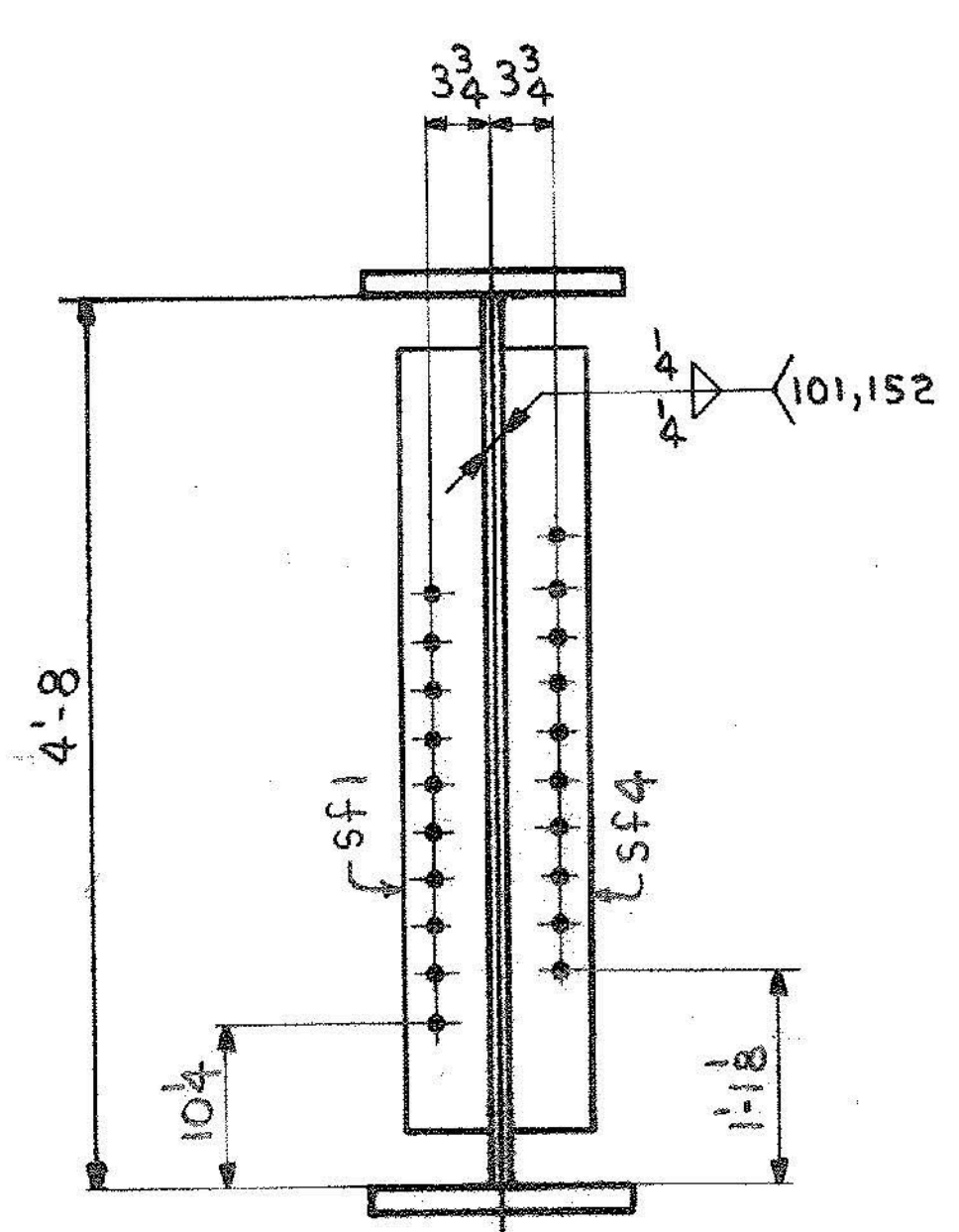


ONE-GIRDER-G11B
 FOR GIRDER STANDARD DETAILS SEE DWG. 52-2.
 FOR WEB & FLG. & CUTTING & ASSEMBLY SEE DWG. 52-1.



SHIP		BILL OF MATERIAL		JOB NO.		DRAWING NO.		REV.
				4-44		52-13		△
MARK	NO.	MARK	SHAPE	LENGTH	WT.	ITEM NO.	WT.	REMARKS
G11B	ONE		GIRDER					
	1	WPI	PL 5/8 x 598	106 0 11/16	106' x 11/16"	10	12627	CVN
	1	tf1	PL 3/8 x 16	106 0 11/16	106' x 1/4"	1	9052	
	1	bfl	PL 1/4 x 16	105 11 13/16	105' x 1/4"	1	K7213	CVN
	4	sp1	PL 1/2 x 51 1/2	2 1 1/2	2' x 1 1/2"	1	745	CVN *
	4	sp2	PL 3/4 x 16	2 7 1/2	2' x 7 1/2"	1	P429	CVN *
	8	sp3	PL 3/4 x 6 1/2	2 7 1/2	2' x 6 1/2"	1	Q348	CVN *
	2	fp1	PL 3/8 x 16	1 3 3/8	1' x 3 3/8"	1	R124	4.43 IR *
	2	fp2	PL 1/2 x 16	1 3 3/8	1' x 3 3/8"	1	S71	4.43 IS *
	4	sf1	PL 3/8 x 5	4 2	4' x 2"	1	B/C 177	
	4	sf4	PL 3/8 x 5	4 2	4' x 2"	1	B/C 177	
								26965 # SHIPPING WEIGHT
								* PAY WEIGHT
	4		PL 1/2 x 51	2 1				723
	4		PL 3/4 x 16	2 7				422
	8		PL 3/4 x 6 1/2	2 7				343
	2		PL 3/8 x 16	1 3 3/8				122
	2		PL 1/2 x 16	1 3 3/8				70
								26926 # PAY WEIGHT

IT. NO. 506.91 BR. NO. 6 PROJ. NO. F020-1(10)

FOR APPROVAL | **FOR FILES & FIELD**

STEEL: ASTM. A36 A572 GR A588 GR Unless Noted

WELDING ELECTRODE: E70 See Welding Proc. None

SHOP CONN: Bolted Welded None

FIELD CONN: Bolted Welded None

HOLES: 13/16 1 1/8 Unless Noted None

PAINT: None Shopcoat Galv. After Fab. As Noted

SPECIAL PAINT: NONE

SPECIAL CLEANING: Blast Clean None SSPC-SP6

GIRDER-G11B

APPROVED: 2-1-85

PRINT DIST.			
7	12-14-84	APP.	
8	2-26-85	FAB.	
		FB.F.	
ORIG	3-26-86	VAT	

Brancroft & Martin Inc.
 South Portland, Maine 04106

JOB: U.S. ROUTE 4 E.B. OVER OTTER CREEK
 RUTLAND, VERMONT

CUSTOMER: EARTH CONSTRUCTION

DESIGNER: STATE OF VERMONT, AGENCY OF TRANS

REV.	△	ORDER NO.	JOB NO.	DRAWING NO.	REV.
CHECKED	RW	12-13-84		4-44	52-13
DRAWN	DW	11-30-84			