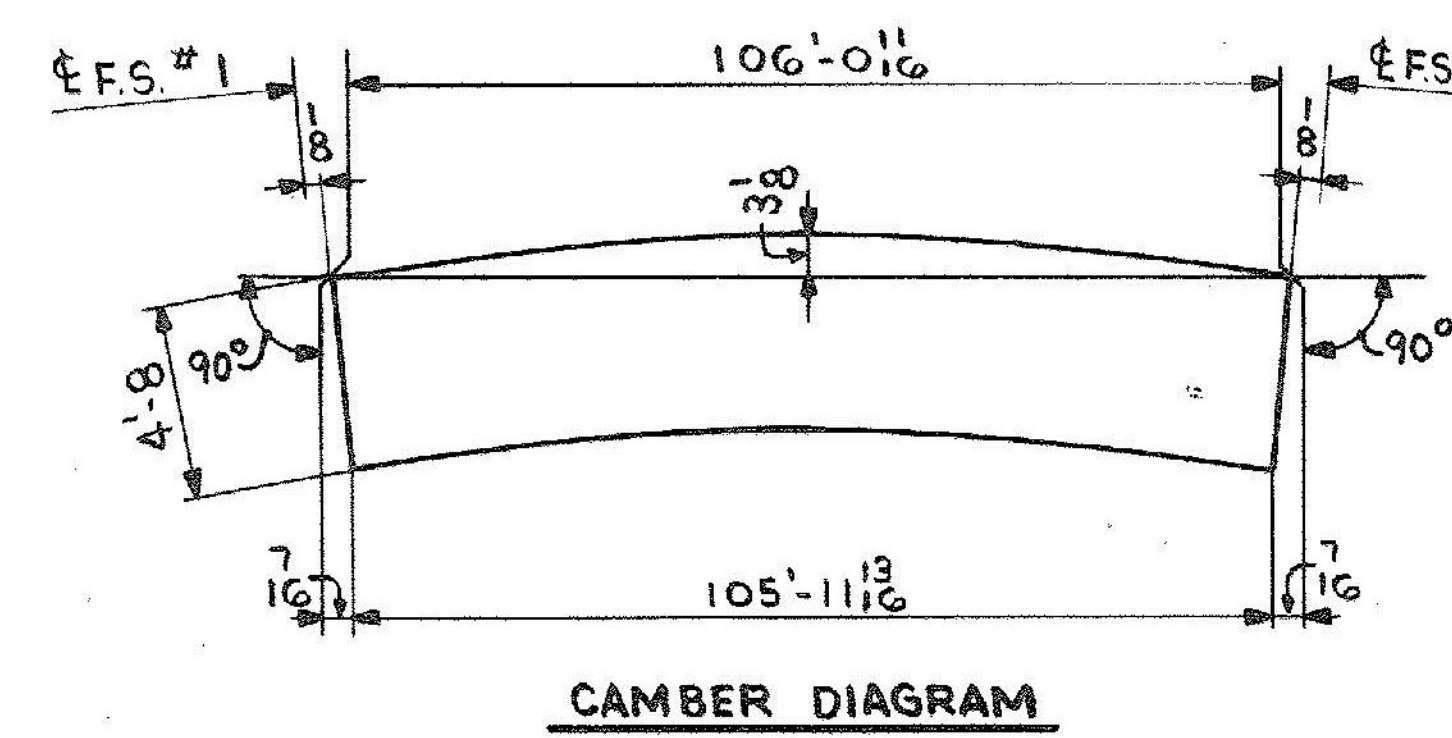
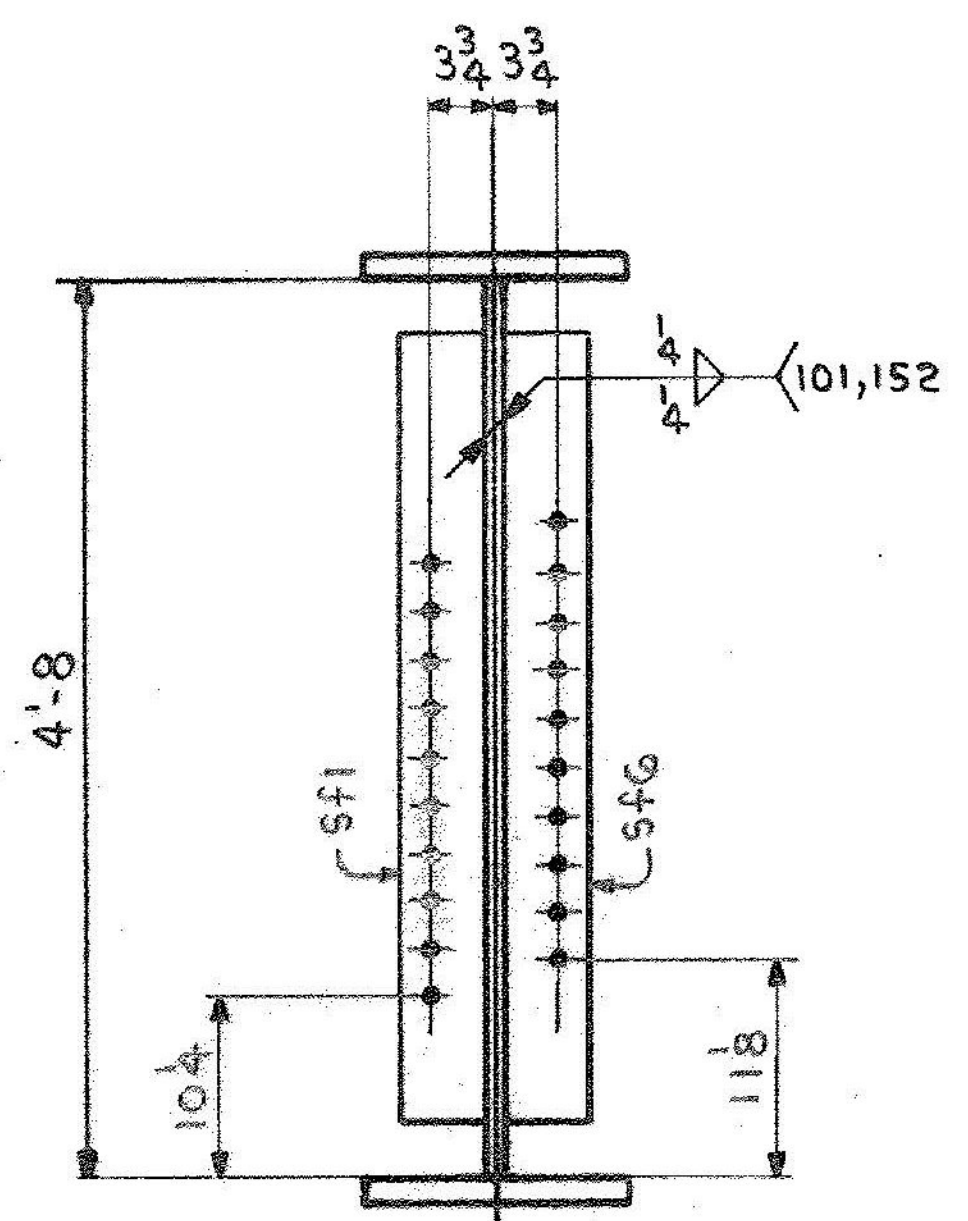


ONE-GIRDER-GIOB
 FOR GIRDER STANDARD DETAILS SEE DWG. 52-2.
 FOR WEB & FLG. & CUTTING & ASSEMBLY SEE DWG. 52-1.



SHIP		BILL OF MATERIAL		JOB NO.	DRAWING NO.	REV.
G10B ONE		GIRDER		4-44	52-12	△
MARK	NO.	MARK	SHAPE	LENGTH	WT.	REMARKS
	1	WPI	R 8 x 59 8	106' 0 1/16	106' 3	CVN
	1	tf1	R 8 x 16	106' 0 1/16	106' 4	CVN
	1	bfl	R 1 1/4 x 16	105' 11 1/16	106' 3	CVN
	4	sp1	R 1/2 x 51 2	2' 1 1/2	52' 51 1/2	CVN
	4	sp2	R 3/4 x 16	2' 7 1/2	6' 10 7/8	CVN
	8	sp3	R 3/4 x 6 1/2	2' 7 1/2	30' 32 1/8	CVN
	2	fp1	R 8 x 16	1' 3 3/8	12' 4	CVN
	2	fp2	R 2 x 16	1' 3 3/8	12' 4	CVN
	4	sf1	R 5/8 x 5	4' 2	177	
	4	sf6	R 5/8 x 5	4' 2	177	
* PAY WEIGHT						
	4	R 1/2 x 51	2	1	723	
	4	R 3/4 x 16	2	7	422	
	8	R 3/4 x 6 1/2	2	7	343	
	2	R 8 x 16	1	3 3/8	122	
	2	R 2 x 16	1	3 3/8	70	

IT. NO. 506.91 BR. NO. 6 PROJ. NO. F020-1(10)

FOR APPROVAL **FOR FILES & FIELD**

STEEL: ASTM. A36 A572 GR1 A588 GR1 Unless Noted

WELDING ELECTRODE: E70 See Welding Proc. None

SHOP CONN: Bolted Welded None

FIELD CONN: Bolted Welded None

HOLES: 13/16 15/16 Unless Noted None

PAINT: None Shopcoat Galv. After Fab. As Noted

SPECIAL PAINT: NONE

SPECIAL CLEANING: Blast Clean None SSPC-SP6

GIRDER-GIOB

APPROVED: 2-1-85
 PRINT DIST.
 7 12-14-84 APP.
 8 2-26-85 FAB.
 ORIG 3-26-86 VAT

Bancroft & Martin Inc.
 South Portland, Maine 04106

JOB: U.S. ROUTE 4 E.B. OVER OTTER CREEK
 RUTLAND, VERMONT

CUSTOMER: EARTH CONSTRUCTION

DESIGNER: STATE OF VERMONT, AGENCY OF TRANS

REV. △	ORDER NO.	JOB NO.	DRAWING NO.	REV.
CHECKED RW 12-13-84			4-44	52-12
DRAWN DW 11-30-84				