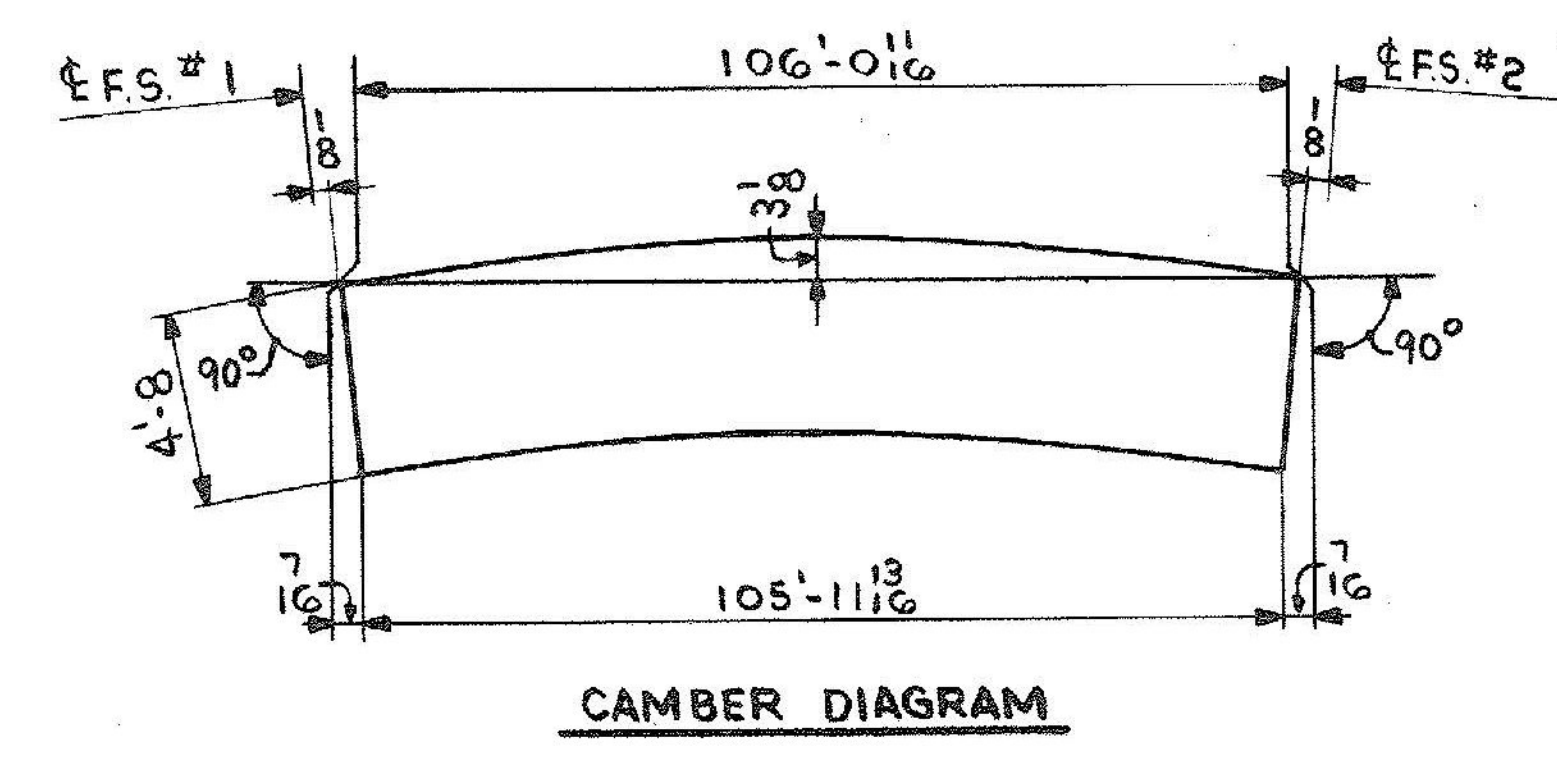
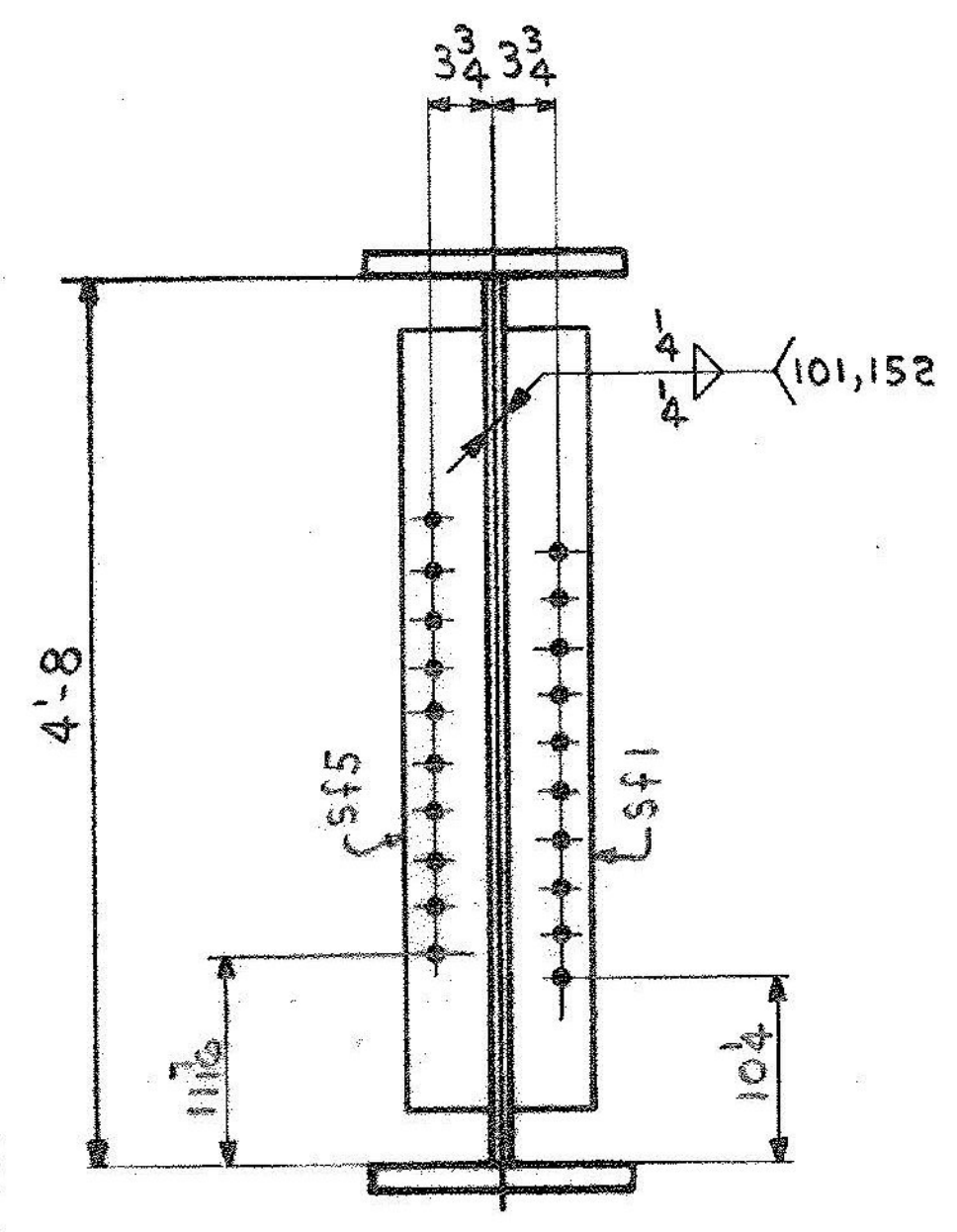


ONE-GIRDER - G8B
 FOR GIRDER STANDARD DETAILS SEE DWG. 52-2.
 FOR WEB & FLG. & CUTTING & ASSEMBLY SEE DWG. 52-1.



SHIP		BILL OF MATERIAL		JOB NO.		DRAWING NO.		REV.	
				4-44		52-10		A	
MARK	NO.	MARK	SHAPE	LENGTH	WT.	WT.	REMARKS		
G8B	ONE		GIRDER						
	1	wp1	R 5/8 x 59 1/2	106 0 1/16	106.3	106.3	CVN		
	1	tf1	R 3/4 x 16	106 0 1/16	106.3	106.3	5052		
	1	bfl	R 1 1/4 x 16	105 11 13/16	106.3	106.3	CVN		
	4	sp1	R 3/4 x 5 1/2	2 1 1/2	5.2	5.2	745 CVN	*	
	4	sp2	R 3/4 x 16	2 7 1/2	10.8	10.8	429 CVN	*	
	8	sp3	R 3/4 x 6 1/2	2 7 1/2	10.8	10.8	348 CVN	*	
	2	fp1	R 3/4 x 16	1 3 3/8	12.4	12.4	4-43 1R	*	
	2	fp2	R 3/4 x 16	1 3 3/8	7.1	7.1	4-43 1S	*	
	4	sf1	R 5/8 x 5	4 2	17.7	17.7			
	4	sf5	R 5/8 x 5	4 2	17.7	17.7			
269.26# SHIPPING WEIGHT									
* PAY WEIGHT									
	4		R 1/2 x 5 1/2	2 1	7.23	7.23			
	4		R 3/4 x 16	2 7	4.22	4.22			
	8		R 3/4 x 6 1/2	2 7	3.43	3.43			
	2		R 3/8 x 16	1 3 3/8	1.22	1.22			
	2		R 1/2 x 16	1 3 3/8	.70	.70			
269.26# PAY WEIGHT									

IT. NO. 506.91 BR. NO. 6 PROJ. NO. F020-1(10)

FOR APPROVAL **FOR FILES & FIELD**

STEEL: ASTM. A36 A572 GR A589 GR Unless Noted

WELDING ELECTRODE: E70 See Welding Proc. None

SHOP CONN: Bolted Welded None

FIELD CONN: Bolted Welded None

HOLES: 13/16 15/16 Unless Noted None

PAINT: None Shopcoat Galv. After Fab. As Noted

SPECIAL PAINT: NONE

SPECIAL CLEANING: Blast Clean None SSPC-SP6

GIRDER - G8B

APPROVED: 2-1-85
 PRINT DIST.
 7 12-14-84 APP.
 8 2-26-85 FAB.
 ORIG 3-26-86 VAT

Rancroft & Martin Inc.
 South Portland, Maine 04106

JOB: U.S. ROUTE 4 E.B. OVER OTTER CREEK
 RUTLAND, VERMONT

CUSTOMER: EARTH CONSTRUCTION
 DESIGNER: STATE OF VERMONT, AGENCY OF TRANS

REV. A		ORDER NO.	JOB NO.	DRAWING NO.	REV.
CHECKED	RW 12-19-84		4-44	52-10	A
DRAWN	DW 11-30-84				