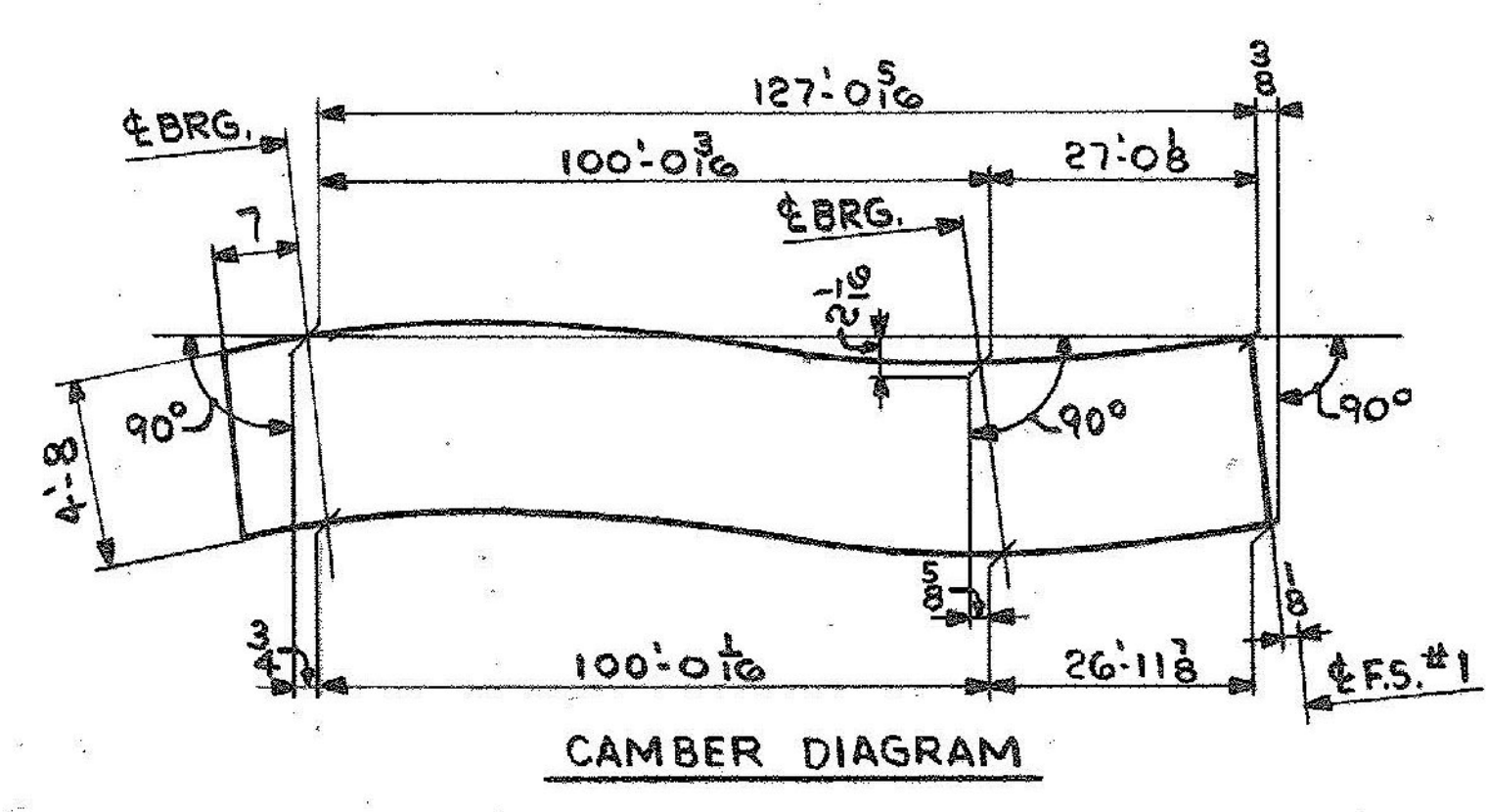
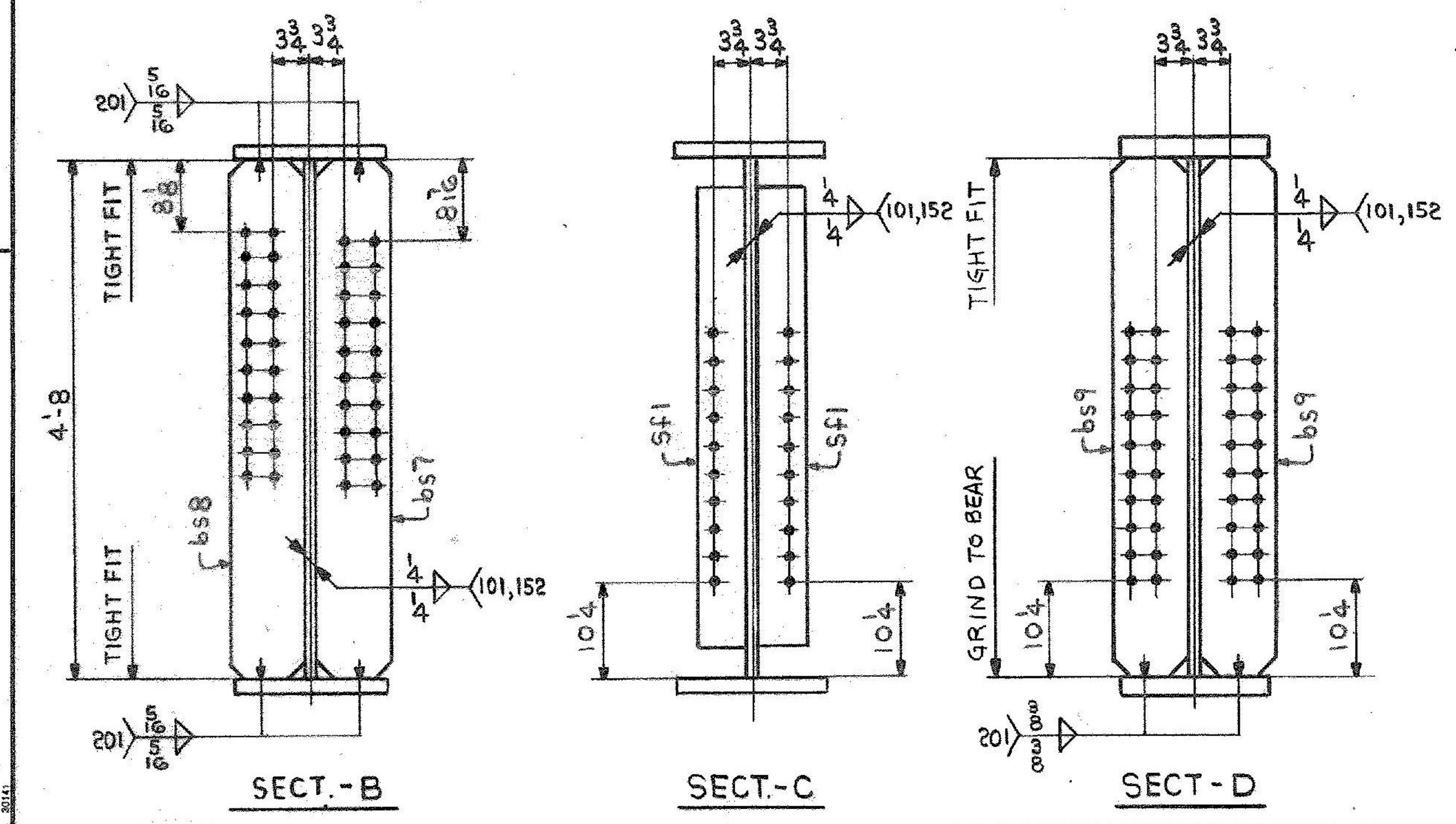


ONE GIRDER - G9A
 FOR GIRDER STANDARD DETAILS SEE DWG. 52-2.
 FOR WEB & FLG. R CUTTING & ASSEMBLY SEE DWG. 52-1.



SHIP		BILL OF MATERIAL				JOB NO.	DRAWING NO.	REV.
G9A ONE		GIRDER				4-44	52-5	△
MARK	NO.	MARK	SHAPE	LENGTH	WT.	ITEM NO.	REMARKS	
	1	WPI	R 5/8 x 56 1/2	63 10	572.5	1	B	CVN
	1	WP2	R 5/8 x 57 1/2	63 9 1/2	572.5	1	C	15194 CVN
	1	tf1	R 3/8 x 16	80 7 1/2	100.0	1	F	3840
	1	tf2	R 1 1/2 x 16	47 0	71.2	1	H	4478 CVN
	1	bf1	R 3/8 x 16	80 6 1/2	100.0	1	G	3829 CVN
	1	bf2	R 1 1/2 x 16	47 0	71.2	1	I	4478
	1	bs7	R 3/4 x 8	4 8	6.0	2	B	95
	1	bs8	R 3/4 x 8	4 8	35.0	2	B	95
	2	bs9	R 3/4 x 8	4 8	10.0	2	B	191
	8	Sf1	R 5/8 x 5	4 2	10.0	2	C	354
								32546#

IT. NO. 506.91 BR. NO. 6 PROJ. NO. F020-1(10)

FOR APPROVAL | **FOR FILES & FIELD**

STEEL: ASTM A36 A572 GR1 A588 GR1 Unless Noted

WELDING ELECTRODE: E70 See Welding Proc. None

SHOP CONN: Bolted Welded None

FIELD CONN: Bolted Welded None

HOLES: 13/16 15/16 Unless Noted None

PAINT: None Shopcoat Galv. After Fab. As Noted

SPECIAL PAINT: NONE

SPECIAL CLEANING: Blast Clean None 55PC-SP6

GIRDER - G9A

APPROVED: 2-1-85
 PRINT DIST.
 7 11-1-84 APP.
 8 2-26-85 FAB.
 ORIG. 3-26-86 VAT

Bancroft & Martin Inc.
 South Portland, Maine 04106

JOB: **U.S. ROUTE 4 E.B. OVER OTTER CREEK
 RUTLAND, VERMONT**

CUSTOMER: **EARTH CONSTRUCTION**

DESIGNER: **STATE OF VERMONT, AGENCY OF TRANS.**

REV. △				
CHECKED	RW	12-13-84		
DRAWN	DW	11-30-84		

4-44 52-5 △