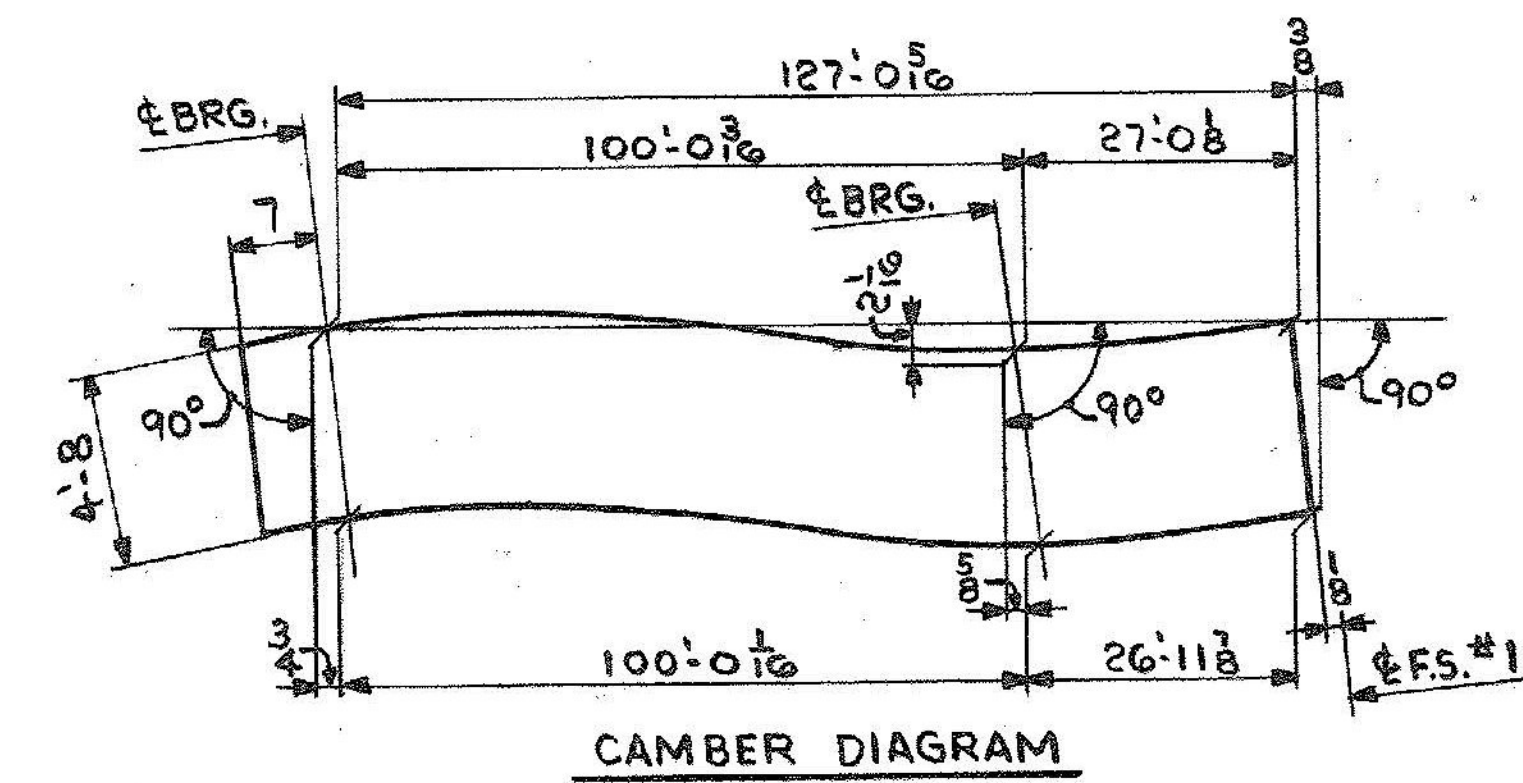
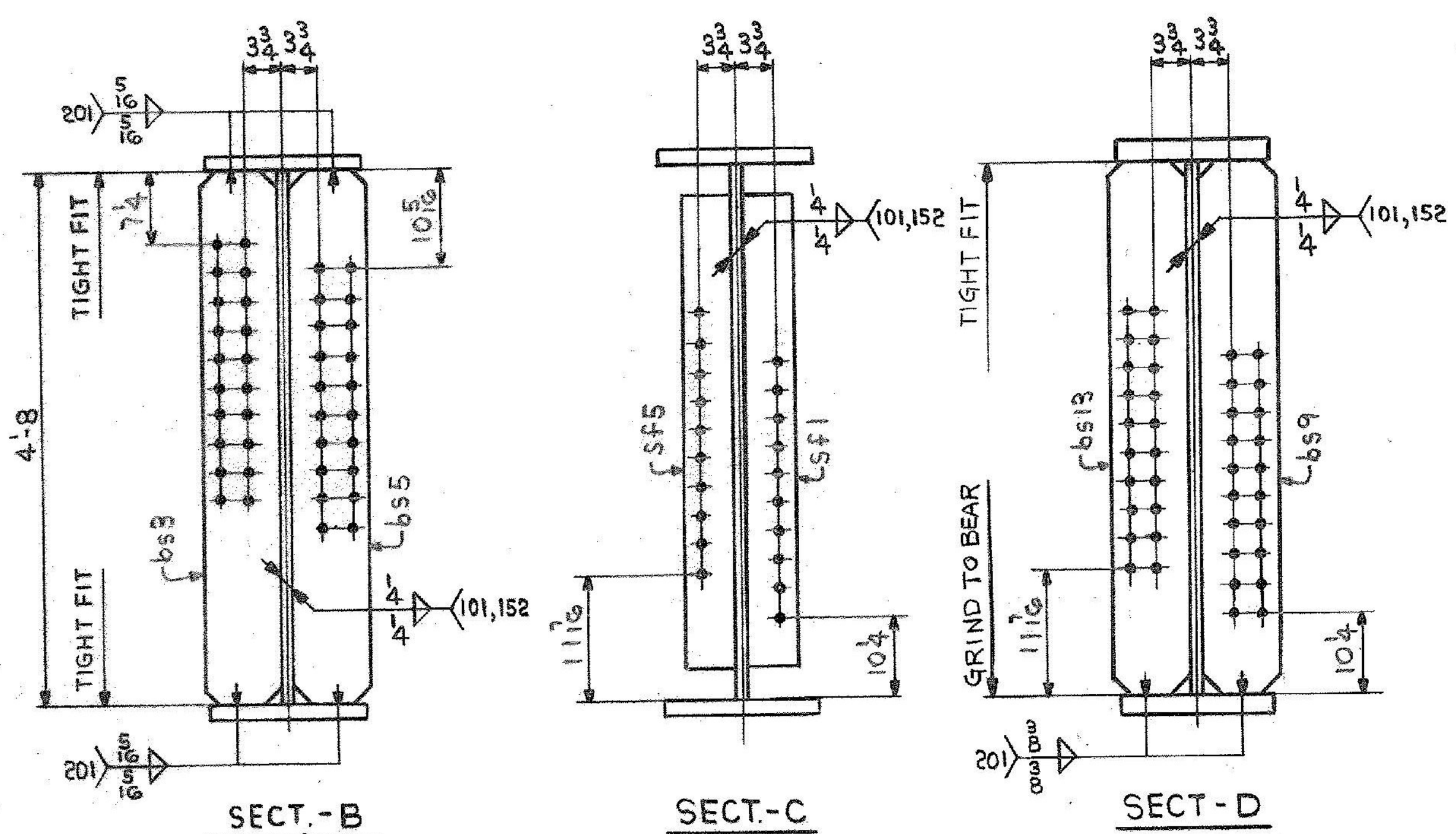


ONE GIRDER - G8A
 FOR GIRDER STANDARD DETAILS SEE DWG. 52-2.
 FOR WEB & FLG. R CUTTING & ASSEMBLY SEE DWG. 52-1.



SHIP		BILL OF MATERIAL				JOB NO.	DRAWING NO.	REV.
						4-44	52-4	△
MARK	NO.	MARK	SHAPE	LENGTH	WT.	ITEM NO.	WT.	REMARKS
G8A	ONE		GIRDER					
	1	wpl	R 5/8 x 56 1/2	63 10	58 1/2 x 67 0	1 B		CVN
	1	wp2	R 5/8 x 57 1/2	63 9 1/2	57 1/2 x 67 0	1 C	151 1/2	CVN
	1	tf1	R 7/8 x 16	80 7 1/2	1 0 80 10	1 E	32 1/2	
	1	tf2	R 1 1/4 x 16	47 0	1 0 47 2	1 H	44 1/2	CVN
	1	bfi	R 3/4 x 16	80 6 1/2	1 0 80 9	1 G	38 3/4	CVN
	1	bfi	R 1 1/4 x 16	47 0	1 0 47 2	1 I	44 1/2	
	1	bs3	R 3/4 x 8	4 8	6 P	2 B	9 5	
	1	bs5	R 3/4 x 8	4 8	3 5 x	2 B	9 5	
	1	bs9	R 3/4 x 8	4 8	10 0	2 B	9 5	
	1	bs13	R 3/4 x 8	4 8	5	2 B	9 5	
	4	sf1	R 3/8 x 5	4 2	1 1/2 3 1/2	2 C	1 7 7	
	4	sf5	R 3/8 x 5	4 2	2 1/2 2 1/2	2 C	1 7 7	

IT. NO. 506.91 BR. NO. 6 PROJ. NO. F020-1(10)

FOR APPROVAL | **FOR FILES & FIELD**

STEEL: ASTM. A36 A572 GR A588 GR Unless Noted

WELDING ELECTRODE: E70 See Welding Proc. None

SHOP CONN: Bolted Welded None

FIELD CONN: Bolted Welded None

HOLES: 13/16 15/16 Unless Noted None

PAINT: None Shopcoat Galv. After Fab. At Noted

SPECIAL PAINT: NONE

SPECIAL CLEANING: Blast Clean None SSPC-SP6

GIRDER - G8A

APPROVED: 2-1-85
 PRINT DIST.
 7 12-14-84 APP.
 8 2-26-85 FAB.
 ORIG 5-26-86 VAT

Bancroft & Martin Inc.
 South Portland, Maine 04106

JOB: U.S. ROUTE 4 E.B. OVER OTTER CREEK
 RUTLAND, VERMONT

CUSTOMER: EARTH CONSTRUCTION
 DESIGNER: STATE OF VERMONT, AGENCY OF TRANS.

REV. △
 CHECKED RW 12-13-84
 DRAWN DW 11-30-84

ORDER NO. JOB NO. DRAWING NO. REV.
 4-44 52-4 △