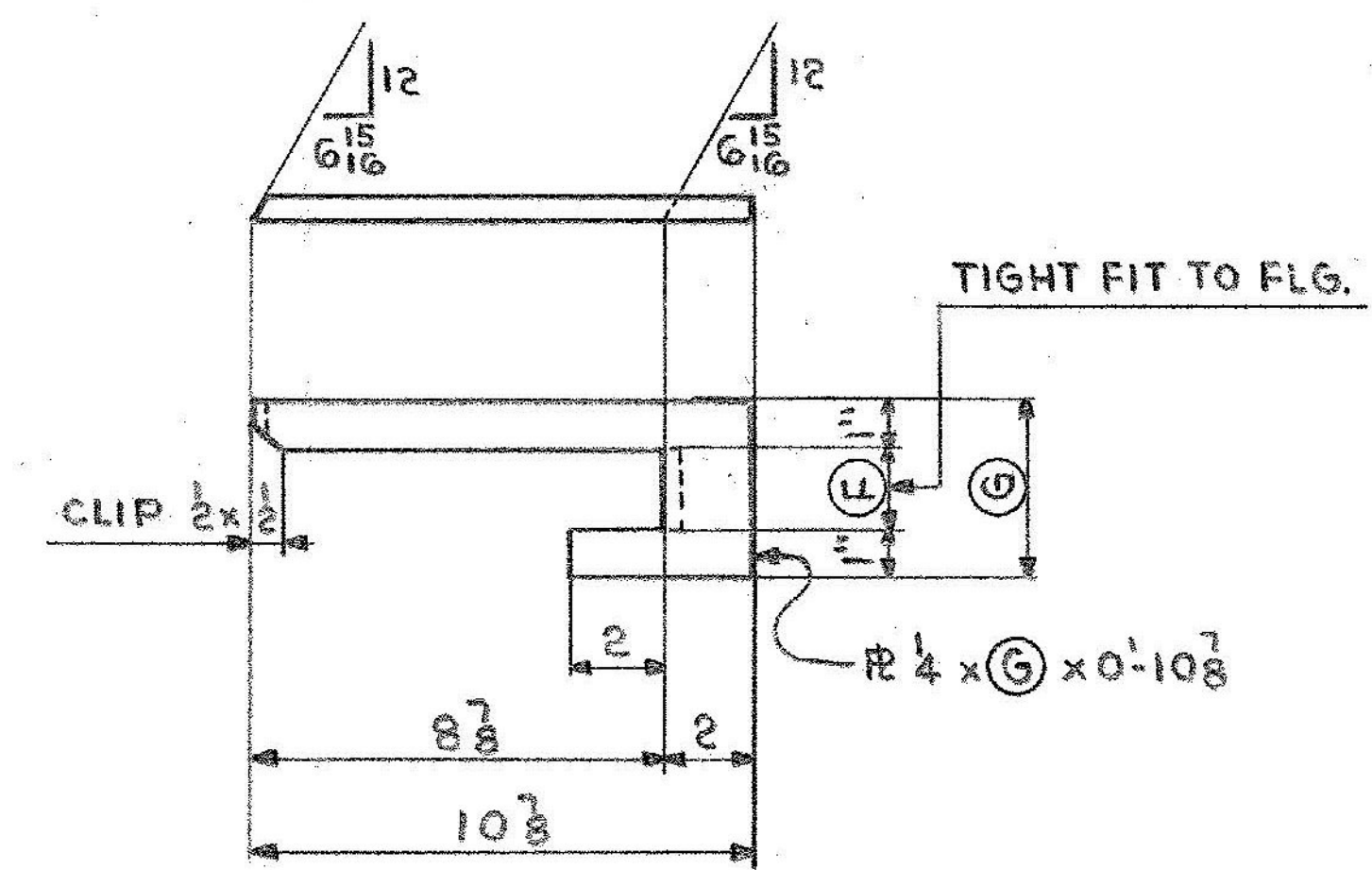


4-bs1  
4-bs2

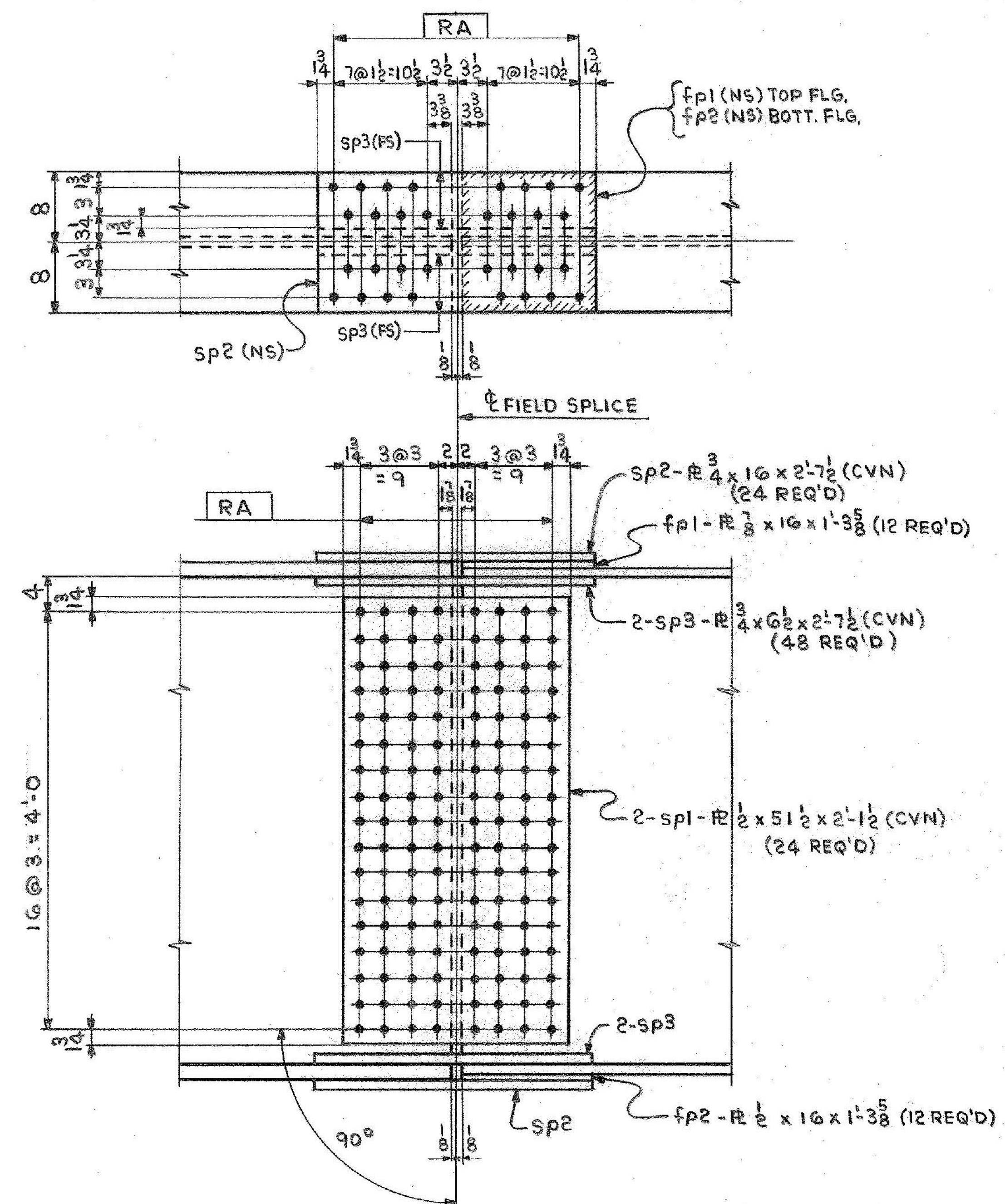
MARK	NO. REQ'D	(A)
bs3	10	7 1/4
bs4	2	10 3/4
bs5	2	10 5/16
bs6	2	10 8/8
bs7	2	8 7/16
bs8	2	8 8/8

MARK	NO. REQ'D	(B)
bs9	10	10 1/4
bs10	2	1'-1 3/4
bs11	2	1'-1 5/16
bs12	2	1'-1 8/8
bs13	2	11 7/16
bs14	2	11 8/8

MARK	NO. REQ'D	(C)	(D)
sf1	60	10 1/4	7 1/4
sf2	12	1'-1 3/4	10 3/4
sf3	12	1'-1 5/16	10 5/16
sf4	12	1'-1 8/8	10 8/8
sf5	12	11 7/16	8 7/16
sf6	12	11 8/8	8 8/8



MARK	NO. REQ'D	(F)	(G)
fb1 <sup>R</sup>	2	1 3/4	3 3/4
fb1 <sup>L</sup>	2	1 3/4	3 3/4
fb2 <sup>R</sup>	1	1 8/8	2 8/8
fb2 <sup>L</sup>	1	1 8/8	2 8/8



FIELD SPLICE DETAIL  
FS#1 (AS SHOWN)  
FS#2 (ROTATED 180°)

SHOP NOTE: HOLES NOTED RA TO BE SUB-PUNCHED OR SUB-DRILLED 11/16" AND REAMED TO 15/16" WITH ALL PARTS ASSEMBLED OR DRILL FULL SIZE (15/16") FROM THE SOLID WITH ALL PARTS ASSEMBLED. ALL GIRDERS MUST BE ASSEMBLED PER "SHOP ASSEMBLY DIAGRAM" (DWG. 52-1) PRIOR TO REAMING OR DRILLING.

- NOTES:  
1. ALL MAT'L ASTM A588.  
2. HOLES - 15/16" φ (U.N.).

IT. NO. 506.91	BR. NO. 6	PROJ. NO. F020-1(10)
FOR APPROVAL		FOR FILES & FIELD
GIRDER STANDARD DETAILS		
APPROVED 2-1-85	Pancroft & Martin Inc.	
PRINT DIST.	South Portland, Maine 04106	
7 12-14-84 APP.	JOB: U.S. ROUTE 4 E.B. OVER OTTER CREEK RUTLAND, VERMONT	
8 2-26-85 FAB.	CUSTOMER: EARTH CONSTRUCTION	
ORIG 3-26-86 VAT	DESIGNER: STATE OF VERMONT, AGENCY OF TRANS.	
REV. Δ	ORDER NO.	JOB NO.
CHECKED: RH 12-13-84		DRAWING NO. 4-44
DRAWN: Dw 11-30-84		REV. 52-2