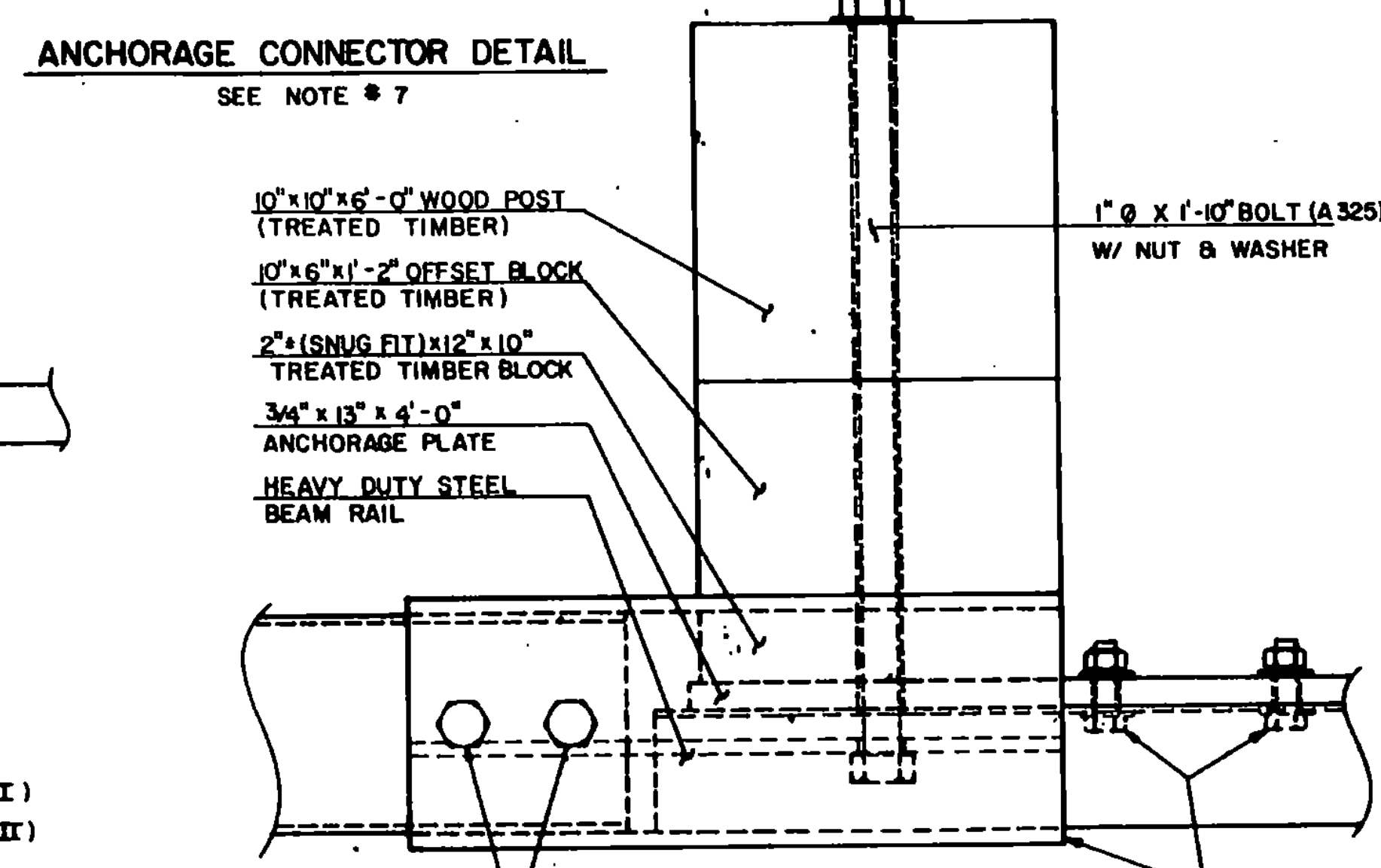
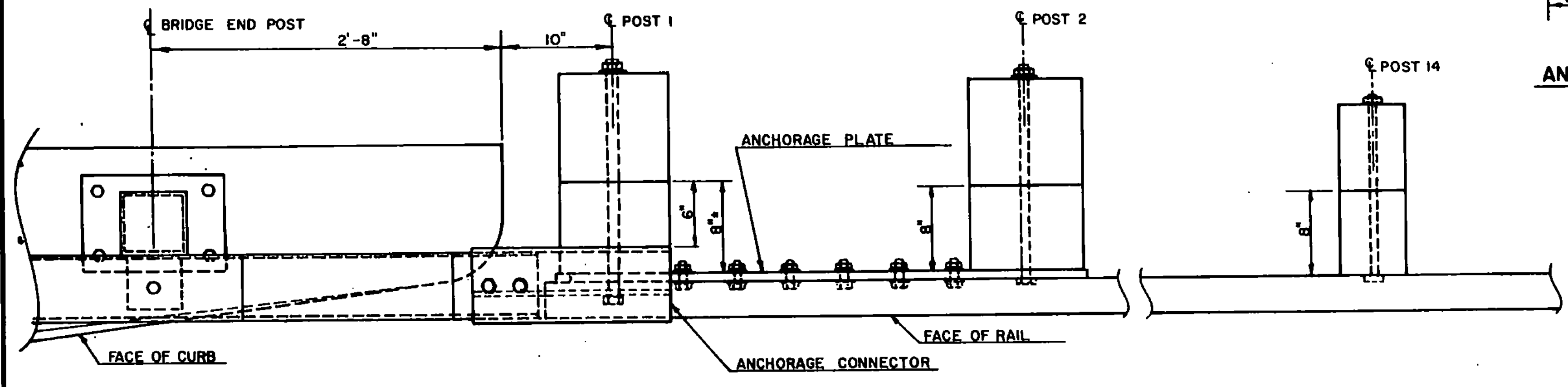


- NOTES**
- REFER TO STANDARD G-1 FOR DETAILS OF APPROACH GUARD RAIL.
 - APPROACH RAIL SPLICES SHALL LAP IN DIRECTION OF TRAFFIC FLOW.
 - ANCHORAGE CONNECTOR AND ANCHORAGE PLATE SHALL BE ASTM A 36 STEEL GALVANIZED TO ASTM A 123 AFTER FABRICATION.
 - REFER TO STANDARD SB-R4A-82 FOR NOTES AND DETAILS OF BRIDGE RAILING.
 - GUARD RAIL APPROACH SECTION-TYPE I & II SHALL INCLUDE ANCHORAGE PLATE, ANCHORAGE CONNECTOR, RAIL, POSTS, BLOCKS, AND ATTACHMENT HARDWARE.
 - APPROACH RAILING SHALL BE HEAVY DUTY STEEL BEAM FOR 50'-0" FROM THE C OF POST I FOR TYPE I AND 12'-6" FROM THE C OF POST I FOR TYPE II.
 - ALLOWABLE DIMENSIONAL TOLERANCE FOR BENT SECTIONS IS ±1/16 OF AN INCH.

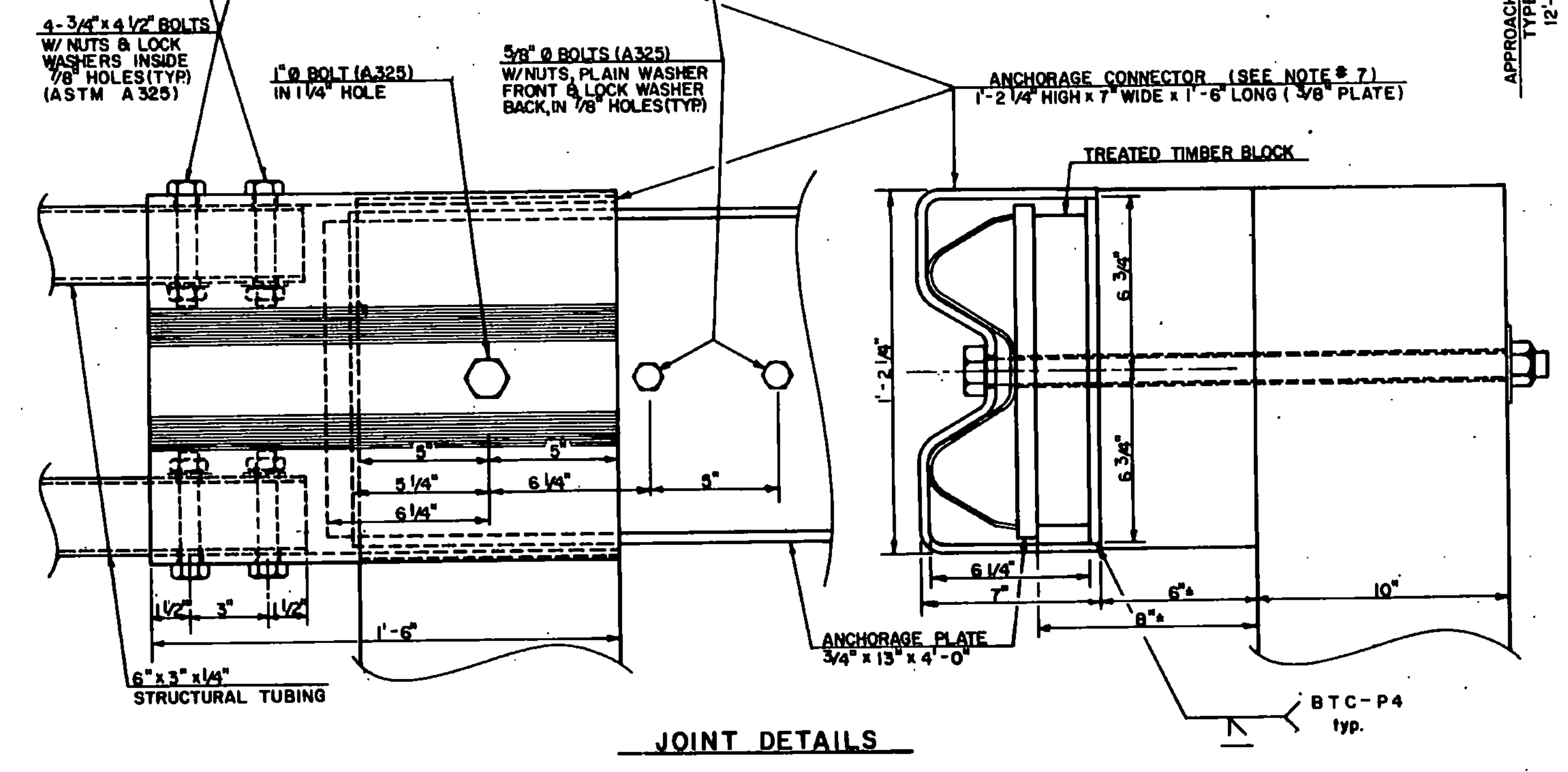
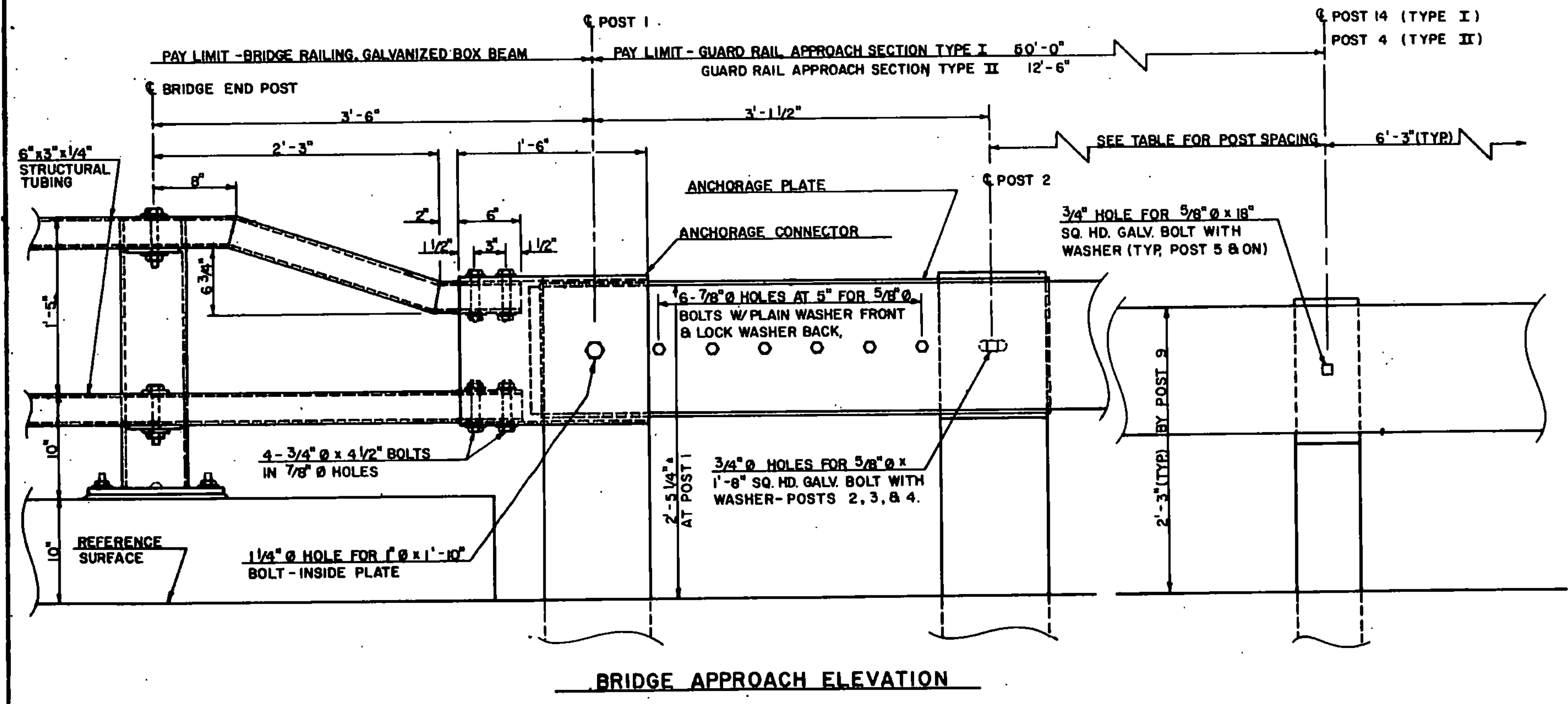


GUARD RAIL APPROACH SECTION TYPE I

POST NO.	POST SIZE	OFFSET BLOCK	SPACING
END POST			
1	10" x 10"	10" x 6"	3'-6"
2	10" x 10"	10" x 6"	3'-1 1/2"
3	10" x 10"	10" x 6"	3'-1 1/2"
4	10" x 10"	10" x 6"	3'-1 1/2"
5	8" x 8"	8" x 8"	3'-1 1/2"
6	8" x 8"	8" x 8"	3'-1 1/2"
7	8" x 8"	8" x 8"	3'-1 1/2"
8	8" x 8"	8" x 8"	3'-1 1/2"
9	6" x 8"	6" x 8"	4'-2"
10	6" x 8"	6" x 8"	4'-2"
11	6" x 8"	6" x 8"	4'-2"
12	6" x 8"	6" x 8"	6'-3"
13	6" x 8"	6" x 8"	6'-3"
14	6" x 8"	6" x 8"	6'-3" (TYP.)

GUARD RAIL APPROACH SECTION TYPE II

POST NO.	POST SIZE	OFFSET BLOCK	SPACING
END POST			
1	10" x 10"	10" x 6"	3'-6"
2	10" x 10"	10" x 6"	3'-1 1/2"
3	8" x 8"	8" x 8"	4'-8 1/4"
4	8" x 8"	8" x 8"	4'-8 1/4"
			6'-3" (TYP.)



REVISIONS AND CORRECTIONS

- ADDED TYPE II APPROACH DETAILS, AND REVISED ANCHORAGE CONNECTOR DETAILS. R. HAUP 9/7/83
- ADDED DIMENSION TO POST NO. 1. R.S.H. 12-13-84
- CHANGED WELD DESIGNATION FOR ANCHORAGE CONNECTOR. K.B.M. 3-30-88.

APPROVED:

DECEMBER 28, 1981
DATE

William J. Goss
CHIEF OF DESIGN

W.M. Smith
STRUCTURES ENGINEER

J. J. Goss
DIRECTOR OF ENGINEERING AND CONSTRUCTION

GUARD RAIL APPROACH SECTION-TYPE I & TYPE II



STANDARD SB-R4B-82