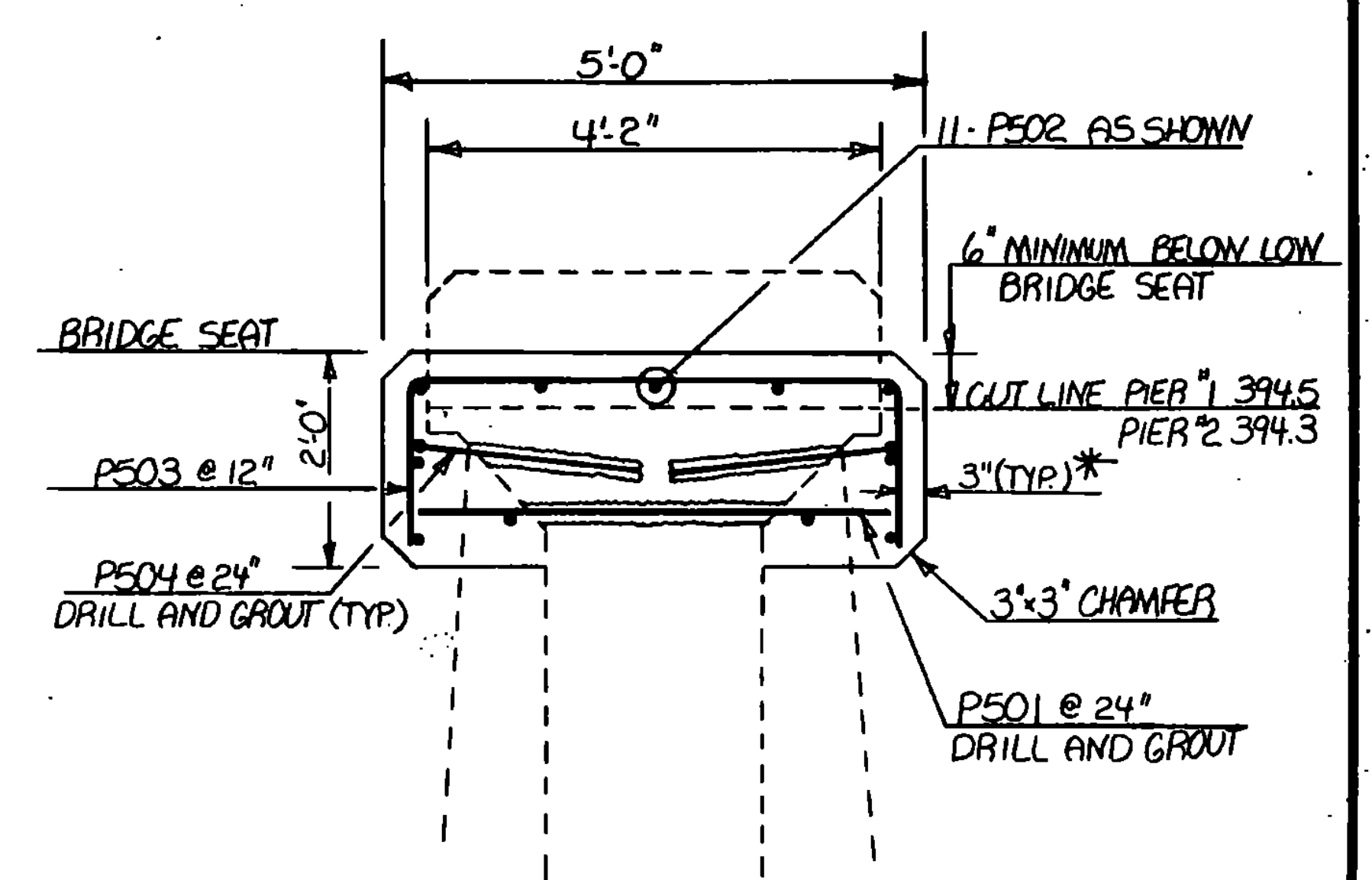
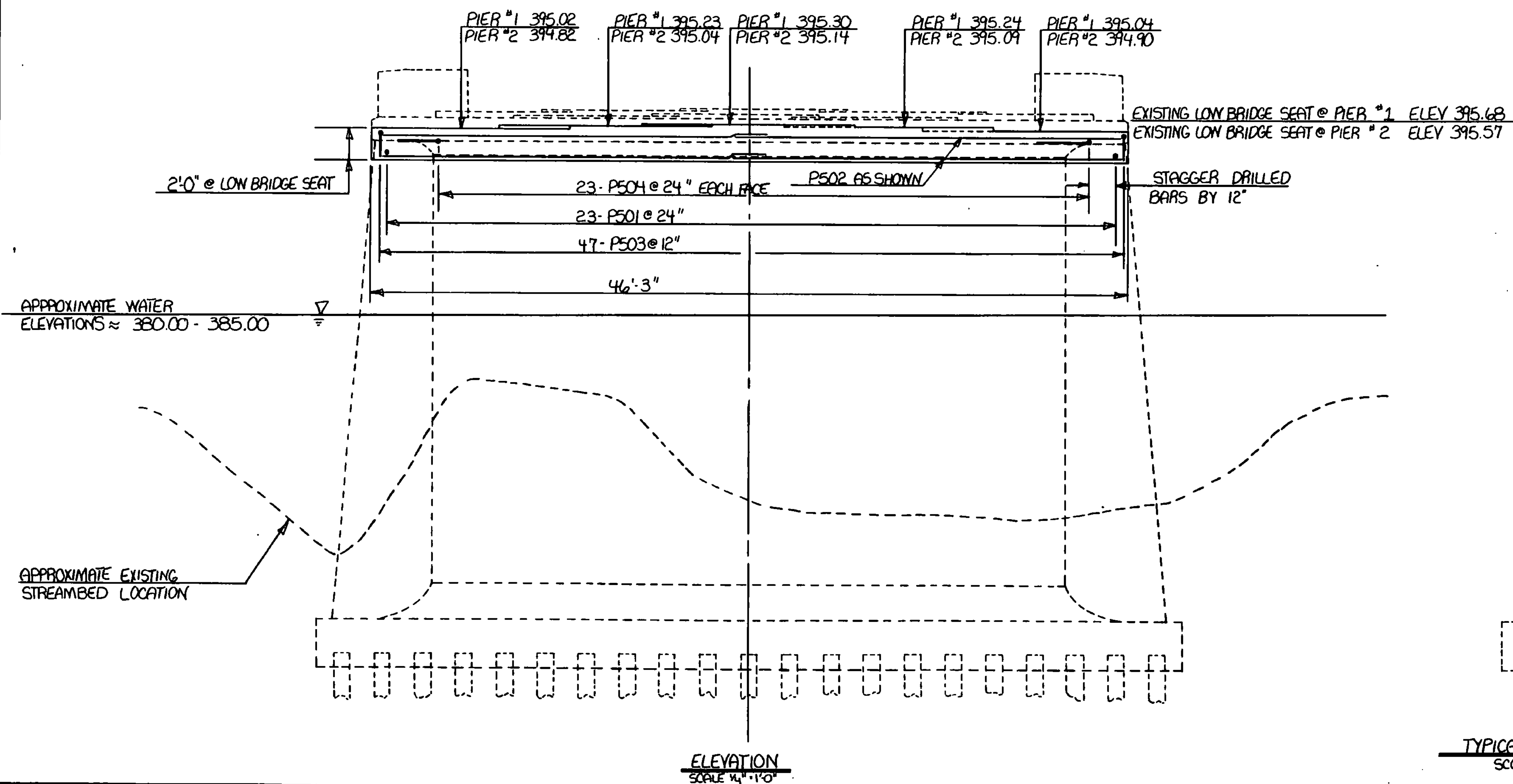


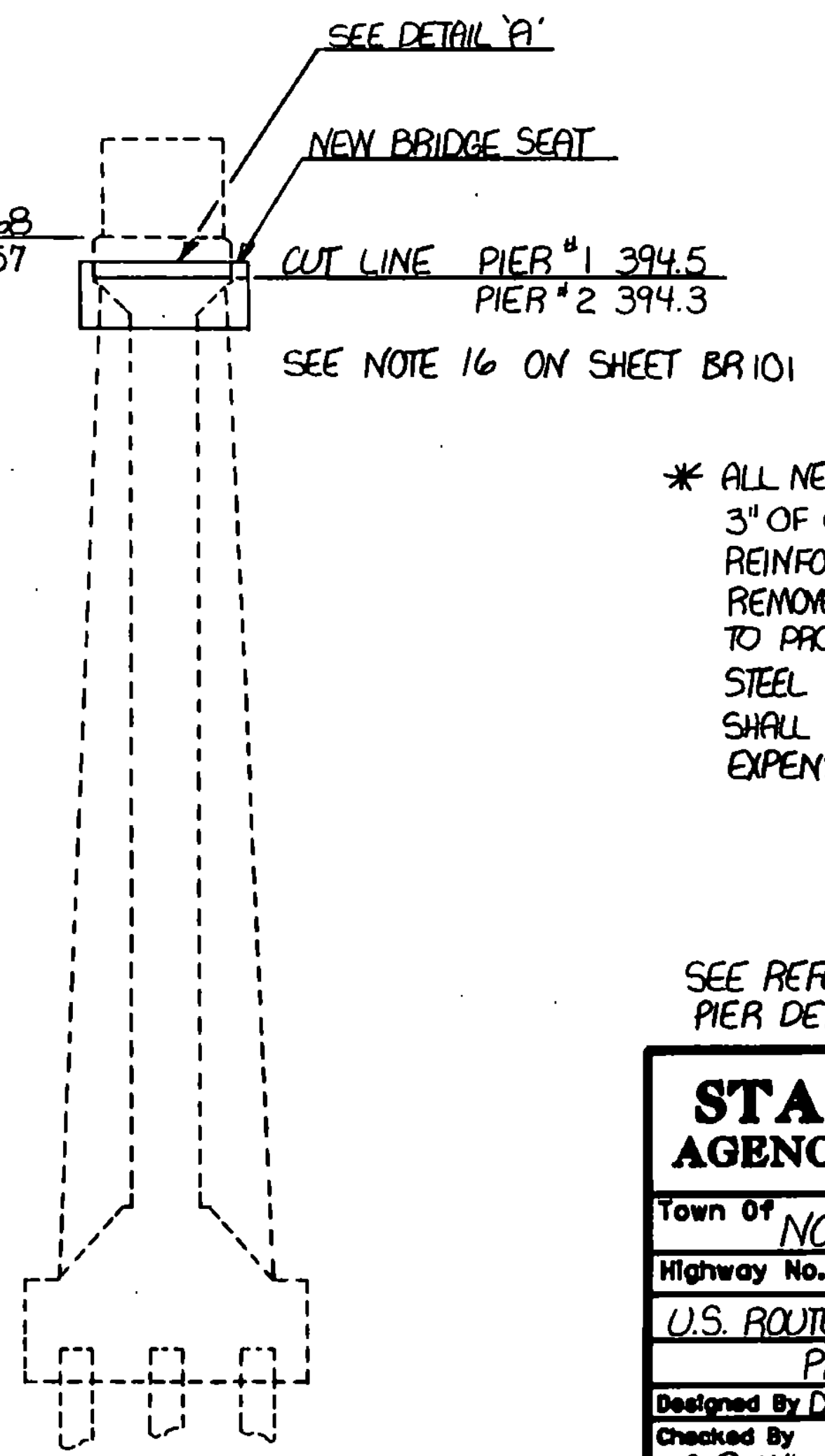
PLAN
SCALE 1/4" = 1'-0"



DETAIL A
SCALE 3/4" = 1'-0"



ELEVATION
SCALE 1/4" = 1'-0"



TYPICAL PIER SECTION
SCALE 1/4" = 1'-0"

* ALL NEW REINFORCING STEEL SHALL HAVE 3" OF CLEAR COVER. ALL OF THE EXISTING REINFORCING STEEL EXPOSED DURING THE REMOVAL OF CONCRETE SHALL BE BENT SO AS TO PROVIDE 3" OF COVER. ANY REINFORCING STEEL DAMAGED BY THE REMOVAL OF CONCRETE SHALL BE REPLACED AT THE CONTRACTORS EXPENSE.

SEE REFERENCE SHEET BR 104 FOR EXISTING PIER DETAILS

STATE OF VERMONT AGENCY OF TRANSPORTATION	
Town of NORWICH	Bridge No. 81
Highway No. U.S. ROUTE 5	Log Sta. 345+87
U.S. ROUTE 5 OVER THE OMPOMPANCOOSUC RIVER	
PIER #1 AND #2 DETAILS	
Designed By D.J. HOYNE	Drawn By D.J. HOYNE
Checked By C.P. WILLIAMS	Bridge Design Supervisor
Date 2-92	Date 4/92
PROJECT NORWICH	PROJECT NO. BHS 0113 (36)
L&C. Info.	
Bridge Sheet No. BR 114	Sheet 30 of 70

BR-6