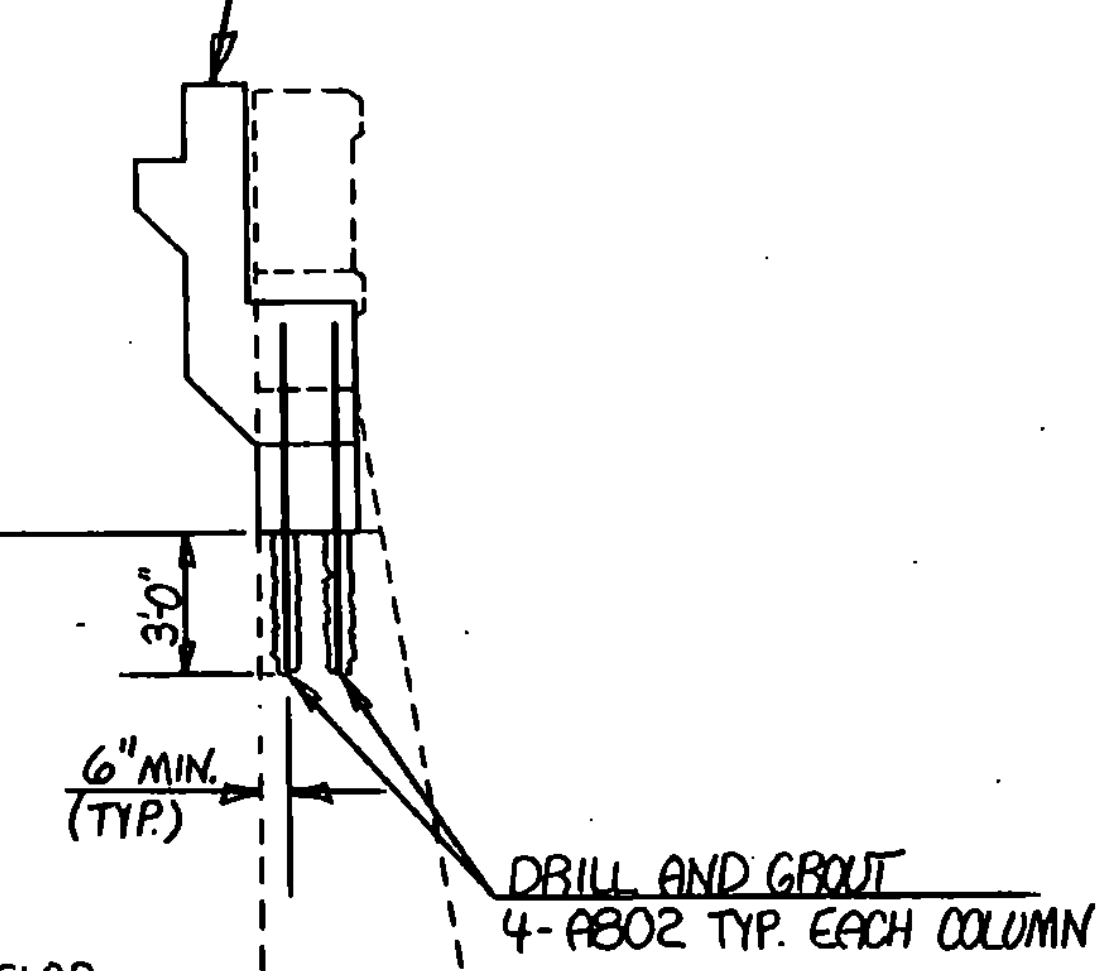
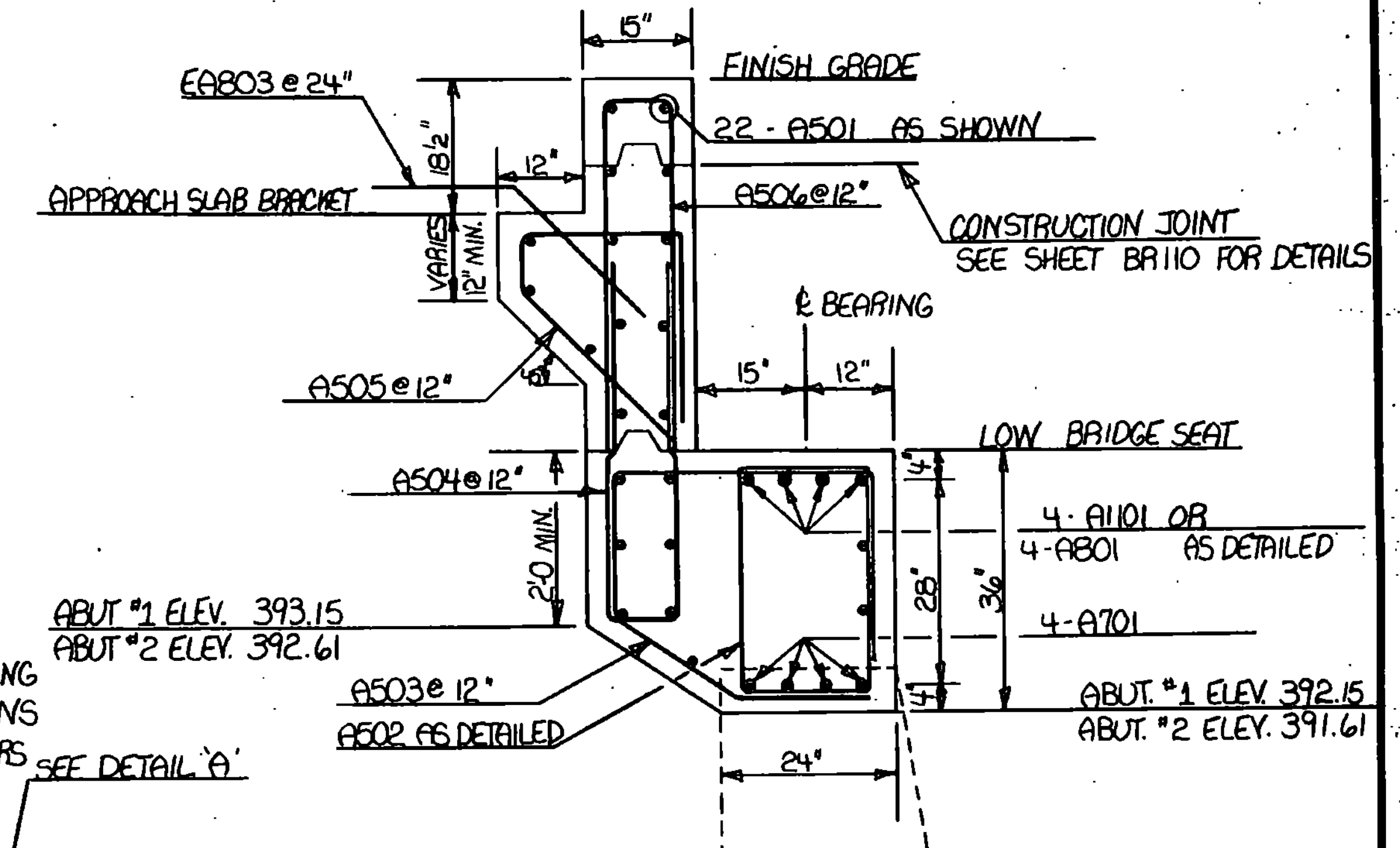


* WHEN REMOVING THE EXISTING ABUTMENT BEAM, CARE SHOULD BE TAKEN TO NOT DAMAGE THE EXISTING REINFORCING STEEL EXTENDING UP FROM THE COLUMNS AS SHOWN. DAMAGED REINFORCING BARS SHALL BE REPLACED AT THE CONTRACTORS EXPENSE.

SEE DETAIL 'A'



E DENOTES EPOXY COATED BARS

SEE REFERENCE SHEET BR123 FOR EXISTING ABUTMENT DETAILS.

STATE OF VERMONT	
AGENCY OF TRANSPORTATION	
Town of NORWICH	Bridge No. 81
Highway No. U.S. ROUTE 5	Log Sta. 345+87
	Surv. Sta. 345+87
U.S. ROUTE 5 OVER THE OMPROMPNOUSUC RIVER	
ABUTMENT #1 AND #2 DETAILS	
Designed By D.J. HOYNE	Drawn By D.J. HOYNE
Checked By C.P. WILLIAMS	Date 2-92
	Bridge Design Supervisor F.W. Bolkum
	Date 4/92
PROJECT NORWICH	PROJECT NO. BHS 0113 (36)
L.L.C. Info.	
Bridge Sheet No. BR113	Sheet 29 of 70