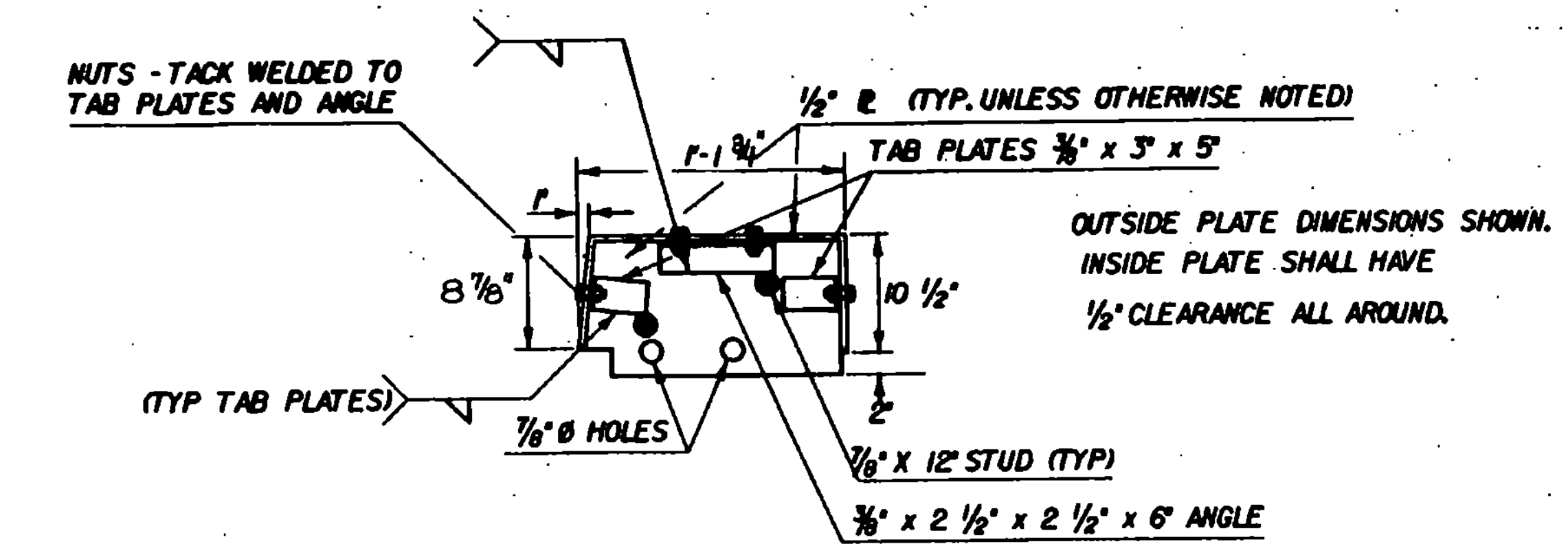
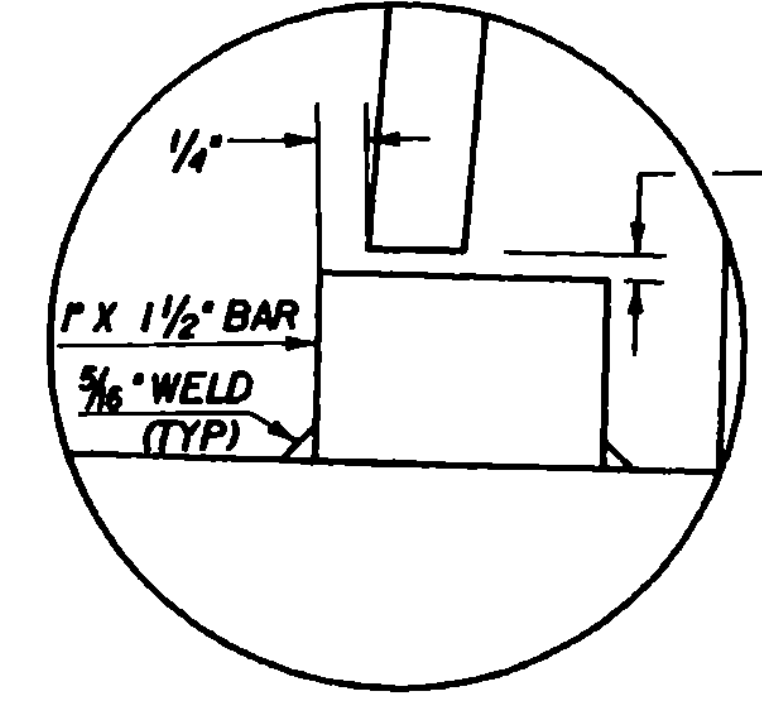


DETAIL "A"
SCALE: 3" = 1'-0"

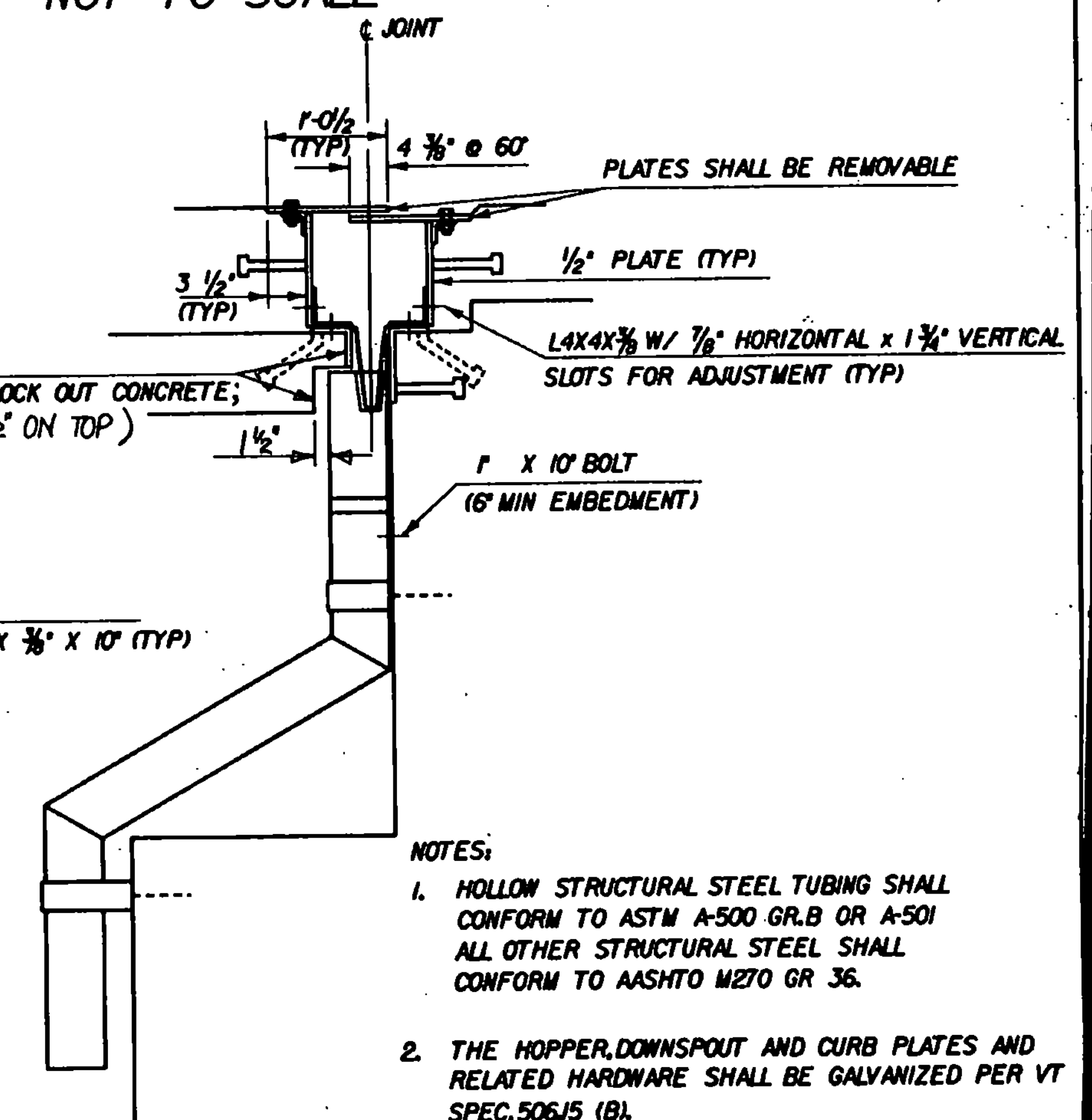
PARTIAL PLAN VIEW
SCALE: 1" = 1'-0"



CURB PLATE DETAILS
(NORMAL TO CURB)
NOT TO SCALE

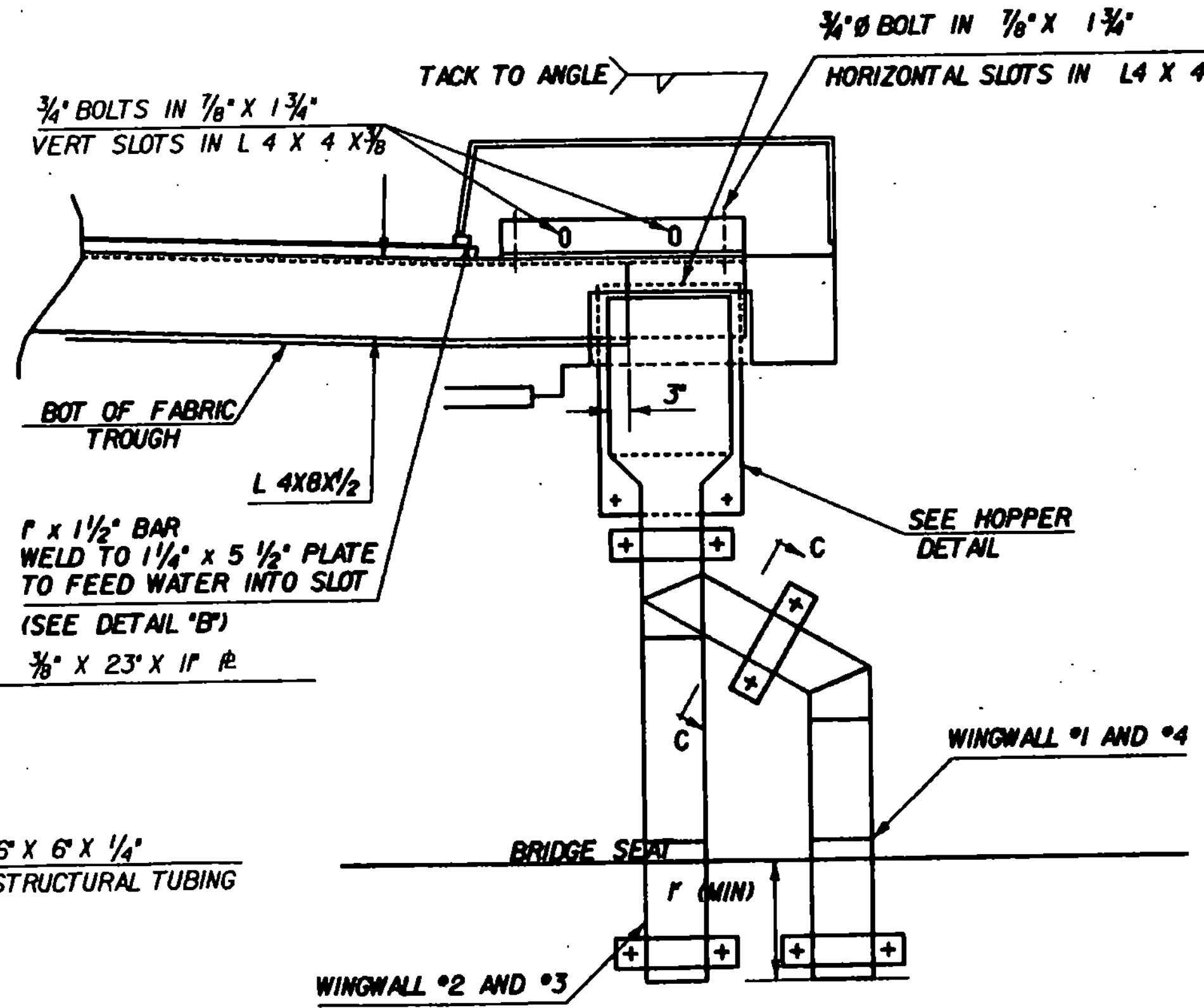


DETAIL "B"
NTS

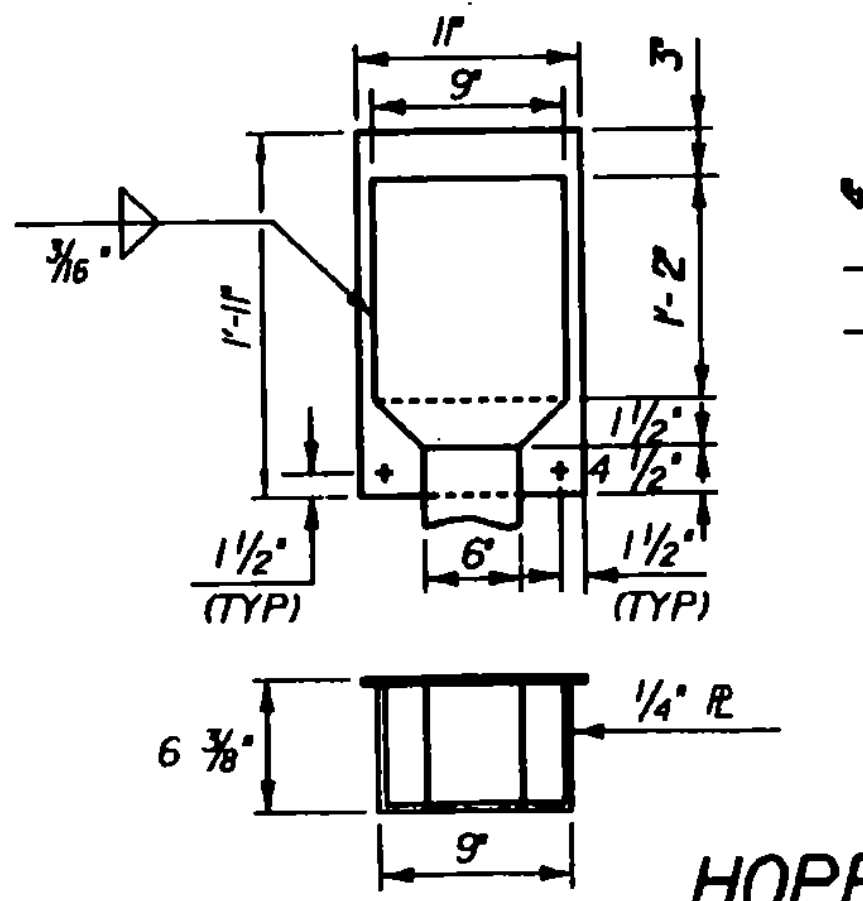


SECTION A-A
1" = 1'-0"

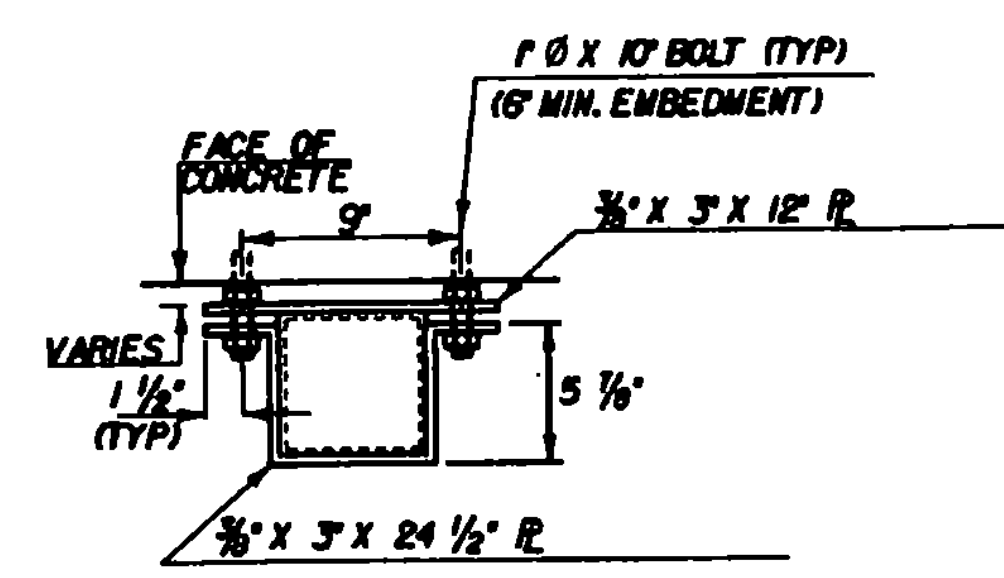
- NOTES:
- HOLLOW STRUCTURAL STEEL TUBING SHALL CONFORM TO ASTM A-500 GR. B OR A-501 ALL OTHER STRUCTURAL STEEL SHALL CONFORM TO AASHTO M270 GR. 36.
 - THE HOPPER, DOWNSPOUT AND CURB PLATES AND RELATED HARDWARE SHALL BE GALVANIZED PER VT SPEC. 506J5 (B).
 - ONE HOPPER WILL BE REQUIRED @ EACH CORNER OF THE BRIDGE.



SECTION B-B @ EXP. JOINT
NOT TO SCALE



HOPPER DETAILS
NOT TO SCALE



SECTION C-C
1 1/2" = 1'-0"

STATE OF VERMONT		AGENCY OF TRANSPORTATION	
Town of NORWICH	Bridge No. 81	Log Sta. 345-47	Surv. Sta. 345-47
Highway No. U. S. ROUTE 5	HOPPER AND DOWNSPOUT DETAILS		
U. S. ROUTE 5 OVER THE OMPOMPAHOOSUC RIVER			
Designed By D. J. HOYNE	Drawn By K. S. CLAIRMONT	Date 2/92	
Checked By D. J. HOYNE	Bridge Design Supervisor F. Y. Bolkum	Date 4/92	
PROJECT NORWICH	PROJECT NO. BHS 01336	L&C. info. ZHh [30,47] TTB069HD.DGN	
Bridge Sheet No. BR11	Sheet 27 of 70		