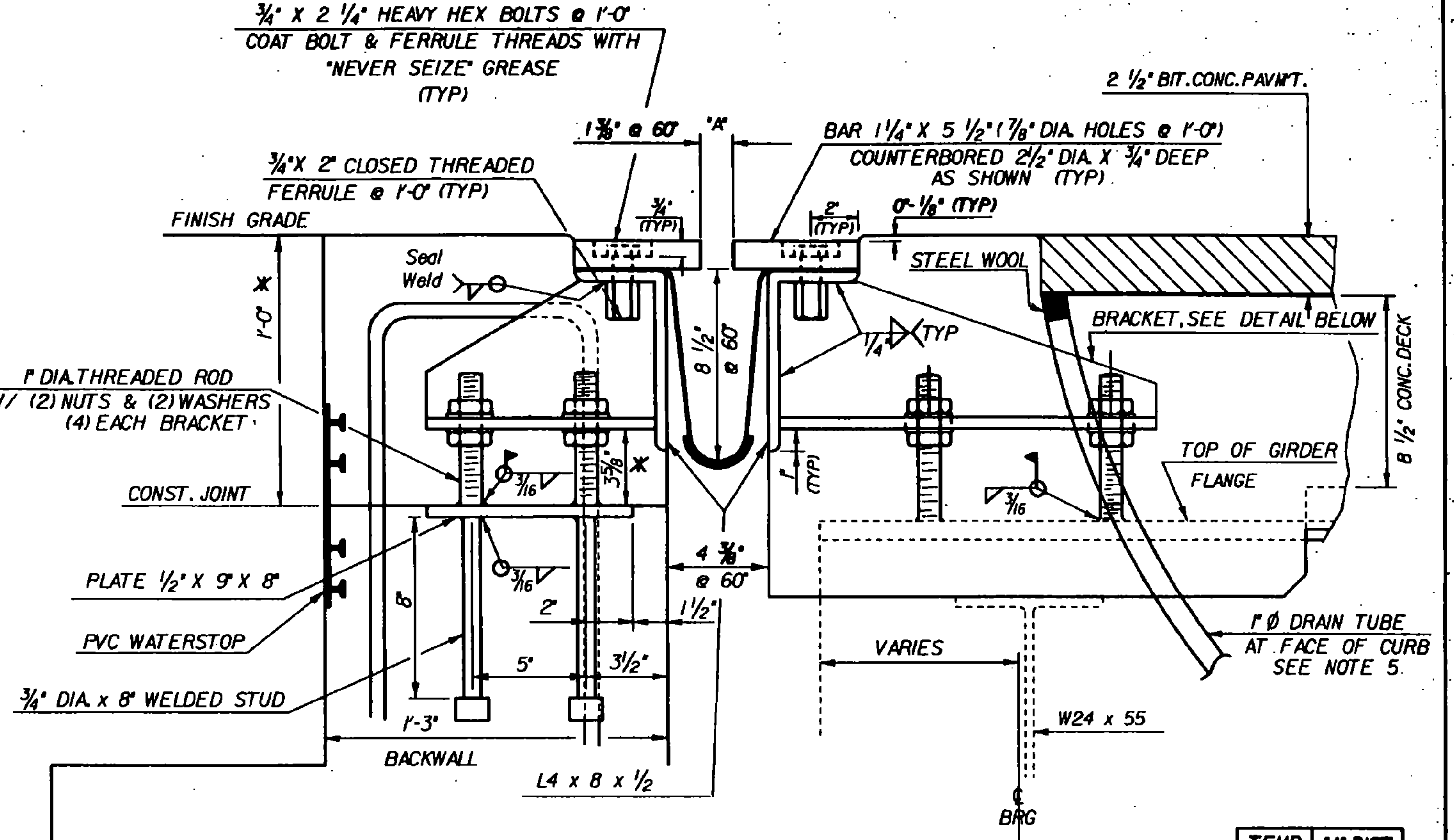


TYPICAL SECTION BETWEEN GIRDERS (NORMAL)

SCALE: 3" = 1'-0"

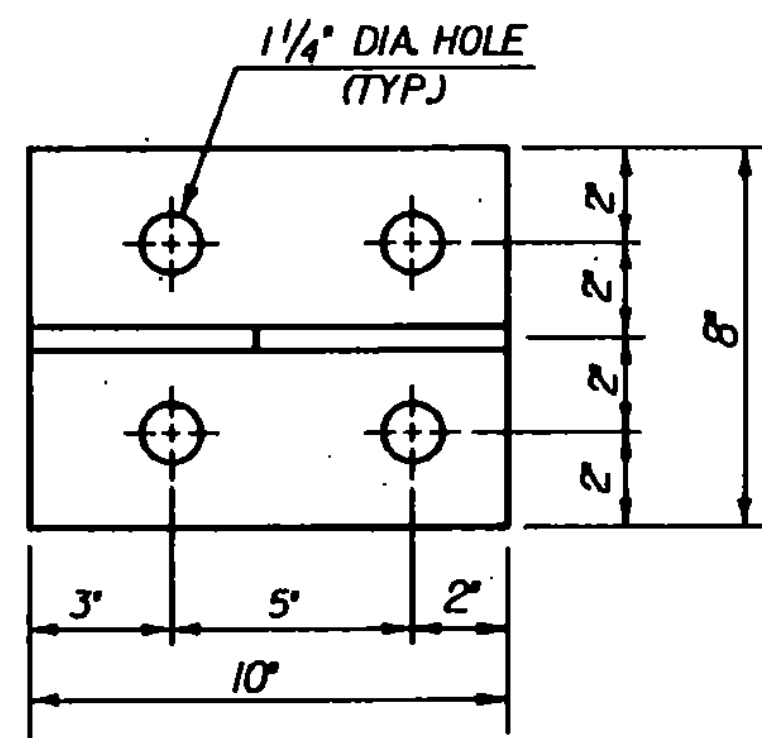


TYPICAL SECTION AT GIRDERS (NORMAL)

SCALE: 3" = 1'-0"

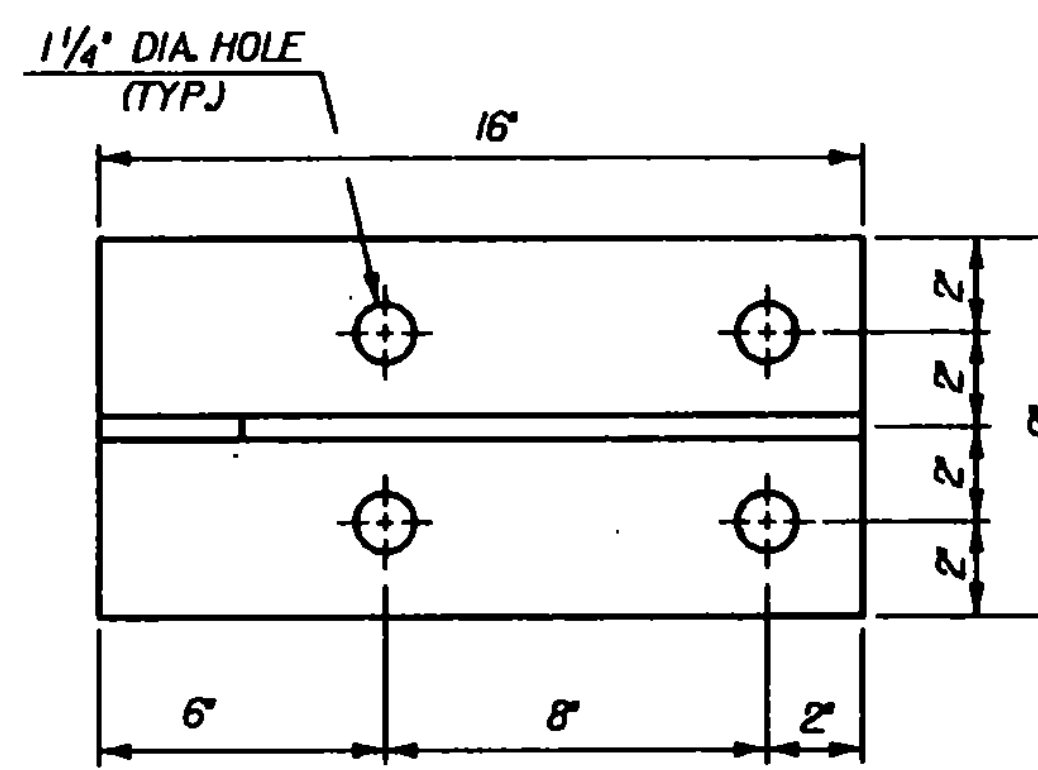
TEMP	"A" DIST
0° F	1 1/8"
15° F	1 1/4"
30° F	1 1/2"
45° F	1 3/4"
60° F	1 7/8"
75° F	1 7/8"
90° F	1 7/8"
105° F	1 7/8"

* THESE DIMENSIONS ARE THEORETICAL AND MAY CHANGE DEPENDING UPON THE OUTCOME OF THE BEAM PROFILES



BRACKET PLAN IN BACKWALL

SCALE: 3" = 1'-0"



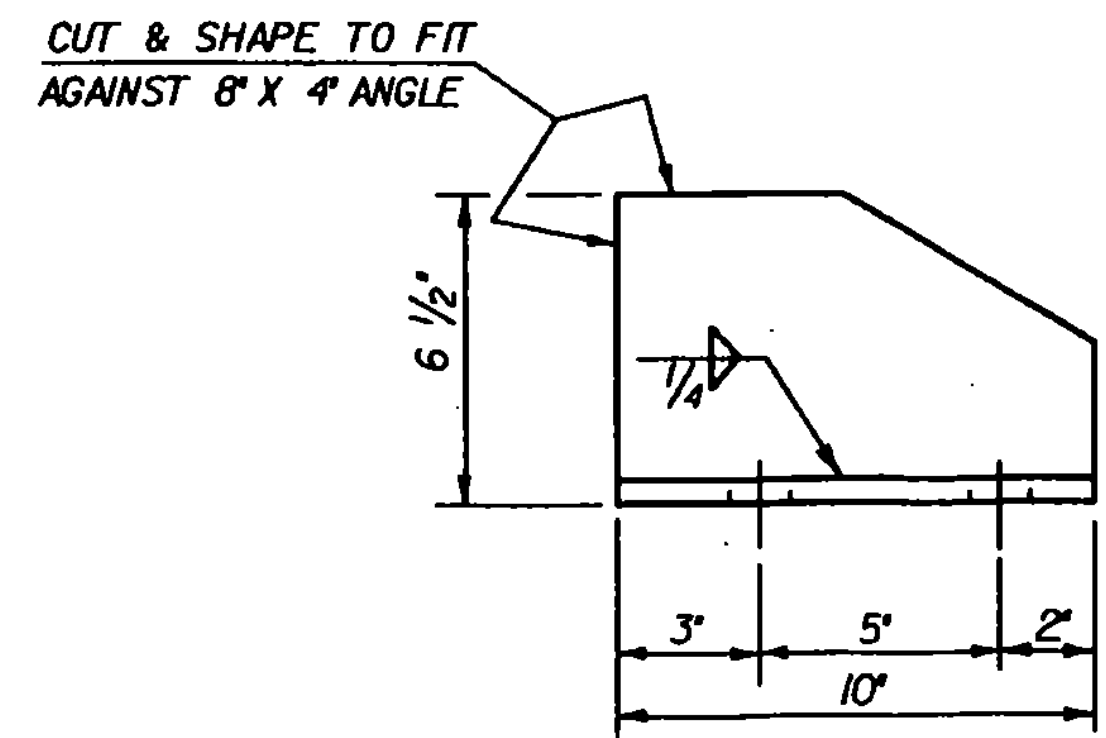
BRACKET PLAN ON GIRDER

SCALE: 3" = 1'-0"

P.V.C. WATERSTOP FOR CONSTRUCTION JOINTS

THE COSTS FOR P.V.C. WATERSTOP SHALL BE INCLUDED IN THE UNIT PRICE BID FOR CONCRETE. OTHER CONFIGURATIONS MAY BE USED UPON APPROVAL OF THE STRUCTURES ENGINEER.

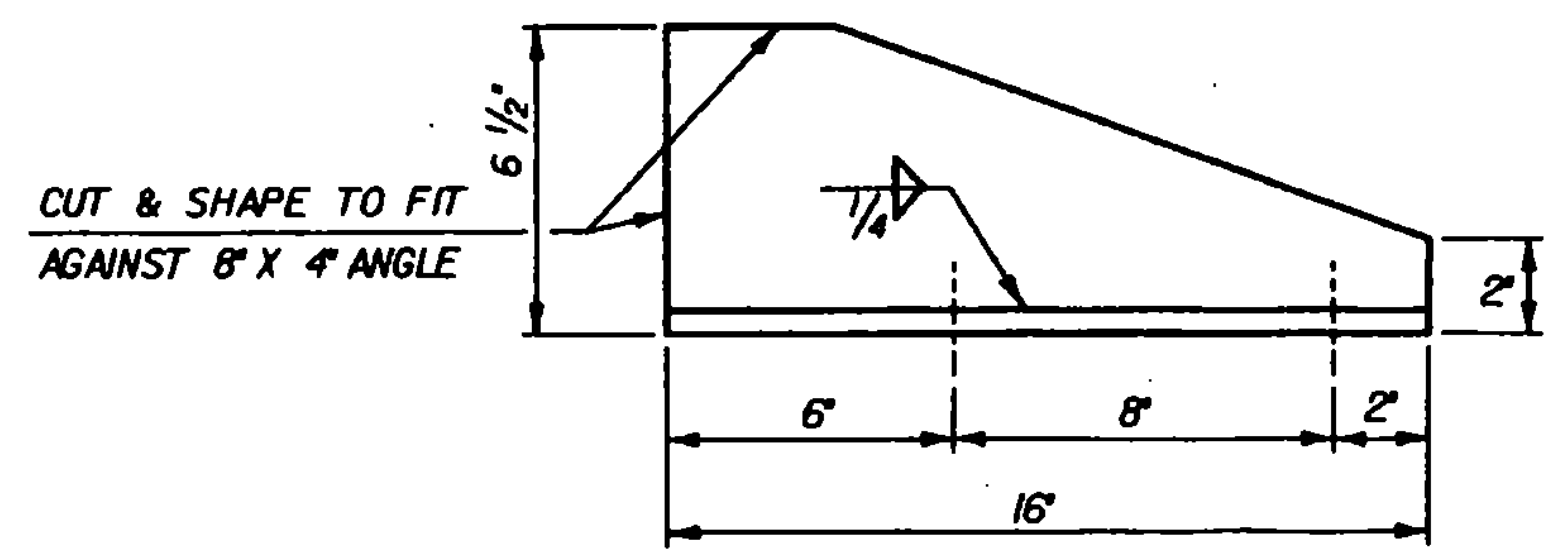
- NOTES
1. THE FINAL FINISH OF THE EXPANSION DEVICE SHALL BE COVERED DURING THE PLACING OF BRIDGE DECK CONCRETE.
 2. ALL STEEL COMPONENTS SHALL BE AASHTO M270 GRADE 36 GALVANIZED OR METALIZED AS PER SUBSECTION 506J5 (b) OR (c).
 3. THE 1 1/4" X 5 1/2" BARS SHALL BE FURNISHED IN 2 PIECES.
 4. DETAILS ON THIS SHEET ARE FOR ITEM 516J0 "BRIDGE EXPANSION JOINTS".
 5. A 1" DIAMETER PLASTIC DRAIN TUBE SHALL BE INSTALLED AS SHOWN AT THE FACE OF CURB. THE UPPER END IS TO BE PLUGGED WITH STEEL WOOL AND THE LOWER END IS TO EXTEND 1'-0" BELOW THE BOTTOM OF THE ADJACENT GIRDER. THE DRAIN TUBES SHALL BE FASTENED TO THE GIRDERS USING A METHOD APPROVED BY THE ENGINEER.
 6. PAYMENT FOR PVC WATERSTOP SHALL BE SUBSIDIARY TO CONCRETE, CLASS B.
 7. A DRIP BEAD OF PREFORMED FABRIC MATERIAL SHALL BE CEMENTED TO THE BOTTOM OF THE FABRIC TROUGH USING AN ADHESIVE APPROVED BY THE MANUFACTURER. A DRIP BEAD SHALL BE USED AT EVERY HOPPER LOCATION.



BRACKET ELEVATION IN BACKWALL

SCALE: 3" = 1'-0"

ALL PLATES 1/2"



BRACKET ELEVATION ON GIRDER

SCALE: 3" = 1'-0"

STATE OF VERMONT AGENCY OF TRANSPORTATION

Town Of **NORWICH** Bridge No. **81**

Highway No. **U. S. ROUTE 5** Log Sta. **345-47** Surv. Sta. **345-47**

EXPANSION JOINT DETAILS

U. S. ROUTE 5 OVER THE OMPOMPANOSUC RIVER

Designed By **D. J. HOYNE** Drawn By **K. S. CLARIMONT**

Checked By **D. J. HOYNE** Date **2/92** Bridge Design Supervisor **F.Y. Balkum** Date **4/92**

PROJECT **NORWICH** PROJECT NO. **BHS 0131361**

Loc. Info. **ZH1(30,47) 778069MD.DGN.1**

Bridge Sheet No. **BR10** Sheet **26** of **70**