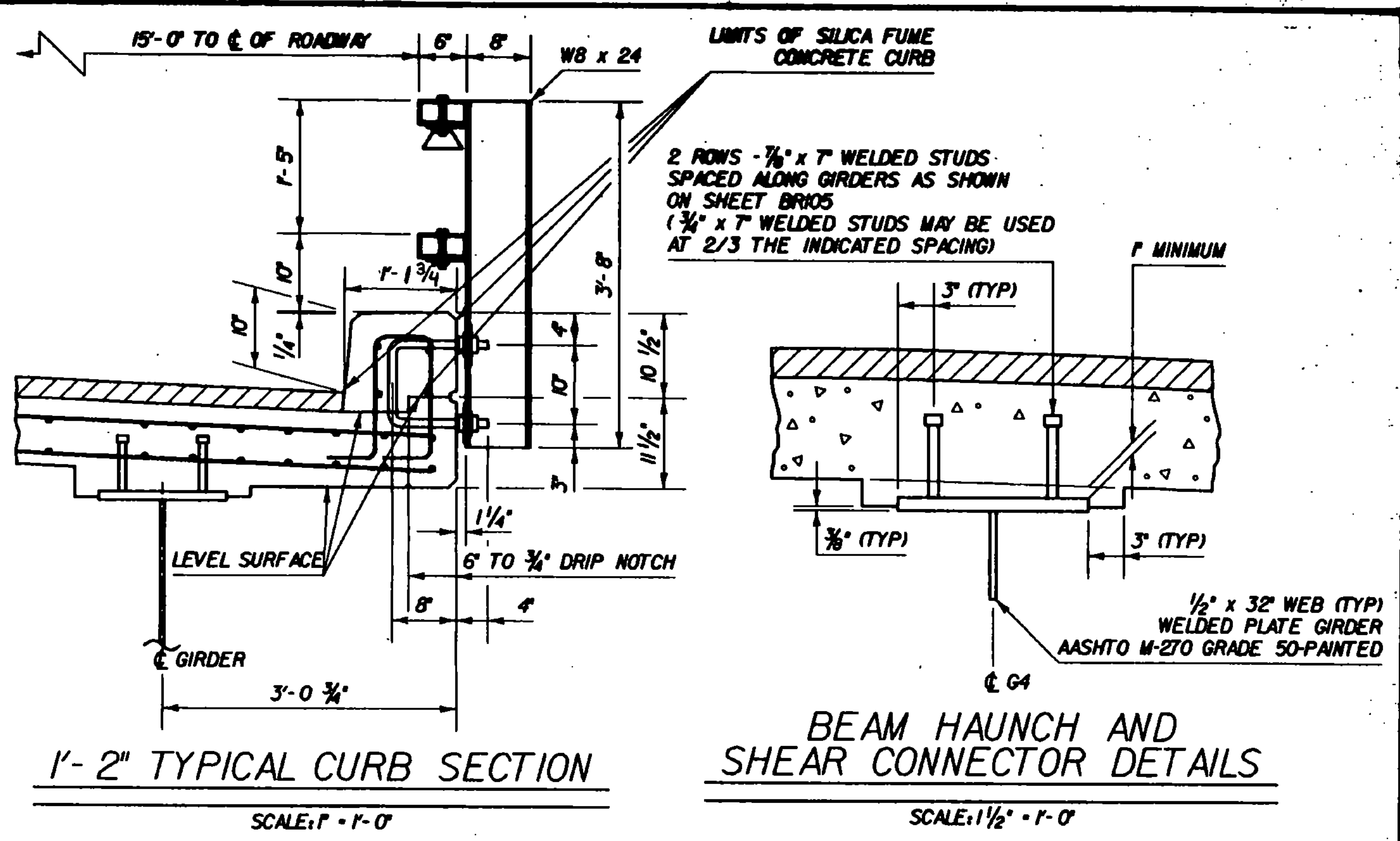
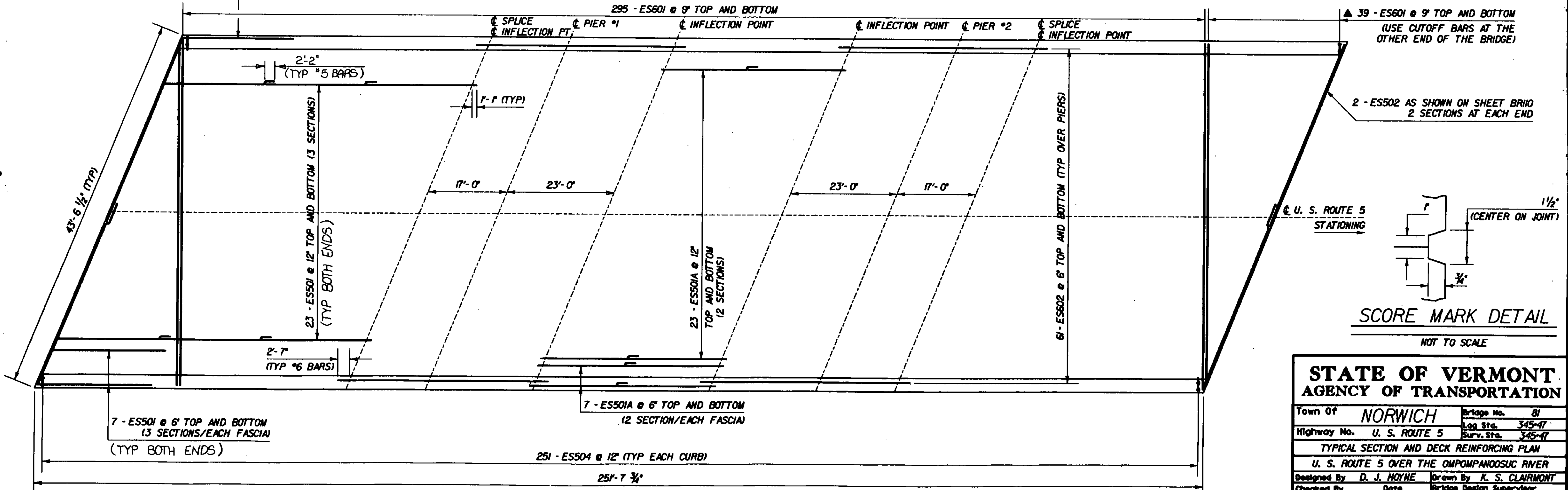


TYPICAL SECTION
SCALE: 1/2" = 1'-0"

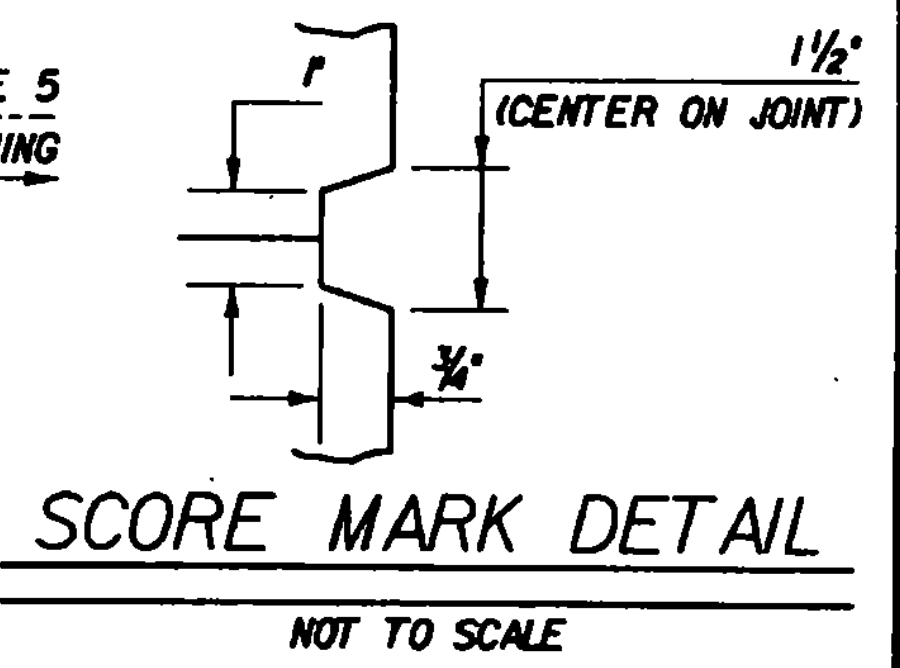


1-2\"/>

BEAM HAUNCH AND SHEAR CONNECTOR DETAILS
SCALE: 1/2" = 1'-0"



DECK REINFORCING PLAN
HORIZONTAL SCALE: 1" = 10'-0"
VERTICAL SCALE: 1/4" = 1'-0"



SCORE MARK DETAIL
NOT TO SCALE

| | |
|---|-------------------------------------|
| STATE OF VERMONT | |
| AGENCY OF TRANSPORTATION | |
| Town of NORWICH | Bridge No. 81 |
| Highway No. U. S. ROUTE 5 | Log Sta. 345-47 |
| | Surv. Sta. 345-47 |
| TYPICAL SECTION AND DECK REINFORCING PLAN | |
| U. S. ROUTE 5 OVER THE OMPOMPANDOSUC RIVER | |
| Designed By D. J. HOYNE | Drawn By K. S. CLAIRMONT |
| Checked By D. J. HOYNE | Bridge Design Supervisor |
| Date 2/92 | F.Y. Bo/kum Date 4/92 |
| PROJECT NORWICH | PROJECT NO. BHS 013.361 |
| L&C. Info. ZHI (30,47) 778069.DGN/1 | |
| Bridge Sheet No. BR104 | Sheet 20 of 70 |

E - DENOTES EPOXY COATED BARS
▲ CUT TO FIT IN FIELD