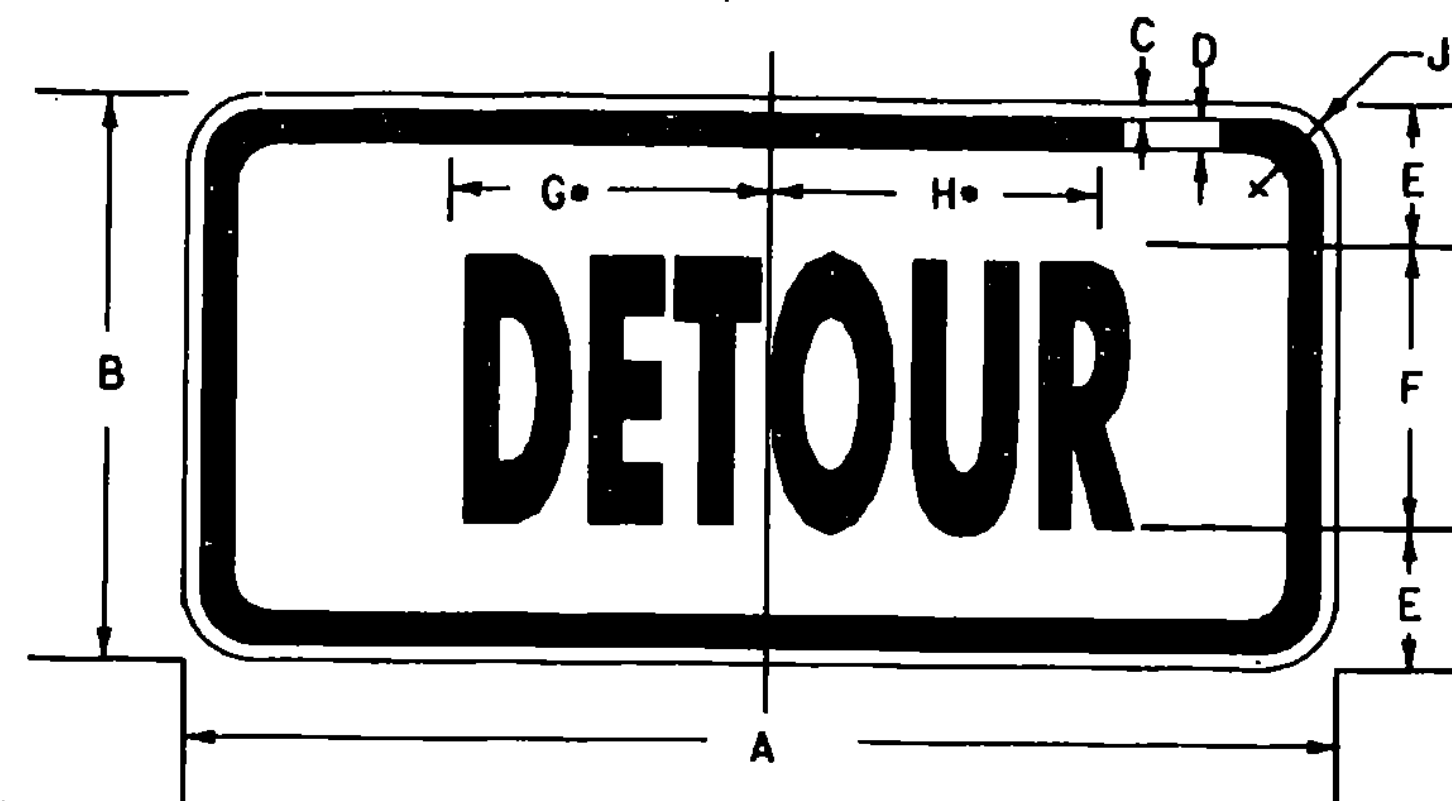


ADD THIS SIGN TO ASSEMBLIES 3, 9, 14, 18, 29, 38, 42 & 52

COLORS:

LEGEND = BLACK
 BACKGROUND = WHITE (REFL., ENG. GRADE)
 MATERIALS (REFER TO STD. E-140)

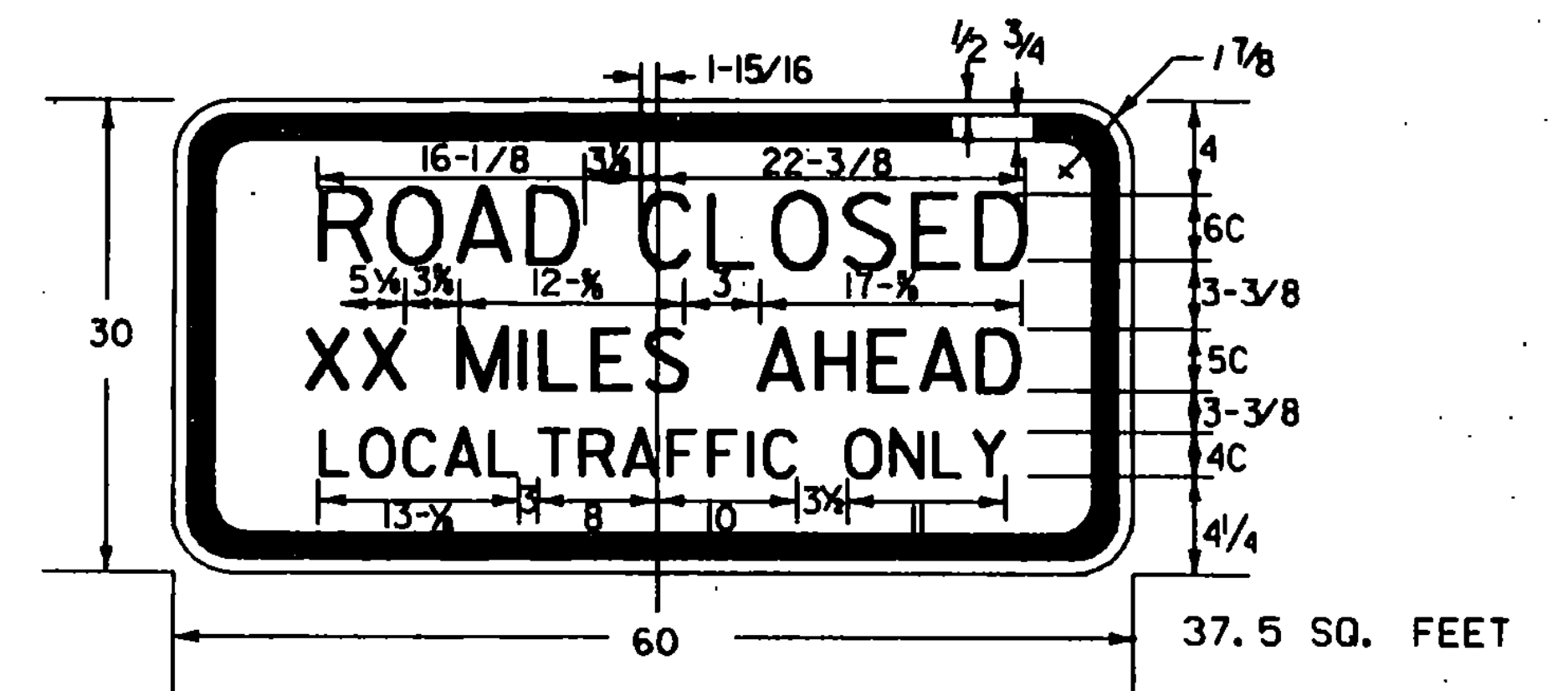


• REDUCE SPACING 20%

SIGN	DIMENSIONS (INCHES)								
	A	B	C	D	E	F	G	H	J
STD. & MIN.	24	12	3/8	5/8	3	68	3-3/16	9-1/16	1-1/2
SPECIAL	30	15	3/8	5/8	3-1/2	88	12-1/4	2-3/4	1-1/2

COLORS

TEXT AND BORDER - BLACK (NON REFL.)
 BACKGROUND - ORANGE (REFL.)
 MATERIALS (REFER TO STD. E-100)



MOUNT ON 2 - 3"/FT FLANGED CHANNEL POSTS

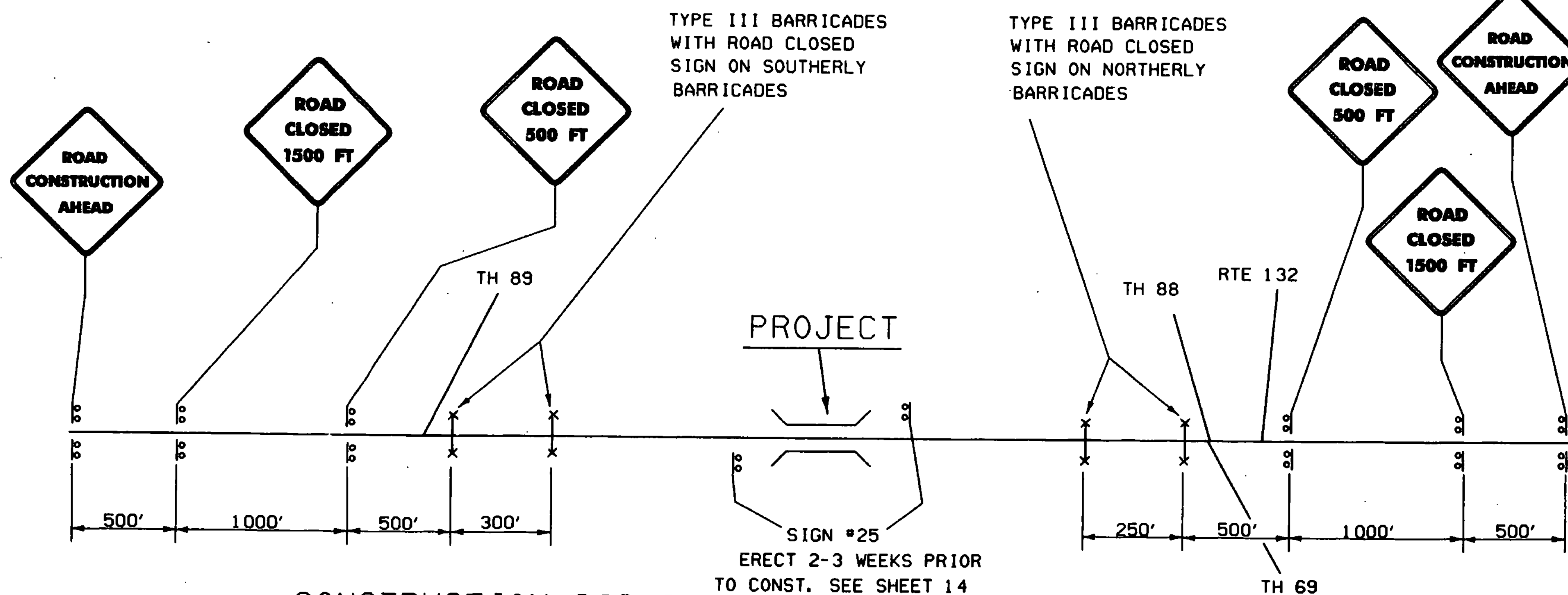
- Ⓣ - 4 MILES
- Ⓣ - 0.2 MILES
- Ⓣ - 4.7 MILES

COLORS

LEGEND - BLACK (NON-REFL.)
 BACKGROUND - WHITE (REFL.)
 MATERIALS (REFER TO STD. E-140) (36' X 48' SIZE)

NOTES:

DETOUR SIGNING SHALL BE PAID AT THE UNIT BID PRICES FOR TRAFFIC SIGNS, TYPE A, MOD., ITEM 675.20 MOD. OR TRAFFIC SIGNS TYPE B MOD, ITEM 675.21 MOD. COSTS SHALL INCLUDE ALL EXPENSE OF FABRICATING, FURNISHING SIGNS & POSTS, ERECTING, MAINTAINING, COVERING, UNCOVERING AND REMOVING THESE SIGNS AND POSTS. PAYMENT FOR DETOUR SIGNING (TYPES A AND B MOD.) WILL BE MADE AT 75% OF THE BID PRICE WHEN THE SIGNS ARE ERECTED AND THE REMAINING 25% WHEN THEY ARE REMOVED. PAYMENT FOR NORMAL CONSTRUCTION SIGNS, BARRICADES, ETC. TO BE SUBSIDIARY TO OTHER ITEMS. THE LARGE GROUND MOUNTED DETOUR SIGNS (8' X 4') SHALL BE ERECTED ON TWO 3" DIA. ALUMINUM TUBES SPACED A MINIMUM OF 7' APART. SIGNS (57) AND (63) ARE TO BE MOUNTED ON TWO 3"/FT. FLANGED CHANNEL POSTS. ALL THE DETOUR ASSEMBLIES LISTED IN THE TABLE ON SHEET 13 WILL BE MOUNTED ON SINGLE 3"/FT. FLANGED CHANNEL POSTS. SIGNS (22), (26) AND (35) ARE TO BE MOUNTED ON TWO 3"/FT. FLANGED CHANNEL POSTS. THE CONTRACTORS ATTENTION IS DIRECTED TO THE FACT THAT ONE (8' X 4') DETOUR SIGN IS TO BE MOUNTED ON THE OVERHEAD SIGN STRUCTURE NEAR THE WEST END OF ROUTE 10A. * LEGAL LOAD AS FOR INTERSTATE HIGHWAYS * SIGNS DETAILED ON SHEET 13 ARE TO BE MOUNTED ON THE ROADSIDE POSTS OF THE INDICATED ASSEMBLIES. ALL CONSTRUCTION AND DETOUR SIGNS TO CONFORM TO THE MATERIALS AS SPECIFIED ON STANDARD E-100. COLORS TO BE AS NOTED IN PLANS. ALL SIGNS THAT ARE BLACK LEGEND ON REFLECTORIZED WHITE BACKGROUND (U. S. 5 SHIELDS, NORTH, SOUTH, AND DIRECTIONAL ARROWS) WILL BE REMOVED AFTER THE BRIDGE IS REOPENED AND DELIVERED TO THE VAOT DISTRICT #4 GARAGE IN THETFORD. THE COST OF REMOVING AND TRANSPORTING THESE SIGNS SHALL NOT BE PAID DIRECTLY BUT SHALL BE SUBSIDIARY TO ITEM 675.20 MOD., TRAFFIC SIGNS, TYPE A, MOD. ALL SIGN POSTS SHALL REMAIN THE PROPERTY OF THE CONTRACTOR.



CONSTRUCTION SIGNS

FOR ADDITIONAL DETAILS SEE STANDARDS E-100, E-101 & E-102

DATUM
 VERTICAL N/A
 HORIZONTAL N/A

ERECT 2-3 WEEKS PRIOR TO CONST. SEE SHEET 14

SURVEYED BY	N/A	DATE	N/A
DRAWN BY	S. N. / S. M.	DATE	12-90
SQUAD LEADER	SHERIDAN		
DESIGN FILE NO.	ZF2(56,50)77B069.DGN		
PRF FILE	77B069SD.PRF	DATE PLOTTED	14-MAY-1992
PROJ. NAME	NORWICH		
PROJ. NO.	BHS 013136		
SHEET	13 OF 70	SHEETS	