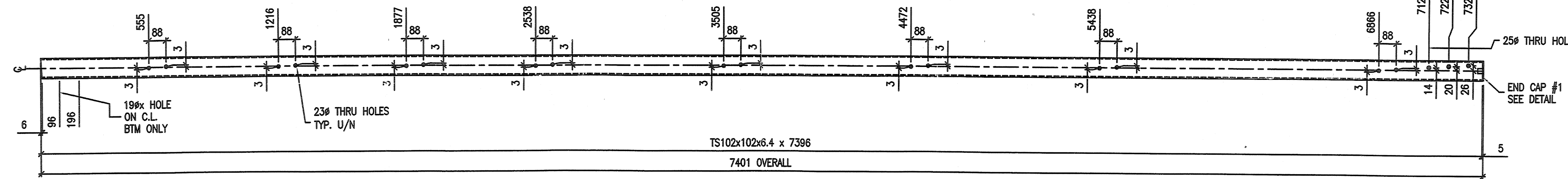
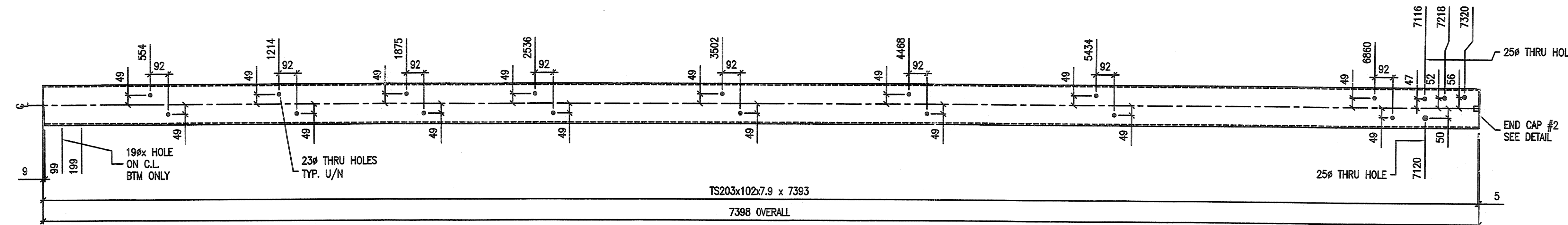


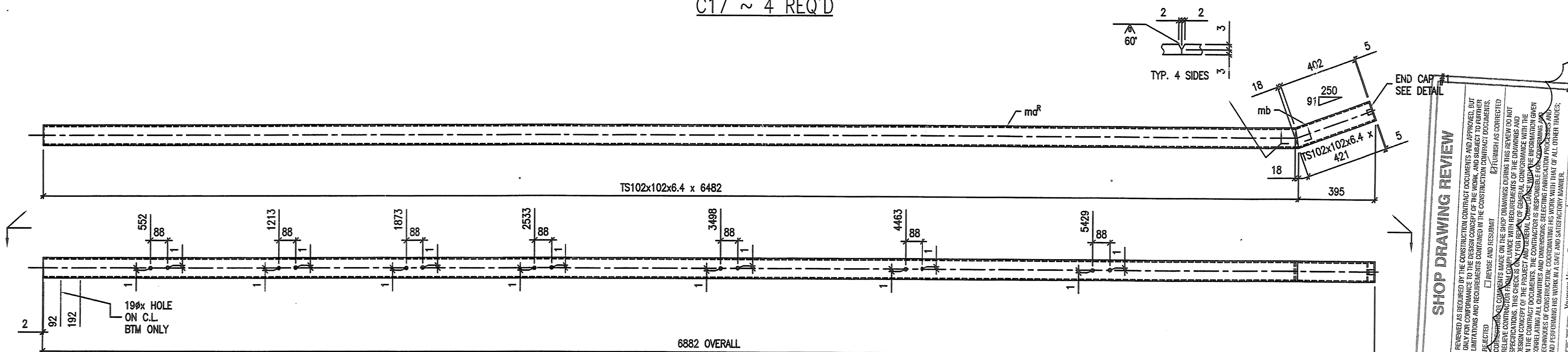
A17 ~ 4 REQ'D



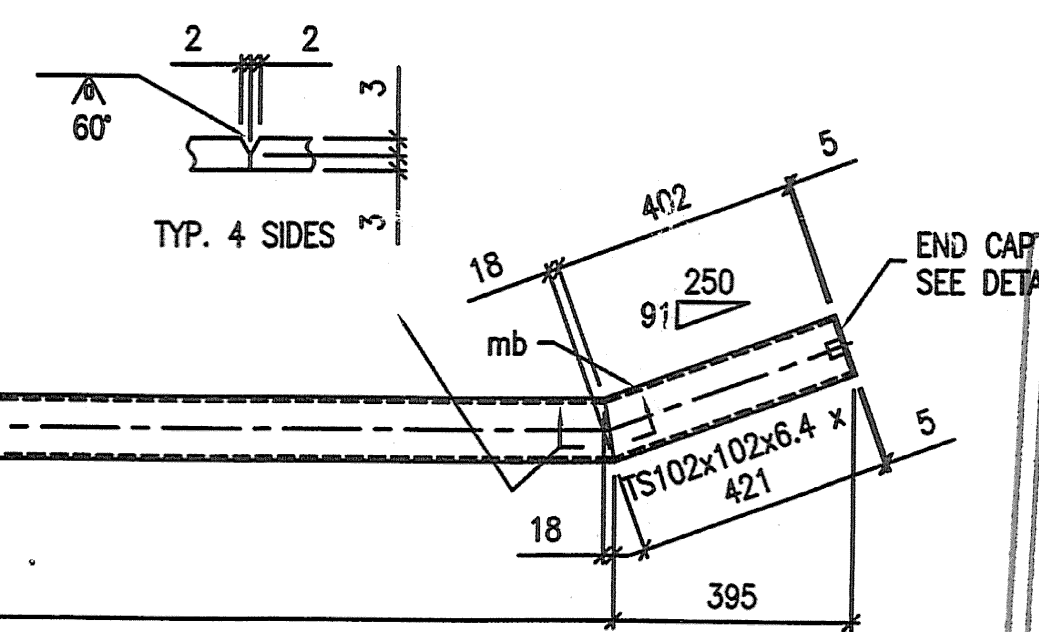
B17 ~ 4 REQ'D



C17 ~ 4 REQ'D



D17^R ~ 2 REQ'D (AS SHOWN)
D17^L ~ 2 REQ'D (OPP HAND)



SHOP DRAWING REVIEW

REVIEWED AS REQUIRED BY THE CONSTRUCTION CONTRACT DOCUMENTS AND APPROVED, BUT NOT GUARANTEED, BY THE ENGINEER. THE ENGINEER'S REVIEW IS LIMITED TO THE TECHNICAL ASPECTS OF THE DRAWING AND DOES NOT CONSTITUTE A WARRANTY OR A GUARANTEE OF THE ACCURACY OF THE INFORMATION CONTAINED THEREIN. THE ENGINEER'S REVIEW IS LIMITED TO THE TECHNICAL ASPECTS OF THE DRAWING AND DOES NOT CONSTITUTE A WARRANTY OR A GUARANTEE OF THE ACCURACY OF THE INFORMATION CONTAINED THEREIN.

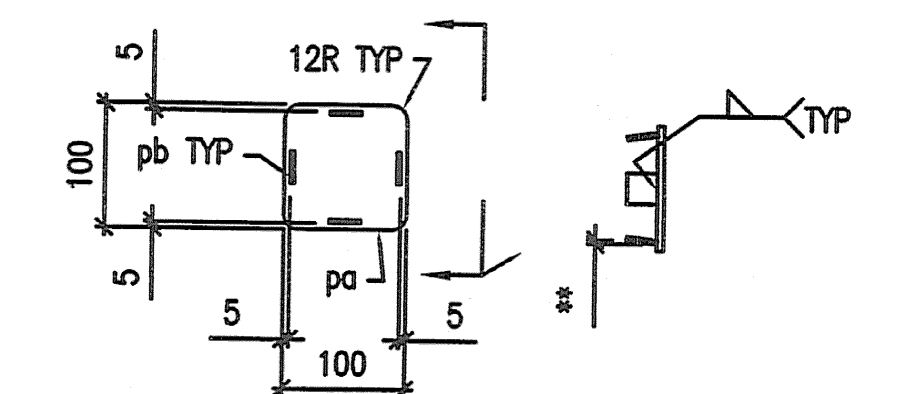
Job Number: 50211
Reviewed By: SMH
Date: 8-18-06

VHB
Vermont Highway Bridge, Inc.
Engineers, Planners, and Architects
100 North Main Street
Burlington, VT 05401

NOTES:

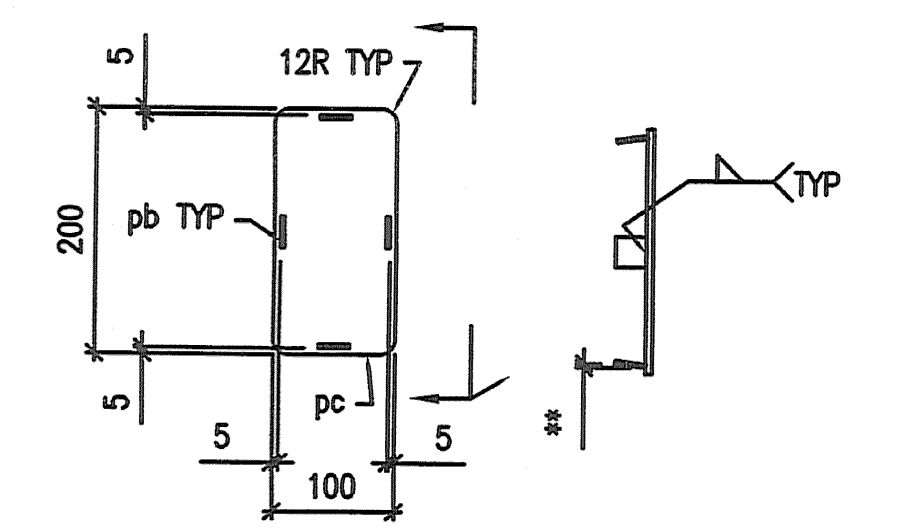
- ALL PARTS TO BE GALVANIZED AFTER FABRICATION IN ACCORDANCE WITH AASHTO M 111M, EXCEPT THAT HARDWARE SHALL MEET THE REQUIREMENTS OF AASHTO M 232M.
- REFERENCE ERECTION DRAWINGS E27.

BILL OF MATERIAL				
MARK	QTY.	MATERIAL	LENGTH	GR. REMARKS
2 A17	4	TS102x102x6.4	7408	GLV. HD B21E
	4	PL5 x 100	100	GLV. SHPD ASTM A709
	16	PL3 x 25	25	GLV. ASTM A709
2 B17	4	TS102x102x6.4	7396	GLV. HD B21E
	4	PL5 x 100	100	GLV. SHPD ASTM A709
	16	PL3 x 25	25	GLV. ASTM A709
2 C17	4	TS203x102x7.9	7393	GLV. HD B21E
	4	PL5 x 100	200	GLV. SHPD ASTM A709
	16	PL3 x 25	25	GLV. ASTM A709
2 D17 R/L	4	RAIL ASSEMBLY		2x/2L
maR/L	4	TS102x102x6.4	6482	GLV. HD 2x/2L, B21E
mb	4	TS102x102x6.4	421	GLV. B21E
pa	4	PL5 x 100	100	GLV. ASTM A709
pb	16	PL3 x 25	25	GLV. ASTM A709
TOTAL WEIGHT:				



END CAP DETAIL #1

** - WELD pb TO pa IN TAPERED POSITION SUCH THAT CAP CAN BE JAMMED INTO RAIL TUBE



END CAP DETAIL #2

** - WELD pb TO pc IN TAPERED POSITION SUCH THAT CAP CAN BE JAMMED INTO RAIL TUBE

MAT'L : ASTM A500 GR.B U.N.	FIELD BOLTS
HOLES : AS NOTED ON DWG.	GRADE: A325
WELD :	
ELECTRODE : E70XX	
PREP : SEE GN-1	
PAINT : SEE GN-1	

REV.	DATE	BY	DESCRIPTION	CHK
3	07/15/06	TS	REV. PER APP.	RC
2	08/07/06	MIN	REV. PER CIANBRO RFI 008 AND APP.	RC
1	28/10/05	KC	REV. PER APPROVAL COMMENTS	BH

WORK NETC 4 RAIL-BRIDGE RAILING - PROJECT NO. BRFO36-1(1)
VT. ROUTE 78 OVER MISSISQUOI BAY - BRIDGE NO. 2
ALBURG - SWANTON, VERMONT

DRAWING		APPROACH RAILING DETAILS
SCALE: N.T.S.	CIANBRO CORPORATION PITTSFIELD MAINE	SHEET 17
SUPERVISOR: T.S.		JOB 050004
DRAWN: SG		
CHECK: BH		