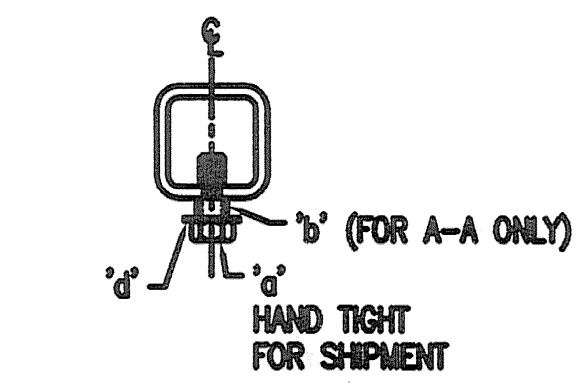
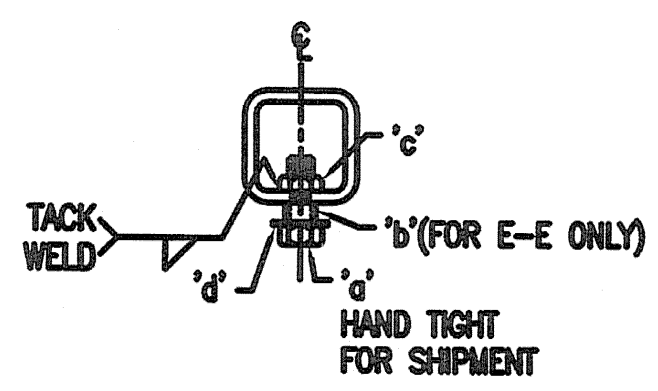


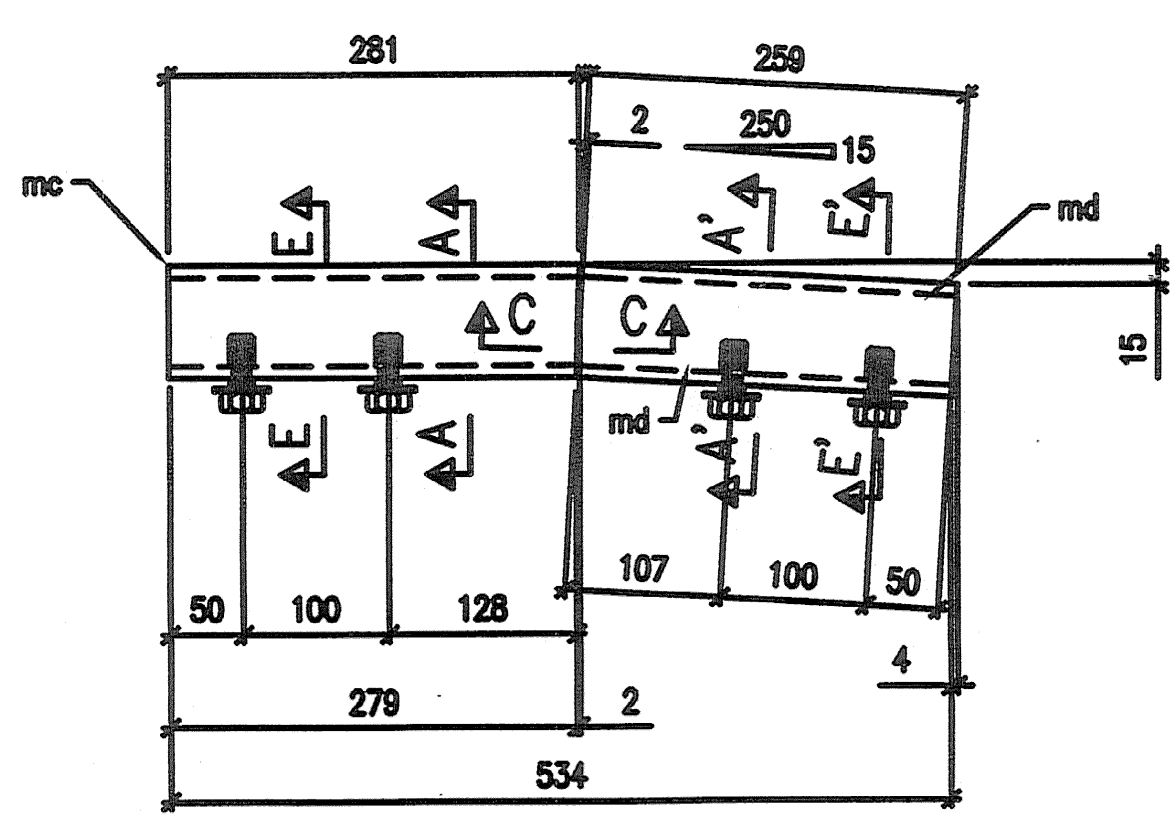
A16 ~ 4 REQ'D



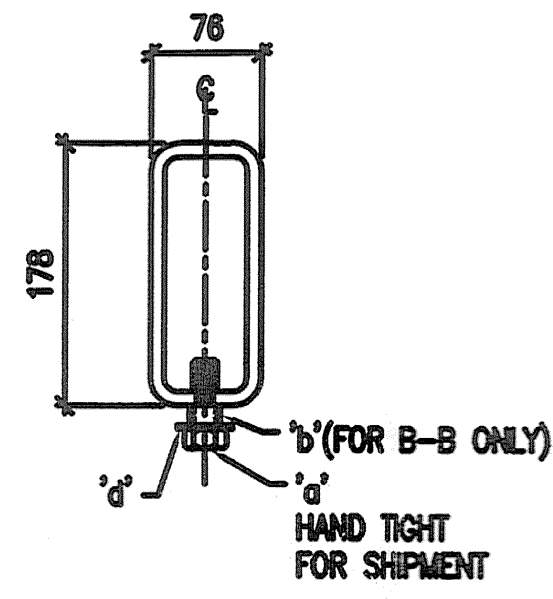
SECTION A-A
SECTION A'-A'



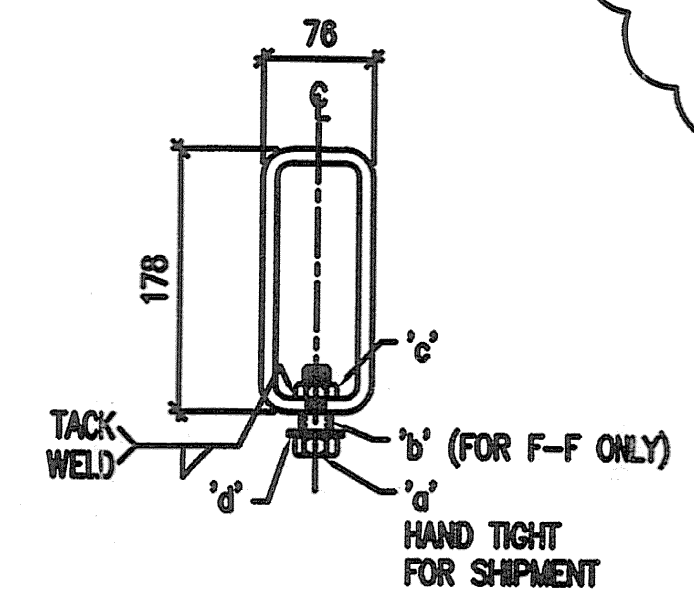
SECTION E-E
SECTION E'-E'



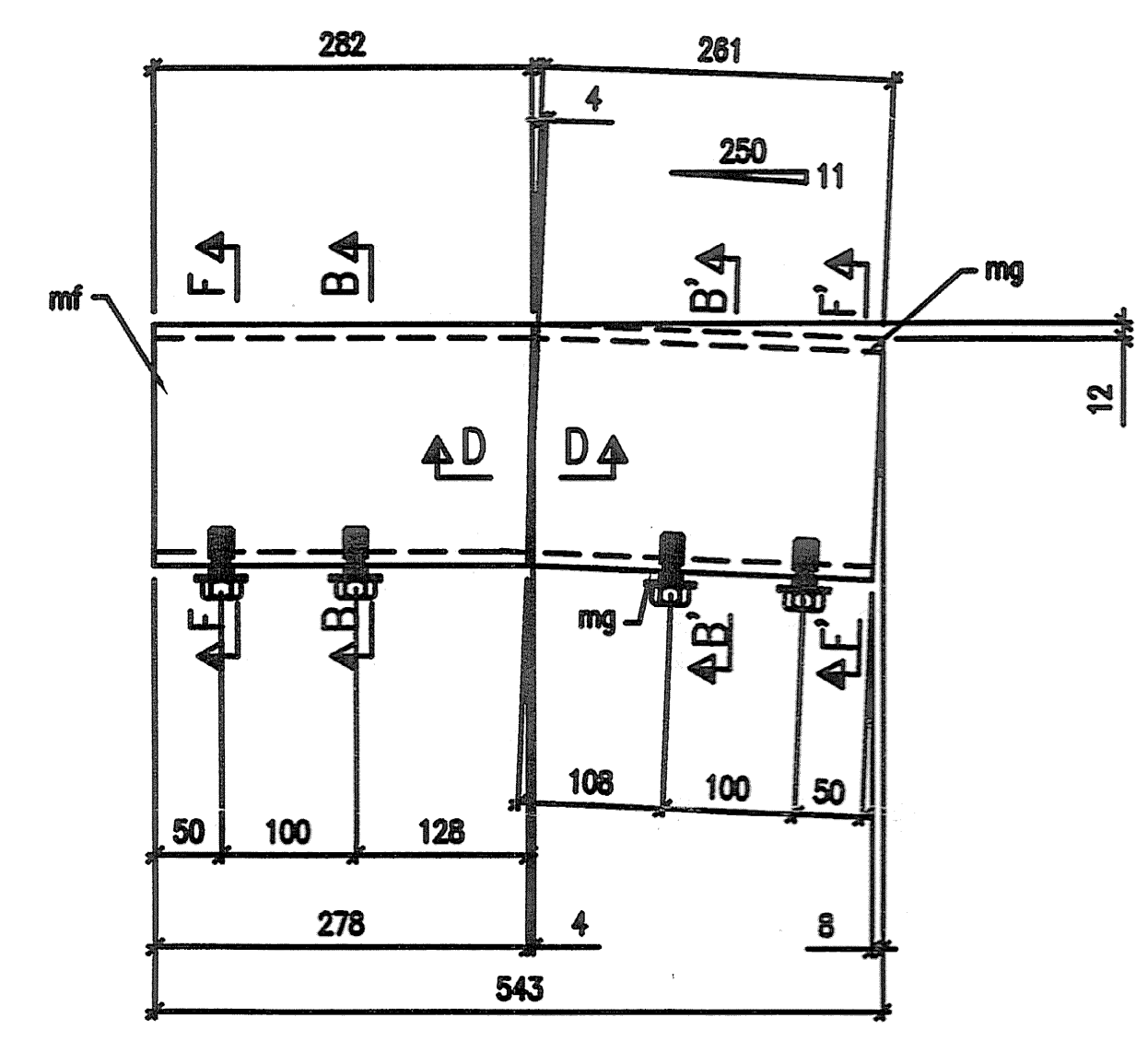
B16 ~ 4 REQ'D



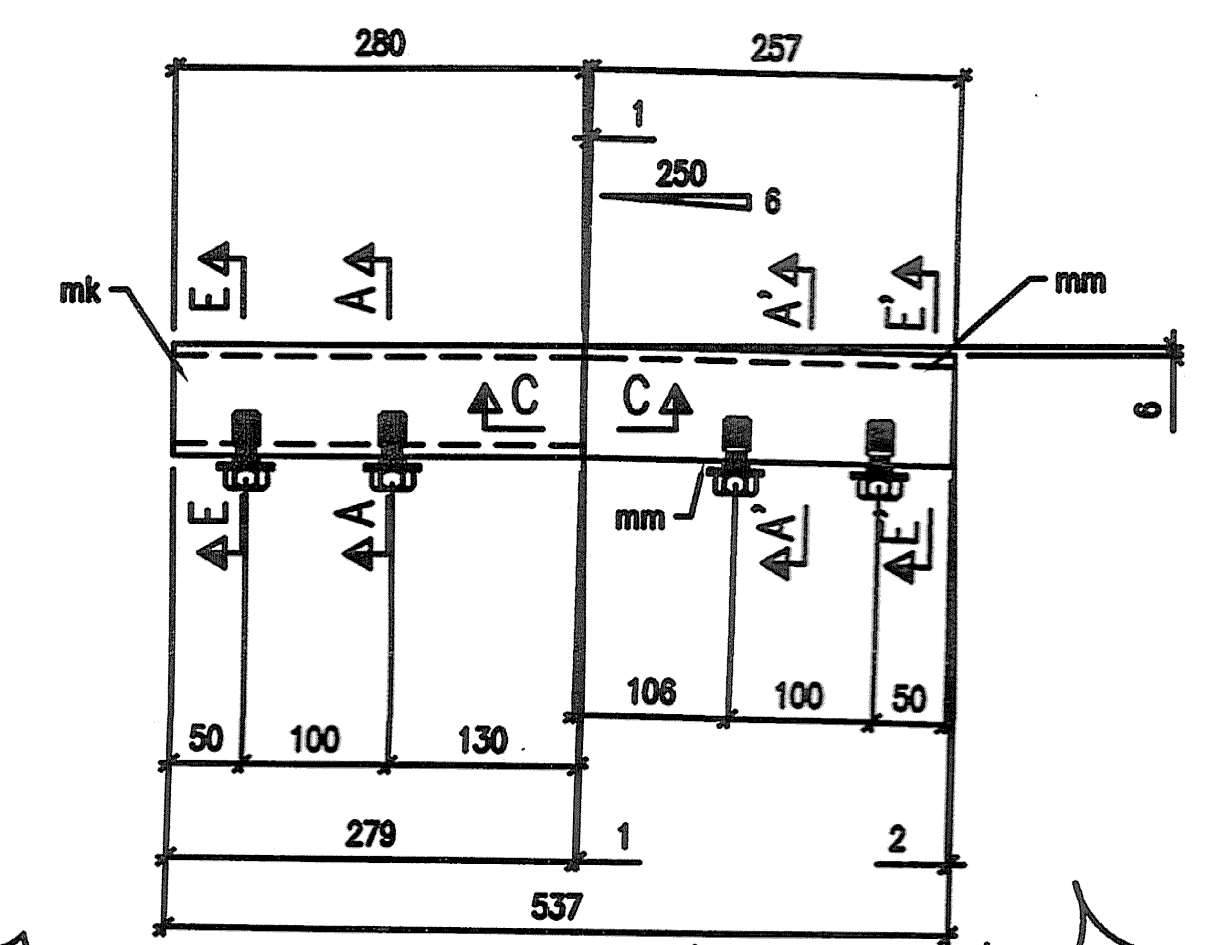
SECTION B-B
SECTION B'-B'



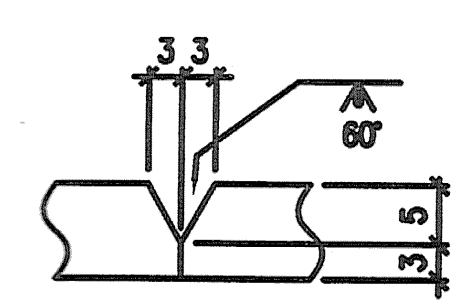
SECTION F-F
SECTION F'-F'



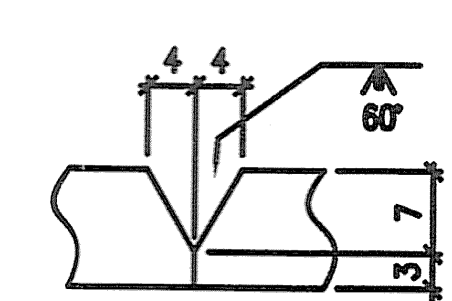
C16 ~ 4 REQ'D



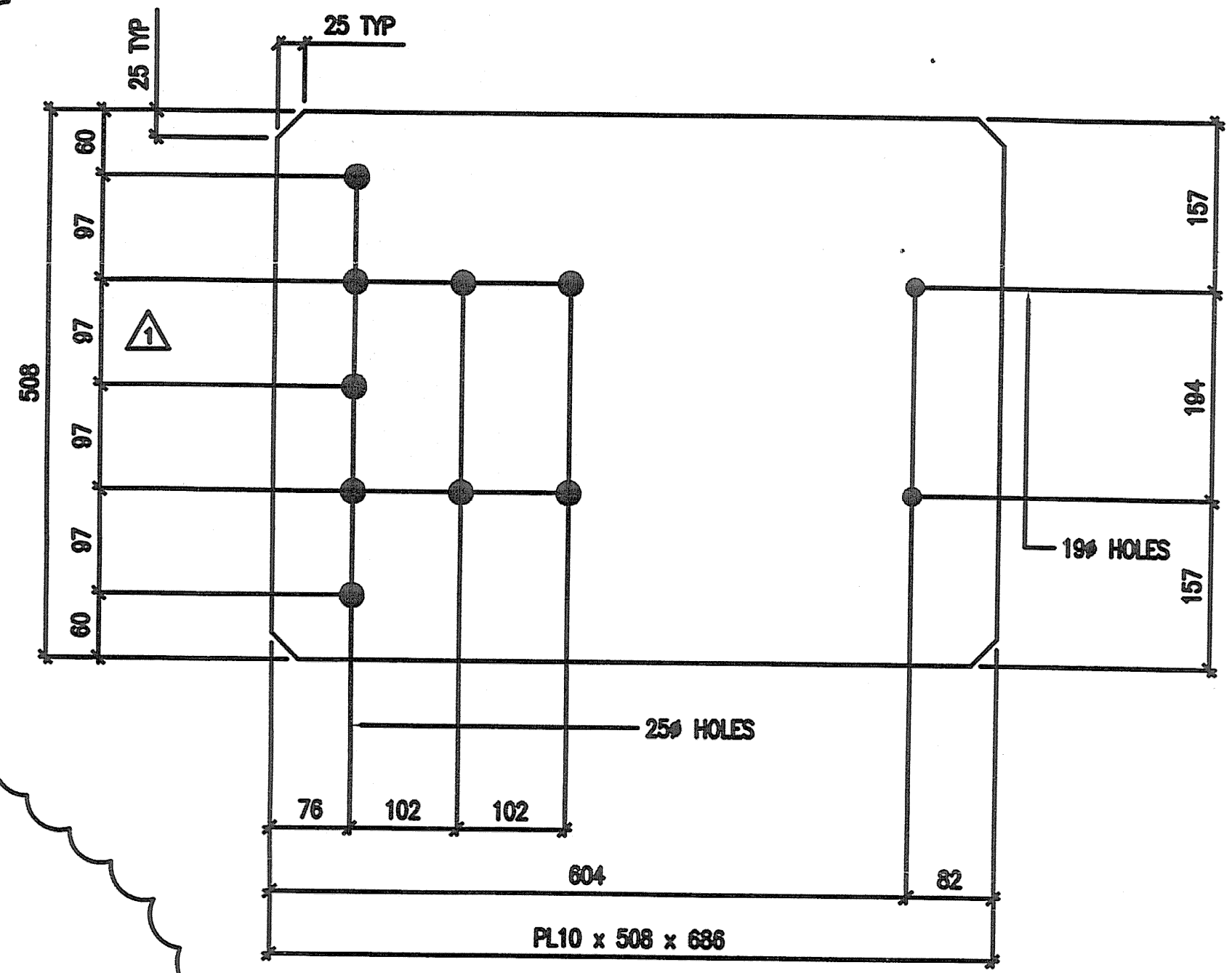
D16 ~ 4 REQ'D



SECTION C-C
TYPICAL 4 SIDES



SECTION D-D
TYPICAL 4 SIDES



F16 ~ 4 REQ'D

SHOP DRAWING REVIEW

REVIEWED AS REQUIRED BY THE CONSTRUCTION CONTRACT DOCUMENTS AND APPROVED, BUT ONLY FOR CONFORMANCE TO THE DESIGN CONCEPT OF THE WORK, AND SUBJECT TO FURTHER LIMITATIONS AND REQUIREMENTS CONTAINED IN THE CONSTRUCTION CONTRACT DOCUMENTS.

REJECTED REUSE AND RESUBMIT FURNISH AS CORRECTED

CORRECTIONS OR COMMENTS MADE ON THE SHOP DRAWINGS DURING THIS REVIEW DO NOT RELIEVE CONTRACTOR FROM COMPLIANCE WITH REQUIREMENTS OF THE DRAWINGS AND SPECIFICATIONS. THIS CHECK IS ONLY FOR REVIEW OF GENERAL CONFORMANCE WITH THE DESIGN CONCEPT OF THE PROJECT AND GENERAL COMPLIANCE WITH THE INFORMATION GIVEN IN THE CONTRACT DOCUMENTS. THE CONTRACTOR IS RESPONSIBLE FOR CORRECTING AND CORRELATING ALL QUANTITIES AND DIMENSIONS; SELECTING FABRICATION PROCESSES AND TECHNIQUES OF CONSTRUCTION; COORDINATING HIS WORK WITH THAT OF ALL OTHER TRADES; AND PERFORMING HIS WORK IN A SAFE AND SATISFACTORY MANNER.

VHB Vanessa Hengen Strudis, Inc.
Engineers, Planners, and Scientists
Six Bedford Farms, Kilton Rd.
Bedford, NH 03110 603 844 0889

Job Number: 50911
Reviewed By: S.M.H.
Date: 5/15/16

NOTES:

- ALL HOLES IN TS TO BE DRILLED AND TAPPED TO SUIT M16 AASHTO M 164M TYPE 1 BOLT UNO.
- ALL PARTS TO BE GALVANIZED AFTER FABRICATION IN ACCORDANCE WITH AASHTO M 111M, EXCEPT THAT HARDWARE SHALL MEET THE REQUIREMENTS OF AASHTO M 232M.
- REFERENCE ERECTION DRAWING E27.

BILL OF MATERIAL					
MARK	QTY.	MATERIAL	LENGTH	GR.	REMARKS
A16	4	APPROACH RAIL SPLICE			
ma	4	TS76x76x7.9	281		TAPPED HO BOLT
mb	4	TS76x76x7.9	261		TAPPED HO BOLT
a	16	M16 BOLT	44		AASHTO M 164M TYPE 1
b	8	20# PIPE SCH.40	13		
c	8	M16 HEX NUT			ASSTN FCSB
d	16	M16 FLAT WASHER			ASSTN FCSB
f	8	M16 BOLT	38		AASHTO M 164M TYPE 1
B16	4	APPROACH RAIL SPLICE			
mc	4	TS76x76x7.9	281		TAPPED HO BOLT
md	4	TS76x76x7.9	259		TAPPED HO BOLT
a	16	M16 BOLT	44		AASHTO M 164M TYPE 1
b	8	20# PIPE SCH.40	13		
c	8	M16 HEX NUT			ASSTN FCSB
d	16	M16 FLAT WASHER			ASSTN FCSB
C16	4	APPROACH RAIL SPLICE			
mf	4	TS178x76x9.5	282		TAPPED HO BOLT
mg	4	TS178x76x9.5	261		TAPPED HO BOLT
a	16	M16 BOLT	44		AASHTO M 164M TYPE 1
b	8	20# PIPE SCH.40	13		
c	8	M16 HEX NUT			ASSTN FCSB
d	16	M16 FLAT WASHER			ASSTN FCSB
D16	4	APPROACH RAIL SPLICE			
mk	4	TS76x76x7.9	280		TAPPED HO BOLT
mn	4	TS76x76x7.9	257		TAPPED HO BOLT
a	16	M16 BOLT	44		AASHTO M 164M TYPE 1
b	8	20# PIPE SCH.40	13		
c	8	M16 HEX NUT			ASSTN FCSB
d	16	M16 FLAT WASHER			ASSTN FCSB
F16	4	PL10 x 508	686		ASSTN FCSB GR 250
TOTAL WEIGHT:					

MAT'L : ASTM A500 GR B U.N. FIELD BOLTS
HOLES : SEE NOTE 1 GRADE: A325
WELD :
ELECTRODE : E70XX
PREP : SEE GN-1
PAINT : SEE GN-1

REV.	DATE	BY	DESCRIPTION	CHK
3	07/15/06	TS	REV. PER APP.	RC
2	08/03/06	MM	REV. PER CHANGE REF 008 AND APP.	RC
1	28/10/05	KC	REV. PER APPROVAL COMMENTS	BH

WORK NETC 4 RAIL-BRIDGE RAILING - PROJECT NO. BRFD36-1(1)
VT. ROUTE 78 OVER MISSISQUOI BAY - BRIDGE NO. 2
ALBURG - SWANTON, VERMONT

DRAWING APPROACH RAIL TUBE SPLICE DETAILS

SCALE: N.T.S. SHEET 16
SUPERVISOR: T.S. CIAMBRO CORPORATION PITTSFIELD MAINE JOB 050004
DRAWING: SG
CHECK: