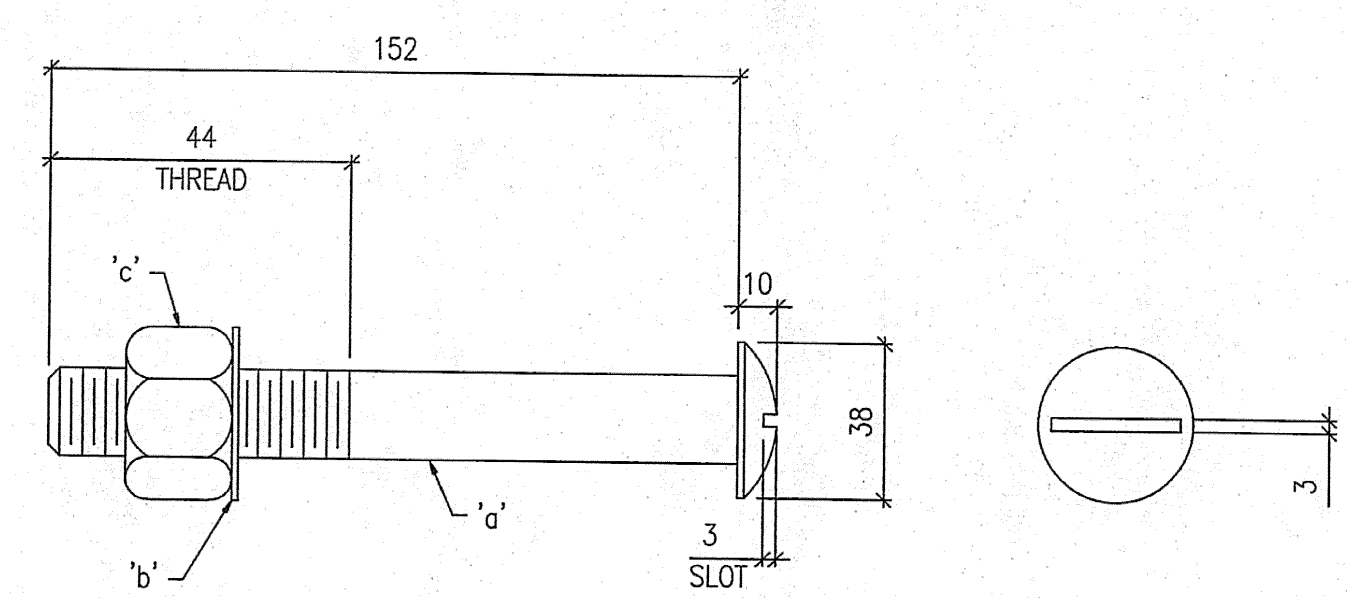
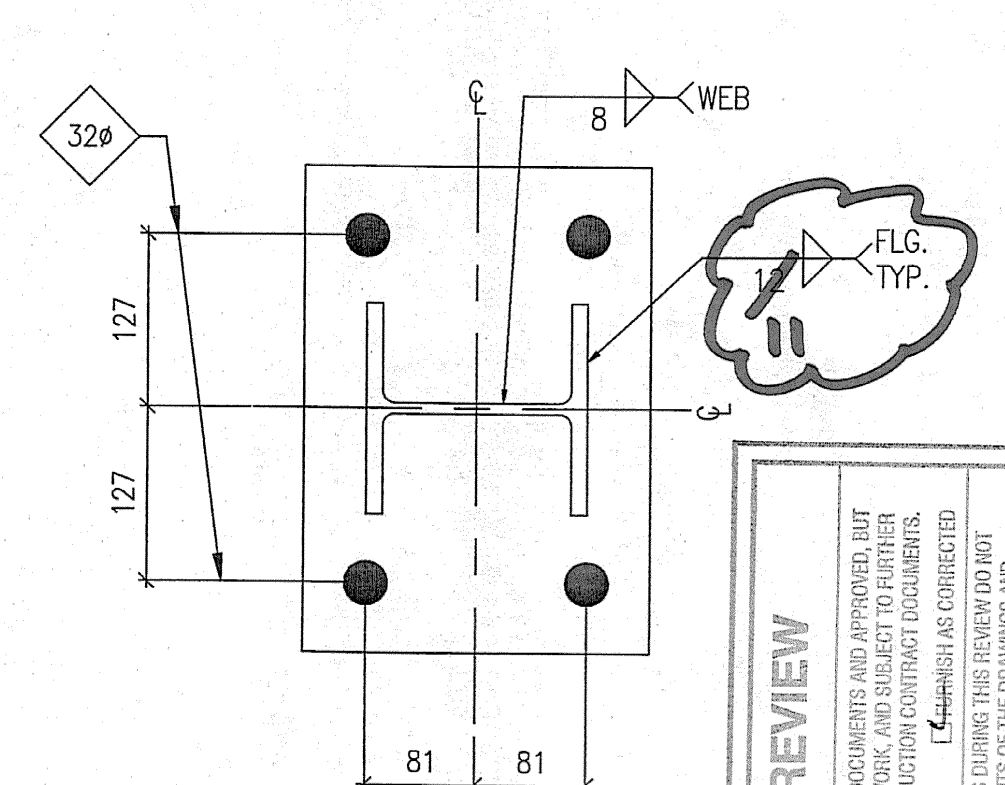
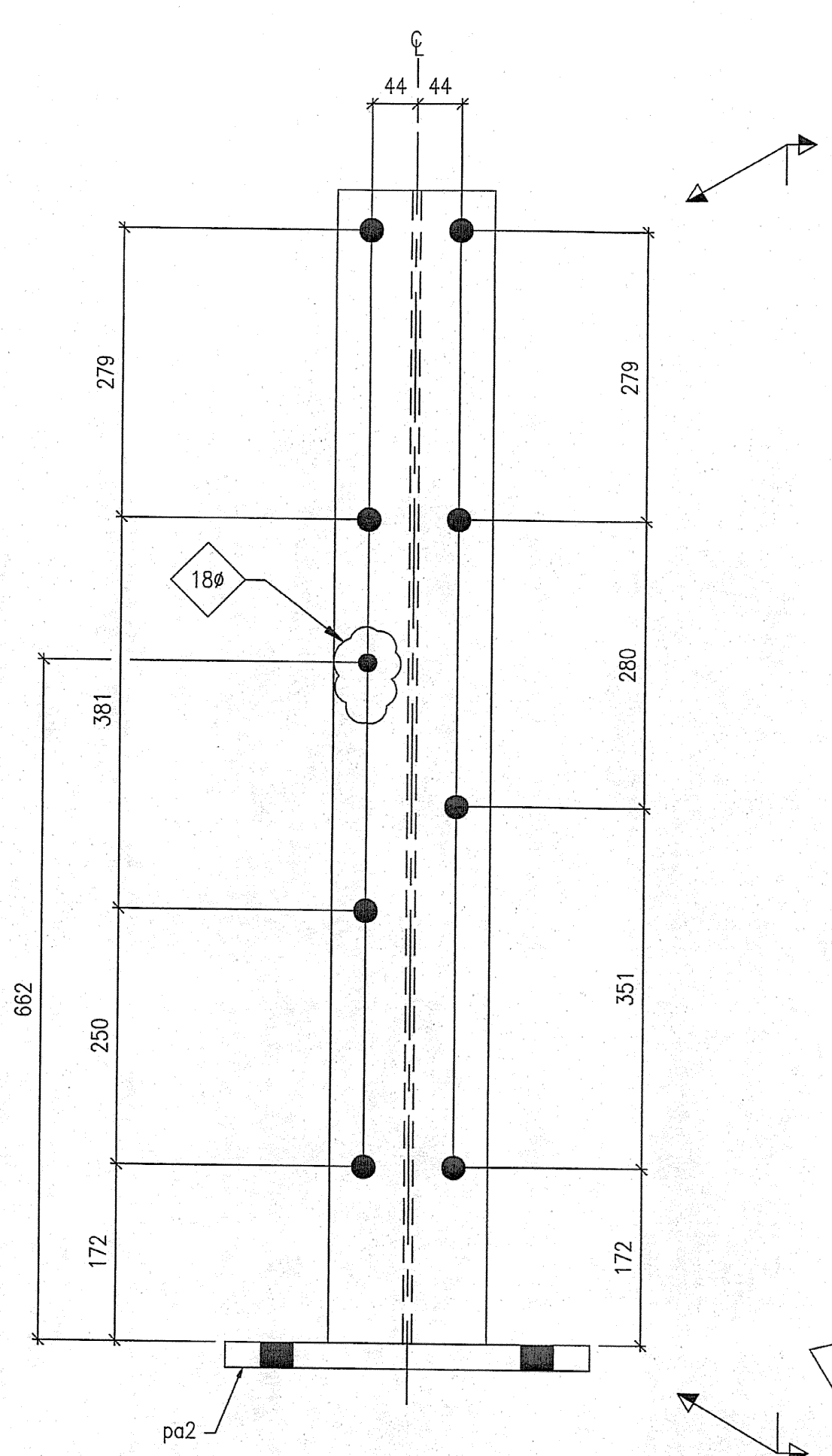


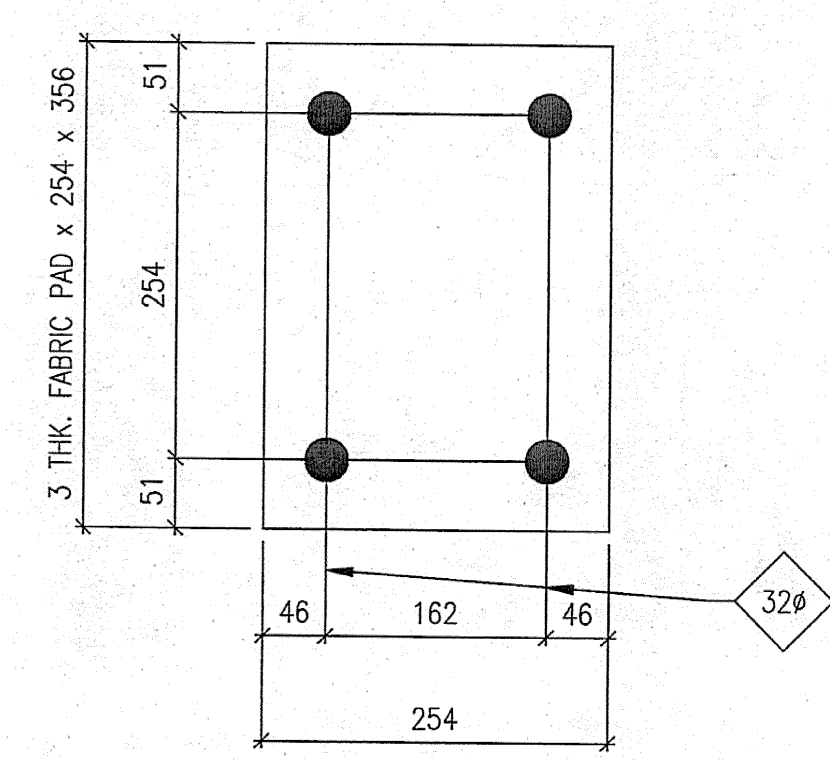
A2 ~ 115 REQ'D



C2 ~ 7328 REQ'D



B2 ~ 115 REQ'D



D2 ~ 916 REQ'D
FABRIC PAD

SHOP DRAWING REVIEW

REVIEWED AS REQUIRED BY THE CONTRACT DOCUMENTS AND APPROVED, BUT NOT GUARANTEEING THE ACCURACY OF THE DRAWINGS OR THE CONFORMANCE OF THE WORK WITH THE REQUIREMENTS OF THE CONTRACT DOCUMENTS. THE CONTRACTOR IS RESPONSIBLE FOR CORRECTING AND REWORKING THE WORK IN A SAFE AND SATISFACTORY MANNER.

DATE: 7-7-05

Job Number: 050111

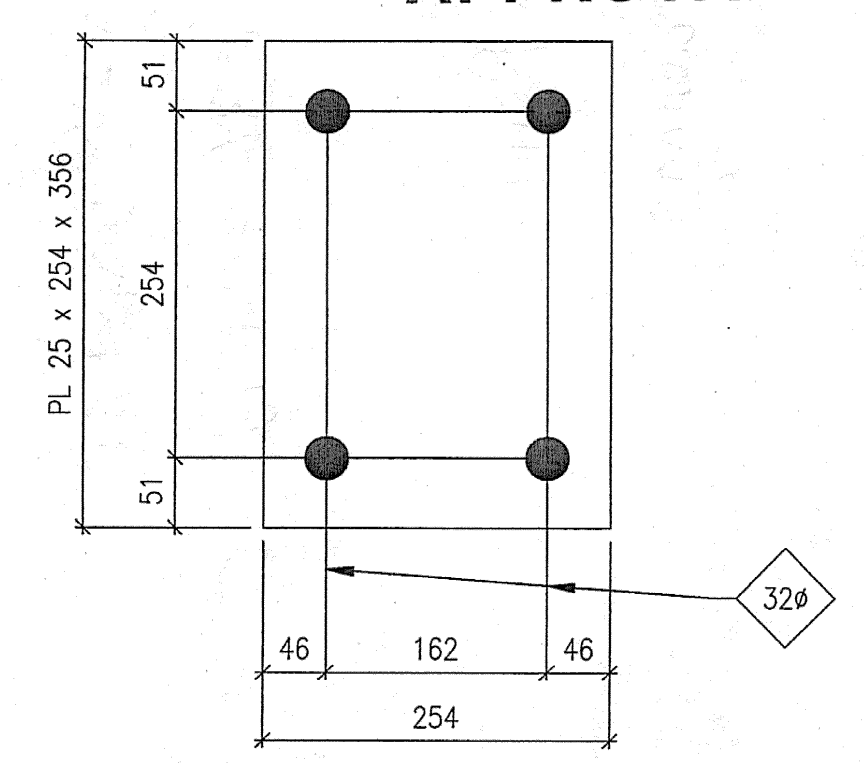
Reviewed By: [Signature]

VHB
Vermont Highway Builders, Inc.
Six Eastmont Drive, Shelburne, VT 05482
Beyond the limits, beyond the road.

- NOTES:
1. ALL PARTS TO BE GALVANIZED AFTER FABRICATION IN ACCORDANCE WITH AASHTO M 111M, EXCEPT THAT HARDWARE SHALL MEET THE REQUIREMENTS OF AASHTO M 232M.
 2. REFERENCE ERECTION DRAWINGS E1 THRU E23.

BILL OF MATERIAL					
MARK	QTY.	MATERIAL	LENGTH	GR.	REMARKS
A2	115	W150 x 37	1120		Galv. HD
pa2	115	PL 25 x 254	356		Galv. HD
B2	115	W150 x 37	1120		Galv. HD
pa2	115	PL 25 x 254	356		Galv. HD
C2	7328	BOLT ASSEMBLY			
a	7328	20φ ROUND HEAD BOLT	152		M 164M TYPE 1 GALV.
b	7328	20φ WASHER			ASTM F436 GALV.
c	7328	20φ LOCK NUT			ASTM A163 GALV.
D2	916	3 THK x 254	356		HD
		MOULDED FABRIC PAD			
TOTAL WEIGHT:					

FOR APPROVAL



DETAIL pa2

REV.	DATE	BY	DESCRIPTION	CHK
1	11/01/05	JM	RE-ISSUED FOR APPROVAL	BH
0	08/06/04	JM	ISSUED FOR APPROVAL	BH

WORK: NETC 4 RAIL-BRIDGE RAILING
VT. ROUTE 78 OVER MISSISSQUIO BAY
ALBURG - SWANTON, VERMONT

DRAWING: BRIDGE RAIL POSTS

SCALE: N.T.S.

CIANBRO CORPORATION
PITTSFIELD MAINE

SHEET: 02
JOB: 050004