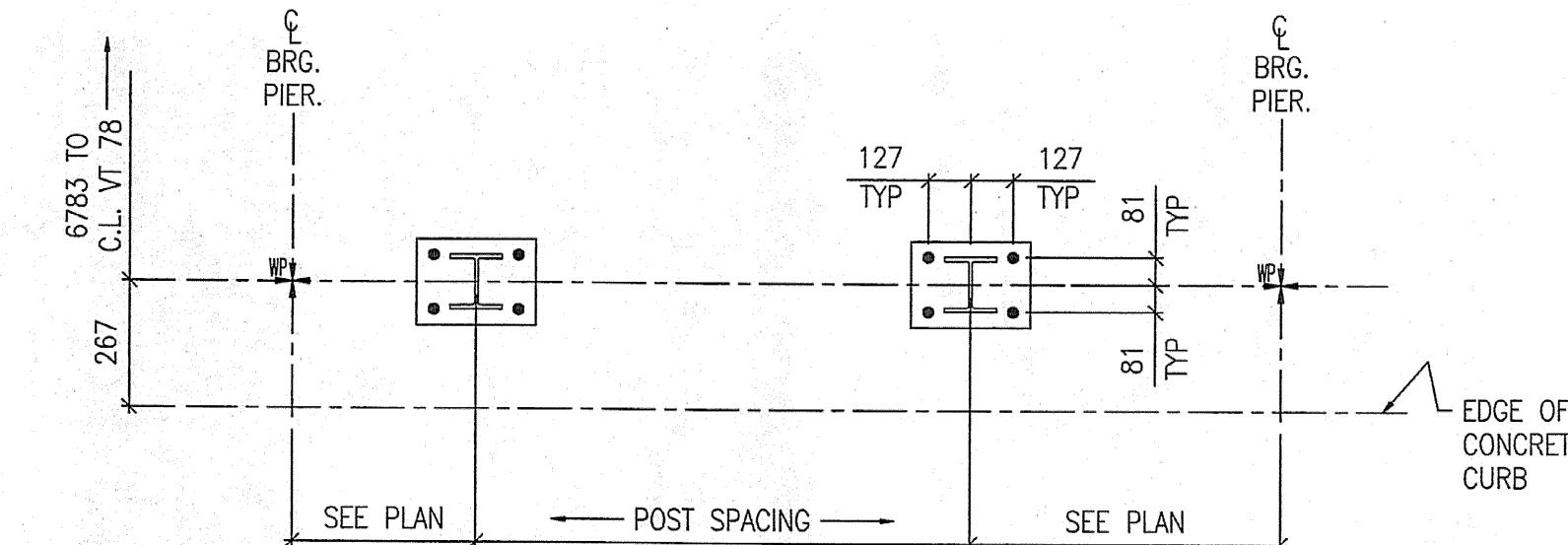
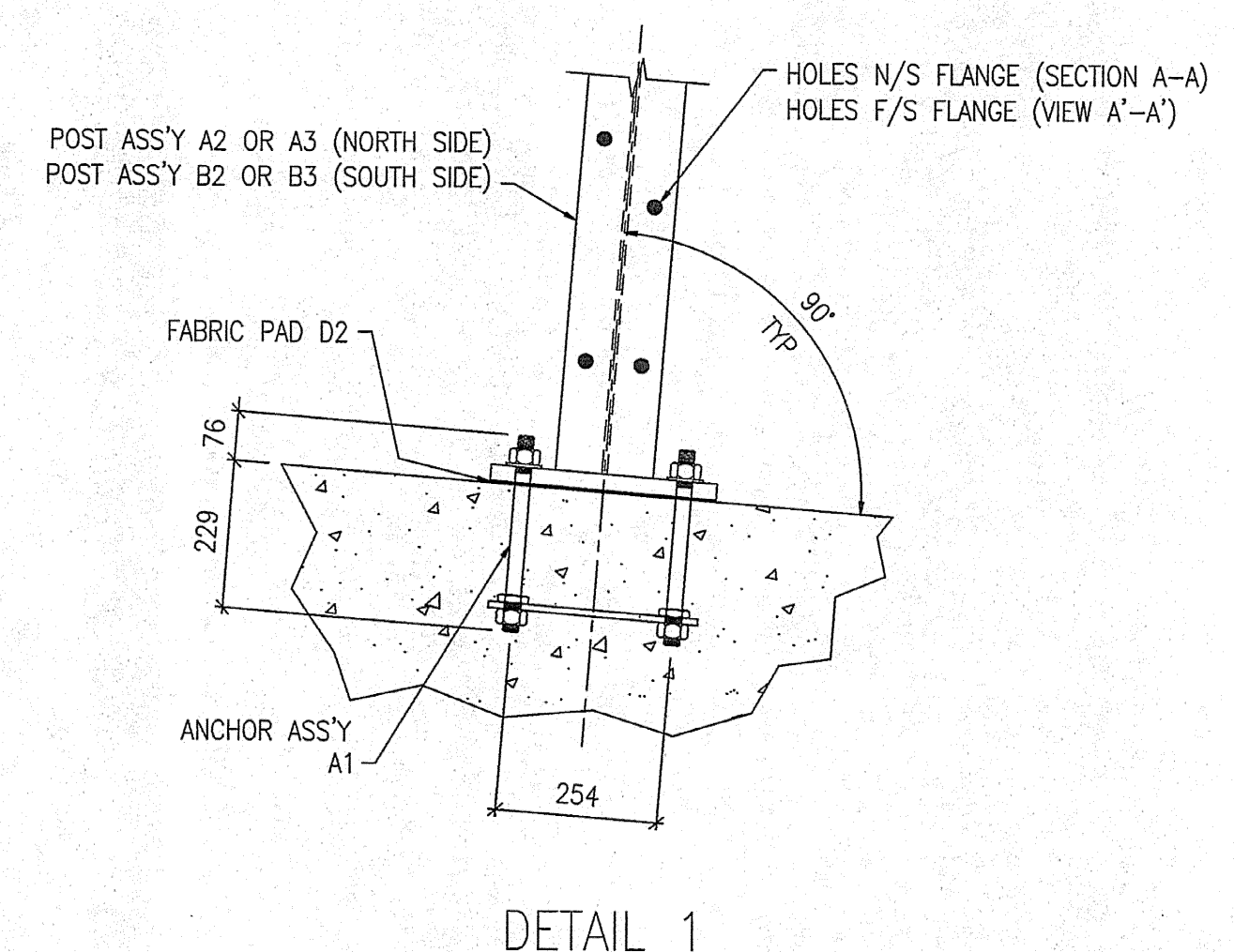
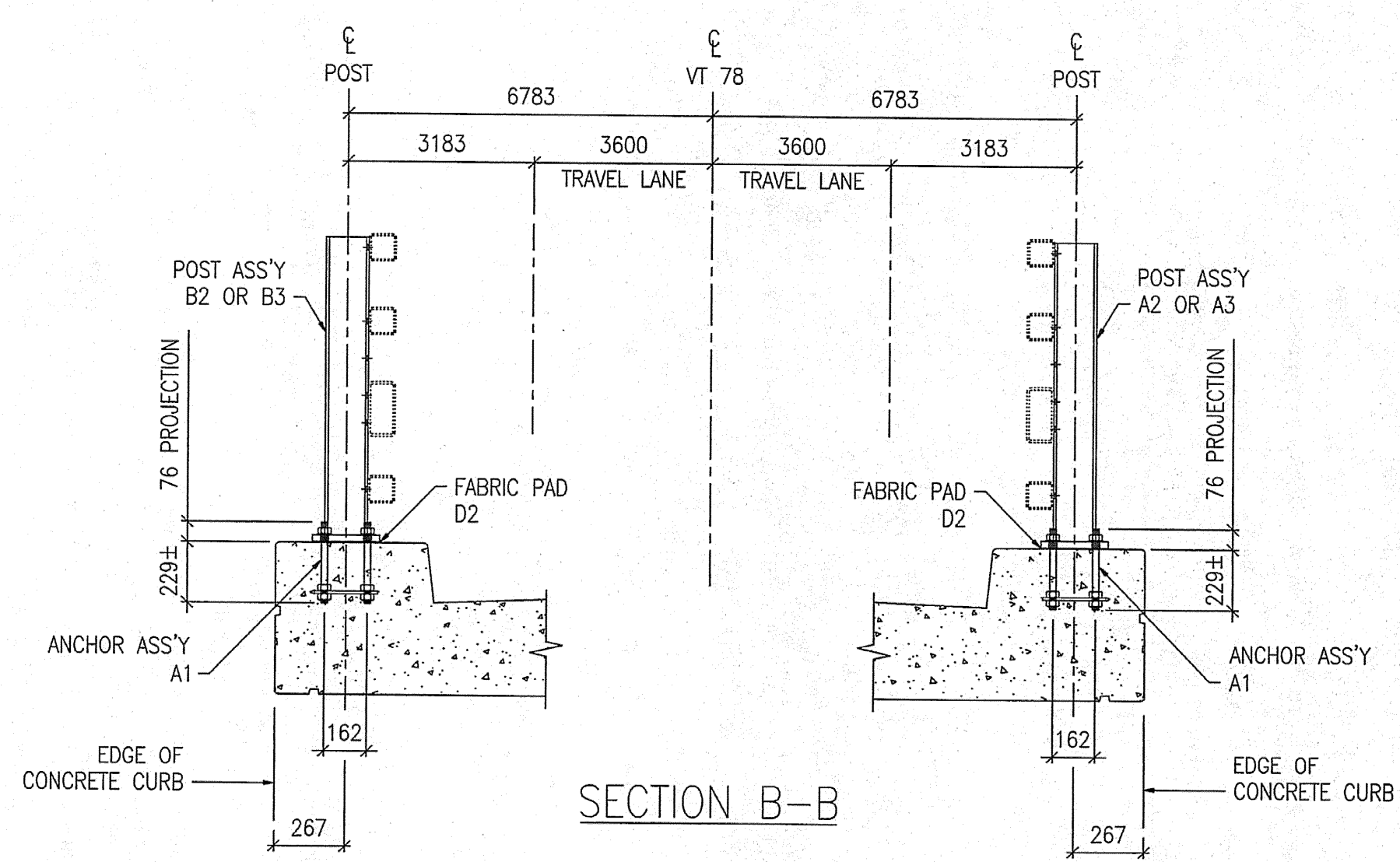
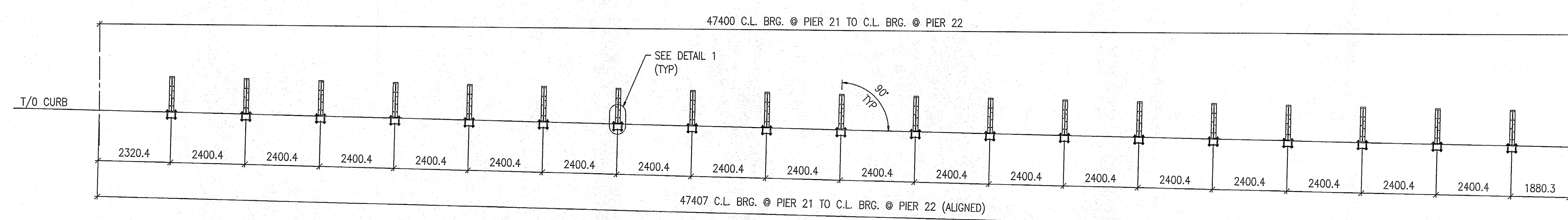


FOR APPROVAL



SHOP DRAWING REVIEW			
<input type="checkbox"/> REVIEWED AS REQUIRED BY THE CONSTRUCTION CONTRACT DOCUMENTS AND APPROVED ONLY FOR CONFORMANCE TO THE DESIGN CONCEPT OF THE WORK, AND SUBJECT TO THE LIMITATIONS AND REQUIREMENTS CONTAINED IN THE CONSTRUCTION CONTRACT DOCUMENTS.	<input type="checkbox"/> REJECTED	<input type="checkbox"/> REVISE AND RESUBMIT	<input checked="" type="checkbox"/> FURNISH AS CORRECTED
CORRECTIONS OR COMMENTS MADE ON THE SHOP DRAWINGS DURING THIS REVIEW SHALL RELIEVE CONTRACTOR FROM COMPLIANCE WITH REQUIREMENTS OF THE DRAWINGS AND SPECIFICATIONS. THIS CHECK IS ONLY FOR REVIEW OF GENERAL CONFORMANCE WITH THE DESIGN CONCEPT OF THE PROJECT AND GENERAL COMPLIANCE WITH THE INFORMATION CONTAINED IN THE CONTRACT DOCUMENTS. THE CONTRACTOR IS RESPONSIBLE FOR CORRECTING AND CORRELATING ALL QUANTITIES AND DIMENSIONS; SELECTING FABRICATION PROCEDURES AND TECHNIQUES OF CONSTRUCTION; COORDINATING HIS WORK WITH THAT OF ALL OTHER CONTRACTORS AND PERFORMING HIS WORK IN A SAFE AND SATISFACTORY MANNER.			
VHB Vanasse Hangen Brustlin, Inc. Engineers, Planners, and Scientists Six Bedford Farms, Kilton Rd. Bedford, NH 03110 603 644 0808		Job Number: 35811 Reviewed By: <i>[Signature]</i> Date: 7-7-05	

- NOTES:
- FOR BRIDGE RAILING ERECTION PLAN SEE DRAWING E26.
 - ALL RAIL POST ASSEMBLIES TO BE ERECTED WITH FLANGE HOLES FACING CENTER OF BRIDGE.

MAT'L : SEE GN-1	FIELD BOLTS		
HOLES : 22ø (7/8") U.N.O.	GRADE:	A325	
WELD :			
ELECTRODE : E70XX			
PREP : SEE GN-1			
PAINT : SEE GN-1			
REV. DATE	BY	DESCRIPTION	CHK
1 11/01/05	JM	RE-ISSUED FOR APPROVAL	BH
0 09/06/04	JM	ISSUED FOR APPROVAL	BH
WORK NETC 4 RAIL-BRIDGE RAILING VT. ROUTE 78 OVER MISSISQUOI BAY ALBURG - SWANTON, VERMONT			
DRAWING RAIL POST ANCHOR PLAN - SPAN 22			
SCALE: N.T.S.	CIANBRO CORPORATION PITTSFIELD MAINE		SHEET E22 Δ
DRAWN: JM			JOB 050004
CHECK: BH			