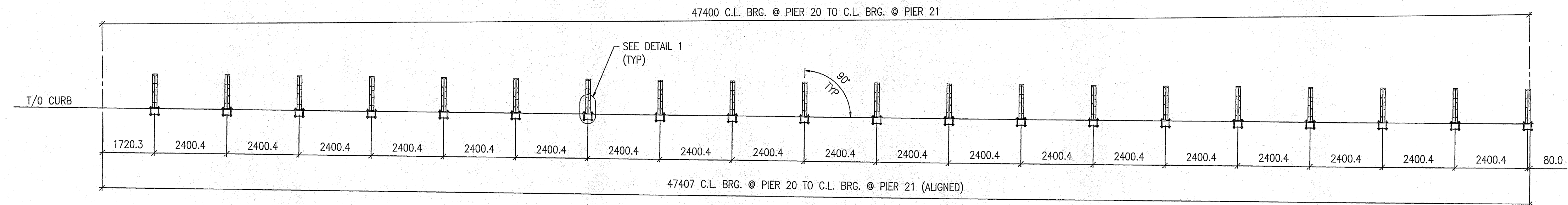
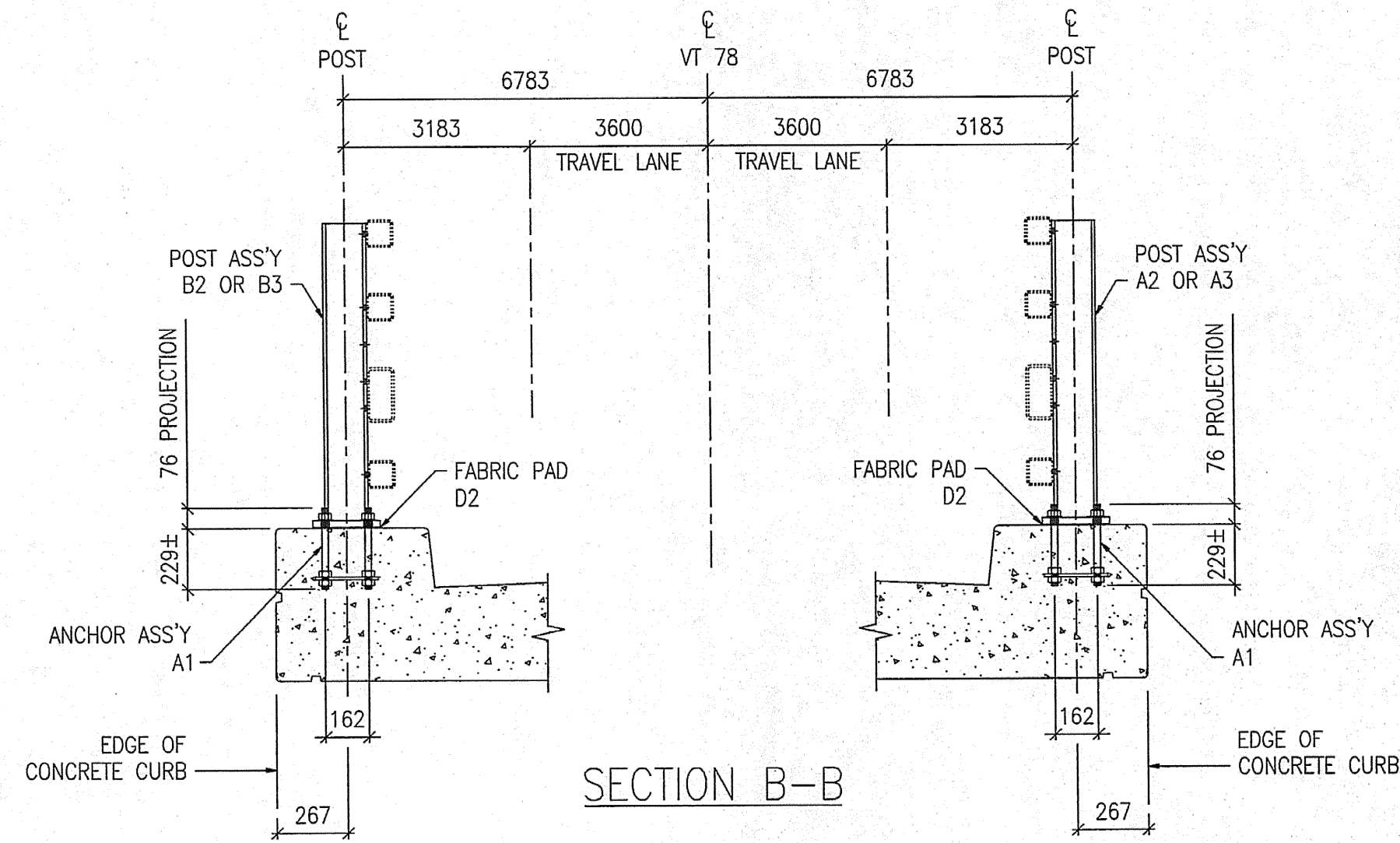


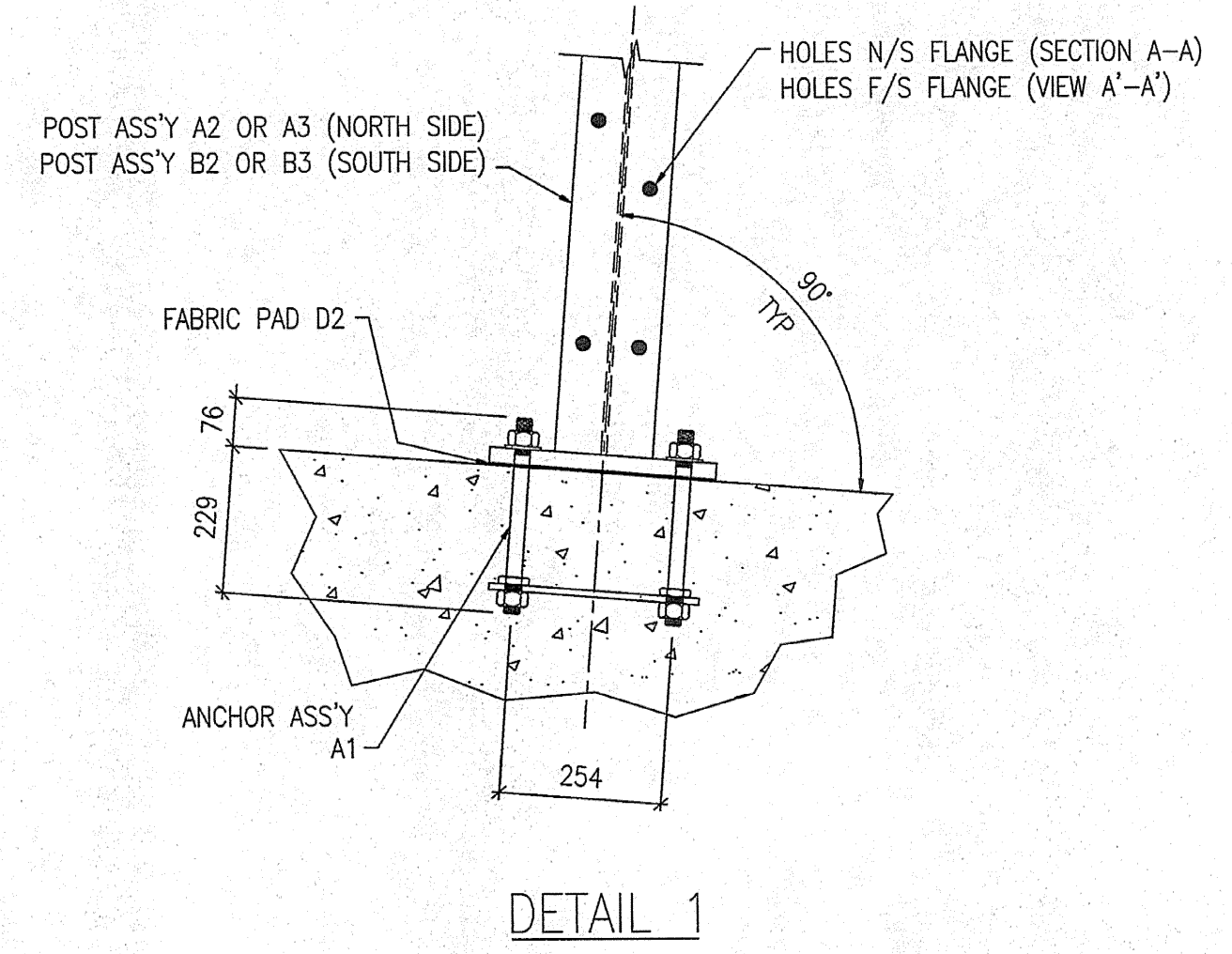
RAIL POST ANCHOR PLAN ~ SPAN 21



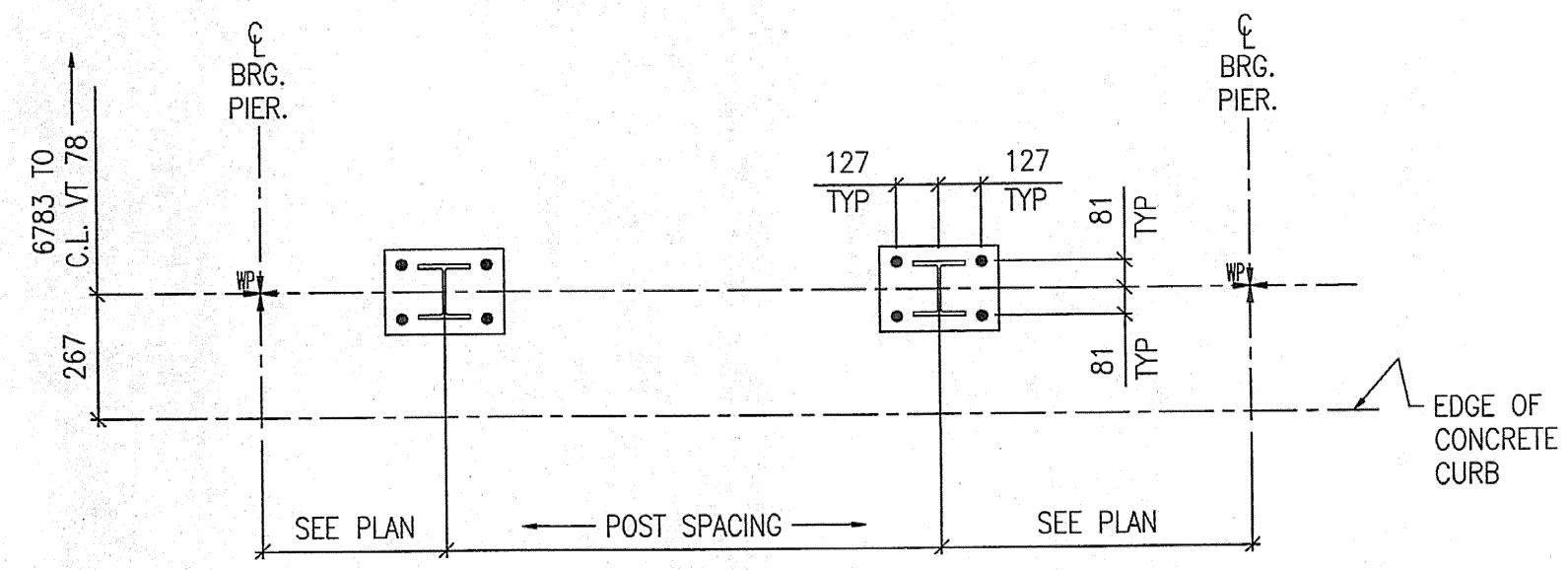
SECTION A-A  
VIEW A'-A' (SIM)



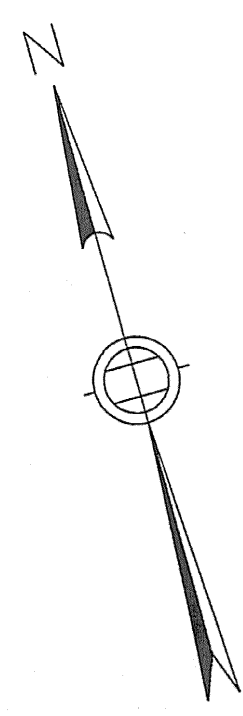
SECTION B-B



DETAIL 1



TYPICAL RAILING POST LAYOUT



**FOR APPROVAL**

SHOP DRAWING REVIEW	
<input type="checkbox"/> REVIEWED AS REQUIRED BY THE CONSTRUCTION CONTRACT DOCUMENTS AND APPROVED, BUT ONLY FOR CONFORMANCE TO THE DESIGN CONCEPT OF THE WORK, AND SUBJECT TO FURTHER LIMITATIONS AND REQUIREMENTS CONTAINED IN THE CONSTRUCTION CONTRACT DOCUMENTS.	<input checked="" type="checkbox"/> FINISH AS CORRECTED
<input type="checkbox"/> REJECTED	<input type="checkbox"/> REVISE AND RESUBMIT
CORRECTIONS OR COMMENTS MADE ON THE SHOP DRAWINGS DURING THIS REVIEW DO NOT RELIEVE CONTRACTOR FROM COMPLIANCE WITH REQUIREMENTS OF THE DRAWINGS AND SPECIFICATIONS. THIS CHECK IS ONLY FOR REVIEW OF GENERAL CONFORMANCE WITH THE DESIGN CONCEPT OF THE PROJECT AND GENERAL COMPLIANCE WITH THE INFORMATION GIVEN IN THE CONTRACT DOCUMENTS. THE CONTRACTOR IS RESPONSIBLE FOR CONFIRMING AND CORRELATING ALL QUANTITIES AND DIMENSIONS; SELECTING FABRICATION PROCESSES AND TECHNIQUES OF CONSTRUCTION; COORDINATING HIS WORK WITH THAT OF ALL OTHER TRADES; AND PERFORMING HIS WORK IN A SAFE AND SATISFACTORY MANNER.	
<b>VHB</b> Venasse Hangan Brustlin, Inc. Engineers, Planners, and Scientists 60 Woodland Farm, Milton Rd. Bedford, NH 02811 603 644 0088	Job Number: 50011 Reviewed By: JMM Date: 7-7-05

- NOTES:
- FOR BRIDGE RAILING ERECTION PLAN SEE DRAWING E26.
  - ALL RAIL POST ASSEMBLIES TO BE ERECTED WITH FLANGE HOLES FACING CENTER OF BRIDGE.

MAT'L : SEE GN-1		FIELD BOLTS		
HOLES : 229 (7/8") U.N.O.		GRADE:	A325	
WELD :				
ELECTRODE : E70XX				
PREP : SEE GN-1				
PAINT : SEE GN-1				
1	11/01/05	JM	RE-ISSUED FOR APPROVAL	BH
0	09/06/04	JM	ISSUED FOR APPROVAL	BH
REV.	DATE	BY	DESCRIPTION	CHK
WORK NETC 4 RAIL-BRIDGE RAILING VT. ROUTE 78 OVER MISSISSQUOI BAY ALBURG - SWANTON, VERMONT				
DRAWING RAIL POST ANCHOR PLAN - SPAN 21				
SCALE:	N.T.S.	SHEET		E21
DRAWN:	JM	CIANBRO CORPORATION		JOB
CHECK:	BH	PITTSFIELD MAINE		050004