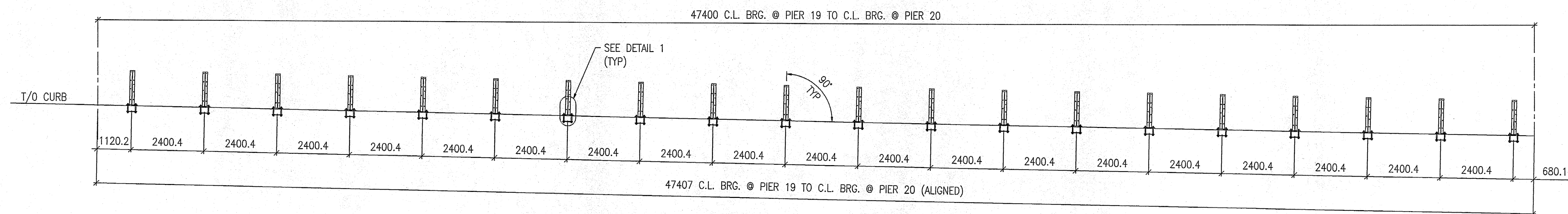
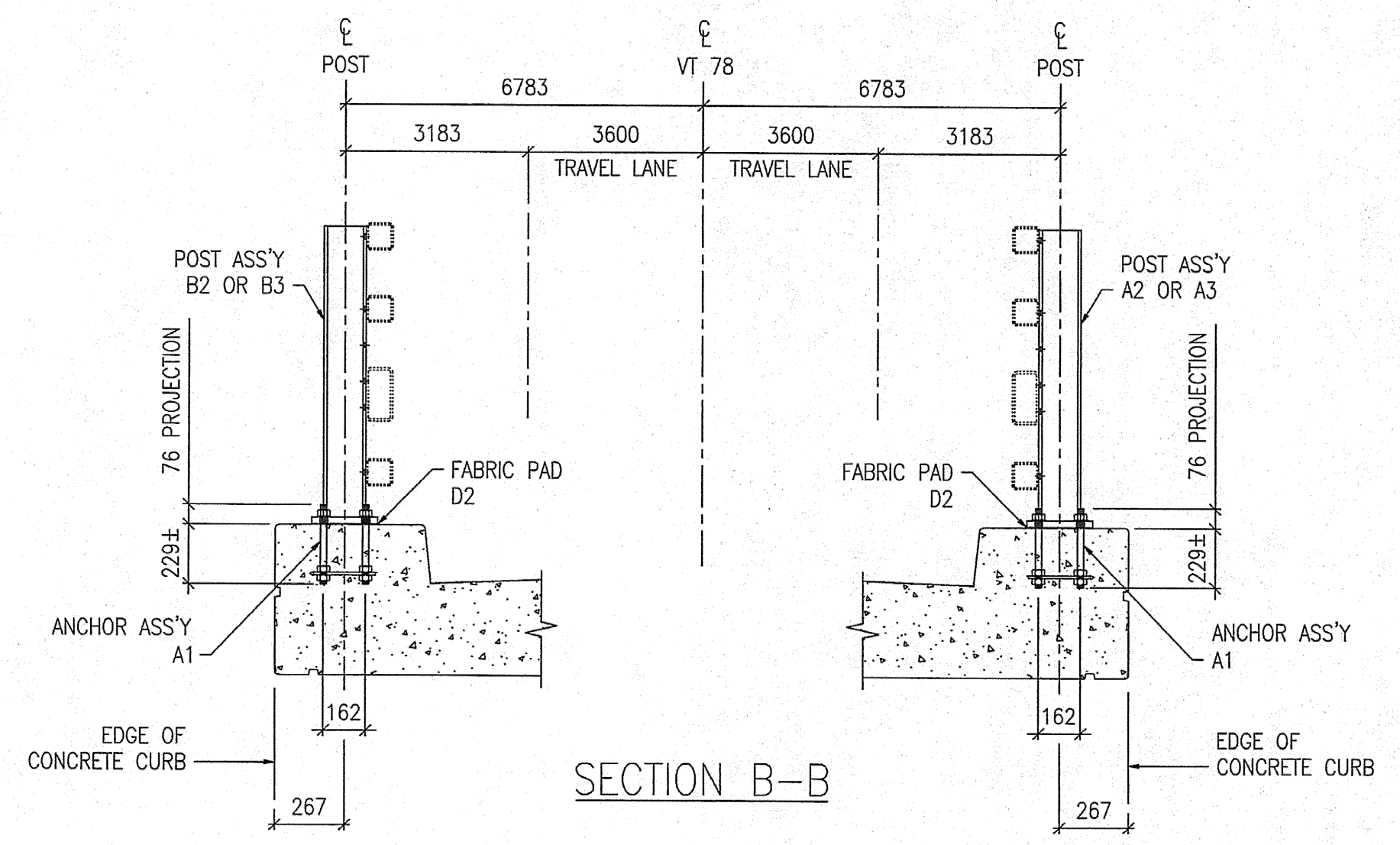


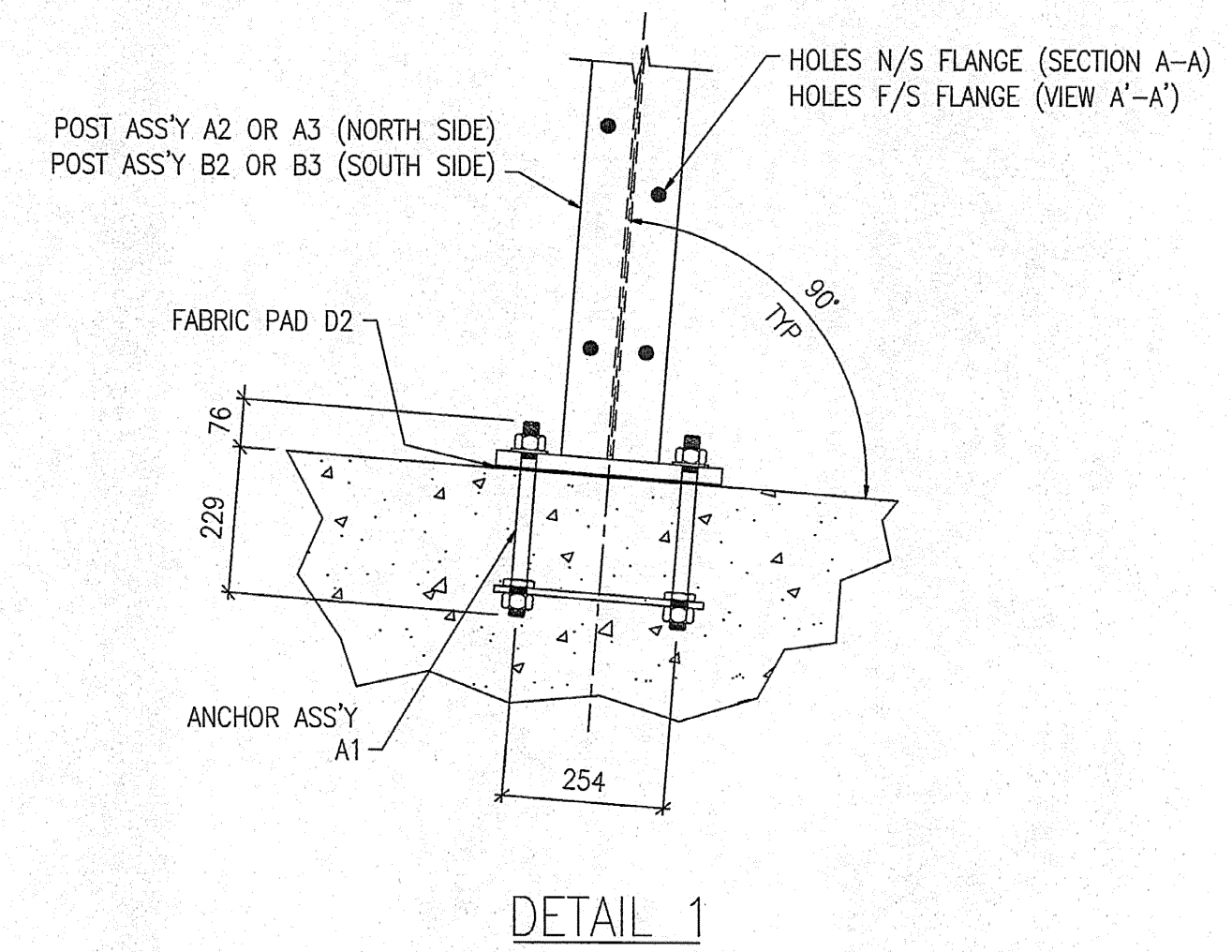
**FOR APPROVAL**



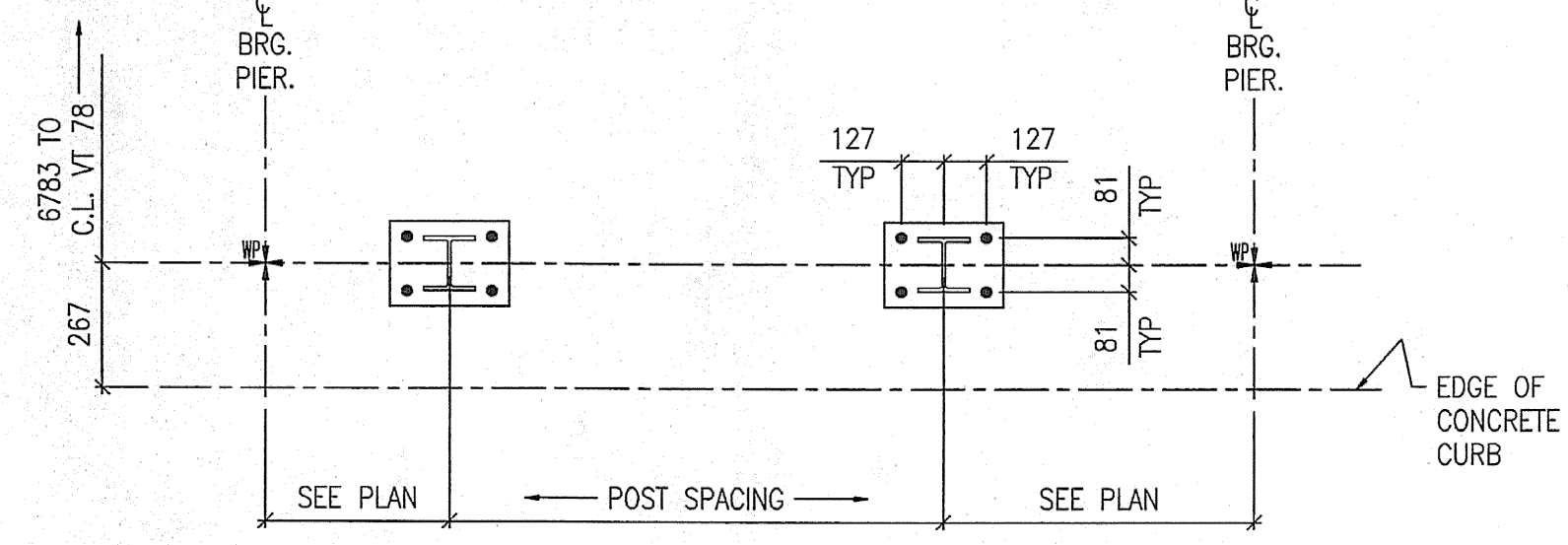
SECTION A-A  
VIEW A'-A' (SIM)



SECTION B-B



DETAIL 1



TYPICAL RAILING POST LAYOUT

**SHOP DRAWING REVIEW**

REVIEWED AS REQUIRED BY THE CONSTRUCTION CONTRACT DOCUMENTS AND APPROVED, BUT ONLY FOR CONFORMANCE TO THE DESIGN CONCEPT OF THE WORK, AND SUBJECT TO FURTHER LIMITATIONS AND REQUIREMENTS CONTAINED IN THE CONSTRUCTION CONTRACT DOCUMENTS.

REJECTED  REVISE AND RESUBMIT  FURNISH AS CORRECTED

CORRECTIONS OR COMMENTS MADE ON THE SHOP DRAWINGS DURING THIS REVIEW DO NOT RELIEVE CONTRACTOR FROM COMPLIANCE WITH REQUIREMENTS OF THE DRAWINGS AND SPECIFICATIONS. THIS CHECK IS ONLY FOR REVIEW OF GENERAL CONFORMANCE WITH THE DESIGN CONCEPT OF THE PROJECT AND GENERAL COMPLIANCE WITH THE INFORMATION GIVEN IN THE CONTRACT DOCUMENTS. THE CONTRACTOR IS RESPONSIBLE FOR CONTROLLING AND CORRELATING ALL QUANTITIES AND DIMENSIONS; SELECTING FABRICATION PROCESSES AND TECHNIQUES OF CONSTRUCTION; COORDINATING HIS WORK WITH THAT OF ALL OTHER TRADES; AND PERFORMING HIS WORK IN A SAFE AND SATISFACTORY MANNER.

**VHB** Vanasse Hangen Brustlin, Inc.  
Engineers, Planners, and Scientists  
Six Bedford Farms, Milton Pk.  
Bedford, NH 03110 603 544 0660

Job Number: 50411  
Reviewed By: [Signature]  
Date: 7-7-05

- NOTES:**
- FOR BRIDGE RAILING ERECTION PLAN SEE DRAWING E26.
  - ALL RAIL POST ASSEMBLIES TO BE ERECTED WITH FLANGE HOLES FACING CENTER OF BRIDGE.

MATERIAL: SEE GN-1		FIELD BOLTS		
HOLES: 22Ø (7/8") U.N.O.		GRADE: A325		
WELD:				
ELECTRODE: E70XX				
PREP: SEE GN-1				
PAINT: SEE GN-1				
1	11/01/05	JM	RE-ISSUED FOR APPROVAL	BH
0	09/06/04	JM	ISSUED FOR APPROVAL	BH
REV.	DATE	BY	DESCRIPTION	CHK
WORK: NETC 4 RAIL-BRIDGE RAILING VT. ROUTE 78 OVER MISSISQUOI BAY ALBURG - SWANTON, VERMONT				
DRAWING: RAIL POST ANCHOR PLAN - SPAN 20				
SCALE: N.T.S.	CIANBRO CORPORATION PITTSFIELD MAINE		SHEET E20	
DRAWN: JM			JOB 050004	
CHECK: BH				