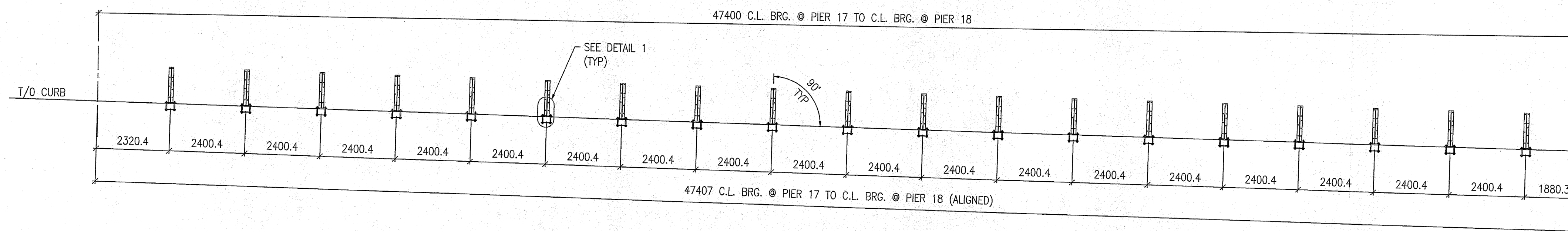
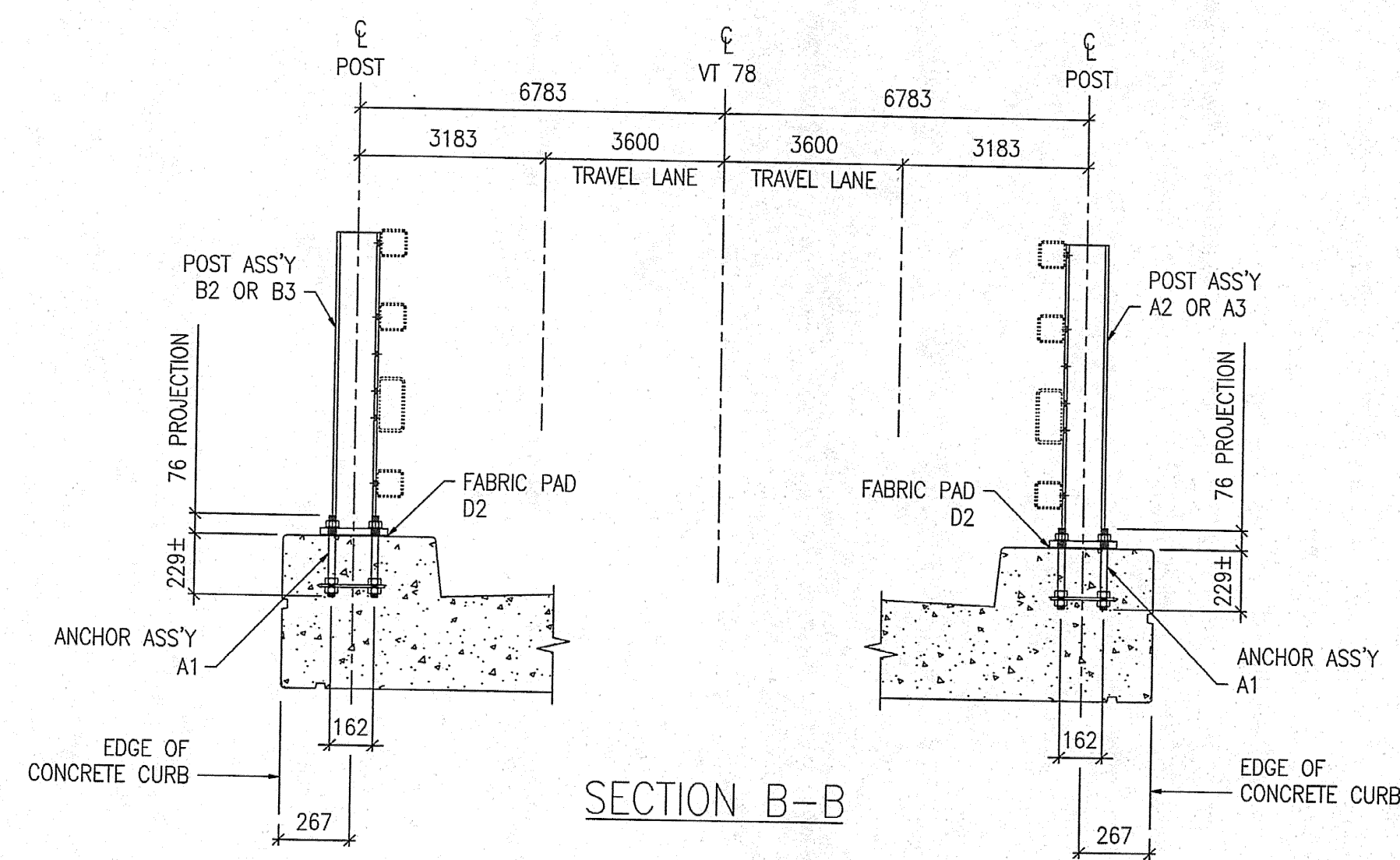


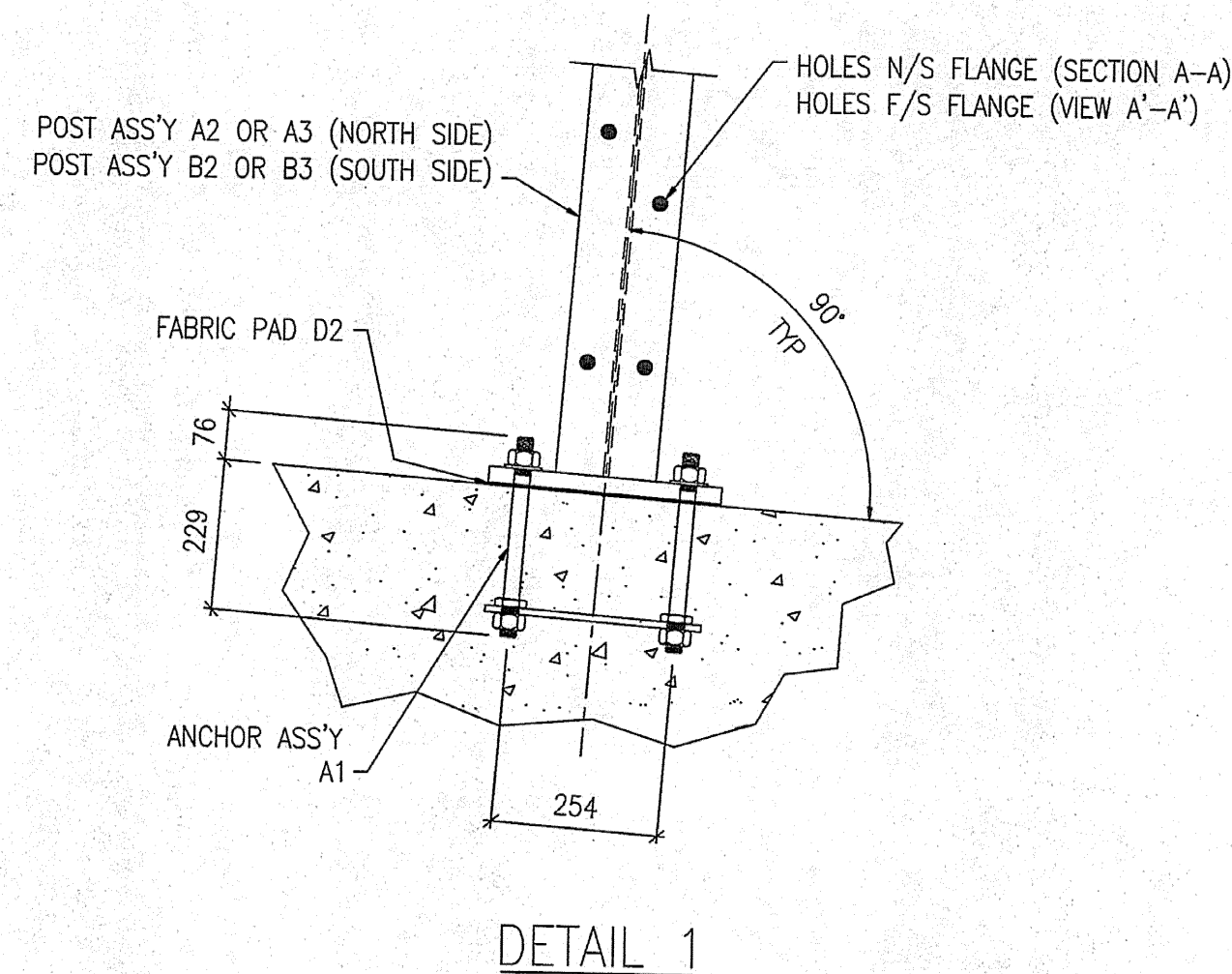
FOR APPROVAL



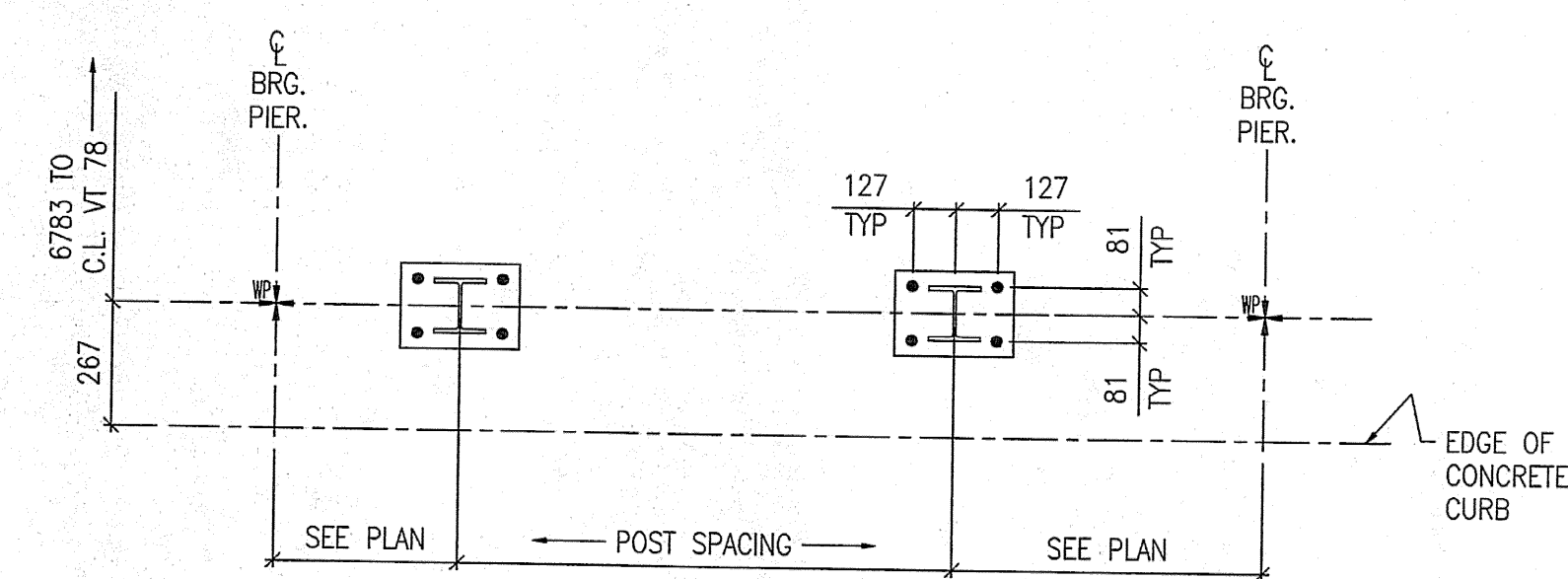
SECTION A-A
VIEW A'-A' (SIM)



SECTION B-B



DETAIL 1



TYPICAL RAILING POST LAYOUT

SHOP DRAWING REVIEW

REVIEWED AS REQUIRED BY THE CONSTRUCTION CONTRACT DOCUMENTS AND APPROVED ONLY FOR CONFORMANCE TO THE DESIGN CONCEPT OF THE WORK, AND SUBJECT TO THE LIMITATIONS AND REQUIREMENTS CONTAINED IN THE CONSTRUCTION CONTRACT DOCUMENTS.

REJECTED REVISE AND RESUBMIT APPROVED AS SHOWN

CORRECTIONS OR COMMENTS MADE ON THE SHOP DRAWINGS DURING THIS REVIEW DO NOT RELIEVE CONTRACTOR FROM COMPLIANCE WITH REQUIREMENTS OF THE DRAWINGS AND SPECIFICATIONS. THIS CHECK IS ONLY FOR REVIEW OF GENERAL CONFORMANCE WITH THE DESIGN CONCEPT OF THE PROJECT AND GENERAL COMPLIANCE WITH THE INFORMATION GIVEN IN THE CONTRACT DOCUMENTS. THE CONTRACTOR IS RESPONSIBLE FOR CONTROLLING AND CORRECTING ALL QUANTITIES AND DIMENSIONS; SELECTING FABRICATION PROCESSES AND TECHNIQUES OF CONSTRUCTION; COORDINATING HIS WORK WITH THAT OF ALL OTHER TRADES AND PERFORMING HIS WORK IN A SAFE AND SATISFACTORY MANNER.

VHB Vanessa Hannon Brustin, Inc.
Engineers, Planners, and Scientists
50 Bedford Plazza, 3rd Fl.
Bedford, NH 03110 603-884-6600

Job Number: 5511
Reviewed By: SMH
Date: 7-7-05

NOTES:

- FOR BRIDGE RAILING ERECTION PLAN SEE DRAWING E26.
- ALL RAIL POST ASSEMBLIES TO BE ERECTED WITH FLANGE HOLES FACING CENTER OF BRIDGE.

MAT'L : SEE GN-1	FIELD BOLTS
HOLES : 22Ø (7/8") U.N.O.	GRADE: A325
WELD :	
ELECTRODE : E70XX	
PREP : SEE GN-1	
PAINT : SEE GN-1	

REV.	DATE	BY	DESCRIPTION	CHK
1	11/01/05	JM	RE-ISSUED FOR APPROVAL	BH
0	09/06/04	JM	ISSUED FOR APPROVAL	BH

WORK: NETC 4 RAIL-BRIDGE RAILING
VT. ROUTE 78 OVER MISSISQUOI BAY
ALBURG - SWANTON, VERMONT

DRAWING: RAIL POST ANCHOR PLAN - SPAN 18

SCALE: N.T.S.	CIANBRO CORPORATION PITTSFIELD MAINE	SHEET E18
DRAWN: JM		JOB 050004
CHECK: BH		