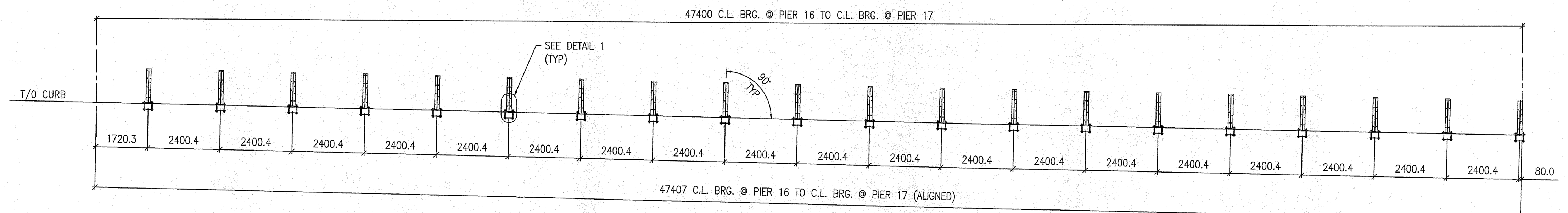
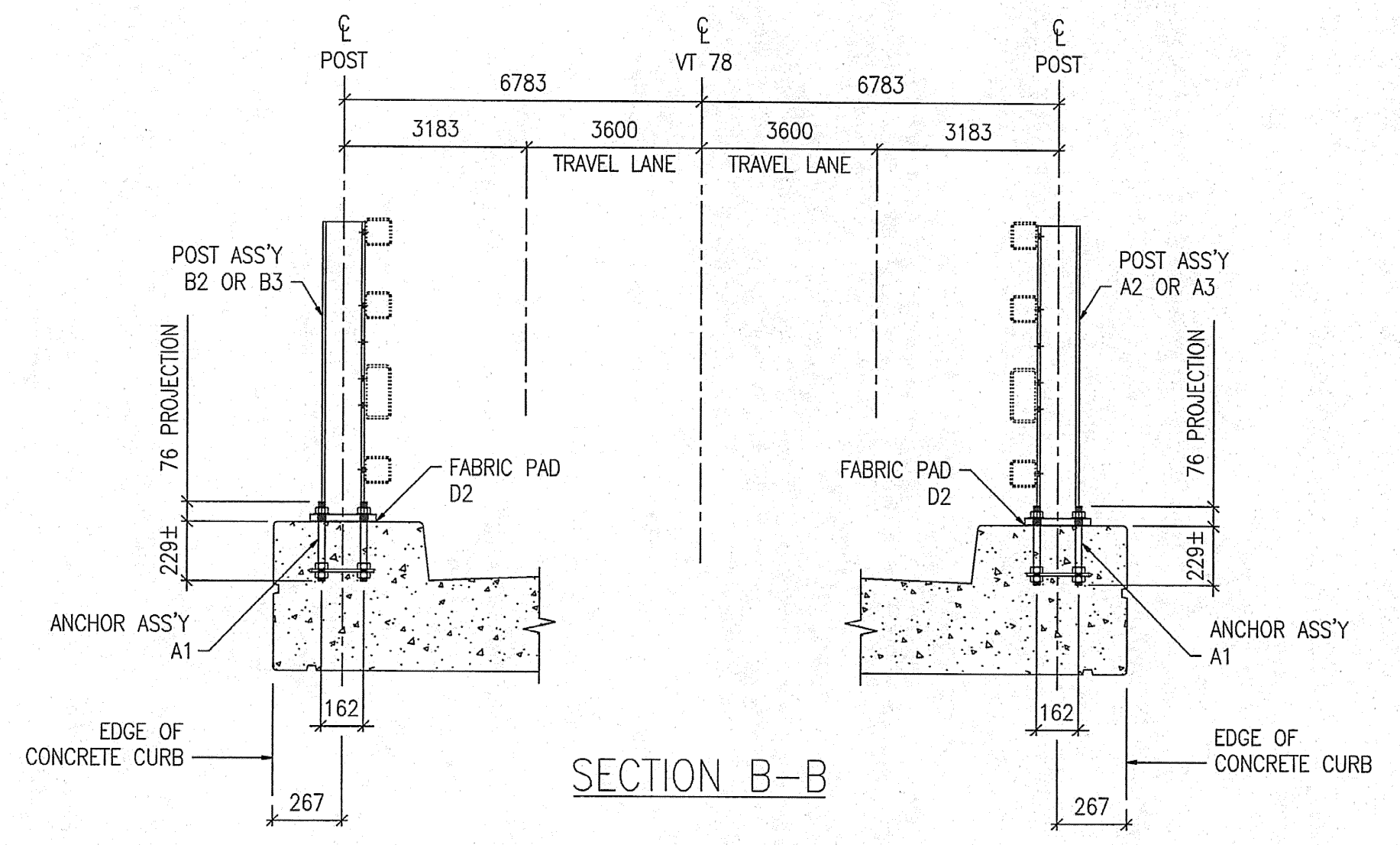


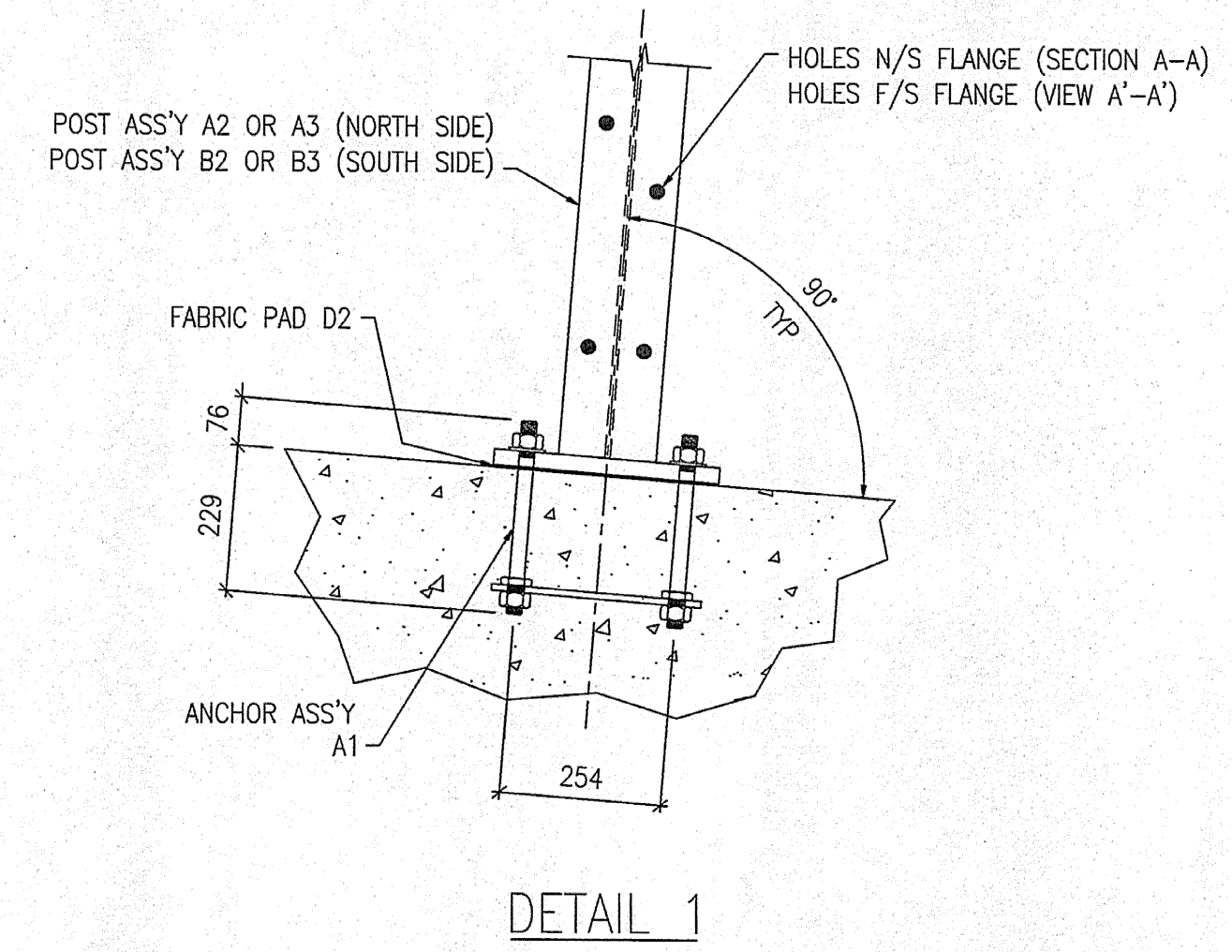
FOR APPROVAL



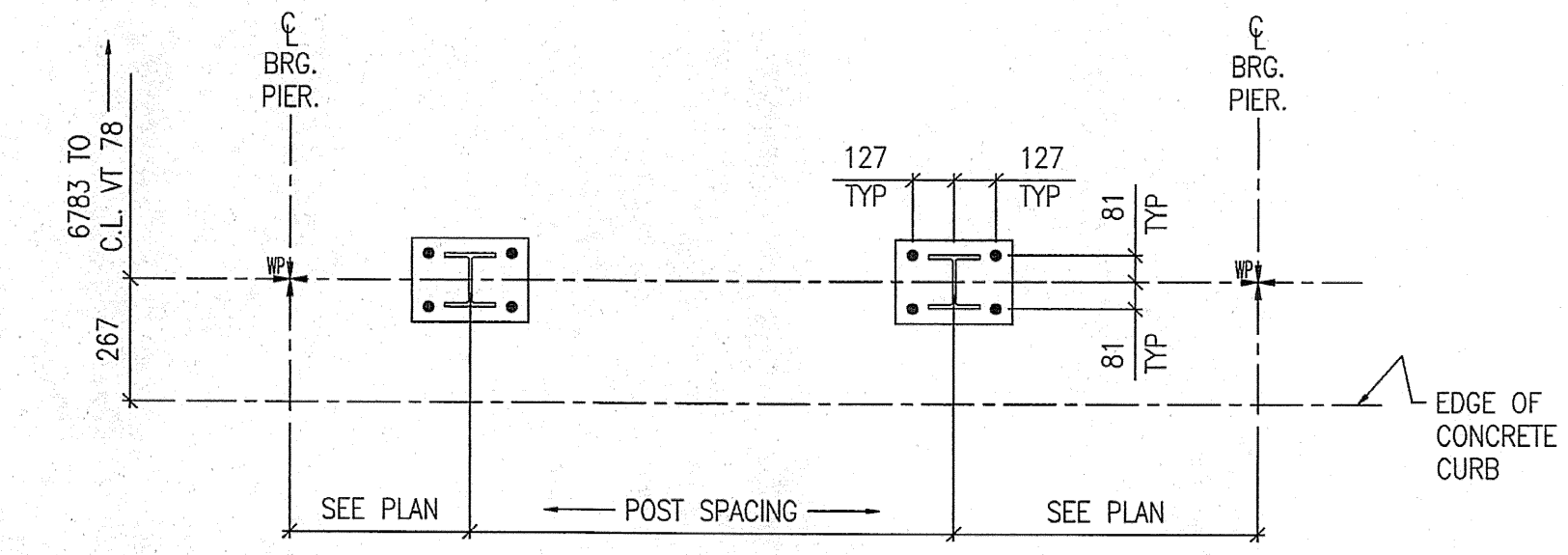
SECTION A-A
VIEW A'-A' (SIM)



SECTION B-B



DETAIL 1



TYPICAL RAILING POST LAYOUT

SHOP DRAWING REVIEW

REVIEWED AS REQUIRED BY THE CONSTRUCTION CONTRACT DOCUMENTS AND APPROPRIATE SPECIFICATIONS. THIS CHECK IS ONLY FOR REVIEW OF GENERAL CONFORMANCE WITH THE DESIGN CONCEPT OF THE PROJECT AND GENERAL COMPLIANCE WITH THE INFORMATION GIVEN IN THE CONTRACT DOCUMENTS. THE CONTRACTOR IS RESPONSIBLE FOR CONFIRMING THE TECHNIQUES OF CONSTRUCTION, COORDINATING HIS WORK WITH THAT OF ALL OTHER TRADES AND PERFORMING HIS WORK IN A SAFE AND SATISFACTORY MANNER.

REJECTED REVISE AND RESUBMIT FURNISH AS CORRECTED

RELIEVE CONTRACTOR FROM COMPLIANCE WITH REQUIREMENTS OF THE DRAWINGS AND SPECIFICATIONS. THIS CHECK IS ONLY FOR REVIEW OF GENERAL CONFORMANCE WITH THE DESIGN CONCEPT OF THE PROJECT AND GENERAL COMPLIANCE WITH THE INFORMATION GIVEN IN THE CONTRACT DOCUMENTS. THE CONTRACTOR IS RESPONSIBLE FOR CONFIRMING THE TECHNIQUES OF CONSTRUCTION, COORDINATING HIS WORK WITH THAT OF ALL OTHER TRADES AND PERFORMING HIS WORK IN A SAFE AND SATISFACTORY MANNER.

VHB Vanasse Hangen Brustlin, Inc.
Engineers, Planners, and Scientists
Six Bedford Farms, Kilton Rd.
Bedford, NH 03110 603 884 2888

Job Number: 50911
Reviewed By: *[Signature]*
Date: 5-7-05

- NOTES:
1. FOR BRIDGE RAILING ERECTION PLAN SEE DRAWING E26.
 2. ALL RAIL POST ASSEMBLIES TO BE ERECTED WITH FLANGE HOLES FACING CENTER OF BRIDGE.

MATERIALS		FIELD BOLTS	
MAT'L : SEE GN-1		GRADE: A325	
HOLES : 22Ø (7/8") U.N.O.			
WELD :			
ELECTRODE : E70XX			
PREP : SEE GN-1			
PAINT : SEE GN-1			

REV.	DATE	BY	DESCRIPTION	CHK
1	11/01/05	JM	RE-ISSUED FOR APPROVAL	BH
0	09/06/04	JM	ISSUED FOR APPROVAL	BH

WORK: NETC 4 RAIL-BRIDGE RAILING
VT. ROUTE 78 OVER MISSISSQUOI BAY
ALBURG - SWANTON, VERMONT

DRAWING: RAIL POST ANCHOR PLAN - SPAN 17		SCALE: N.T.S.	SHEET: E17 Δ
DRAWN: JM	CIANBRO CORPORATION PITTSFIELD MAINE	CHECK: BH	JOB: 050004